

complex life

the story of the moutere hills community centre

ruth moore

research by beverly mockett

contents

Preface 3

1: The Original Moutere Hall 5

2: Project '94 7

3: Fundraising 11

4: Public Open Day 15

5: Construction 17

6: The Complex Opened 20

7: Rangers 50th Jubilee 24

Appendix A: Moutere Hills Community Trust Board 26

Appendix B: Neudorf Hall 28

Appendix C: Fundraising and Sponsorship 32

Appendix D: Timeline of Events 37

preface

The Moutere Hills Community Centre hides a lot of history in its polished concrete floors and elegant modern design. When you walk into the Neudorf Foyer, you're stepping into a memorial of generations of locals who attended many special events at the Neudorf Hall. They helped to operate and maintain the hall before the community ceased using it in 2002 and the asset base was donated to the Moutere Hills Community Centre project. Inside the Woollaston Estates Function Room is Wypersfontain, or 'The Plough Inn', in recognition of the Perry family and the first bar in the region¹. There's the NBS (Nelson Building Society) Sports Hall, the Hyatt and Descendants Meeting Room and the Archibald/Goodall tennis courts. There are the names of families and individuals highlighted in the bronze or silver leaves of decorative grape vine wrapped around the foyer, or simply etched into

¹ An early edition of the local *Grapevine* noted in an article about Wypersfontain, 'It is recorded that it cost £5 for the license and was described as having 3 bedrooms, one sitting room, good beds and provisions, stabling and fodder for horses, stockyard and fodder for cattle. One day's ride from Nelson in a direct route to the goldfields in the south.'

memories names of men and woman from the community who gave their time and effort to bring about this wonderful community complex.
These are their stories.



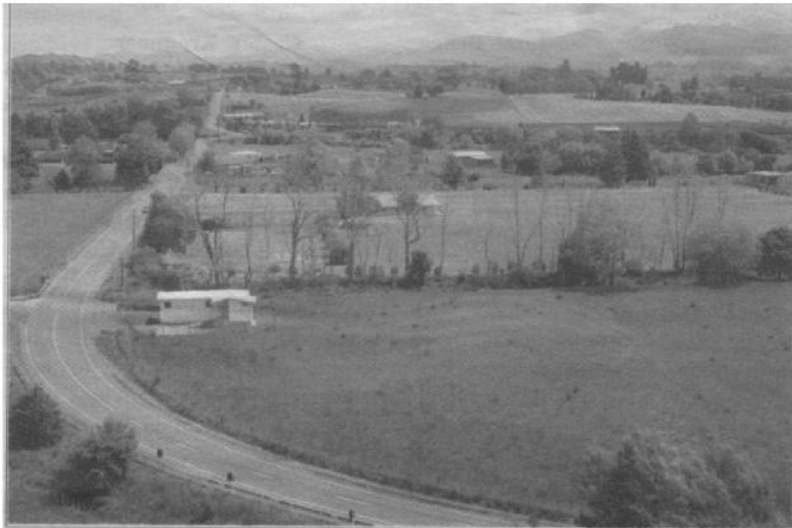
The completed complex, opened in 2005.

1. the original moutere hall

The original Moutere Hall was opened in November 1880, built on land leased out by James Drummond, a local timber mill owner. With just one room and a small low stage, there was no room for kitchen facilities or flushing toilets (sheep-dip tins were used instead), but the hall housed weddings, birthdays and funerals as well as local sporting and school events.

During the World Wars, the community held war-related meetings and fundraising events at the Domain. A cenotaph was erected, bearing the names of locals who lost their lives in World War I. In 1919, the Moutere Hills Athletics Day was established between the seven schools in the area. The main event was the Peace Shield, a 200-metre sprint between the fastest runners in each school. This event has run every year since and continues to be the most supported event at the athletics days.

On 21st January 1955, the four original rugby clubs of the area (Dovedale, Ngatimoti, Tasman and Upper Moutere) amalgamated to form the Rangers Rugby Football Club (Rangers RFC). The Rangers RFC used the Domain often, and their numbers were steadily increasing. The wider community also used the hall for dancing, bowls and table tennis. Tennis was played at the domain on regular occasions.



Pictured, beyond the creek shelter belt, is the Upper Moutere Domain, containing the sports pavillion which by 2005 will be a part of a much bigger community hall/multi-sports complex. The old hall and rugby clubhouse, on the shoulder of the top bend, will be sold to provide funds for the new building.

The old Domain viewed from the top of George Harvey Road.

During the 1970's, the Rangers RFC raised money through their members carting hay and crutching. This money funded training lights on the Domain and greatly improved conditions to the hall by adding a kitchen, supper room, a storage area, a bar, meeting room and flushing toilets.

2. project '94

By the late 1980's, it was clear to the Domain Board and Rangers RFC that the original hall and clubrooms needed upgrading or replacing. In 1994, Project '94 was launched, using funds raised by the rugby club and by gaining Council support and approval. New facilities were built nearer the playing fields and included a small kitchen that doubled as a canteen, storage for rugby equipment and changing rooms for two teams. Phil Hyatt, who was involved in Project '94, said in his speech at the Opening Day of the Moutere Hills Community Centre eleven years later, '...keeping our eyes towards the future, we built Project '94 with the ability to be added to at a later stage.'

In 2000, due to a very proactive secretary, Pat Hyatt, Rangers RFC held a strategic planning exercise with Sport Tasman, heading towards their 50th jubilee in 2005. Through this process it was determined that the lack of facilities was the major hurdle towards the club's development. The chairman of Rangers RFC, Steve Mitchell, who was also on the local Hillary Commission funding distribution board, was aware of a new concept called Sportsville. This is where a variety of user groups come together to build a multi-use facility to cater for all, this way bringing an economy of scale to the provision of services, a

perfect solution to several issues facing rural sport delivery in New Zealand. Armed with this information a series of public meetings were held to decide what the current and future needs of the community were, and whether or not the community would support the building of a larger multi-use complex. Locals were for the most part extremely enthusiastic about the prospect of a new complex. In 2001, Phil Hyatt (Pats brother in-law and a well respected local with national chairmanship experience) and Steve Mitchell, chairman of the Rangers Rugby Club, attended a Tasman District Council (TDC) Community Facilities meeting in Golden Bay and presented the concept and local support to the councillors of the Tasman District. Mayor John Hurley and the other councillors supported the idea and complimented the Upper Moutere community for their forward thinking, stating that if the project could achieve their required community outcomes, Council support would be forthcoming. A steering group was formed that saw representatives from most potential user groups come together regularly to drive the project forward and to ensure they were meeting the community needs.

Leigh Briars, a local architect, drew up the initial concept plans for the complex. These were chopped and changed and became the base document for many interesting discussions and debates. Arthouse Architecture was also engaged to provide concept plans and their plans became the preferred option at draft plan 7B. With the concept plans finalised and all in agreement, in February 2003 a proposal was put to the TDC.





Concept plans for the complex

To open a bank account, apply for funds and to be accountable and transparent to the local community members in June 2003, the Moutere Hills Community Trust Board (MHCTB), consisting of eleven local's representatives², was registered at the Registrar of Incorporated Societies as a Charitable Trust. MHCTB's main tasks included fundraising, managing the building project and the ongoing communication and negotiation with the TDC.

Rangers RFC was one of the first to offer financial support and a generous donation of \$25,000 was forwarded from the clubs savings.

The success of the complex depended on the support of the wider Moutere Hills communities. Aware of the asset base of Neudorf Hall being transferrable to the Upper Moutere Domain Board if the building was ever no longer used for the community, the future of the Hall was discussed with the Neudorf Hall and Communication Association. They generously agreed to the sale of the Hall and gifted

² See Appendix A.

the proceeds towards the building of the new Community Centre³. Their contribution provided crucial funds and their generosity and community spirit are remembered by the naming of the foyer: the Neudorf Foyer. In 2002, the original Moutere Hall and its land were also sold, and the proceeds allocated to Project '94.

³ See Appendix B.

3. fundraising

The Tasman District Council agreed to fund 80% of the capital costs of the complex, but a requirement was that the community must raise the other 20% of the total cost of the project. The MHCTB in conjunction and with the support of Judene Edgar and Tasman Funding Solutions Ltd developed a comprehensive three-year plan which would see the community work towards raising their component of approximately \$580,000.

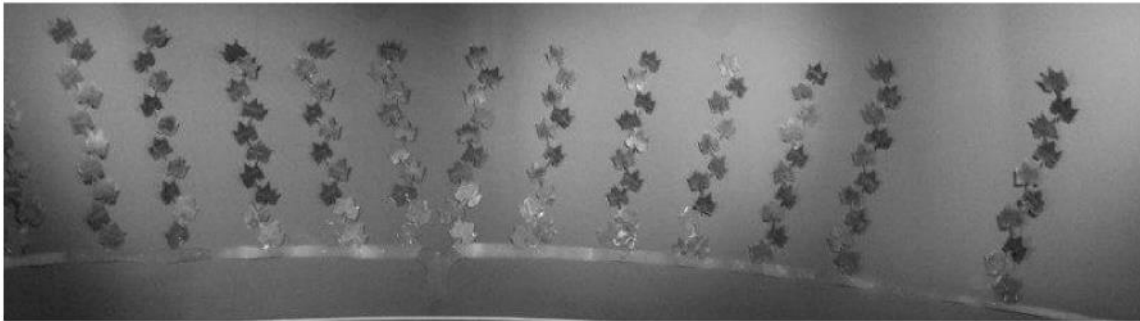


As well as the sale of the original Moutere Hall to Country Kids, other creative fundraisers were planned⁴. Naming rights were offered to prominent businesses in the area. The Community Vine Sponsorship Programme involved Darryl Frost, a local sculptor who designed a stylish vine with each leaf created freehand out of either stainless steel or copper⁵. This vine winds around the circular wall within

⁴ See Appendix C for more details.

⁵ A copper leaf cost \$100, while a stainless steel leaf cost \$500.

the Neudorf Foyer. The programme was described as 'an inexpensive way for everyone in the community to play a part in creating this much-needed community and sporting centre.' For every person who purchased a leaf, their name or that of their family, business or group was proudly positioned on the Community Vine.



Community auctions were organised to raise funds. The immensely popular Country Occasion, held at the Neudorf Winery by its owners, Tim⁶ and Judy Finn, also provided funds. This fair is visited by thousands every year and it includes music, entertainment, food and dozens of high-calibre stalls.

On 15th November 2003, a celebrity rugby match took place. Posters read 'Parliament vs. Moutere Hills Invitation Selection', with a 2pm kickoff. The event was followed by an after-match function at Siefrieds, a winery not far away on the Coastal Highway. The confident posters declared, 'A fun evening

⁶ Tim Finn was a member of the MHCTB.



Back Row: If Laulau, Chris Binns, Mike Eggers (behind), Will Snowden, Kendall Riley, Fred Ewers, Kevin Mead, John Armstrong, Murray Silcock.
 4th Row: Phil Hyatt, Peter Binns, Lawrie Graham, Chris Bensemann, Colin Stuart, Bob Neighbours, Mike Fraser.
 3rd Row: Murray West, Chris Atkins, Steve Berkett, Scott Ryall, Alby Wyatt, Peter Hall,
 Brendon McBride, Jim Ewers, Richard Easton, Hugh Gully, Dave McGaveston (behind), Alan Archibald.
 2nd Row: Paul Batt, Mark Forward, Craig Goodman, Don McLean, Stan Pinga, Mal Taia, Eric Inwood, Bruce Renwick, John Hyatt.
 Front Row: Chris Stephens, Murray Malone, Phil Grooby, Steve Mitchell, Alan Hewson, Trevor Olley.

photo by Roger Hynd, Photographers of Motueka, 2003

to cheer the All Blacks to victory in their Rugby World Cup semi final & commiserate with the Parliamentary All Party Rugby team as they lick their wounds fresh from defeat in the Moutere & celebrate with their opponents, the all powerful “Moutere Old Dogs”.’ The day was a success, but unfortunately the Nelson Selection lost. Later at Siefrieds, where Jeff Rackley was MC and there was no shortage of excellent food, wine, beer and good company, to complete the day the All Blacks also lost to the Wallabies.

Around this time, Mayor John Hurley wrote to the Council, ‘Over the past four years I have attended many fundraising functions for this project, listened to many presentations by the Trust to Council meetings and I have seen the dream become a reality... It has been inspiring to see that the people and businesses of the Moutere Hills are so supportive of a project that will benefit everyone and be an asset to the community as a whole.’

4. public open day

Concept plans for
the community
centre.



During the first term of 2003, the schools in the area were invited to submit designs for an advertising logo for the complex. Katie Gold, an award-winning local clay artist, was asked to judge the entries. She chose the design created by Megan Valentine and Chynead Mills, students of Upper Moutere School, and this was announced by Phil Hyatt at the public Open Day.

The public Open Day was held on Sunday, 6th April. In his opening speech, Hyatt said, 'Today is...a very important day in our community's history. This building we stand before, commonly known as Project '94, [was] the first stage of development of the Upper Moutere Domain. ... We believe there will be something in this new building, or developed over time on the domain, that every member of the Moutere Hills community will

be able to use. With our growing community [and] the schools' increasing rolls [every] year, it became evident to us that there was no point in building a complex for today. We have to look ahead at least 10 to 20 years. ...

'I thank the Trust members for their enthusiasm and commitment to this project. However I have no doubt they are not looking to be thanked, but rather for community support in the challenge ahead.'

Mayor John Hurley unveiled a 3D model of the complex, and other displays included a large floor plan and aerial map. The MHCTB organised a community picnic for the day, as well as races, food stalls, hot air balloon rides, and activities for the children.

**Concept plan for
the hall.**



5. construction

Early stages of
construction.

Tender for construction was awarded to Coman Constructors, a Richmond-based company, in January 2005. Within a month a substantial structure was in place. The design had been well thought out and had ideas that continued the multi-use concept. The function room and sports hall are separated by a large sliding door and stage area allowing both rooms to be used simultaneously as well as for productions to either room.

The water storage for rain is under the concrete deck and with the large roof catchment ensures good use of the limited rain in the Moutere.



Wheelchair access throughout, is another multi-use consideration as well as clever storage space under the stage. The kitchen and bar can serve internally and externally and both have commercial capability. Over 10 groups were

considered in the design of the complex. This resulted in the meeting room, the community room, and the foyer which doubled as an exhibition room.



From left: Adrian
Reid, Pat Hyatt,
Phillip Woollaston,
Phil Hyatt and Alan
Archibald.

The project stayed on target, and in July the MHCTB set a date for the official opening: 8th October 2005: two weeks before planned Rangers 50th Jubilee celebrations. Site manager Richard Mabbott said the builders were 'trucking along' to meet the deadline, and project architect Brendon Monk reported that progress overall was on target.

In August, MHCTB's chairman Phil Hyatt reported, 'We are very satisfied with progress to date at the Upper Moutere Domain... The new tennis courts are nearly completed and look fantastic. ... The No.1 rugby field, which has been re-sown, will be ready for use shortly, Rangers played all their home games away this season, and the other rugby clubs supported them through the development phase of the new facility....'

After working through the extreme temperatures of summer and winter, the building works were signed off in September, to the time frame, to budget and a much more attractive building than many had envisioned.

6. the complex opened

The dawn
blessing at the
opening of the
complex.

The Moutere Hills Community Centre was officially opened on Saturday 8 October, 2005. It was a tribute to the community and their fantastic effort of raising more than a quarter of the total cost of the building.

At dawn a blessing was held over the relocated war memorial. The ceremony was conducted by Reverend Steve Wockner, Reverend Cannon Gladys Taingahue and Vicar General Harvey Whakaruru. Around 70 people braved the cold morning. Later in the day, over 600 people visited the memorial.

Mayor John Hurley paid tribute to the project and its organisers, saying, 'It would not have happened without the vision of the Trustees and the support of the Moutere Hills community. It is heart-warming to see community spirit is alive and well in this district. The partnership



between the Council and the Moutere Hills community has been an outstanding success...’

Upper Moutere School’s Kapa Haka group performed as the opening plaque was unveiled alongside the main doors. The togetherness of the generations of the community who contributed to the project was symbolised by the cutting of the ribbon. 94-year-old Helen Hyatt was acknowledged as a major financial contributor to the project, and 6-year-old Edward Read helped at every fundraising event held by the Trust. They cut the ribbon together.



The complex, which eventually cost over \$2.4 million, features a 150-seat function centre, a commercial kitchen and bar, a 40-seat meeting room, a sports hall, a stage, and a separate room for community activities.

Outside are four state-of-the-art tennis courts, two rugby grounds and a soccer field. A grassed embankment above the main playing field provides a natural grandstand for spectators and provides a stunning view down the Moutere Valley.

Another prominent figure at the Opening Day was MHCTB chairman Phil Hyatt. He publicly acknowledged many of the people involved in the project. 'It has been my pleasure to be involved with this amazing project and to see the dreams of so many people become a reality. My appreciation goes to Keith and Anne Best and Jim Frater from the TDC for facilitating [the] purchase [of] additional land. The leadership of Gordon, Richard and Gavin from Comans has been irreplaceable throughout the 9 months construction period. They have kept the project on time and on budget. With

the guidance and wisdom of Judene Edgar from Tasman Funding Solutions, we...raise[d] the remaining funds [asked of us by the Council].

'I'd like to thank the dedicated and tireless trustees of the Moutere Hills Community Trust... Adrian Reid who is currently organising his third auction and who helped keep our feet firmly on the ground throughout the project; Justine Read for designing and co-ordinating the playgrounds and playgroup room and for all her efforts with the furnishings and fittings—and I'd also like to add a thanks to her husband Ken for all his engineering advice and expertise at all the site meetings; Steve Mitchell, Chairman of the Rangers Rugby Football Club for his role in creating the vision and then helping to drive it—although we did have to steer him away from painting everything orange and black; Jeanette Bent for her efforts in creating four very professional tennis courts and helping re-awaken this sport within the community; Patricia Hyatt for her tireless efforts on co-ordinating the furnishings and fittings and designing the colour schemes and landscaping plans; Alan Archibald who has now taken on the role of Treasurer, for bringing his vast wealth of business experience and hands-on practical experience to the

group; Brian Beuke for organising two very successful auctions and for sharing his keen insights and eye to detail; Leigh Briars who designed the original concept plans for the Centre and brought a very valuable artistic perspective to the project; Shelley Thomas who has become a very valuable and efficient secretary for the Trust; Tim Finn, our MC, who, with wife Judy is currently organising their second “A Country Occasion” and for contributing his wealth of business experience...[and] the efforts of the past trustees.

‘Ultimately we see the Centre being used 7 days a week for conferences, weddings, 2 1sts , meetings, playgroups, sports, school activities and regional sports competitions... The opportunities are limitless.’



**Helen Hyatt and
Edward Read cut
the ribbon.**

7. rangers' 50th jubilee

Two weeks after the official opening of the complex, the Rangers RFC' 50th Jubilee was held. The Jubilee was anticipated and planned five years earlier; it was the initial catalyst for the consideration of establishing a new community complex.

It was the personal goal of president Steve Mitchell to have a team representing each grade for the Jubilee celebrations. From 2001 to 2005, the club grew from 6 – 11 teams.

The celebrations began on Friday, 2 1st October. The evening consisted of registrations, drinks and nibbles and was attended by young and old players. Saturday the complex hosted rugby games all day. Every Rangers team was involved, from the under-6 team to an under-16 presidents team and a senior side. They all played their most competitive opposition from the 2005 competition which saw more teams in the Orange and Black than ever before. The seniors had won the senior third title with 18 wins from 18 games and had great support and a following throughout the season. The celebrations carried on into the evening and included formal dinner and a Jubilee dance. On Sunday, a special breakfast was

held, and then a Golden Oldies game around lunch time before a final drink and farewell to the Rangers Players and supporters from 50 seasons.

Former Rangers players, administrators and supporters were very impressed with the complex. At the formal dinner, Steve Mitchell, when making his speech to the old and new members asked if they supported the way their investment funds had been allocated to the new complex. They gave him standing ovation. He closed his speech by making a special mention of his wife and family, saying, 'Thank you for your support. I go to a lot of meetings.'



Rugby on the new field.

mouere hills community trust board

Members of the MHCTB had to represent a specific group or have a skill set. Local representatives and members included:

Elected in 2002:

Phil Hyatt (Community/Sport and Recreation)

Pat Hyatt (Rangers Rugby Club)

Steve Mitchell (Rangers Rugby Club)

Justine Read (Mouere Playgroup)

Adrian Reid (Community/Sport and Recreation)

Brian Beuke (Neudorf Hall Committee)

Mike Eggers (Lutheran Church)

Shelley Thomas, secretary (Community/Sports and Recreation)

Alan Archibald (Mahana School)

Tim Finn (Community/Winegrowers)
Sefton Ferrick (Upper Moutere Store)
Elizabeth Stronfeldt (Treasurer)

Elected in 2003:

Jeannette Bent (Tennis Club)
Trevor Norriss (Tasman District Council)
Leigh Briars (Lutheran Church/Neudorf Community)

appendix b

neudorf hall

The Neudorf Hall was built around 1870, and was originally a school. It had just one room with a fireplace at one end. It became the Neudorf Hall in around 1930, and remained in a similar state to the original Moutere Hall before Project '94. With the expanding population in the area, the Neudorf Hall couldn't meet the needs of the community. Keeping up the maintenance had become a chore for volunteers. Like the Moutere Hall, expensive upgrading was needed if the Neudorf Hall was to continue. The Neudorf Hall's Constitution stated that if the Neudorf Hall was no longer used by the community, its assets would become the property of the Upper Moutere Domain Board. Phil Hyatt and Steve Mitchell approached the hall to discuss this.

12th July 2004

Tasman District Council,

This letter is to inform you of the proceeds from the sale of the Neudorf Community Hall, plus other Neudorf Hall funds, which are to be given to the Moutere Hills District Community Centre & Sports Complex.

The sale, plus funds = \$258,000.

R. J. Bensemann⁷,
Treasurer

The Neudorf Hall is now a beautiful European-style bed and breakfast.



————— The Neudorf Hall,
restored.

⁷ Richard John Bensemann.

fundraising and sponsorship

The MHCTB's three-year fundraising plan consisted of:

Sale of properties (Neudorf Hall and Moutere Hall)

Sponsorship and donations

Sponsorship Board

Room sponsorship

Donations

Annual fundraising programme

Community Trusts

Major contributors to the complex included:

Rangers Rugby Club

Neudorf Hall Country Occasion

Businesses or families who purchased naming rights:

Nelson Building Society
Woollaston Estate Hyatt
and Sons Ltd.
Archibald/Goodall)

Community Vine sponsorship:

Stephanie Best
Matthew Best
William Best

Lance, Lynda & Jordan
Wayne, Julie, Riley & Josh
Matthew & Joanne

Dick & Susanne Bensemann
Country Kids
Don, Joanne Tait & Family
D'Urville Vineyard
Douglas Family Dovedale

P & S Drogemuller
Family Michael
Douglass

Martin Douglass
Jeanette Tunnicliffe
Dovedale Olives
Christopher Bensemann
K & J Grant

Tim, Judy & Rosy Finn
Damian O'Connor M.P.
Somerset Farm Cottage
Ken & Madge Hall
The Bowyer Family
Chris and Joan Ewers

Skye, Tyla, Roma & Kiri Percy
Mary Evers Family

appendix c

Errol & Anne Evers
Aaron Evers & Lisa Evers
The Gladstone Family
A & R Gardiner
Family D & M
Gallagher
Gerrish Family
The Floyd Family
The Forward Family
Maurice James Harvey
Te Frogs Fruit Farm
Cliffe Family
Phillipa Rutherford
Bruce Farley

Lawrence Halstead
Meagan Halstead
Amanda Halstead

Brian & Celine Halstead
Brendon & Lorraine McBride
The Clifton Family
Willets Family
Eileen & Graeme Thawley
Norm & Letty Thawley
Mairs Family

Clare & Edward Lane
Moutere Grove
George McMurtry
Bavin Family
Adrian & Gabriella
Amy & Alex

Louie, Ian & Linda Morris
Leith Family
The Kemp Family
David Silcock 1977-98
Kerry & Chantal Toms
St. Pauls Church U.M.O.

Solid Foundations
Julian & Sally Manning
Mahana School

The Heine Family
Nelson Sun Club

N. B. Rugby Referees
Rob & Liz Ashburner
F & A Newmann

Horton Family Dovedale
Ray & Phillipa Hellyer
Ruth & Gordon Fraser
M A Lane Sales Ltd
Fraser Family Bronte
Kahurangi Estate

Alex Green & Luke Green
Owen & Kaye Pope
K & S Ferrick

The Bosecke Whanau
Jeremy & Hayley Reid
Purdey & Alice Reid
Adrian & Joan Reid
Kiwi Dig - Grant Perry

Perry Family Neudorf
Art & Nance Perry
Marie, Jenny, Tara Batt
Dave, Paul, Daniel Batt
Sam Ellis

George Ellis
Hannah Ellis
Amy Ellis

Hadyr & Catherine Ellis
Peter Family Glengyle
W M & H Perry - Pioneers
George & Mable Perry
Trev & Ebeth Stronfeldt
Valentine

Daniel Hyatt
Mark Hyatt
Louise Hyatt
Jackie Scoggins (Hyatt)
Jessica & Connor Scoggins
Jackie & Andrew Scoggins
Patricia & John Hyatt
Austin & Helen Hyatt

Liz & Francis Charman U.K.
Joshua Grant
Benjamin Grant
Bessie & Dick Higgs
Shane & Sarah Drummond
Siefried Family
Moutere Motors
Playing With Fire and the
Coolstone Gallery
Edgar Verhagoen Family
Vegetation Services Ltd
Ryan & Logan Thomas
Dianne & Peter Smith
Emily Ryall
Alvin James Hyatt
Susan Jennifer Hyatt
Olivia Marie Hyatt
Phillip and Raewyn Hyatt
Rosemary and Hilda Hyatt

Boskett-Barnes Family
B Walker
Nelson Bays Rugby Union
Nathaniel Hunt's Family
The Mud Castle
Kidpower Trust
D & M Easton & Sons
Lynne Peter & Family
Barry & Dianne Drog
Popham Family
The Ward Family
Lisa McKay & Daniel McKay
Julie & Neil McKay
R Prestige Family
Don & Shirley Prestige
Panzer Family
Tailored Travel
Bawtree Family
Brodie Briars

Jacob Briars
Leigh & Jenny Briars
David Beuke
Marion Beuke
Ruth Beuke, Kieran & Rosa
Carl Beuke
Sharon & Brian Beuke
Andrew & Heather Eggers
James Brownie
Ben Brownie
Linda Brownie
Adam Brownie
Paul & Heather Brownie
Edward Jesse Read
Crystal Mary Read
Andrew & Joseph Read
Teece Family Wills Rd
ENZA

Other significant contributors were The Car Company, auction days organised by Brian Beuke and Adrian Reid, the rugby day featuring the Parliamentary team and the Moutere Selection, and substantial grants from gaming machine societies and the Canterbury Community Trust.

The foyer, with its banners displaying the history of the land and the complex.



appendix d

timeline of events

19 November 1880 – Opening of the original Moutere Hall.

1948 – Official Domain Board established.

20 January 1955 – Rangers Rugby Football Club established.

1985 – Domain officially named the Upper Moutere Recreation Reserve.

1994 – ‘Project 94’ launched: available funds used to build a facility away from the old hall with a kitchen, storage and changing rooms but no club rooms (although it was designed so these could be added later).

July 2001 – Public meetings held to brainstorming a 5-10 year plan for the facility.

December 2001 – Key players⁸ attended the final meeting of the year. It was agreed that it was time to approach the Tasman District Council with a package of well-considered options and timeline for development of the new facility.

April/May 2002 – The Council agreed to sell old hall, and provides \$10,000 seeding finance to finalise plans for the new complex.

July 2002 – Moutere Hills Community Trust Board set up as coordinators of the major effort.

Sunday 6 April 2003 – Public Open Day.

25 January 2005 – Official contract signed off with Council accepting the \$1.83 7 million Coman Construction price tag. Construction began.

Saturday 8 October 2005 – Complex officially opened.

2 1-23 October 2005 – Rangers RFC's 50th Jubilee held.

⁸ Steve Mitchell, Pat Hyatt, Adrian Read, Phil Hyatt, Mike Eggers, Sefton Ferrick, Jenny Popham and Shelley Thomas.