

## FESTIVAL FUN!

### LOCAL LIVES



**The Sarau Festival is on again. Come along and join the fun on 31 January!**

**T**his wonderful late afternoon Festival is a chance to celebrate the fabulous Moutere Valley and its people. With a blackcurrant theme, the Sarau Festival also showcases many other crops in the Moutere, along with a multitude of talented artisans and craftspeople.

It's a lovely opportunity to browse among the stalls, then sit on a hay bale with some delicious food and a glass of something, and listen to some great music with your friends and neighbours. Katrina from MHCC will again run the very popular Kidzone play area, and Animal Farm will be bringing some of their friendly, cuddly animals for the young (and not-so-young) to pet. Sarau Teas will be there to tempt your taste buds, and provide a genteel environment to sit and watch the sun go down over the Mount Arthur range.

There'll be plenty of stalls and the usual great line up of marquees, with books in abundance, baking competitions and photos on display. The Grown In The Moutere tent will be back,

with speakers from the crops exhibited, from hops to blackcurrants and olives.

Look out for the speakers' time slots, which will be displayed at the Festival, and come and learn about these wonderful local crops. There'll also be some hop plants, blackcurrant plants and olive trees for sale.

All proceeds from the Festival go directly back into our community, so bring your friends and family along and support our local artisans, wineries and breweries. Please 'like' our Sarau Festival Facebook page, or visit our website for more info on the competitions and music line up. See you there!

**Sarau Festival & Country Market: Sunday 31 January, from 3pm**  
**Just \$5 per adult, children FREE**  
[www.facebook.com/SarauFestival](http://www.facebook.com/SarauFestival)  
[www.saraufestival.co.nz](http://www.saraufestival.co.nz)



**Hon Damien O'CONNOR**  
MP for West Coast/Tasman

0800 DAMIEN (0800 326 436)  
Facebook: damienoconnormp  
damien.o'connor@parliament.govt.nz



Labour

Authorised by Damien O'Connor MP, Parliament Buildings, Wellington



## PLACING AN ADVERTISEMENT

Thank you for advertising in the Grapevine – you help us cover the cost of producing and delivering this free community newsletter each month.

**The deadline for each issue is 15<sup>th</sup> of the month.**

Please email your print-ready ad to [umograpevine@hotmail.com](mailto:umograpevine@hotmail.com) or provide paper-based, print-ready copy to the Upper Moutere Store.

**The following prices apply for advertising:**

- Ⓞ Births, marriages, deaths and giveaway notices: Free
- Ⓞ Business card size advertisement: \$12
- Ⓞ 1/4 page advertisement: \$25
- Ⓞ 1/2 page advertisement: \$50
- Ⓞ Full page advertisement: \$95 (if space available)

Please deposit payment (and identify it with your name) to our account: NBS 03 1354 0229034 16

We warmly welcome editorial contributions to the Grapevine from all residents in the Moutere and Tasman regions. You make the newsletter an interesting read!

There is no cost to having your articles published, but if you are telling the community about a commercial or fundraising venture, we do appreciate a small donation to help us cover our costs (see above for bank details).

**The deadline for each issue is 15<sup>th</sup> of the month.**

Please email your copy to: [umograpevine@hotmail.com](mailto:umograpevine@hotmail.com)

### BUSINESS & HOME SERVICES

*Organising & getting the job done, so you can relax.*

**KIRSTEN AMMANN**  
P: 021 074 6650 E: [ammannkirsten@gmail.com](mailto:ammannkirsten@gmail.com)  
[www.facebook.com/businessandhomeservices](http://www.facebook.com/businessandhomeservices)

\* Taking A Fresh Look At Your Business  
\* PA Office Services \* Holiday Home Set Up

# Heine's

## Cartage and Contractors

We have trucks, excavators, a dozer, a grader, and the expertise to do all your cartage, drainage, building site & foundation, roading, and subdivision work.



40 years of local knowledge

and experience in the transport and contracting industry

Phone Wayne on 03 5432 788

027 430 2725

Or call in at our workshop and office at

1455 Moutere Highway

(by the firestation)

UPPER MOUTERE

## FOR EXTRA SPACE AT YOUR PLACE

**CARAVAN RENTALS**  
**Long term from \$60 per week**

**Phone Tony**  
**027 442 5010**  
**0800 733 326**



**Sharon De Jong**  
Sales & Marketing Consultant

Mobile: 0273 202 196

**Richmond Office**  
203 Queen Street, Richmond  
Office: 03 544 2900  
Fax: 03 544 2909  
[sharon.dejong@summit.co.nz](mailto:sharon.dejong@summit.co.nz)  
[www.summit.co.nz](http://www.summit.co.nz)

**SUMMIT**  
REAL ESTATE LTD  
LICENSED UNDER THE REAL ESTATE AGENTS ACT 2008





# What's on at Moutere Hills Community Centre

Term 1 4<sup>th</sup> February – 15<sup>th</sup> April 2016

Monday	Tuesday	Wednesday	Thursday	Friday	Saturday	Sunday
<b>Walking Group</b> 9:00am Depart MHCC  <b>Social Fitness for over 60's</b> 9:15 – 10:15am In the Fitness Centre for members. Stay for a coffee!  <b>Gymnastics</b> 11:00 – 11:45am (up to 2yrs) 1:45 – 2:30pm (2-4yrs) 3:15 – 6:30pm (5-14yrs) Cost: \$4 per class - under 2yrs \$70 per term – preschool \$90 - school age  <b>Mahana Guitar School</b> 4:30 – 8:00pm  <b>Karate for Youth/Adults</b> 7:15 – 8:15pm (starts 15 <sup>th</sup> February)	<b>Group Fitness</b> 6:00 – 7:00am (starts 9 <sup>th</sup> February)  <b>Cardio Tennis</b> 9:00 – 10:00am No ability necessary Upper Moutere Tennis Club  <b>Zumba Fitness</b> with Hilary 5:45 – 6:45pm Cost: \$7 per session (Classes on through school holidays)  <b>Social Touch</b> 6:00 – 7:00pm Gold coin donation  <b>Adults Social Badminton</b> 7:00 – 8:30pm Cost: \$3 per session	<b>Tennis Coaching</b> 9:00 – 10:30am Intermediate+ Upper Moutere Tennis Club  <b>Social Fitness for over 60's</b> 10:30 – 11:30am In the Fitness Centre for members. Stay for a coffee!  <b>Karate for Kids</b> 3:30 – 4:30pm (5yrs+) (starts 3 <sup>rd</sup> Feb)  <b>Core Foundations</b> 6:00 – 6:45pm Cost: \$7 per session (Fitness Centre members – free) (starts 10 <sup>th</sup> Feb)  <b>Social Tennis Club Night</b> 6:00 – 8:00pm Upper Moutere Tennis Club  <b>Adult Social Table Tennis</b> 7:00 – 9:00pm Cost: \$3 per session	<b>Group Fitness</b> 6:00 – 7:00am (starts 11 <sup>th</sup> February)  <b>Midweek Tennis Coaching</b> 9:00 – 10:30am Intermediate+ Upper Moutere Tennis Club  <b>Dru Yoga</b> 9:30 – 11:00am (starts 11 <sup>th</sup> February)  <b>Junior Tennis Coaching</b> From 3.15pm For ages 5yrs+ (starts 11 <sup>th</sup> February)  <b>Adult Social Volleyball</b> 7:30 – 9:30pm Cost: \$3 per session	<b>Group Fitness</b> 6:00 – 7:00am (starts 12 <sup>th</sup> February)  <b>Playgroup</b> 10:00am–12:00pm All welcome  <b>Tennis Club Night</b> 5pm onwards Upper Moutere Tennis Club	<b>RANGERS CRICKET CLUB GAMES</b>	<b>Tennis Club Day</b> 9:00am onwards Upper Moutere Tennis Club

## Contacts

### Dru Yoga

Jill (03) 527 8069

### Group Fitness/Core Foundations

Carol 021 908 539

### Gymnastics

Sam 021 069 5991

### Mahana Guitar School

Jim (03) 528 9775

### Social Sports

Volleyball, Table Tennis, Badminton Vanessa 5432 516

### Zumba

zumbahil.com

### Karate

Paul 022 633 1055

### Tennis

Vanessa 027 511 8826

### Playgroup

Kirsty 5432 427

### Social Touch

Mark 027 422 9949





The Social Group meets at the Sunday School Hall (Upper Moutere Lutheran Church) on **Thursday afternoons at 1.30pm each fortnight.**

Join in games and cards. Enjoy our afternoon of fun and fellowship. All welcome.

Contact Brian or Lois Eggers ph 5432 871.



## CARAVAN RENTAL

Local business offering great value, good quality, well equipped UK caravans available for short and long term rental. Can be delivered and set up to a campsite/location of your choice. Short term holiday rates from \$50 a day. Long term static hire from \$100 pw.

[www.kinacampers.co.nz](http://www.kinacampers.co.nz)

Email: [info@kinacampers.co.nz](mailto:info@kinacampers.co.nz)

# MOUTERE INN



THE CENTRE OF THE MOUTERE SINCE 1850

- ♦ Craft Beer
- ♦ Local wines
- ♦ Bar meals
- ♦ Lounge bar
- ♦ Real Ale
- ♦ Live music
- ♦ Evening Dining
- ♦ Rooms

ESTD 1850

*All welcome*

Available for functions and private bookings

## COMING EVENTS AT THE MOUTERE INN

- ❖ **LIVE MUSIC 7:30pm Thursday 28<sup>th</sup> January**  
"Fiddle Pie's old time country music & dance variety show"  
From their respective homes across the US, Canada, and New Zealand, this group of rowdy young musicians brings forth an epic array of traditional American string band tunes, called square dances, classic country buckle shiners, and jokes cornier than Illinois in the summertime.
- ❖ **FINE DINING EVENING 7 pm SAT January 30<sup>th</sup> \$50**  
We will be offering a relaxing evening, of fine dining over five courses. With local wine and beer matched with each course. Bookings essential, check our website for menu details.
- ❖ **DON'T FORGET**  
Raffle every Wed 6pm with Chase the Ace.  
1<sup>st</sup> Thurs Folk Night. This month 7th  
2<sup>nd</sup> Thurs Quiz Night. This month 14th  
3<sup>rd</sup> Thurs Country Night. This month 21st

**THE MOUTERE INN**  
THE CENTRE OF THE MOUTERE

**Phone 543 2759**  
[www.moutereinn.co.nz](http://www.moutereinn.co.nz)

# Tasman Gymnastics Club

- Pre school
- After School
- Special Needs
- Home School
- School/Kindy visits – at your centre or you can come to us
- Opportunities to be part of competitions, annual show, local parades



*Develop gymnastic skills*

*Strength*  
*Co-ordination* *Confidence*  
*Flexibility* *Teamwork*  
*Fun and safe environment*

**Classes available at:**

**Motueka Recreation Centre and  
Moutere Hills Community Centre**

**For full timetable and prices see our website**

**[www.tasmangymnasticsclub.com](http://www.tasmangymnasticsclub.com)**

**or contact Sam, phone 543 2512**



**MORTIMER**  
Upholstery & Marine Covers

44 Beach Road, Richmond  
03 5446352

- Motorhomes
- Boat canopies
- Car/Boat interiors
- Truck covers
- Convertibles
- Classic cars
- Seat repairs
- Tonneau covers
- Stock covers
- Commercial

[www.mortimerautoupholstery.co.nz](http://www.mortimerautoupholstery.co.nz)



## MAPUA BOWLING CLUB

### THE WRITE BIAS

The New Year has seen both new members and long-time members enjoying bowls in the lovely summer weather. Club Championship matches are underway and the Club has a team entered in Nelson-wide President's Trophy competition as well.

Tournaments at the club are always both fun and competitive. In the most recent, which was sponsored by the Jellyfish Café, the triples team of Chris Green, Jean Daubney and Barbara Brown were the winners on the day and they were happy to receive vouchers from the Jellyfish Café.

In February the club will be holding the Elston Blain tournament and the Dale Verco tournament which is an open event.

**League Bowling** is underway and is held Monday evenings beginning at **6 p.m.** These sessions are open to new and experienced bowlers with both friendly and competitive play. There is no need to pre-book; just turn up on a Monday evening and give it a go. Flat-soled shoes are essential to protect the green, but there are plenty of sets of bowls to borrow at the club and the bar is always open. Why not give it a try?

For information about bowling, coaching or booking the clubhouse and facilities please call Michael or Margaret Busby (544 6325)



Winning triples team of Barbara Brown (Upper Moutere), Jean Daubney and Chris Green (Mapua)



## UPPER MOUTERE TENNIS CLUB

*Mission: To be a friendly community tennis club that promotes and encourages participation for fun, fitness and achievement for all ages and levels*

Enjoy some tennis in the summer sun!  
New club members (all levels) are always welcome.  
See you on the court or at our Pimms stall at the Sarau Festival.

- **Social Tennis:** Sunday Mornings: Begins at 9:00am
- **Social Tennis:** Wednesday Evenings 6:00-8:00pm
- **Cardio-Tennis:** Tuesday Mornings: 9:00-10:00am  
The latest craze to get fit while playing tennis!
- **Coaching:** Wednesday Mornings: 9:00 – 10:00am  
Thursday Mornings: 9:00 - 10.30am  
  
Please contact Vanessa 543 2332  
for all Coaching, Group & Individual
- **Junior Coaching:** Thursdays: from 3:15pm, 5 years to Teens  
(Lessons start again on Thurs 11<sup>th</sup> February 2016.  
All enquiries to Vanessa)
- **Senior Inter-Club:** Several UMO Tennis teams are playing in the local NBTA competitions. Contact the club, if you are keen to take part.

To join Upper Moutere Tennis go to:

<http://www.mouterehills.org.nz/clubs/upper-moutere-tennis-club/>  
for our 2015/16 Membership Form

or email [UMOTennis@gmail.com](mailto:UMOTennis@gmail.com)

We look forward to seeing you on court



## Situations vacant

Is there more than  
one of you out  
there?

Age – no barrier; young  
old, or in between we  
want to hear from you.  
If you'd like to  
contribute a line or two  
on a regular basis or  
even on an occasional  
basis, let us know

## SLEEPY HOLLOW OR BUZZING COMMUNITY?

Your chance to be part of it!

If you have a passion for creative literature channel it through the Grapevine.

Are you our next roving reporter? Fantastic volunteer position for someone who's got their ear to the ground or finger on the pulse (perhaps you like a cliché as much as we do) Or maybe you can break us of the habit.

**CONTACT THE  
GRAPEVINE TEAM**  
[umograpevine@hotmail.com](mailto:umograpevine@hotmail.com)

Tanya Doty

021 296 1375

Heather Eggers  
0274540796



## COMMUNITY

### Upper Moutere Volunteer Fire Brigade Call Outs

Callouts from 16th Nov thru to the 15th Jan.



- 17.11.15 Alarm activation Mapua school
- 23.11 House fire Brooklyn valley
- 24.11 Medical assist Flaxmore road
- 30.11 MVA Motueka valley
- 4.12 Shed fire Graham valley
- 7.12 Chimney fire Supplejack Valley
- 12.12 Alarm activation Upper Moutere School
- 8.1.16 Rubbish heap fire Gardeners Valley

 **architecture studio | mapua**

**has moved.**

**come visit .**

**Simone Wenk**

Reg. Architect (Germany), LBP Design 2 (NZ)

03 540 3282 / 021 1049 039  
simonewenk@xtra.co.nz

**Shed 4, Mapua Wharf**  
www.architecturemapua.co.nz



## We can help your business grow



**PITT & MOORE**  
LAWYERS AND NOTARIES PUBLIC

Nelson 03 548 8349  
Richmond 03 543 9090  
www.pittandmoore.co.nz  
Lowdell

## Andrew Prouting (Chops)

**M** 027 305 2412

**P** 03 543 3613

**E** chopsfencing@gmail.com



*To view our work visit Chops Fencing on Facebook*

- Complete Fencing Services • Post Driving
- Pailing Fences • Rural Fencing • Pea Straw • Log Splitter



## Rural Women NZ.

At a recent National conference held in Nelson the problem of water storage was discussed and it was decided to encourage all local authorities to introduce by laws to include the installation of appropriate rainwater tanks on all new domestic properties and to also ensure the issuing building consents in existing building that appropriate installation is included as part of that consent.

If anyone has comments please let me know

Such a lot of water goes onto the ground, water which would be of great use in seasons like this for the garden, car washing or other activities.

Another discussion was on speed limits past schools. It was decided to advocate that a maximum speed of 40kmh past all schools within a 50/70kph speed zone during hrs of 8am – 9.30am and 2pm – 4pm. and also on highways or roads with a 100kph speed limit a restriction of 70kph limit during the same hours.

Schools are very busy places at these times and we need to be very aware of the children being dropped off and picked up.

Pat Moore



Taking orders now for these groovy tea towels designed here in Upper Moutere by [Anny De Groot](#) and [Samantha Slade](#), fundraising for our relay for life team (Wiggle n Jiggle).

You can contact us through our facebook page: Team Wiggle n Jiggle, they will also be for sale at the Sarau Festival in the cooking competition tent.

All money goes to Cancer Society Nelson to remain in our area. Thank you in advance for your support and donations!

## DOVEDALE COUNTRY AFFAIR.

**Sunday 14th February 2016.**

**11am – 4pm**

**Dovedale Reserve**

**\$2 adult entry**

**Children free**

Always a good day out in the Country!

Some stall sites still available.

Ring Ann Win on (03)5433832 or

email

[evanannwin@ruralinzone.net](mailto:evanannwin@ruralinzone.net)

for details



**HIGH PLACES**

**[www.highplaces.co.nz](http://www.highplaces.co.nz)**

*trekking worldwide*



**Torres del Paine, Patagonia**

**Patagonia - Chile Volcanoes - Peru  
Nepal - Bhutan - Indian Himalaya  
Kilimanjaro - Iceland - Greenland**

**Tel 03 540 3208 [treks@highplaces.co.nz](mailto:treks@highplaces.co.nz)**



# FIREBUDDY

HELP US KEEP YOU SAFE

## Christmas! What Christmas?

I don't remember ever being so busy in the run up to Christmas. I'd made my plans to finish up and set aside Christmas Eve to do the shopping etc. Then our man, in his infinite wisdom, came and cut the hay. It didn't go down too well when I told the wife she'd have to go out and buy a pristine new vacuum cleaner herself and get it wrapped whilst I cleared the fields. My holidays were spent renovating the new offices ready for a sensational 2016, so all in all I now need a break!

We did manage a fairly lively New Year, which was exacerbated by my son inviting 150 friends. All went well though until the following morning when a small group were asked to help clean up. Hungover and probably still a little merry, they made the heinous mistake of not putting in the required effort demanded by my wife. They chose to leave rather than be subject to further encouragement and on the way one thought it would be fun to shoot a firework out of the car into our property.

I was woken from my slumber on New year's day by my daughter stating that the paddocks were ablaze. Naturally, I told her to shut up and rolled over. She eventually persuaded me that this was no joke so donning my firefighter's head went to investigate.

Sure enough, a large section was ablaze. The last thing I wanted on New Year's Day was to be suitably embarrassed by calling out my own brigade, so I attempted to beat it out with my jandles. Not a chance!

### Sponsored by WebDog

WebDog is run by entrepreneurs who run their own profitable web businesses so if you need an online solution give the Old Dogs a bark:

[WebDog.co.nz](http://WebDog.co.nz)



Register and let's keep in touch [www.firebuddy.co.nz](http://www.firebuddy.co.nz)

A fire in these hot, dry conditions moves faster than you imagine. Luckily it was a day when the high winds we're receiving were calm, nevertheless by the time the guys arrived over a good hectare was gone.

It was a moment of stupidity by the teenager, who in all fairness came back the next day pretty shell shocked. The issue is that there have been a number of similar events and as this kid had been caught the police considered making an example of him. He was not only facing criminal charges but as I've already warned in previous articles, he was legally liable for the costs of the rural crews.

As he did seem genuinely remorseful for his actions I took the decision not to press charges as this would have affected him for life.

So, all I ask this year is to THINK. We're all in this together and a modicum of awareness will see us through.

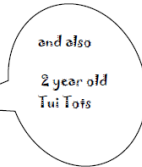
FireBuddy.co.nz is now on [facebook.com/firebuddynz](https://www.facebook.com/firebuddynz) and [Neighbourly.co.nz](https://www.Neighbourly.co.nz) ... pop and see us.

## FIRE SHOP

FireBuddy Webshop Open  
For Business!

[eshops.co.nz/firebuddy](http://eshops.co.nz/firebuddy)





News from your Preschool in The Moutere

I am writing this sitting in my cosy tent at one of the best places in Aotearoa New Zealand's West Coast.

At this time, from this location it is hard to believe that by the time this snippet is published in front of you, Harakeke has been in full swing for 2 weeks already.

A highlight at the end of 2015 was again our annual Christmas Camp at Kina Beach Reserve - what a great way to celebrate a successful wonderful year with all the whānau (families and teaching team). We were blessed with gorgeous weather and totally enjoyed the 'wind down' before the festive season. Our Facebook page has some great footage to show what an awesome time we had.

Well, for now I wish all of us another year full of new learning experiences, fun, play, new friends, positive relationships, good health and peacefulness.

As usual we will endeavour to let you have a glimpse into our wonderful, magical learning environment for 2 to 5 year old children and those of us who never lost the desire to explore, discover and create, through the Grapevine - or even better-just pop in to see for yourself.

***Ka kite your Harakeke team***

## Turn the Screen Off - A Solution by Debbie Ball

Our 13 year old daughter was concerned about the time her friend was putting into a website and developing an e-mag – wonderful stuff, but lots of screen/sedentary time.

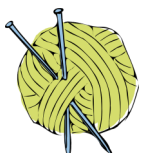
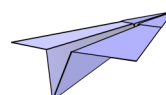
So, rather than an unhelpful “You should get out and do more things!” comment, our daughter sent her a list of interesting things to do.

I have found, with our children, the best way to get someone involved in a new pursuit is for me to get everything organised and then to start the project, thinking aloud, making mistakes, figuring it out. If the children are interested they will either watch, or start to participate, at which stage I will back out quietly.

Does anything on this list grab your attention? Something you'd like to try?

Grab some gear and have a go!

drawing, painting, cooking, photography, birdwatching, reading, flower-arranging, making playdough, making charts, making lists to tick when having a trip out, brushing the dog, hide and seek, teaching the dog tricks, finding out new stuff about your camera, writing letters, making a swing, copying fancy fonts, making posters – one for each bird/dog breed etc, making soft toys, making dresses for dollies or teddies, crayon rubbings, making chocolate leaves, trimming bushes, planting a little garden, making a nature movie, making a hut, eating, making people files (famous people/friends/family), making a miniature garden, looking for owl pellets, making a book, making a costume, writing a script, putting on old clothes and getting muddy (only with permission!), looking through old notebooks, making a weather station, making a tree hut, cutting down a tree, practising falling over painlessly, painting with water, making a boat to sail on pond, wall art in bedroom, knitting a scarf, looking at the stars, make an ant house, make a miniature scene, start a diary, illustrate poems, paint by numbers, decorate an old shirt with markers, bible journalling, learn shorthand, pressing flowers, making bookmarks, making little nature things to sell, make birdy afternoon tea, going far from house and do silly singing, make a giant nest to sit in, cross-stitch, gathering seeds, learning/ practising an instrument, memorising scripture, biking, nature collection (in basket), making paper for letters, make a leaf crown, rubber stamping, finger painting, card making, woodworking, weeding the garden, painting, making a balm, making a bird feeder, paper planes, making a puppet, box television, bubbles, paper plate masks, making a castle!





## ANIMALS

Hello Animal Lovers

Happy New Year to you and your animals, let's hope it is a good one.

I am starting the year with a sobering article as I believe the following issue affects everyone.

It is a fact that bees and butterflies are on the decline. Since 2006 bee colonies all over the world have collapsed and half off all butterflies face extinction. This decline coincides exactly with the phenomenal explosion of mobile phones and hands free phones as well as smart meters on houses which require towers to send out electro magnetic radiation which is invisible but can be recorded. In the past ten years there has been a tremendous increase in users worldwide with currently 10 billion users and increasing all the time. The electro magnetic radiation significantly disrupts the naturally occurring magnetic frequency of the earth. All life on earth has evolved over millions of years to tune into this frequency and bees, butterflies and birds use it for their navigation. Bees in recent years are not returning to their hives and therefore the colony dies.

Bees, and butterflies particularly are essential for pollination and needed for human life. If the present trend continues they could be wiped out in ten years which will have disastrous consequences for plant life and all plant eaters. Already 4G towers are being rolled out to promote even stronger signals which only have more disruptive effects on bees, butterflies and birds as well as affecting all other life as well.

Here in the beautiful Tasman and a long way from big cities the effects are not as strong but we should still be aware of this frightening trend which is affecting our flying friends so significantly. How sad it would be if they were to disappear from our world.

Always happy to answer any animal behaviour questions.

Sue Mott

Animal Behaviourist

039700952

For those of you who wish to find out more I refer you to "Resonance – Beings of frequency" on YouTube which explains things more thoroughly and provides evidence for these claims.



### *Caring for all creatures Great & Small*

In your area on Thursdays.

No mileage charged on this day.

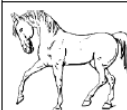


**Phone (03)5441200** for appointments and more information.

35 McGlashen Avenue, Richmond

and

25 Edward Street, Wakefield



### **Experienced Help with Horses**

All types of assistance provided for horse and rider: Riding and jumping lessons, ground work skills, confidence building, young horse and rider training and extra help when you need it.

**Phone Holly to discuss your requirements:**

**Holly Fitzgerald - Tel: 027 5556183**



Shearing, crutching and sheep care  
specialising in  
**LIFESTYLE BLOCKS**  
Portable machine

**Ph 021 533 350**

**SUE'S SHEARING SERVICE**

RING FOR A NO-OBLIGATION QUOTE



## A guide to Barbers Pole worm management

Barber's Pole (*Haemonchus contortus*) is the worm most likely to strike fear into the heart of the average sheep farmer. It sucks blood from the stomach lining and big burdens can remove enough blood to kill lambs, and less often, adult sheep.

It can seem to strike without warning, mostly in late summer and autumn, though we do see the odd case prior to Christmas from time to time. Most outbreaks occur after a spell of hot dry weather followed by some moisture. The textbooks say 25mm of rain, but a few heavy dews can be enough to spark it up.

With the right environmental conditions, and in the absence of effective management/control, 'outbreak' situations occur where larval numbers on pasture rise rapidly - their ingestion by grazing sheep results in the sudden appearance of ill-thrift, lethargy and deaths.

One of the problems with Barber's Pole is in predicting the seasonal onset of challenge.

Anyone who's been caught by a decent Barber's Pole outbreak can be forgiven for thinking it's not worth taking the risk of leaving stock unprotected. However this can result in drench over-use and, given that you want to minimise the use of long acting drenches for sustainability reasons, how could you better assess the situation on your place?

- A faecal egg count (FEC) of lambs, even while still on mum, can be a guide - the egg counts of un-weaned lambs can vary enormously, and very high FECs could point to Barbers Pole being present.
- Consider investing in a larval culture - we send a mixed faecal sample to the laboratory to hatch and grow out the eggs. The larvae are examined under a microscope and we get a breakdown of the species present.
- Often pre-Christmas there will be no or very few Barbers Pole in these samples, but if you find there are, it can be a cue to early action.
- If you are handling lambs, look for paleness of gums and eye membranes and/or 'bottle jaw'. Also there may be no scouring to indicate a worm problem.
- Risk assessment:
  - Likely level of pasture contamination - if you carried more lambs into winter than normal last season contamination could be higher.
  - Drenching history of hogget's and ewes as far back as last autumn.
  - Grazing history and feed levels.
  - Presence of large numbers of wild goats.

Counteracting this problem is by using long acting drenches throughout the summer and autumn – the best of these available contain *Closantel* e.g. **Genesis Ultra**. The downside of this is the long withholding period (56 days), which will interfere with the ability to send lambs to the works.

Medium acting drenches contain *Moxidectin* e.g. **Exodus SE**. These have a shorter withholding period (10days) which gives more flexibility to allow drafting of lambs for the works but more frequent drenching is required or **Exodus 1% Injection** with a meat withholding period of 35 days.

**Call into the clinic and discuss pack sizes to suit your farming operation**





## Circling Falcons.

In our valley the hawks still soar and glide, and flap away from the few cars as they feast off the road kill. However there is a new kid on the block. I was always aware that there was a pair of native falcons up in the pine forest but they were rarely spotted. The locals say they never hunted down the valley. This year they are a continual presence. The falcons are beautiful to watch as they circle and circle seeking their prey. They have finely patterned broad wings and a long tail and are impressively maneuverable. But the price of their presence has been high. The native falcons seem to like their food freshly killed. They dive like Stukas onto unwary fantails or slow moving chicks. This year there have been no processions of ducklings. No pukeko chicks. In fact no Paradise ducks or pukeko at all. In past years there were always three or four fantails flitting around and supervising any gardening. This year it is rare to see a fantail. The families of anxious quail racing across the lawn are absent. Where is the kingfisher. The song of the bellbird is much less common than last year. Tuis are abundant and seem to hold their own in the aggression stakes but the other species are notably absent. However the falcons continue to circle and circle.

Keith Hawke

*Interesting that after receiving this piece on Falcons, two other people mentioned they had seen falcons - so now we have sightings in the Harley Road area, Supplejack Valley and at the base of the Moutere Hill. Drop us an email if you've seen any to umograpevine@hotmail.com*

## Horse Cover & Gear Repairs

+ Horse Cover Washing

+ Prompt Service

+ Good Rates

**Contact Lawrie**

**1350 Moutere Highway**

**PH 5432 234**

## Machine Mulched Horse Manure

Well composted, worms galore!

\$25 per trailer

20 Wilson Road, Upper Moutere

Phone/Txt 027 452 3906

## TOWN & COUNTRY VET RICHMOND



*Dog Wash K'9000*

**Coin and note operated**

**Open 24 hours**

**7 days**

## RUSSELL LAWRENCE FENCING

25 yrs experience fencing.

Lifestyle to high country.

Stock yards & horse arenas.

Residential fencing. New fences.

Vineyard post replacement.

Prompt & respectful horse burials.

Located in Upper Moutere.

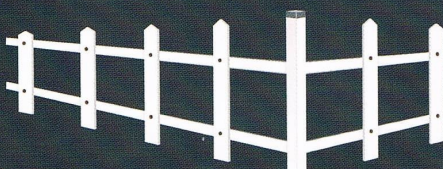
**RUSSELL LAWRENCE**

03 5432285

027 5432016

**FENCING CONTRACTOR**

tnrlawrence@gmail.com





## Endurance spraying

All types of weed spraying  
Gorse and Brushweed  
Control

Commercial • Residential  
Forestry Road Spraying  
Moss treatment for lawns,  
concrete areas and decks.



Contact Pete Hughes  
021-194 2654 A/H 03 544 2654  
Growsafe certified •  
Approved Handler

## GELLING CONTRACTING LIMITED

### Earthmoving Contractor

- Site Clearing & Foundations
- Driveways & Trenching
- Water Delivery
- Gravel & Landscape Supplies
- Ditch Cleaning
- Available in your area



Pat Gelling 027 246 0953

[gellingcontracting@xtra.co.nz](mailto:gellingcontracting@xtra.co.nz)



## MOYLAN CHAFF LOCALLY GROWN

Oaten Hay Chaff - \$12 per bag (oats + hay)

Oaten Chaff - \$11 per bag (white oats)

Lucerne Chaff - \$14 per bag

Prices incl GST  
Bags approx 10kg

Hay - for sale on request

Conveniently packed in smaller  
bag size for easy handling,  
with a twist tie allowing you  
to re use the bag.



Smaller bags mean you can  
choose to mix and match  
different chaff varieties to  
suit your horses diet.

Contact: Robyn or Greg  
03-543-2710 or 027-205-6284

# Harcourts™

SINCE 1888

PROPERTY SALES (NELSON) & REAL ESTATE LTD MREINZ

LICENSED AGENT  
REAA 2008

## Harcourts Mapua

### "The Big Little Office"



Wendy Perry

027 249 1701



Gavin Barlow

027 559 1993

Harcourts Mapua - 2A Iwa Street - 03 540 3425

[www.teamtasman.co.nz](http://www.teamtasman.co.nz)



# Simplicity Funerals

Simply respectful. Simply affordable.



## Planning for the future...

Simplicity Funerals Nelson have an information pack entitled "My Life, My Funeral" which contains a number of pamphlets with information about pre-planning your own funeral, and an application form for the FDANZ Funeral Trust.

This is a useful tool for all of us as we plan for our future. Much like making a Will, completing the information on the form provides peace of mind to families when faced with bereavement.

**Contact us for more information or to receive this free information pack.**

69 Haven Road, Nelson 7010  
[www.simplicity.co.nz](http://www.simplicity.co.nz)

**03 539 0066**



# EDWARDS LTD COUNTRY BUILDINGS



*Uniquely Crafted Homes & Outbuildings*

We also specialise in:

**BRICK & BLOCKWORK  
RETAINING WALLS • FOUNDATIONS • DECKING  
GARDEN WALLS • STONEMASONRY**

**FOR HIRE: 2.5T Excavator / Tip Truck** (Operator available if required)  
**Scaffolding** (Supply & Erect / Supply only)

**Call Tim 021 320 306**



## Nelson Shade Solutions

*Blinds, Shade Sails, Awnings*

- Shade Sails
- Awnings
- Umbrellas
- Blinds
- PVC Screens
- Business
- Residential

**03 544 6352**

44 Beach Road, Richmond



# MyMove Property Management Mapua



**Protecting your investment  
Maximising your return.....**

Also looking after your requirements in Richmond & Motueka

**03 544 2065**

**Amanda James - 027 472 1960**

**Brendon Taylor - 022 384 9791**

**Harcourts**

**Harcourts**

## TONY HAHN DECORATORS

For all your Decorating Requirements:

Painting, Wallpapering, Water blasting,

Spray painting and more....

25+ Years Experience

**0800 REDECORATE**

**0800 733 326**

**Cell 027 442 5010**

**PO Box 48, Upper Moutere**

[hahn@clear.net.nz](mailto:hahn@clear.net.nz)



## PANZ - Pastel Artists of New Zealand

Our pastel year was concluded on a very wet day at the beginning of December. Ron and Fiona Oliver kindly hosted our Christmas party and we discovered that PANZ member Ron can not only paint but also wield with great dexterity a mop and bucket! Our spirits were not dampened. Everyone enjoyed the barbecue, salads, wicked desserts and some shared resolutions for the year ahead.

Inspiration now has me in its clutches (and believe me, this doesn't happen often). Two pictures chosen from a host of options by the group are now dedicated to the "Nelson PANZ Winter Challenge". The task is not to reproduce the originals but be inspired by them to create something new, unique and award-winning (I'm fibbing about the last one but you never know). I'm using the skills previously taught by Marian Painter and adopting a Cubist theme. All our efforts will be on display when we reconvene in February and I will have my camera on standby to record them for posterity (otherwise known as the Nelson scrapbook).

Despite the break, the committee is still working hard to perfect arrangements for the National Art Awards and Convention being staged in Mapua in April. The two

masterclass workshops are already sold out and registrations well ahead of the anticipated January target. We are delighted.

Sessions in the Community Hall will recommence in February. The Art Awards will undoubtedly be the highlight of our year but we will still have a programme of Tuesday challenges and days of relative calm when we just paint!

If you want to find out more about pastels and the PANZ art group in Mapua visitors are always welcome. Just call into the Community Hall on a Tuesday morning between 9 a.m. and 12 noon when you see the PANZ board outside. Or contact Glenys Forbes on 540 3388 for more information.

*Sue England (540 2934)*



**\* BOOKINGS  
RECOMMENDED**

# NEED YOUR CAR EVERYDAY?



**WE HAVE  
COURTESY  
VEHICLES  
AVAILABLE\***

**mouteremotors**  
Main Road, Upper Moutere

**Ph 543 2707**

**BLACKCURRANT AND PINOT NOIR JELLY**

(Makes 8 x 125ml sundae glasses or 24 shot glasses)

This refreshing dessert is enjoyed because it isn't rich or overly sweet

**INGREDIENTS**

350g (1 + 1/2 cups) castor sugar 500ml (2 cups) pinot noir 3 star anise If you are using fresh berries 14g (3 tsp) gelatine 360g blackcurrants If you are using frozen berries 20g (6 tsp) gelatine 540g frozen blackcurrants

**METHOD 1.**

To make pinot noir syrup: Place sugar, pinot noir and star anise into a saucepan set over a gentle heat. Stir till sugar is dissolved. Increase heat and heat to just below boiling. 2. Strain pinot noir syrup to remove star anise. Place 125ml (1/2 cup) pinot noir syrup in a small bowl and sprinkle gelatine onto syrup. Stir to dissolve. 3. Pour into remaining pinot noir syrup and stir till combined. Leave to cool. 4. Divide blackcurrants between serving glasses and add pinot noir syrup to come up to top of glasses. 5. Refrigerate for at least 2 hours, preferably overnight, or till set.

From NZ Black Currant Co-operative website

<http://www.nzblackcurrants.com>

**UNWANTED BOOKS**

Books still  
needed for Sarau  
Festival Sunday  
31st  
January

Bring them on  
the day or  
contact  
Sharon on  
543 2814

**FROZEN BERRIES**

New Seasons  
Boysenberry and Karaka Berry  
2nd grade

- 1kg freeflow packs - \$6.50kg
- 10kg bulk boxes - \$60.00

Phone 5432888



**Riverside  
Café**

- \* Wild Meats, Organic & Seasonal Specialties
- \* Fantastic Coffee, delicious cakes & brioche
- \* Awesome kids playground, tranquil garden
- \* On the Great Taste Cycle Trail

**OPEN 7 DAYS A WEEK**

9.30am to 4.30pm for brunch, lunch, coffee  
Fri & Sat evenings from 6pm for dinner



289 Main Road Lower Moutere  
Ph: 03 526 7447

[www.riverside.org.nz](http://www.riverside.org.nz)  
e: [cafe@riverside.org.nz](mailto:cafe@riverside.org.nz)



RiversideCafe&CommunityNZ





## GARDENING

Well many of you might have turned your back on your garden for this month – you might have been on holiday perhaps and returned to a parched patch or maybe you've just been enjoying summer activities in the wider area.

105mm of rain was joyfully reported in Rosedale road Monday 18<sup>th</sup> January and the next day saw plenty more.

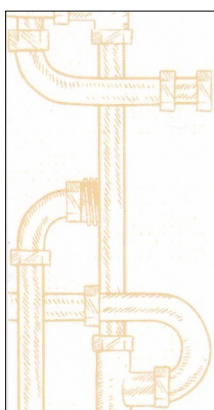
And now we get to enjoy the flow on effect of this glorious rain. Quail chicks are on the increase from here on in. Crops will be thriving, trees reviving and weeds will be rejoicing. Watch out for facial eczema in your grazing animals, the warm moist conditions will bring many challenges in one way or another but isn't it lovely to have full water tanks again.



### KANGA LOADER FOR HIRE



**SMALL SPACE SOLUTIONS**  
Operated or Dry Hire  
Attachments Available: 4in1 Bucket,  
Augers, Other attachments on request  
Free Quotes  
Ph (03) 543 2033 / (027) 358 4477  
kangacontracting@gmail.com



### MyPersonalPlumber

Alex Bint  
0800 444 343

027 542 4329  
alex@mypersonalplumber.co.nz  
www.mypersonalplumber.co.nz

1366 Moutere Highway,  
RD1, Upper Moutere, 7173

### Standing Grass Wanted Mark Carey CONTRACTING LTD

Hay and Baleage production and sales,  
Land development and re-grassing

Phone (03) 526 7004  
Cell: 021 454 000  
Email mark.carey@xtra.co.nz  
Lower Moutere



GARDENER/PLANTSWOMAN

Very experienced

Maintenance ,makeovers or restoration

Fiona Ph :03.528.7653



Call Andrew on 027 4460 739 for a  
quote or estimate on your next project



[www.facebook.com/andreweggersbuilders](http://www.facebook.com/andreweggersbuilders)



e: eggersbuild@ts.co.nz  
m: 027 446 0739  
t: 03 543 2757  
f: 03 543 2823

76 martin road  
rd2 upper moutere  
nelson 7175



**Water Features**  
**Paving**  
**Rock Work**  
**Irrigation**  
**General Landscaping**

Michael Hardy  
**Ph: 021 443 908**  
A/H: 03 543 2555

**A great job at a GREAT Price!**



**SUN  
ELECTRICAL**  
Phone: 03 540 2367  
www.sunelectrical.co.nz  
Tony: 027 3784 580  
Troy: 022 080 4751  
124 Aranui Rd  
Mapua, Nelson 7005  
sunelectrical@xtra.co.nz  
Domestic  
Industrial  
Commercial  
Caravan WOFs  
Solar Power Systems

**Our highly skilled and experienced electricians can provide solutions to meet your electrical needs**

- New house/shed wiring
- Rewiring
- Alterations and repairs
- Hot water elements and thermostats
- Energy saving solutions
- Power bill forensics
- Garden and outside lighting
- Solar power systems
- Caravan electrical warrants
- Sewerage and pumping systems
- Test and tag
- Switchboard upgrades and replacements
- Oven and store repairs
- Urgent breakdowns
- Industrial wiring and maintenance

**www.sunelectrical.co.nz**



**Tasman Bay Contracting Ltd**

**PROPERTY MAINTENANCE SPECIALISTS**

- Lawn Mowing Residential • Property Maintenance
- Leaf, Weed & Green Waste Removal
- Lifestyle Block Mowing & Section Clearing
- Water Blasting • Digger • Fencing • Commercial Gardens



**TASMAN BAY CONTRACTING  
SHELTER BELT TRIMMING**

Large Hedge Trimming/Reduction  
Olive Tree Pruning/Mechanical  
Orchards • 3 Trimmers Available

*Locally Owned & Operated*

*Servicing the Tasman Bay to Nelson Regions*

**SUPPORTING SMALL BUSINESS**


**FREEPHONE 0800 891 634**

**FULL PACKAGE PROPERTY CARE PROGRAMMES**

*Locally Owned & Operated*

**Peter Collins**  
M: 027 513 5588

E: tasmanbaycontracting@gmail.com  
www.tasmanbaycontracting.co.nz



**Whole Barley** 25 kg bags \$19  
per bag including GST phone 021  
454 731 or 03 526 7004.

**Barley crushed** 25 kg bags  
\$22 per bag including GST phone  
021 454 731 or 03 526 7004



**ABEL TASMAN  
TREE SOLUTIONS**

**Your Local Tree Specialists**

- All work fully insured
- We cover all aspects of tree care from planting and reticulation systems, to tree management and hazardous tree removal

**Ph: 0223 276 164**

**LEIGH BRIARS ARCHITECTURE**

03 543 2667  
021 215 0946  
briars@ts.co.nz  
RD 2 Upper Moutere  
Nelson 7175



# MAPUA AUTO CENTRE

'YOUR AUTOMOTIVE SPECIALIST'



Fully Equipped  
Automotive  
Workshop

All Makes  
& Models

6 Courtesy  
Cars

W.O.F.



20 WARREN PL, MAPUA  
PH 03 540 2180  
mapuaauto@mapua.biz  
www.mapua.biz/mapuaauto



## Graeme Smith (MNZIQS)

### Independent Cost Plan



- Quantity Surveyor
- Construction Cost Planner
- Building Estimator
- Cost Management Consultant

Residential & Commercial  
Insurance Rebuild  
Valuations

Ph. 64 3 526 6772 Mob. 0210 444 097  
E. graeme@costplan.co.nz  
27 Goddard Rd. RD1 Upper Moutere, Tasman 7173



## JasonFrater

BUILDERS LTD

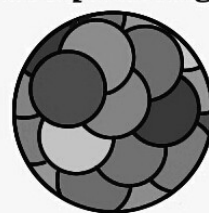
Cell: 021 743 497 Ah/Fax: 03 528 0337  
Email: info@jasonfraterbuilders.co.nz  
www.jasonfraterbuilders.co.nz

## Richard Smethurst Landscape Design



rich.smethurst@gmail.com

03 540 2843



## SELLING YOUR HOME?

UNBEATABLE LOW FEE

capped at **\$10,000** +GST

Debbie Watson 021 462 629 / 03 543 2629  
debbie.watson@tallpoppy.co.nz www.tallpoppy.co.nz



Bulsara Ltd REAA Licensed MREINZ 1 0800 82 55 76

Licensed Real Estate Salesperson (REAA 2008)





## HEALTH

### Mapua Natural Health Clinic

Do you have an ongoing health issue that is not responding to conventional medicine? Do you want to feel really well and happy?

Are you willing to try something different?

Integrated sessions available.

**February and March Special - \$50 Usually \$80**

Jude Twin

[www.mapuanaturalhealth.co.nz](http://www.mapuanaturalhealth.co.nz)



021 2020339



### Ora Reflexology & Craniosacral Therapy

- ☞ Maternity packages
- ☞ Senior citizens discount
- ☞ Evening & weekend appointments

**GRAB ONE offer available from 2nd September**

Phone Kate Mander on 021 101 9226  
Ora Health Centre, 69 Aranui Rd, Mapua

### LOCAL MIDWIFE CLARE SPRATT

**Ring Clare for friendly professional maternity care and advice.**

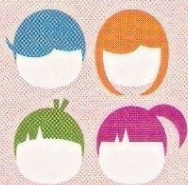


*I offer full 24 hr maternity care from conception through to 6 weeks post natal, home/hospital and water births, birthing pool available, natural remedies, free pregnancy testing, breastfeeding support and much more.*

T: 03 526 7764

M: 0273324929

E: [midwifeclarespratt@me.com](mailto:midwifeclarespratt@me.com)



**Country Cuts  
Hairdressing**

**Karen**

For all hairdressing services

14 Kelling Road  
Upper Moutere 7175  
(03) 5432297 or 0274 728863

Phone or email for an appointment  
[k.jrhind@xtra.co.nz](mailto:k.jrhind@xtra.co.nz)

### DOROTHEA TEBBENHOFF

HEILPRAKTIKERIN  
LICENSED ACUPUNCTURIST

25 GREENWOOD ST  
MOTUEKA

[WWW.TASMANACUPUNCTURE.CO.NZ](http://WWW.TASMANACUPUNCTURE.CO.NZ)

**03 528 6239**

MNZRA, ACC PROVIDER

*Acupuncture  
Chinese Herbal Medicine*



*Chí*



*"Discover Enhanced Health and Well-Being"*

- BIODYNAMIC CRANIOSACRAL THERAPY
- THERAPEUTIC / REMEDIAL MASSAGE
- REFLEXOLOGY — AROMATOUCH
- ZYTO BIO-READINGS FOR dōTERRA OILS

**MELISSA POTTER**

(I.T.E.C., D.REF, R.M., BCST DIP, P.A.C.T, YOGA DIP.)

PH: 540 2575 PH/TXT: 021-1368439

[WWW.THEARTOFTOUCH.CO.NZ](http://WWW.THEARTOFTOUCH.CO.NZ)



# Mapua Natural Health Clinic

Achieving Health and Wellbeing

Sometimes the questions seem complicated. Know that the answers can be simple

## Eating for Health

### Vitamin D

Vitamin D is important for good overall health and strong healthy bones. It's also an important factor in making sure your muscles, heart, lungs and brain work well and that your body can fight infection.

Your body can make its own vitamin D from sunlight. You can also get vitamin D from supplements and a very small amount comes from a few foods you eat.

The vitamin D that you get in your skin from sunlight, and the vitamin D from supplements, has to be changed by your body a number of times before it can be used. Once it's ready, your body uses it to manage the amount of calcium in your blood, bones and gut and to help cells all over your body to communicate properly.



Vitamin D

Your body gets vitamin D mainly from sunlight. You can also get vitamin D by taking supplements. Discuss your vitamin D needs with your natural health specialist and take as directed.

Resources -

[www.vitaminDcouncil.org](http://www.vitaminDcouncil.org)

Peppermint Oil - doTERRA Tools

Jude Twin 021 2020339

[www.mapuanaturalhealth.co.nz](http://www.mapuanaturalhealth.co.nz)

## doTerra Essential Oil

### doTerra Peppermint Essential Oil

The peppermint plant is a hybrid of watermint and spearmint. A high menthol content—like that found in the doTERRA Peppermint essential oil—distinguishes the best quality Peppermint from other products. Frequently used in toothpaste and chewing gum for oral health, Peppermint may also help alleviate occasional stomach upset and may promote healthy respiratory function.



doTerra Peppermint Essential Oil

- Use a drop of Peppermint with Lemon in water for a healthy, refreshing mouth rinse.
- One to two drops in a glass of water, may alleviate an occasional stomach upset.
- Add two to three drops to your favorite smoothie recipe for a refreshing twist.
- Place one drop in palm of hand with one drop Wild Orange and one drop Frankincense and inhale for a mid-day pick-me-up.

The mental / emotional balancing aspects of Peppermint Oil. It invigorates the body, mind and spirit and reminds us that life can be happy and there is nothing to fear. When a person feels disheartened, Peppermint oil can assist in rediscovering the joy of being alive.

## In the Kitchen

### Summers here - Salad time

#### Orange and Fennel Salad



- ★ 3 lg Oranges (peeled & sliced)
- ★ 1 med Fennel Bulb (finely sliced)

Dressing -

- ★ 2 cloves of garlic (crushed)
- ★ 3 Tbs Orange juice
- ★ 2 Tbs Olive oil
- ★ Salt and pepper

In a bowl mix the Oranges and fennel together.

Wisk the dressing ingredients together and pour over the salad ingredients.

#### Watermelon and Feta Salad



- ★ 500 mgs Watermelon (cubed)
- ★ 1 sm Red Onion (finely sliced)
- ★ 180 gms Feta (crumbled)
- ★ Mint leaves
- ★ 2 Tbs Olive oil

In a bowl mix the salad ingredients together. Place on a serving dish and drizzle with the olive oil. Sprinkle with freshly ground pepper and serve.

**Delicious!!!!!!**



## Yoga.

Breathe - Be Still - Surrender - Be Strong

Ashtanga Yoga is flowing and dynamic,  
integrating breath with movement

Tuesday 5.45-7.15pm

Beginners Welcome

\$15 BYO yoga mat and blanket

At: 'The Woolshed', Lancewood Villa,  
109 Kelling Rd, Upper Moutere

ph 03 5530353 [www.angepalmer.com](http://www.angepalmer.com)

\*last class for year December 15<sup>th</sup> + chai and cake!

## Moutere Massage

\* Sports \* Deep Tissue \* Injury Repair \* Bowen Therapy  
\* Foot Reflexology \* Pregnancy Massage \* Remedial Work

Now operating from Moutere Hills Community Centre



Fiona Ramsay

Certified Sport/Remedial Massage Therapist

Ph/Txt 027 4523906

Tuesday and Wednesday, 10am – 4pm

Late night Thursday, 6pm – 9pm

At Moutere Hills Community Centre



Catering for all your sports massage needs. Gift vouchers av



Benefits - Physical Fitness,  
Re-energizes the body,  
Releases blocked energy and Relaxes  
the mind.

Tuesdays at Tasman Bible Church, 6 Williams Rd, Tasman  
9.30am - 10.45am Starts 20th October

Private one-on-one sessions available upon request.

What to bring - a yoga mat, light blanket and water bottle  
Drop-in class \$10. All levels welcome

ENQUIRIES CONTACT JO - 0211709495

Archived coloured copies of the Grapevine are  
available at

[www.mouterehills.org.nz/community/the-grapevine](http://www.mouterehills.org.nz/community/the-grapevine) courtesy of the Moutere Hills Community Centre Staff.

Grapevine circulation is 1300 copies. This issue  
has been constructed by volunteers: Susan Brennan,  
Tanya Doty, Beverley Sellers, Sharon Beuke, Avril  
Stephens, Hilary Williams and Heather Eggers.

Views expressed are not necessarily those of  
the voluntary editors and no responsibility is  
taken!



**Taoist Tai Chi**  
**Internal Arts of Health**  
No bookings required / bring a friend  
visit [www.taoist.org.nz](http://www.taoist.org.nz)

**6 x week Introduction to Tai Chi**  
**Tuesday, 23 February 2016 7pm - 8.30pm**  
**at Upper Moutere Community Centre**

Phone 03 545 8375 (please leave a message)

**MAPUA**  
**NATURAL HEALTH CLINIC**  
BodyTalk / Healing  
Zyto Compass - Wellness Scanning  
DoTerra Essential Oils



Jude

021 2020339

[www.mapuanaturalhealth.co.nz](http://www.mapuanaturalhealth.co.nz)



Hatha Yoga in the Upper  
Moutere. On Mondays &  
Wednesdays.

Please ring Jane for more  
information. 0272635211