

FREE DELIVERY - DONATION APPRECIATED!



# The Grapevine

MOUTERE HILLS COMMUNITY NEWS

**AUG**  
**2014**

## DOWN ON THE FARM

### LOCAL LIVES

**V**isitors are already coming from far and wide to Animal Farm in Gardner Valley Road, which opened its doors in March. "We wanted people to experience a real slice of farm life," says Vicky Pattinson of this interactive 17ha farm park, where people can get up close and hands-on with the friendly animals, who roam free in large petting paddocks.

Buckets of farmyard nuggets are available to tempt the deer, yaks, ostriches and alpacas even closer, and various activities are on offer to make the experience extra fun.

These include bottle feeding in season, donkey rides, llama walking and trailer rides. There's also 'stream dipping' – a chance to catch native crayfish in nets and bowls, take a look, then release them back into the wild. For those needing a rest from the action, a food cart sells drinks, cheese scones, hot chips and toasties.

"We had a school holiday group here recently, and one little girl said she'd never seen a pig or a goat before, which makes it all worthwhile," says Vicky. She's referring to the hard yards that have gone into getting this project off the ground, with both Vicky and husband David working seven days a week for the past two and a half years to get Animal Farm up and running.

Both have a keen interest in rare breeds, which is why they returned to Nelson with their two sons, now aged 20 and 17, after 11 years in England, where Vicky was a primary teacher and David a finance director. "We bought the land in 2010 and came back in 2011," she says. "It then took us two years to get resource consent."

Their own home and 45ha farm block sits above the farm park, and it's here that they breed the animals. "It was a huge gamble, and we had to get some of the animals before the planning consent was approved. We had red deer and highland cattle up on the farm because you need to get them while they're available."



**Vicky and David Pattinson have turned their farm park dream into reality.**

Members of the NZ Rare Breeds Conservation Society, David and Vicky did their research before collecting animals from around the country. Endangered examples include a herd of wild donkeys from Ponui Island, Pitt Island sheep and Arapawa Island goats. They also breed boer goats, large black pigs, kune kune pigs and suri alpacas for sale to lifestylers and other breeders.

The couple are at the start of what is a 10-year plan to develop the park, with barns yet to be built to house an educational classroom, café and farm shop. A pond dipping area is also on the to-do list, as is an aviary for parrots and other birds. Some day there will also be more playground fun to add to the existing sandpit, which draws the children like a magnet. "We put a lot of thought into mapping out the paths and paddocks," says Vicky. "There's a dirt hill that we were going to landscape, but the children who come have so much fun digging steps and hidey holes that we've decided to keep it... for now!"

**Animal Farm is open Thurs-Mon, 10am-4pm**  
**Adults \$10; children \$5; under 2s free.**

**Closed for winter from 21 July to early September**  
**More information : [www.animalfarm.co.nz](http://www.animalfarm.co.nz)**

## EDITORIAL

Welcome to August—by now there are lambs reminding us that longer days are not too far away although it will be awhile before we can really celebrate spring.

If you are curled up on these long winter nights with not too much to do, think about all those hours you slaved away over summer and enjoy your down time.

You might like to bake a batch of Soo Gees coconut scones (page 10), or if your days need filling head along to the Mapua Creative Fire group (page 6).

Whatever you do this August, bring your gumboots inside at night—here's to staying warm and dry!.



**Heine's**  
**Cartage and Contractors**

We have trucks, excavators, a dozer, a grader, and the expertise to do all your cartage, drainage, building site & foundation, roading, and subdivision work.





40 years of local knowledge

and experience in the transport and contracting industry

Phone Wayne on 03 5432 788  
027 430 2725

Or call in at our workshop and office at  
1455 Moutere Highway  
(by the firestation)  
UPPER MOUTERE

## PLACING AN ADVERTISEMENT

Thank you for advertising in the Grapevine – you help us cover the cost of producing and delivering this free community newsletter each month.

**The deadline for each issue is 15<sup>th</sup> of the month.**

Please email your print-ready ad to [umograpevine@hotmail.com](mailto:umograpevine@hotmail.com) or provide paper-based, print-ready copy to the Upper Moutere Store.

**The following prices apply for advertising:**

- ⊙ Births, marriages, deaths and giveaway notices: Free
- ⊙ Business card size advertisement: \$12
- ⊙ 1/4 page advertisement: \$25
- ⊙ 1/2 page advertisement: \$50
- ⊙ Full page advertisement: \$95 (if space available)

Please deposit payment (and identify it with your name) to our account: NBS 03 1354 0229034 16

We warmly welcome editorial contributions to the Grapevine from all residents in the Moutere and Tasman regions. You make the newsletter an interesting read!

There is no cost to having your articles published, but if you are telling the community about a commercial or fundraising venture, we do appreciate a small donation to help us cover our costs (see above for bank details).

**The deadline for each issue is 15<sup>th</sup> of the month.**

Please email your copy to: [umograpevine@hotmail.com](mailto:umograpevine@hotmail.com)



**Richmond Office**  
203 Queen Street, Richmond  
Office: 03 544 2900  
Fax: 03 544 2909  
[sharon.dejong@summit.co.nz](mailto:sharon.dejong@summit.co.nz)  
[www.summit.co.nz](http://www.summit.co.nz)



**Sharon De Jong**  
Sales & Marketing Consultant  
  
Mobile: 0273 202 196









**Kylie Taikato**  
Sales & Marketing Consultant

**Mobile: 021 152 8195**  
**After Hours: 03 543 2623**

**Richmond Office**  
203 Queen Street, Richmond  
Office: 03 544 2900  
Fax: 03 544 2909  
kylie.taikato@summit.co.nz  
www.summit.co.nz



**SUMMIT**  
SINCE 1992

**REAL ESTATE LTD** MREINZ

LICENSED UNDER THE REAL ESTATE AGENTS ACT 2008

## MDBA Business and Residential Directory 2014

**Residents** – if you would like to appear in the Directory listings as a new listing or your details have changed please fill in this form and return it to PO Box 8, Mapua 7048

**Businesses** – only member businesses may advertise in the Directory. If you would like to enquire about membership please contact Janet at [coordinator@rcmh.co.nz](mailto:coordinator@rcmh.co.nz)

**Events** – we also list community events running November to November so please send details (time / place/ description / entry fee etc) to Jane Smith at [directory@rcmh.co.nz](mailto:directory@rcmh.co.nz)

# We can help your business grow



**PITT & MOORE**  
LAWYERS AND NOTARIES PUBLIC

Nelson 03 548 8349  
Richmond 03 543 9090  
[www.pittandmoore.co.nz](http://www.pittandmoore.co.nz)  
Louise Clark

Post to Jane Smith at PO Box 8, Mapua 7048 or email your request to [directory@rcmh.co.nz](mailto:directory@rcmh.co.nz)  
**Request for Addition/Deletion/Alteration of Listings in Mapua & Districts Community Directory**

This is an: **addition/deletion/alteration** (please circle)

\_\_\_\_\_  
Name for listing

\_\_\_\_\_  
Address for listing

\_\_\_\_\_  
Phone number for listing

I am authorised to request this addition/deletion/alteration - Yes/No

\_\_\_\_\_  
Name

\_\_\_\_\_  
Signature

\_\_\_\_\_  
Date

# MOUTERE HILLS COMMUNITY CENTRE



## A WORD FROM KATRINA

It was wonderful to have such incredible support from the community and local businesses for our recent quiz evening. What a fantastic night out with over 200 people attending. Through this generous support we managed to raise \$8300 towards the purchase of new equipment for the Community Fitness Centre. The total cost of equipment to ensure good quality and a well balanced exercise programme is \$70 000. We are working hard to raise the balance of these funds required but if any business or family would be interested in sponsoring a piece of equipment then we would be happy to advertise your support on a plaque on the equipment and also on our sponsors board inside the Fitness Centre. We have equipment priced from \$500 up to \$5000 so please contact me if you maybe interested in this.

At the quiz evening we auctioned off the first membership of the Moutere Hills Community Fitness Centre. Congratulations to Mitch who will be the first official member. We thank you so much for your support and hope you enjoy the use of this quality Fitness Centre at your back door! The Fitness Centre will officially open next month on **Saturday 13th September**. Membership details and opening weekend specials are listed on our website [www.mouterehills.org.nz](http://www.mouterehills.org.nz)

We have a lot happening at the Centre at the moment with work taking place on the Fitness Centre, the development of a landscape plan for a Community Recreation space well underway and work beginning on history panels and a history display. But we still have all our regular activities happening and some new and exciting ones starting up as well. The centre is also still available for bookings for Weddings, Meetings, Functions, Birthday parties and events so don't hesitate to contact us if you require further details.

Kind Regards **Katrina**



**Mitch, the first Fitness Centre member with Fitness Centre Co-ordinator Vanessa Mairs.**

## COMMUNITY RECREATION with Vanessa

We have a great programme of social activities on offer for you in Term 3, so why not come along and check them out!

Social indoor bowls on Monday evenings from 7.15-9pm.  
Come and join us for just \$3 a session!

Cardio tennis hits the courts on Tuesday mornings at 9am.

Zumba with Hilary on Tuesdays from 5:45—6:45pm.  
New this term - Great fun!! Cost \$7 per session



Dru Yoga on Thursdays from 9:30—11:00am

Low-impact aerobics on Friday evenings from 6—7pm.  
Working on core strength & balance. Cost \$5 per session

### SOCIAL SPORTS - all \$3 per session

Mondays 7:15pm	Indoor Bowls
Tuesdays 6:00pm	Social Touch (Gold Coin)
Tuesdays from 7:00pm	Badminton
Wednesdays 7:00pm	Table Tennis
Thursdays 7:30pm	Volleyball

### DATES FOR YOUR DAIRY

Saturday 9th August

'Rangers' Quiz Night

Saturday 13th September

Community Fitness Centre Opens



**Phone: 543 2516**

**Email: [enquiries@mouterehills.org.nz](mailto:enquiries@mouterehills.org.nz)**

**Website: [www.mouterehills.org.nz](http://www.mouterehills.org.nz)**



Members and branches throughout NZ are always busy with different projects or information gathering.

RWNZ was involved judging the Rural Bachelor contest at the National field days and several branches held Pink Ribbon events in May, raising funds and awareness of breast cancer.

Solomon Islands was the country of study this year and a lot was learnt about that country. Fund raising was done to support their local schools damaged in the floods.

RW has a campaign to raise awareness of family violence – it's OK to ask for Help. A calendar has been produced to raise funds to support dyslexia sufferers; one branch has paid for a palliative bed for use in their community. Another branch had their own Antiques road show.

Many and varied subjects have been explored - IT seems to be popular. Women and the law is another subject explored. Health is another subject studied, from diabetes, heart care, and even incontinence.

Many and varied are the interests of members of RWNZ.

To celebrate the International Year of Family Farming Rural Women New Zealand is running a competition with the Ministry for Primary Industries for you to share your family farming stories. Categories for video, photos or stories are: women and men at work on the farm, farm machinery or a farm innovation, Animals, Children and Rural Communities. Closing Date 1 Nov.

Pat Moore.



Hi I'm Hilary & I've started zumba classes at the **Moutere Hills Community Centre.** Come along & enjoy getting fit. All ages & abilities welcome. Everyone is encouraged to go at their own pace. See my website for details or just turn up at the next class. **Cost is \$7 per class**

**www.zumbahil.com**  
**Motueka | Moutere | Brightwater**

## MOUTERE MASSAGE ROOMS

**Sports, Deep Tissue, Injury Repair, Bowen Therapy, Foot Reflexology, Pregnancy Massage.**

- \* **Qualified & Professional**
- \* **Gift Vouchers**
- \* **Monthly Specials**
- \* **Affordable Rates**
- \* **Avail. Saturdays & Evenings**
- \* **Treating neck & back pain, Sciatica, Sports Injury, Pre & Post Comp. sessions.**

**Ph 03 526 7107 for an appointment.**

## Yoga.

Breathe - Be still - Surrender - Be strong

*Ashtanga Yoga is flowing and dynamic, integrating breath with movement*

Tuesdays 6 - 7.30pm (starts June 3<sup>rd</sup>)

Venue : 'The Woolshed', Lancewood Villa,  
109 Kelling Rd, Upper Moutere

BYO yoga mat and blanket, \$12

with Ange Palmer  
 0211450334 / 03 5530353  
[www.angepalmer.com](http://www.angepalmer.com)

**Ange Palmer**  
 CONTEMPORARY PLANT MEDICINE  
 SUSTAINABLE WELLBEING

## LOCAL MIDWIFE CLARE SPRATT

**Ring Clare for friendly professional maternity care and advice.**

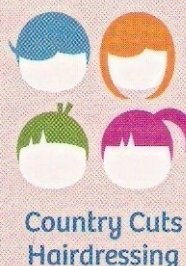


*I offer full 24 hr maternity care from conception through to 6 weeks post natal, home/hospital and water births, birthing pool available, natural remedies, free pregnancy testing, breastfeeding support and much more.*

T: 03 526 7764

M: 0273324929

E: [midwifeclarespratt@me.com](mailto:midwifeclarespratt@me.com)



**Karen**

For all hairdressing services

14 Kelling Road  
 Upper Moutere 7175  
 (03) 5432297 or 0274 728863

Phone or email for an appointment  
[k.j.rhind@xtra.co.nz](mailto:k.j.rhind@xtra.co.nz)



## HOT OFF THE PRESS!

### NEWS FROM MAPUA COMMUNITY LIBRARY

The whispers are true, the volunteers at the library are in action again planning and organising their third 3-day Literary Festival.

A few months to go but book the dates in your diaries so that you don't miss out on the fun - Friday 27, Saturday 28 and Sunday 29 March 2015.

The launch will be a quiz on Friday evening, Saturday will be all about writing workshops, songs and music, and Sunday will see the Community Hall transformed into a crime scene with four guest speakers to entertain us.

We welcome the return of Joe Bennett as patron, quizmaster, leader of the adult workshop and MC in Who Dunnit Hall!

Early enquiries are welcome.

Please contact Sue at [s1ad2as3@xtra.co.nz](mailto:s1ad2as3@xtra.co.nz) or telephone 03 540 2934.

## Sun Electrical Ltd

Electrical Services Moutere and Surrounding Districts  
03 5402367 - Tony 0273784580

Enjoy a warmer home - stop heat escaping through draughty down-lights with energy and \$\$\$ saving LED lights.

Sun Electrical, LED lighting specialist electrician

Contact us here in Mapua - 124 Aranui Rd, phone 5402367  
Check out our website - <http://www.sunelectricalmapua.com>

## FOR EXTRA SPACE AT YOUR PLACE

**CARAVAN RENTALS**  
Long term from \$60 per week

**Phone Tony**  
**027 442 5010**  
**0800 733 326**

## Moutere Fitness Spin

Spin Cycle Classes

Personalised fitness training

Tracey 021 0388 280/ Mark 0274 229 949

\$10 per session



Spin	Times
Monday	6:20am
Monday	5:30pm
Monday	7:00pm
Tuesday*	6:00am
Wednesday	5:30pm
Thursday*	6:20am

\* at Mapua Fitness Mania

## MAPUA AUTO CENTRE

'YOUR AUTOMOTIVE SPECIALIST'



Fully Equipped  
Automotive  
Workshop

All Makes  
& Models

6 Courtesy  
Cars

W.O.F.



20 WARREN PL, MAPUA  
PH 03 540 2180  
[mapuaauto@mapua.biz](mailto:mapuaauto@mapua.biz)  
[www.mapua.biz/mapuaauto](http://www.mapua.biz/mapuaauto)



MAPUA  
AND DISTRICTS  
BUSINESS  
ASSOCIATION



**Bulk Liquid Waste Transport**  
**Submersible Pumps**  
**Farm Ponds**  
**Septic Tanks**  
**Winery Waste**  
**Grease Traps**

03 546 7632  
or Freephone  
0800 235 874  
(0800 2 FLUSH)

**ASTRO**  
ENVIRONMENTAL LTD

info@astroenvironmental.com www.astroenvironmental.com

Property  
Powers of Attorney  
Subdivision  
Business  
Trusts  
Relationship Property  
Wills & Estates



Rachel Rumball  
solicitor



Emma Marshall  
solicitor



Ron Thomson  
solicitor

**smythes LAWYERS**

300 Trafalgar St, Nelson  
Tel 03 546 8750  
[enquiries@smytheslaw.co.nz](mailto:enquiries@smytheslaw.co.nz)  
[www.smytheslaw.co.nz](http://www.smytheslaw.co.nz)



03/08/2014





## MAPUA CREATIVE FIBRE

Have you wondered what we do? We have fun sharing ideas and learning new things. Some of you may have heard of us with our previous name of Mapua Woolgatherers.

This has been changed as we do not work only with wool. We are a group of very keen people working with fibre in one form or another; wool, silk, alpaca, and other natural or manufactured fibres. These fibres can be knitted, crocheted, spun, woven, felted, or used in a variety of other ways.

Some people may sell work and many of us create things for the family or to give away. The group meets monthly on the 2<sup>nd</sup> Tuesday at the Mapua Community Hall from 10am to 1pm. Any one is welcome to join us.

### Open Day at the Mapua Hills Community Church

This year we are having an Open Day, focusing on education and helping people learn more about the Creative fibre group here and Nation-wide.

Keep Wednesday 20<sup>th</sup> August free and come and see what our members do and have produced. 10.00 to 3.30 Morning and afternoon tea will be provided.

There will be some mini workshops during the morning. You can 'have a go' at different activities. We think you will be inspired to try something new! There will be displays of members creations, you'll be amazed at what clever things people can do.

Sue Giller the National Creative Fibre Education Officer will be there to explain to interested people what courses and activities are available to learners new to the craft, as well as experienced fibre workers.

# DOROTHEA TEBBENHOFF

HEILPRAKTIKERIN  
LICENSED ACUPUNCTURIST

25 GREENWOOD ST  
MOTUEKA

[WWW.TASMANACUPUNCTURE.CO.NZ](http://WWW.TASMANACUPUNCTURE.CO.NZ)

03 528 6239

MINZRA, ACC PROVIDER

*Acupuncture*  
*Chinese Herbal Medicine*



Chí

Sue is a clever, humorous and inspirational speaker and will tell us one of her woolly tales after lunch.

We invite everyone to come and see what we do. You are welcome to bring your lunch and spend the day enjoying the displays and each others company.

There will be a \$2.00 charge for non Creative Fibre members, there will also be a raffle.

#### Contacts:

Shirley Wallace [s-wallace@vodafone.net.nz](mailto:s-wallace@vodafone.net.nz)

Madeline Rogers [madeline.rogers@xtra.co.nz](mailto:madeline.rogers@xtra.co.nz)



## Swim @ Mapua Chalets

From just \$15 per hour enjoy private use of our **heated indoor pool**. 30 degrees + even if it's freezing outside! Perfect for some private exercise, a family swim, or a children's party.

Did you know our indoor and outdoor pools are now open to the community throughout the year?



**Book your private pool experience instantly on our website at [www.activekidzswimschool.co.nz](http://www.activekidzswimschool.co.nz) or call 03 540 3310**



## Highly Strung Restrings

- TENNIS RESTRINGS
- SQUASH RESTRINGS
- OVERGRIPS
- STRINGS
- 15yrs EXPERIENCE
- QUALITY SERVICE

**Eileen Wilson**  
 Redwood Valley Lane  
 Ph: 03 544 1099  
 Mob: 021 119 7642  
 Email: eileen@li.co.nz



Early Childhood Education &amp; Care



Hi I am Lindsay and have been at Country Kids for over 4 yrs working in J4K 3days each week.

When I am not enjoying life there I am helping with our business

**VEGETATION SERVICES** an agricultural spraying / contracting business serving a large area. Some of you farmers will know Pete. We live out of town north, on a few acres with huge stock of 3 sheep 2 chickens and of course Meg 6mnths, who wants to be with them all.



Our current interests, children have been focussed on range from dance, music /Frozen as well as a project on The Gruffalo. With regular cooking on offer, children baked individual dishes of Gruffalo Crumble with dates, choc drops, apple, apricots for all the knobbly bits and pieces he has.

Children have completed their own drawings on display in our room.

Here is our enchanted forest incorporating art, cutting, gluing skills and rich imaginary play using our natural

materials along with our

architectural set.



**andrew Eggers**  
builders limited

Call Andrew on  
**027 4460 739**

Specialists in renovation work  
[www.andreweggersbuilders.co.nz](http://www.andreweggersbuilders.co.nz)

e: [eggersbuild@ts.co.nz](mailto:eggersbuild@ts.co.nz)  
 m: 027 446 0739  
 t: 03 543 2757  
 f: 03 543 2823

76 martin road  
rd2 upper moutere  
nelson 7175

**mb** Member

LICENSED BUILDING PRACTITIONER  
www.dba.govt.nz  
BUILDING CONFIDENCE

## Martin's MILLING

*Simply A Cut Above*

**Martin Douglass**  
 P: 03 543 2322  
 1969 Moutere Highway, RD 2, Upper Moutere 7175.  
[martin@martinsmilling.co.nz](mailto:martin@martinsmilling.co.nz)

[www.martinsmilling.co.nz](http://www.martinsmilling.co.nz)

Mobile band saw milling.  
 using Woodmizer thin kerf technology.  
 Hydraulic handling for logs up to 6m long & 800mm diameter.  
 Large timber & flitches resawn.  
 Poles squared.  
 Registered to cut native.

## Wood-Mizer

Using Woodmizer thin kerf technology.  
 Mobile Band Saw Milling  
**Low Waste • Accurate • Economical**





## News from your Preschool in the Moutere

Kia ora koutou,

Wow is time moving super fast or are we just all having so much fun learning that it just seems that way?!!! When I reflect back on all the enriched learning that has been provided by our excursions out into our local community over the last couple of months I can't help but think of the proverb about how it takes a village to raise a child. So a huge thankyou goes out to the Upper Moutere fire brigade who by sharing their knowledge of all things related to fire helped stimulate some very impressive firefighting scenarios at Harakeke!

It was a delight to see children revisit their learning, and through co-operation and teamwork demonstrate terrific problem solving skills. A Sunday visit from Lee Corlett gave parents the opportunity to try out with their children some of the fun physical challenges which all assist children's learning across a broad spectrum of areas. Our children have been looking forward to Lees' fortnightly sessions and we see the benefits reflected in children's play as they show more confidence in exploring our environment. Thanks Lee, you are a true taonga within the top of the south!

Another much appreciated visitor was local builder Daniel Whitten who just happened to be working on Gundula's garage installing a window. Luckily for three young building enthusiasts who had been drawing up house plans, Daniel just happened to need some young apprentices to help make some flashing for his window project. What a fantastic experience for these boys.

So the year seems to speed on and now the season for planting trees and garlic is almost over. With our Matariki festivities behind us it is perhaps fitting that this celebration of the Maori new year is a time to contemplate new beginnings especially for some of our five year olds. As part of supporting their transition to school we went to visit Mrs Dodunski's piwakawaka junior class at Mahana School just before the school holidays. What a wonderful experience to see how the threads between early childhood and junior classes intertwine to provide our tamariki with an optimum learning journey.

One of our children asked to have a wheels day and Mahana School provided an awesome venue for this wee trip during the school holidays. Thanks to Justin and Mrs D our children not only enjoyed riding their assorted wheels around the school but gave the playground an extensive and thorough going over as they explored it to the limits of their comfort zones.

In between these excursions there is still time to enjoy the elements that nature provides us with... what is it about children's comfort zones that despite snow on every surrounding mountain peak allows children to want to wade through puddles and play around in our kayaks with huge smiles of delight spread wide across their faces???AHHH to be a kid in the Moutere!!!

*Ka kite ano, your Harakeke teaching team.*

### **KIDZ KLUB AFTER 3**

#### **OSCAR ACTIVITY PROGRAMMES**

**'WHERE KIDS HAVE FUN'**



We provide CYF approved quality OSCAR after school and school holiday programmes in Mapua and an after school programme in Upper Moutere.

For more information contact Cindus

03 543 2033 / 027 358 7233

[Kidzklubafter3@gmail.com](mailto:Kidzklubafter3@gmail.com)

**CHECK OUT OUR FACEBOOK PAGE TO SEE WHAT THE KIDS HAVE BEEN UP TO LATELY!!**



Fast Turn Around • 24 Hour Fuel • Tyres & Batteries  
Full Automotive Repairs & Servicing • Trailer Hire  
Wheel Alignments • Loan Cars Available  
Tractor & Farm Machinery Repairs • WOF Inspections

**southfuels**

**Ph 543 2707**

**Main Road, Upper Moutere**



**Grapevine circulation is 1300 copies.** This issue has been constructed by volunteers: Tanya Doty, Beverley Sellers, Sharon Beuke, Avril Stephens, Hilary Williams and Heather Eggers. Views expressed are not necessarily those of the voluntary editors and no responsibility is taken!



## Hello Animal Lovers

There is no doubt that dogs are at their happiest when working in partnership with their owners.

To see a gundog retrieve game or a sheepdog round up sheep is a wonderful sight, as well as being of real practical help. One of the most inspirational is to see a guide dog making decisions for their sight impaired owners. These dogs literally give independence to their owners who put their complete trust in their special dog. Guide dogs have been trained to guide their owners around obstacles in all conditions and environments in a calm and confident way. There are other dogs that alert their owners by alerting them to sounds such as the telephone or a knock on the door.

Most of us have seen the detection dogs at the airport. Some are trained to find illegal substances and others to detect food, their powers of smell are many times greater than humans which is illustrated by the extraordinary dogs that can detect people buried under snow or under rubble many feet down which are certainly examples of the sensitivity of a dog's nose.

These are only a few of the important jobs that dogs can do with their amazing abilities and it illustrates how important it is for every dog to have a purpose. No matter what breed or how big or small all dogs must have an opportunity to do a job. There are dog agility clubs which are a great way for dogs and owners to have fun if they don't have an official job.

If dog owners can partner with their dog it will be much happier, healthier and fulfilled as a result.

I am always happy to answer any animal behaviour questions.

Susan Mott  
Animal Behaviourist

039700952



### Light engineering / joinery workshop

Located between upper and lower Moutrere offering:

- Full machining service in both wood and metal
- Welding including stainless steel and aluminium
- Foundry casting of aluminium, brass, bronze
- Wrought iron work
- Fabrication

Repairs and restoration work carried out in both wood and metal

Laminated and solid kitchen bench tops, cabinets and doors

Further details contact Chris

Tel: 03 526 7008

Mob: 021 022 909 20

## Horse Cover & Gear Repairs

+ Horse Cover Washing

+ Prompt Service

+ Good Rates

**Contact Lawrie**

**1350 Moutrere Highway**

**PH 5432 234**



**Jeanette A, Garrett B.H.S.I., Ad. Dip. Ed.**  
**Registered Equestrian Sports NZ Performance**  
**Coach & Coach Educator**  
**www.clickwithhorses.co**  
**ph: 03 528 7123**





**COMFORT FOOD** (something to help you through)

### COCONUT SCONES

*Preheat oven to 200C—less if fan bake.*

1 1/2 cups (225g) self raising flour, 1 teaspoon baking powder, 2 tablespoons sugar, 50g softened butter, 1/3 cup coconut, 50ml coconut cream and 50ml milk, 1 egg.

Sift flour and baking powder into a bowl with a pinch of salt. Stir in sugar and rub in butter with your finger tips.

Combine coconut milk, milk and egg then add to dry ingredients, stirring with a knife, bringing it all together into a ball.

Pat out to approximately 4cm thick on a well floured board. Cut into squares, or make them special by using a round cutter.

Place on a baking tray and brush with a little milk, bake 10-12 minutes.

Cool a little before splitting then serve with a local berry jam and cream, Or—

Beat 100g mascarpone cream with 1 1/2 teaspoons sugar (or 2 tablespoons of honey) until soft peaks form. In a separate bowl beat 150ml coconut cream and 150ml cream until they form soft peaks, then combine with the mascarpone.



**Goulter's Vinegar**  
organic cider

Producers of Organic & Natural Vinegars

**Charlie & Trish Goulter**

Ph: 03 540 2474      122 Tahunanui Drive,  
Cell: 027 846 3111      Nelson  
products@vinegarpower.co.nz      www.vinegarpower.co.nz

## MOUTERE INN



THE CENTRE OF THE MOUTERE SINCE 1850

- Craft Beer
- Local wines
- Bar meals
- Lounge bar
- Real Ale
- Live music
- Evening Dining
- Rooms

EST<sup>D</sup> 1850

*All welcome*

Available for functions and private bookings

### COMING EVENTS AT THE MOUTERE INN.

❖ **SATURDAY 2<sup>nd</sup> AUGUST – LIVE MUSIC 8pm “LUKE HURLEY”**

Luke Hurley is one of New Zealand's great unknown musicians, playing and recording original music since the early 80's. "If Bob Dylan could play the guitar and sing he would be Luke Hurley" CHCH Star.

❖ **FINE DINING EVENING SAT 30<sup>th</sup> August 7pm \$45**

We will be offering a relaxing evening, of fine dining over five courses. Focusing on produce from the Moutere Artisans we will also be matching local wine and beer with each course. Bookings essential, check our website for menu details.

❖ **DON'T FORGET**

Raffle every Wed 6pm with Chase the Ace, and Steak Wednesday  
1<sup>st</sup> Thurs Folk Night. This month on the 7th  
2<sup>nd</sup> Thurs Quiz Night. This month on the 14th  
Last Thurs Ribs Night \$20. This month on the 28th

**THE MOUTERE INN**  
THE CENTRE OF THE MOUTERE

**Phone 543 2759**  
[www.moutereinn.co.nz](http://www.moutereinn.co.nz)

The littlies are back at school—try these on them...

### CRUNCHIE BAR SHORTBREAD BUSCUITS

*Set oven to 175C, prepare two lined baking trays.*

250g softened butter, 1 cup icing sugar, 1 teaspoon vanilla essence, pinch of salt, 1 1/2 cups flour, 3 tablespoon corn flour, 2 tablespoon rice flour (or plain flour), 70g ground almonds, 2x 50g crunchie bars.

Put the crunchie bars into a plastic bag and crush roughly with a rolling pin—put aside.

Beat butter, icing sugar and vanilla essence together until creamy. Add remaining ingredients and mix until a dough forms. Place in the fridge for 30 minutes then form into balls and flatten lightly with a fork. Place on the lined trays 3cm apart and bake 12 minutes until lightly golden.

Leave on tray to firm up then transfer to a rack to cook completely.

Store in a airtight jar.



## GARDENING

Hopefully it's not too wet to potter around, but don't get too enthusiastic if the ground's wet, you'll just make it worse—it might be best to plan and dream, but on a good day there's always a couple of things you can get done. Here's a few suggestions:

Detach runners from strawberry plants and increase your strawberry plot!

Buy some seed potatoes and put them in a well dry well lit spot to sprout, plant at the end of the month or when the sprouts are 3-4cm long.

If you haven't already done so, finish pruning roses & deciduous trees. Plant the fruit trees, deciduous trees and roses you were going to plant last month. Apply a dressing of rose food to established rose plants. Water in well.

At bud burst spray Peaches, Nectarines, and Plums with Copper to avoid leaf curl and Bladder Plum.

### WOMAN GARDENER

**Very experienced**

**Maintenance, makeovers or restoration**

**Fiona Ph: 03.528.7653**



**NEUDORF**  
VINEYARDS

**We are looking for some special people for our cellar door.**

They need to be personable, enjoy meeting people and have a strong local knowledge.

And an interest in wine.

**Starts September 1st until April 30th.**

We offer a great working environment and the opportunity to learn more about fine wine.

Send details to [ken@neudorf.co.nz](mailto:ken@neudorf.co.nz)

# Moutere HILLS

## VINEYARD



**Café open Thursday to Sunday. Delicious winter menu prepared by in-house chef John McFeat.**

**Breakfast menu available in weekends from 10.00am**

**Full menu available Friday evenings in the Fox-n-Grapes wine bar.**

**Bookings recommended.**

**42 Eggers Road, 2km from the Upper Moutere Village.**

**Ph 03 543 2288**

**[www.mouterehills.co.nz](http://www.mouterehills.co.nz)**





- Excavating (2,6,12,20 ton)
- Gravel/rock supply
- Driveway construction and maintenance
- Agricultural contracting

**Phone Barry: 021 533 118 or 5433771**

**John: 021 532 089.**

*As we are often out of range, please leave a message and we will get back to you.*

*\*Talk to us soon about planning your next seasons baling requirements \**

## LEIGH BRIARS ARCHITECTURE

03 543 2667

021 215 0946

briars@ts.co.nz

RD 2 Upper Moutere

Nelson 7175



## Endurance spraying

**All types of weed spraying  
Gorse and Brushweed  
Control**

**Commercial • Residential  
Forestry Road Spraying  
Moss treatment for lawns,  
concrete areas and decks.**



**Contact Pete Hughes  
021-194 2654 A/H 03 544 2654  
Growsafe certified •  
Approved Handler**

## PAYLESS ELECTRICAL SERVICES

professional service guaranteed



FREE CALL

**0800 772 794**

MOBILE

**021 277 2794**

*Free Quotes*

*No Job too Small*

w: paylesselectricalservices.co.nz e: paylesselectricalservices@gmail.com

### DOMESTIC

- New build homes and renovations
- Rewiring, switchboard upgrades
- Lighting, power points, heating
- Home entertainment installations
- LED lighting specialist
- Electrical Safety Checks

### COMMERCIAL

- Building maintenance and fault finding
- Complete fit out of new shops, offices, showrooms and warehouses
- Lighting and power design
- Data wiring
- Electrical Safety Checks



## Services Provided:

- |                         |                              |
|-------------------------|------------------------------|
| Lawn Mowing Residential | Wood Splitting               |
| Lifestyle Blocks        | Green Waste Removal          |
| Concrete Crack Repairs  | Fencing                      |
| Hedge Trimming          | Leaf & Weed Removal          |
| Tree Pruning            | Stone, Bark, Sand Deliveries |
| Contract Mowing         | Water Blasting               |
| Property Maintenance    | Laser Levelling              |
| Digger Work             | Spraying                     |



**Water Features  
Paving  
Rock Work  
Irrigation**

**General Landscaping**

**Michael Hardy**

**Ph: 021 443 908**

**A/H: 03 543 2555**



**Tasman Bay Contracting Ltd**

Property Maintenance Specialists

M: 027 513 5588

A: 119 College Street, Motueka

E: tasmanbaycontracting@gmail.com

W: www.tasmanbaycontracting.co.nz

**Peter Collins**  
DIRECTOR



The Playhouse Mapua was the ideal setting for the Tasman Players first production, The Irish Whiskey Murders. You never know quite what to expect from amateur productions, having been to more than my share of them, I was delighted to find that the local cast and their writer/producer Sarama Waterman turned a cold rainy night into a gloriously hilarious distraction.

The mischievous young ghosts Scally and Bally played by Finlay Langelaan and Molly Inman showed an acting ability beyond their years and experience. From the minute they stepped onto the stage they captured the audience with their Irish humour and their use of the stage was impressive – jumping onto the table to make a point seemed the natural thing to do.

Cross dressing Paddy McFadden and his conniving wife Scarlet were the perfect gold digging duo and seemed to be the obvious perpetrators of the eventual murder of Paddy's mother played by Dovedale's talented Sue Mott. Was it the fervent gay priest Father Magnus who did it? Or perhaps the outsider – pretty, young Nurse Kelly?

We were kept entertained during the interval - the audience having the option to fill out whodunit sheets, with a bottle of fine wine awarded to the correct guess at the end of the night.

Father and son Seamus and Sean O'Riley (Laurence Murphy and Nigel Coker) were looking pretty culpable at one stage. Laurence led the wake scene with a rendition of Danny boy which had the crowd singing along. The accompanying band was made up of several local players and provided some rousing tunes helping to set the scene, adding another layer to the atmosphere. Rivalry between the McFadden and O'Riley families led to some humorous interjections from the audience which was positively encouraged by the actors, making for a relaxed and spontaneous audience.

Humorous and bumbling, Dic 1, Dic 2 and Dic3 came into their own in the second part of the play and things started falling into place, with confessions made and explanations given.

The complex melodramatic plot was lengthy and took several twists and turns. The Irish accents and the one liners came thick and fast, meaning it was tricky for the audience to keep up with the play at times, but this is usual in all sorts of theatre and the well put together costumes and effective lighting helped take the amateur production a step up the ladder.

I look forward to the Tasman Coastal Players next show, Upton Abbey, billed as "A jolly Murder Christmas Special" - something to ease us into the Christmas spirit perhaps? *Tanya Doty*

## TONY HAHN DECORATORS

For all your Decorating Requirements:

Painting, Wallpapering, Water blasting,

Spray painting and more....

25+ Years Experience

0800 REDECORATE

0800 733 326

Cell 027 442 5010

PO Box 48, Upper Moutere

[hahn@clear.net.nz](mailto:hahn@clear.net.nz)



## DEBBIE WATSON

Licensed Real Estate Salesperson (REAA 2008)

Phone 03 544 5488 / 021 462 629

**Great Service - Great Rates - Great Results**

Your best interest is my priority,  
sell with me and I'll make sure the process is  
something more than you would expect.

\$500 base fee, commission starting from 2.95% on the first \$400,000 and 1.95% thereafter + GST







PO Box 37, Upper Moutere 7144  
 Phone: 5432 516  
 Email: [enquiries@mouterehills.org.nz](mailto:enquiries@mouterehills.org.nz)  
 Web: [www.mouterehills.org.nz](http://www.mouterehills.org.nz)

## THANK YOU TO THE FOLLOWING BUSINESSES FOR YOUR SUPPORT OF Moutere Hills Community Centre Quiz Evening

Peckham's Cider  
 Neudorf Vineyard  
 Barkers of Geraldine  
 Petite Fleur  
 Woollaston Estates Ltd  
 John Erni Building  
 Village Milk  
 Upper Moutere Tennis Club  
 Townshend Brewery  
 Seifried Estate Winery  
 Neudorf Diary  
 Proper Crisps Ltd  
 Neudorf Olives  
 Moutere Honey  
 Pegleg Woodwork  
 Miles of Food  
 Neudorf Mushrooms  
 Jill Cooper-Francois Yoga  
 Zumba Fitness  
 Mahana Guitar School  
 On the Spot Diary, Upper Moutere  
 Summit Real Estate Richmond  
 NBS Richmond  
 Pitt and Moore  
 Tasman Rugby Union  
 Fruit Fed Supplies  
 The Apple Shed

IMB Construction  
 Mapua Plumbing  
 Whitwells Motueka  
 Debbie Watson – Heyward  
 Realty  
 Redwood Cider Co.  
 Crowe Horwath  
 NBS Richmond  
 Bay Pharmacy  
 Laser Electrical Motueka  
 Programmed Property  
 Maintenance  
 Amcal Pharmacy Motueka  
 Founders Brewery  
 New World Motueka  
 Abel Glass Motueka  
 Pro Rugby  
 Slightly Different Ltd  
 Richmond Auto Court  
 Telecom Business Hub  
 Office Products Depot.  
 Super Liquor Richmond  
 Unichem Pharmacy Motueka  
 Allergy Solutions  
 FMG  
 ASB Richmond

**Please support the above businesses who support our community!**

*This Quiz Evening was an extremely successful fundraiser with over 200 people attending and enjoying a great night out! Due to the support of the above business and all who attended or volunteered on the evening we were able to raise \$8,380 towards the purchase of equipment to fit out the new Fitness Centre.*

*Thank you all!*

*From Katrina, Vanessa, Scott and  
 the Board of Moutere Hills Community Centre.*



*It was a full house for the Quiz Evening!*

## MOUTERE COMMUNITY YOUTH TRUST

Te Puawai Tanga O Rangatahi



### Moutere Community Youth Happenings

Paintball was awesome! Hope that you all had a great time, and that the rest of your holidays was packed with fun, good times, & snoozing.

### Friday Night Youth (Year 7-13)

Friday 1 August	Action Centre
Friday 8 August	Pinch & a Punch
Friday 15 August	Midwinter Feast – Dress up Glam
Friday 22 August	Movie Night
Friday 29 August	Sausage Sizzle & Wide Games

**Hey Parents!** Massive thanks go out to those who have been helping out with transport.

If any parents are able to help out once a term with dropping young people home after Friday Night Youth, or helping out with transport for 'going out' events, please flick us a text or give us a call.

### Skate Park

The skate park is progressing along. We're looking to have more ply down on the new half pipe and spine soon. A big thanks to The Lion Foundation, Place Makers, Upper Moutere School, and those anonymous awesome local people who have generously donated money to see this project develop!

Community Youth Workers Andy & Abbey Bensemann

Andy	021 2245178
Abbey	027 2434364
Home	543 2949

## Looking for a new car?

**Call in and see the good guys at  
Richmond Auto Court**



Chris Jones and Lawrie Wilson are now working together again to provide the very best of service to the motoring public of Tasman. Both are well known to Nelsonians after working together for over 12 years at a Nelson franchise. "If we haven't got the car you want, we will try and find it for you. We have fresh stock arriving on a regular basis."

**316 Queen St, Richmond**  
**Richmond Auto Court Ph 544 5657**

*"Where customers become friends"*



**HIGH PLACES**  
[www.highplaces.co.nz](http://www.highplaces.co.nz)



*On the Manaslu Circuit, Nepal*

Contact us for more info!

**also Iceland - Greenland - Bhutan  
Sikkim - Patagonia - Peru - Africa**

**Tel 03 540 3208 [treks@highplaces.co.nz](mailto:treks@highplaces.co.nz)**

**PGG Wrightson Real Estate**

Real Estate Agent REAA2008

## Rural/Lifestyle Properties

Are you contemplating Selling?

Have you thought about using a specialist  
rural company?

Our database consists of many large farming  
clients wanting to downsize to smaller grazing  
units and lifestyle blocks.

Contact Doug to see how we can help and  
provide a competitive package.

**Doug Smith**  
Rural/Lifestyle Consultant  
M 027 543 2280  
H 03 543 2280  
[douglasjcsmith@pggwrightson.co.nz](mailto:douglasjcsmith@pggwrightson.co.nz)



*Living and Working Locally*

[www.pggwre.co.nz](http://www.pggwre.co.nz)

Helping grow the country

Price negotiated. Free Valuation. Free Estate Agent. All in 2008





*An excerpt from the **Upper Moutere Schools 125th Jubilee Commemorative Booklet** published in 1982.*

*The Jubilee was held over three days—8th, 9th and 10th January 1982. The committee provided a full programme for those attending.*

*A wine and cheese evening started the celebration, the school was open for inspection the following day and a official opening including roll call, photos and afternoon tea were organised by the committee.*

*Saturday night saw many enjoying the cabaret at the public hall and a church service was held on Sunday at the school.*

*The booklet tells of the schools' beginnings in 1856 when the first school committee was appointed, and has many interesting points of local history which we will include in the next few months, we hope you enjoy finding out a bit more about local living in times past...*

## THE ESTABLISHMENT OF OUR COMMUNITY

The name Moutere, which means island in Maori, was used to describe the valley when it was one continuous swamp growing flax and rushes, with a large area of bush, mainly beech, white pine and rimu, stretching down to the present Jubilee Bridge. The undergrowth and supplejack were so dense it was impossible to see more than a few metres ahead and it would take almost an hour to walk a kilometre. The hills were clay with only a thin layer of topsoil and were barren and stony, growing native grasses, manuka and fern. The Moutere River meandered sluggishly down the valley and floods, which were frequent in those days would extend water from one side of the valley to the other.

When the berries were ripe and cold weather drove the birds from the ranges, the bush was visited many thousands of kakas, pigeons and parakeets. This was harvest time, looked forward to by the Maori who came up from Motueka, erected temporary whares for shelter and snared as many birds as possible, preserving them in bark containers. When the birds became scarcer the season was over, the Maori who was always a conservationist, would pack up and return home.

The European settlement of the Moutere was begun by the New Zealand Company which had been formed in England. Colonel William Wakefield signed a treaty with the Maoris at Cloudy Bay on 8th November 1839, purchasing the northern part of the South Island from them. This the Company sold to intending settlers using the proceeds of the land sales to transport the working classes recruited from all over Great Britain. The first settlers and immigrants arrived at Nelson on 1st February 1842, having been preceded by Company men and surveyors. However, many of the land owners remained in England and most of the immigrants, who had been guaranteed work for two years, found themselves solely dependent on the Company which soon encountered financial difficulties.

Distribution of suburban land was made in the latter half of 1842. The selectors preferred the heavily timbered land of the Moutere to the fern land of Motueka and the Waimeas, but Upper Moutere itself had few good sections.

Mr W.A. Weightman, the first land-holding settler moved to Upper Moutere early in 1843, bringing a married couple with him. His 20 hectare (50 acre) section was bounded by Supplejack Valley Road and the Main Road and is now occupied by the school, the village and Mr John Heines farm. He built a hut at the foot of the hill below the Moutere Motors section\* and later a fine two storied home very close to the house presently owned by Mr and Mrs J.C.Heine. It had clay walls 60cm thick on the ground floor and upstairs, above the wide veranda, dormer windows sat out from the shingled roof.

His neighbour, Mr Dickenson, had land cleared and a hut built early in 1843 although he continued to live in Nelson for a short time. The Hewetson family were also early arrivals and they established a pig farm on two acres of land purchased from a Mr Cullen who had drawn a section. Mr Hewetson built a log hut thatched with toi toi in which the family lived for twelve years. It was divided into two rooms, the kitchen had a clay floor and the bedroom one of logs.

*To be continued...*

## TASMAN COASTAL PLAYERS

Newly formed theatre group based in the Mapua area welcomes new members. You may prefer acting opportunities or helping out behind the scenes. A great opportunity to meet new friends with shows, nights out, etc. Tasman Coastal Players welcomes interested people.

Contact Ella Evans, Secretary on 540 2212

**The Social Group** meets at the Sunday School Hall (Upper Mouere Lutheran Church) on **Thursday afternoons at 1.30pm each fortnight.**

Join in games and cards. Enjoy our afternoon of fun and fellowship. All welcome.

Contact Brian or Lois Eggers ph 5432 871.

**Barley Straw for sale. \$8 a bale**  
– phone Philip 021 372 282

## Shanti Massage Therapy and Myofascial Release

Kim Saunders Stevenson, CMT

Old Coach Road, Mahana  
540-3911  
shantimassage@hotmail.com  
www.shantimassage.weebly.com

Tuesday-Saturday



**Hon Damien O'CONNOR**  
MP for West Coast/Tasman

0800 DAMIEN (0800 326 436)

Facebook: damienoconnormp  
damien.o'connor@parliament.govt.nz



**Labour**

Authorised by Damien O'Connor MP, Parliament Buildings, Wellington

**7th SENSE**  
RECORDING STUDIO \* GUITAR TUITION \* PHOTOGRAPHY

## Recording Studio In Upper Mouere

Very friendly and non-intimidating. I can record your song ideas - even help you write them - and play the instruments for you if needed.

Also: Radio Spots, Jingles, Eulogies, Backing Tracks, Albums, Mastering, Guitar Tuition.

**Industry-standard production quality, and very affordable.**

Phone Rick: 5432 329 Email: rick@7thsense.co.nz

**www.studio.7thsense.co.nz**

Don't die with the music still inside you.



## Sun Electrical Ltd

Electrical Services for Mouere and Surrounding Districts

03 5402367 - Tony 0273784580

Caravan Electrical WoFs - (\$55.00 incl gst at our base)

Check out our website - <http://www.sunelectricalmapua.com>

## CUSHLA'S VILLAGE FABRICS MAPUA

Now open.  
Winter hours vary.  
Please ring store

Cushla's offers a wide range of exciting quilting and patchwork classes, fabrics, kitsets and patterns. Everything you require to meet your quilt addiction.

136 Aranui Road, Mapua  
[www.cushlasvillagefabrics.co.nz](http://www.cushlasvillagefabrics.co.nz)  
03 5402011