

FREE DELIVERY - DONATION APPRECIATED!



# The Grapevine

MOUTERE HILLS COMMUNITY NEWS

**MAY**  
**2014**

## ABC OF RURAL LIFE



### LOCAL LIVES

**Local author Cliff Fell has written an alphabet poem of love, marriage and life on a farm**

While the setting of the poem is distinctly local, its influences include the 19th century English poet John Clare, whose early works celebrated the rhythms of seasonal change.

The Good Husbandman's Alphabet is not a romantic yearning for the way things were, however. It registers modern-day experiences such as shopping and driving home over the hills late at night, which will be familiar to all who live in the Moutere.

Finding the right illustrator for a poem is never easy. "Perhaps because of this I wasn't exactly proactive in looking for someone to work with," says Cliff. "I had a sense of what I wanted and thought that sooner or later the right person would come along."

He emailed a copy of the poem to artist Fiona Johnstone, a long-time friend who lives on Wills Road. A couple of months later she phoned to say she'd come up with some ideas, having worked on combining simple 'atmospheric' images suggestive of landscapes with recognisable photographs of rural places. Fiona drew on her husband Ivan Rogers' black and white photos taken around New Zealand in the 1980s and her own colour photos taken locally over the last 10 years.

"I was apprehensive about showing Cliff the digital images, knowing he had imagined drawings. I wondered if he might think I had been lazy. But the truth was that I was dissatisfied with what drawings would bring to the text."

She needn't have worried. "I could see right away that Fiona had achieved exactly what you want of illustrations to a poem, which is to add new layers or dimensions," says Cliff. "Now I can't imagine the poem without them, they're so much a part of it."

After so many years in the making, The Good Husbandman's Alphabet was finally published this March by Last Leaf Press with the support of NMIT. At the launch party, Cliff, Pamela and Fiona joined with Tanya Nock to present a 25-minute performance of the poem in NMIT's G-Space Gallery in Nelson.

It has taken Cliff Fell 12 years to produce The Good Husbandman's Alphabet. He began the poem in the last weekend of his studies on the MA in Creative Writing programme at Victoria University in Wellington, during which he wrote an award-winning poetry collection called The Adulterer's Bible.

The new poem takes the form of an alphabet, with each of the 26 letters described in a six-line verse. It is also an 'acrostic' poem, spelling out a coded message in the first letters of each line.

Cliff blames its long conception on modern technology. "The poem is indeed the missing piece to The Adulterer's Bible. A snatch of the acrostic was used in the blurb for that book, but the poem itself, still unfinished, got lost on the hard-drive of an old computer that crashed."

By a stroke of luck, in 2009, he came across a manuscript copy stashed away in a file and was able to finish it in a few hours of intense writing. Over the next two years, he shared the poem with writer friends, who were enthusiastic and suggested it might be published as a stand-alone illustrated work.

The resulting book is an ABC of love, marriage and husbandry, based on an imaginary tryst on an imaginary farm. Any coincidence between this landscape and the 40 acres Cliff shares with his partner, farmer Pamela Coleman, in Rosedale Road, may be just that. A coincidence.

Fell offers a sensitive and sensual reading of familiar rural domesticity. Playful, honest and mystical, it tells a tale of female fidelity experienced through the seasons and the farm animals.

The launch was generously supported by local artisan winemakers Andrew Sutherland & Joanne Costar of Harakeke Farm.

## EDITORIAL

After a very wet and wild Easter weekend it would be nice to think that we will be having a gentler end to Autumn this month, although I can't find any long range forecast that will confirm or deny.....

No matter how much rain we do or don't have, a quality water supply (or lack of it) has been unresolved issue for many years here in the Moutere. If you didn't get a chance to attend the recent Moutere Hills Residents Association meeting that addressed the very topical water situation, you will find a summary of the meeting on pages 8 and 9. It's reassuring to get the feeling that finally we might get some action.

Very heartening to read the final total from the Sarau Festival on page 3—you will probably have to check to see if you read it right! Who knew our small community could raise such a large sum? And it all goes back into our community too. Thank you to the Sarau Committee for all their efforts and for the money put aside for the Grapevine, should it be needed. The Overtheroad team who organised and sold the Made in the Moutere calendars have managed to donate a tidy sum to the Moutere Hills Community Centre as well—once again a great example of small towns doing big things.

Here's hoping we're on a roll!



# Heine's

**Cartage and Contractors**

We have trucks, excavators, a dozer, a grader, and the expertise to do all your cartage, drainage, building site & foundation, roading, and subdivision work.





40 years of local knowledge

and experience in the transport and contracting industry

**Phone Wayne on 03 5432 788**

**027 430 2725**

**Or call in at our workshop and office at**

**1455 Moutere Highway**

**(by the firestation)**

**UPPER MOUTERE**

## PLACING AN ADVERTISEMENT

Thank you for advertising in the Grapevine – you help us cover the cost of producing and delivering this free community newsletter each month.

**The deadline for each issue is 15<sup>th</sup> of the month.**

Please email your print-ready ad to [umograpevine@hotmail.com](mailto:umograpevine@hotmail.com) or provide paper-based, print-ready copy to the Upper Moutere Store.

**The following prices apply for advertising:**

- ⊙ Births, marriages, deaths and giveaway notices: Free
- ⊙ Business card size advertisement: \$12
- ⊙ 1/4 page advertisement: \$25
- ⊙ 1/2 page advertisement: \$50
- ⊙ Full page advertisement: \$95 (if space available)

Please deposit payment (and identify it with your name) to our account: NBS 03 1354 0229034 16

We warmly welcome editorial contributions to the Grapevine from all residents in the Moutere and Tasman regions. You make the newsletter an interesting read!

There is no cost to having your articles published, but if you are telling the community about a commercial or fundraising venture, we do appreciate a small donation to help us cover our costs (see above for bank details).

**The deadline for each issue is 15<sup>th</sup> of the month.**

Please email your copy to: [umograpevine@hotmail.com](mailto:umograpevine@hotmail.com)



**Richmond Office**  
 203 Queen Street, Richmond  
 Office: 03 544 2900  
 Fax: 03 544 2909  
[sharon.dejong@summit.co.nz](mailto:sharon.dejong@summit.co.nz)  
[www.summit.co.nz](http://www.summit.co.nz)

**Sharon De Jong**  
 Sales & Marketing Consultant

**Mobile: 0273 202 196**



**SUMMIT**  
 REAL ESTATE LTD  
LICENSED UNDER THE REAL ESTATE AGENTS ACT 2008



# MOUTERE HILLS COMMUNITY CENTRE



## A WORD FROM KATRINA

It is with great excitement that we can now inform you that work is beginning on the development of the Community Fitness Centre. The concept was first put forward at a Community Consultation and the idea has grown from there. Thanks to valuable community feedback and support for the idea, plans were drawn up and a funding plan developed. Due to incredible support from Canterbury Community Trust, Sarau Trust, Pub Charity, IMB Contracting and local businesses and Community members we have now secured all the funding required to build the addition which will house the Community Fitness Centre. It is expected to take approximately 3 months to complete.

We are now beginning work on securing the funds required to outfit the Fitness Centre. We are looking for an overall naming rights sponsor as well as other businesses that maybe interested in sponsoring the development of particular areas within the Fitness Centre. If you own or work for a business that maybe interested in supporting this exciting Community development then please do not hesitate to contact me on 543 2516 or 027 511 8825.



With support from the Tasman District Council, Moutere Hills Community Centre have developed a landscape plan to create an outdoor Community Recreation space. Thanks to everyone who provided feedback on this plan. We will be forming a landscape committee that will lead the development of this area. We would love to have as much community input as possible so invite you to join this landscape committee, or if there is a particular area that you have expertise in and would be willing to support this project then please either send me an email or give me a call at the Centre.

Thanks *Katrina*

## COMMUNITY RECREATION *with Vanessa*

With the colder days upon us, we are turning up the heat here at Moutere Hills....

Join Sam on Friday nights 6—7pm for her brand new **Aerobics Class**. Fun, low-impact class working on core strength & balance with music you can sing along to. Don't think of it as exercise, more a case of meeting up with friends and dancing the night away!

First session is on **FRIDAY 9th MAY** and is **FREE**. The bar will be open afterwards to buy drinks so bring some friends and join in the fun!

**Badminton (Tuesdays)**

**Youth & Adults Social Table Tennis (Wednesdays)**

**Social Volleyball (Thursdays)**

All just \$3 per session

Starting soon!!

**Social Indoor Bowls**

For the children

**Gymnastics with Sam (Mondays)**

**Dance with Jane (Fridays)**

## CLUB NEWS

### Upper Moutere Tennis Club

**Ferrick Cup - Sunday 4th May** (1.30pm sign in for a 2pm start)

This is a fun and social tournament to mark the end of the season. All welcome!

**Lodestone Classic - Sunday 18th May** Come and enjoy watching some great tennis as teams from around the region compete to be Lodestone champions!

### Rangers Rugby Club

The Rangers Senior team is this year competing in the Senior B competition. Games are on Saturdays, usually around 1:15pm, and they would welcome any new players!

Junior Rugby begins on Saturday 10 May. If your child is keen to play rugby but you haven't yet registered then you can email

[Rangersrugbyjab@gmail.com](mailto:Rangersrugbyjab@gmail.com)

### Rangers Football Club

Junior football is well underway with Rangers being well represented across the grades. Some good results are coming in and it's great to see so many young footballers enjoying Saturday game day. Go Rangers Footballers!



**Phone: 543 2516**

**Email: [enquiries@mouterehills.org.nz](mailto:enquiries@mouterehills.org.nz)**

**Website: [www.mouterehills.org.nz](http://www.mouterehills.org.nz)**



## COMMUNITY

**The Sarau Trust are**

**delighted to advise that they have distributed the sum of \$28,100.00 to the Moutere community following the 2014 Sarau Festival.**

We are delighted to advise that the 2014 Sarau scholarship of \$1,500 has been awarded jointly to Josh Grant and Josh McPherson both of whom have been selected to represent NZ in junior softball.

Donations have been made to the following: Upper Moutere Fire brigade, Country Kids, Moutere Youth Group, Rangers Rugby, Rangers Football, Rangers Netball, Upper Moutere Tennis, Moutere Cricket Club, Kidpower/Teenpower/Fullpower, Moutere Youth Trust, St Paul's Community Support Fund, a water fountain for the Domain grounds, and the cycle/walkway project to link Upper Moutere School and Village with MHCC. There is also a sum set aside to support the publication of the Grapevine should this be necessary during the next 12 months.

The balance of the funds have been contributed to the Moutere Hills Community Centre for the ongoing refurbishment and development of the centre and the fitness centre for the good of the wider community.

Thank you all for your support and for making the 2014 such a successful Sarau Festival ensuring that we had funds to make these donations available.

### MADE IN THE MOUTERE CALENDARS 2014

Acknowledgement of support

Our grateful thanks to all those who bought calendars and in particular a special mention to those who sold them on our behalf with no fee or charge for doing so, especially those who did not feature in the calendar but helped anyway!

Thanks also to the 12 calendar participants who gave us permission to use photographs of their work or place of work; in particular Moutere Gold and Neudorf Dairy who helped to sell the majority of the calendars

Big thanks are also due to:

Jester House, Stoneridge Café, TDC Richmond Office, Country Kids, Jan Heine, Land of Clouds, Country Trading Mapua, Motueka Information Centre and the staff at Moutere Hills Community Centre.

With all your support we have raised \$2,386.62. for the Community Centre, and learnt a lot along the way!  
**GRATEFUL THANKS TO YOU ALL.**

*Overtheroad*

### LEIGH BRIARS ARCHITECTURE

03 543 2667  
021 215 0946  
briars@ts.co.nz  
RD 2 Upper Moutere  
Nelson 7175



## CONGRATULATIONS CAROLE & GRAHAM JONES ON YOUR GOLDEN WEDDING ANNIVERSARY!



Newlyweds become 'oldyweds', and 'oldyweds' are the reasons that families work. With you guys celebrating **50 years** of love, laughter and marriage, it's no wonder your family works. Congratulations on your 50<sup>th</sup> wedding anniversary on 1<sup>st</sup> May.





The senior rugby season is well under way with a few games in the Division 2 now under the proverbial belt. We have also had some great local support for the home games which has been creating a fantastic atmosphere down at the Community Centre - All welcome.

The senior team would welcome anyone else who is keen to play. Please come along to training from 6pm on Thursdays or contact any of the committee (as below)

The JAB (junior) games will commence from the beginning of May. We have 4 Junior teams U6 U7 U8 and U9. There are places in all grades if anyone is worried they have left it too late. Please don't hesitate to contact any of the committee or turn up for a run about on Thursday afternoons when most of our teams are training.

U6 and U7 grades play Ripper Rugby : this is a non-contact game with lots of running, passing and tries. U8 will be playing their first season of tackle and boy they are ready to get out there without the rips and get dirty!!

Our very enthusiastic tough U8 will be into their second season of tackle, playing line-outs and uncontested scrums.

If you want to have fun and play a great fitness sport come along to Family Touch on Tuesday nights 6pm at the Moutere Hills sports grounds- Gold coin donation.

The best of luck for the season to all Rangers teams for the upcoming season.

Contact [rangersrugbyjab@gmail.com](mailto:rangersrugbyjab@gmail.com) or <https://www.facebook.com/groups/rangersrugby/> Mark Forward 0274229949 or Moutere Hills Community Centre <http://>



## UPPER MOUTERE TENNIS CLUB

*Mission: To be a friendly community tennis club that promotes and encourages participation for fun, fitness and achievement for all ages and levels*

### THE LODESTONE CLASSIC 2014 - Invitation Only - Sunday 18<sup>th</sup> May at 10am.

We had a break last year while the Moutere Hills Community Centre was being rebuilt, and now we are ready to use our newly renovated community room with an expansive view of our tennis courts. The Upper Moutere Tennis Club is returning with its popular interclub mixed doubles tennis tournament, which is sponsored by Lodestone Wines. It is also generously supported by local businesses: Brambley Orchards; Lodestone Wines & Seeds; Moutere Gold; Moutere Inn; Moutere Motors; Neudorf Dairy; Neudorf Olives; Owen Bartlett Pottery; Pomeroy's; Proper Crisps; and the Upper Moutere General Store.

The tournament will take place a month earlier this year on 18<sup>th</sup> May, starting at 10am and finishing at 4pm. So please be advised that the public court will not be available for casual use during this time. However it will be a great opportunity to watch in action some top doubles combinations from the Nelson region.

Come down to the courts at 2pm if you want to catch the grand finals.  
The postponement date for this tournament is 25<sup>th</sup> May 2014.

### SUMMER INTERCLUB RESULTS

#### A) SENIOR

We have had several teams representing the Upper Moutere Tennis Club playing in the Nelson Bays Summer Interclub Competition. Three teams competed in the B Grade Ladies Competition, and our Upper Moutere Merlot team (consisting of Gabrielle Waring, Elizabeth Courtenay & Jeanette Tunnicliffe) won the competition. We also had one team playing in the A Grade Men's & B Grade Men's Competition, and one team playing in the Social A Mixed Doubles Competition.

#### B) JUNIOR

Many of our junior players had success playing in the Nelson Bays Junior Inter club competition with standout results below:

Tom Lusty and Oscar Symonds - Open Grade Winners  
Brad Mairs and Will Smith - Open Grade Runners-up  
Jackson Kemp and Erik McBride - 13yrs & under (Social) Winners  
George Stephenson and Daniel Taylor (Mapua) - 13yrs & under (Social) Runners-up  
Ryan Mairs and Marshall Hore - 13yrs & under (Competitive) Winners

### FERRICK CUP - End of Season Tournament - NOW Sun 4<sup>th</sup> May - 1.30pm

Our end of season fun tournament was rained off on Sunday 13<sup>th</sup> April. It is rescheduled for Sunday 4<sup>th</sup> May 2014. Come along and hit a few tennis balls with us. Registration will be at 1.30pm with play starting at 2pm. We will have afternoon tea to finish up, please bring something to share.

For details on how to become a member of Upper Moutere Tennis Club or if you need any further information please contact Vanessa Mairs 543 2332 or Jeannette Bent 543 2324 or email: [UMOTennis@gmail.com](mailto:UMOTennis@gmail.com)



## Recording Studio In Upper Moutere

Very friendly and non-intimidating. I can record your song ideas - even help you write them - and play the instruments for you if needed.

Also: Radio Spots, Jingles, Eulogies, Backing Tracks, Albums, Mastering, Guitar Tuition.

**Industry-standard production quality, and very affordable.**

**Phone Rick: 5432 329 Email: [rick@7thsense.co.nz](mailto:rick@7thsense.co.nz)**

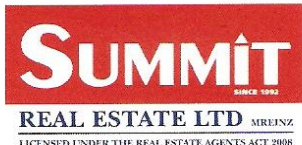
**[www.studio.7thsense.co.nz](http://www.studio.7thsense.co.nz)**

Don't die with the music still inside you.



**Kylie Taikato**  
Sales & Marketing Consultant

**Mobile: 021 152 8195**  
**After Hours: 03 543 2623**



### Richmond Office

203 Queen Street, Richmond  
Office: 03 544 2900  
Fax: 03 544 2909  
[kylie.taikato@summit.co.nz](mailto:kylie.taikato@summit.co.nz)  
[www.summit.co.nz](http://www.summit.co.nz)

Property  
Powers of Attorney  
Subdivision  
Business  
Trusts  
Relationship Property  
Wills & Estates



**Rachel Rumball**  
solicitor



**Emma Marshall**  
solicitor



**Ron Thomson**  
solicitor

**smythes LAWYERS**

300 Trafalgar St, Nelson  
Tel 03 546 8750  
[enquiries@smytheslaw.co.nz](mailto:enquiries@smytheslaw.co.nz)  
[www.smytheslaw.co.nz](http://www.smytheslaw.co.nz)



02900077AA

**THE WRITE BIAS****NEWS FROM MAPUA BOWLING CLUB**

The rinks have been buzzing in this latter part of the season with club members enjoying some Indian summer bowling. With so much sunshine eerie figures have been spotted emerging from the Man Shed to get early preparations underway for the forthcoming green renovation project.

League bowls finished on Monday 31 March with a good turnout on the green and at the bar. It is hoped that the new committee to be elected in May will continue with Monday evening sessions next season to enable the workers of the world to enjoy some games of lawn bowls.

The final tournament before Closing Day was played on Saturday 5 April, a half day of drawn pairs, always a popular event. Well done to the winning pair, which just happened to be me drawn alongside Colin Pryke. What a dream team! As always we are indebted to the sponsors of all our tournaments throughout the year - Holistic Health & Training, Harcourt's, Nelson Building Society, Super Liquor, Golden Bear, Motueka Golden Bay Funeral Services, Joyce Colwell, Dale Vercoe, Jellyfish and the Smoke-house.

It is a hard act to compete at Nelson Centre level so it is extremely satisfying and encouraging when some of the Mapua championship winners are prepared to put their heads above the parapet to play in the Champion of Champions matches. Ben Whitten and Julina Ismail entered the Junior Singles; Sue England and Les McAlwee battled in the Senior Singles; Sue and Julina played in the Senior Pairs; Sue and Jean Daubney played in the Veteran Pairs. A good effort that keeps the Mapua flag raised.

Social evenings start in May and continue throughout the winter months on the first and third Fridays, 5 - 8 p.m., where lawn bowls is exchanged for indoor carpet bowls, table tennis, pool and cards. We would be delighted to see some new faces and Jean or Dave would be happy to tell you more about it.

For information about bowling, coaching or booking the clubhouse and facilities please call Secretary Jean Daubney (540 3281) or President Dave England (540 2934) or email [s1ad2as3@xtra.co.nz](mailto:s1ad2as3@xtra.co.nz)

*Sue England*

**Fully Equipped Automotive Workshop**

---

**All Makes & Models**

---

**6 Courtesy Cars**

---

**W.O.F.**

**20 WARREN PL, MAPUA**  
**PH 03 540 2180**  
[mapuaauto@mapua.biz](mailto:mapuaauto@mapua.biz)  
[www.mapua.biz/mapuaauto](http://www.mapua.biz/mapuaauto)

**Bulk Liquid Waste Transport**

**Submersible Pumps**

**Farm Ponds**

**Septic Tanks**

**Winery Waste**

**Grease Traps**

**03 546 7632**  
or Freephone  
**0800 235 874**  
**(0800 2 FLUSH)**

**info@astroenvironmental.com** **www.astroenvironmental.com**

**DEBBIE WATSON**  
Licensed Real Estate Salesperson (REAA 2008)  
**03 544 5488 or 021 462 629**

**Thinking of Selling?**  
**call me for a confidential chat about your property.**

**\$500 base fee, commission starting from 2.95% on the first \$400,000 and 1.95% thereafter + GST**





## Aimee's wee snippet



Hey there, my name is Aimee and I work in the Ngā Whetū Programme which is specifically designed for children aged between 2–3.5 year olds. One thing that I am passionate about is nature and teaching our children to show respect and have time for all things living and non living. I endeavour to ignite passion, curiosity, wonder and excitement with the children as they learn about nature and the world around them.

On Wednesday and Tuesday Kath Bee came and graced us with her presence. She came with her guitar, shakers and **fun**tastic songs. The children were engrossed in her every word, animated when she asked them questions such as "Do you have a messy bedroom?" "I don't make a mess.... Then who does?" Some children couldn't resist placing blame on their older brothers and sisters!! One child shared that the Dragon makes the mess and she was right. The song 'Dragons under my bed' is a favourite with the children and teachers, all were involved singing to the top of their lungs it was so much fun. Kath then handed out shakers, the children had to be gentle and listen carefully to her instructions to know when it was their turn to shake the shakers and shake them up and down. The atmosphere was one of excitement, curiosity, comfort and delight. The children had a blast as the photos convey. Thanks Kath Bee!!



For more news on what's going on visit our website: [www.countrykids.org.nz](http://www.countrykids.org.nz)

## Tasman Gymnastics Club



- Developing fundamental movement patterns, crossing midlines and improving brain function.
- Fun, safe and positive learning environment.
- Improves spatial awareness, eye tracking, confidence and more.
- Develop use of imagery, problem solving and cooperative games.
- Develop strength, flexibility & coordination.
- Provide children with sound base for all sports.
- Sessions are run by qualified coach with over 25 years' experience.



### Mondays @ Upper Moutere Community Centre



1½ - 3 yr olds	12.45 - 1.30pm	\$65
2½ - 4 yr olds	1.45 - 2.30pm	\$65
5 - 7yr olds	3.15 - 4.00pm	\$85
7 - 9 yr olds	4.15 - 5.10pm	\$85
9+ yrs**	5.15 - 6.30pm	\$90

### Wednesdays @ Motueka Recreation Centre

1½ - 3 yr olds	12.45 - 1.30pm	\$65
2½ - 4 yr olds	1.45 - 2.30pm	\$65
5 - 7yr olds	3.15 - 4.00pm	\$85
7 - 9 yr olds	4.15 - 5.10pm	\$85
9+ yrs**	5.15 - 6.30pm	\$90



\*\* = Parents asked to stay for 10min to help pack up equipment

## Term 2 starts from Monday 5<sup>th</sup> May for 8 weeks.

All classes must be booked in advance, by booking a place you are agreeing to pay the terms fees.

For more information contact Sam on: (03) 5432512 or [samantha\\_slade@hotmail.com](mailto:samantha_slade@hotmail.com)



## News from your Preschool in The Moutere

Kia ora koutou.. The weather has been so warm and sunny but it seems we are into autumn well and truly with this week's rainy weather. At Harakeke we are in the midst of preparing for Easter with children embracing all the fun and festivities this seasonal celebration brings... Children are showing their natural creativity as they decorate Easter eggs and rabbit ears. It's not long now to wait for a shared afternoon tea and Easter egg hunt and while I am writing this the smell of hot cross buns and Easter biscuits is wafting through Harakeke. Some children have even been inspired to make maps for the Easter egg hunt. We trust you all have enjoyed a visit from the Easter Bunny and had a nice Easter break.

Speaking of our animal friends, we took opportunity to visit the newly opened Animal Farm in Gardner Valley Road. What a fantastic experience for children to get close to animals familiar and not so familiar. Feeding the fawn and having donkey rides were among the highlights of our day. We certainly recommend this as fun hands on family outing for the school holidays!

Thank you to everyone who has contributed to our trading truck. The children had a hopefully rare learning experience in problem solving as our koha box was ripped off from its home a fortnight ago. Discussion with the children led to some unique ways to deal with the offenders such as "Let's make a plastic trap, capture them and then take the money off them!" Another child was responsible for helping Gundula ring the police and filing an official report. We will let you know if there are any interesting developments regarding this incident!

Ka kite ano, your Harakeke teaching team.

## Upper Moutere Volunteer Fire Brigade

Callouts from 16th Feb to 15th April

17th Feb Dawson road, MVA/forest fire  
17<sup>th</sup> March cat rescue Upper Moutere

9th April MVA Moutere Highway

10th April child stuck in tree Supplejack Valley Road.



*A reminder that now daylight savings has ended, it is a good time to replace batteries in smoke alarms. And as winter approaches remember to get your chimneys cleaned.*

## LOCAL MIDWIFE CLARE SPRATT

**Ring Clare for friendly professional maternity care and advice.**



*I offer full 24 hr maternity care from conception through to 6 weeks post natal, home/hospital and water births, birthing pool available, natural remedies, free pregnancy testing, breastfeeding support and much more.*

T: 03 526 7764

M: 0273324929

E: [midwifeclarespratt@me.com](mailto:midwifeclarespratt@me.com)

## Yoga.

Breathe - Be still - Surrender - Be strong

**Ashtanga Yoga**  
is flowing and dynamic, integrating breath with movement

2 Introductory sessions – attend either or both  
Beginners welcome

Saturday May 24<sup>th</sup> & 31<sup>st</sup> 9-10.30am

then Tuesdays 6 – 7.30pm (starts June 3<sup>rd</sup>)

Venue : 'The Woolshed', Lancewood Villa,  
109 Kelling Rd, Upper Moutere

BYO yoga mat and blanket, \$12

with Ange Palmer  
0211450334 / 03 5530353  
[www.angepalmer.com](http://www.angepalmer.com)

**Ange Palmer**  
CONTEMPORARY PLANT MEDICINE  
SUSTAINABLE WELLBEING

## DOROTHEA TEBBENHOFF

HEILPRAKTIKERIN  
LICENSED ACUPUNCTURIST

25 GREENWOOD ST  
MOTUEKA

[WWW.TASMANACUPUNCTURE.CO.NZ](http://WWW.TASMANACUPUNCTURE.CO.NZ)

03 528 6239

MNZRA, ACC PROVIDER

Acupuncture  
Chinese Herbal Medicine



Chí



*Swim @ Mapua Chalets*

Did you know our  
indoor and outdoor  
pools are now open  
to the community  
throughout the year?



Book your private pool experience instantly on our website at  
[www.activekidzswimschool.co.nz](http://www.activekidzswimschool.co.nz) or call 03 540 3310





## Upgrading the Moutere Hills Water Supply

*Feedback from the Public Meeting organised by the Moutere Hills Residents Association.  
Moutere Hills Community Centre April 16<sup>th</sup> 2014.*

The purpose of the public meeting was to explore ways to provide a suitable potable water supply for residents of the inner Moutere Hills and valley. A well attended meeting heard Tasman District Councillor Brian Ensor and TDC Engineer Joseph Thomas describe the history and shortcomings of the present Dovedale scheme, and the limitations of the Moutere Valley Aquifers

Mike Eggers of the Braeburn Water Scheme covered the possibilities of basing a community scheme on either the Moutere Valley bores or the Motueka gravels at Pangatotora, using an existing bore. His report is included below.

The main points to emerge at the meeting were:

The present Dovedale scheme is not suitable for household use. It uses surface collected water, carries a varying large sediment load, and is insufficiently treated (chlorine only). The scheme is running at capacity and often runs short over summer. It cannot cater for increased population growth and already is unable to service demand. The distribution pipelines are in poor condition and regularly break down making the scheme unreliable and expensive to operate.

The Tasman District Council concluded some time ago that the scheme should be upgraded by creating a new, cleaner source in the Motueka River gravels with treatment to meet current health standards; \$1,654,200 was budgeted for this upgrade to be carried out by 2018/19. This project was deferred, when the possibility of a \$40,000,000 coastal pipeline from the Motueka gravels to Mapua was mooted. The Dovedale scheme was put on hold and does not appear in the present 10 year plan. The future of the Coastal pipeline (which could supply the Moutere residents) is uncertain, in part because of existing council debt load and the need to construct the \$45,000,000 lee valley dam to supply the Waimeas and Richmond, and probably Mapua. Should the dam go ahead and supply Mapua, there would be little possibility of the Coastal pipeline going ahead. We do not know the possibility or cost involved of increasing the lee supply to Mapua to in turn service the Moutere Valley.

The Council is obligated under the Health Act 1956 (as amended 2007) to take all practicable steps to comply with the drinking water standards for water being supplied to the Moutere Residents by July 2015. A Water Safety Plan to achieve this outcome (PHRMP) was to have been approved by July 2012 - now moved forward to July 2014. Compliance with any effective Water Safety Plan by July 2015 does not seem likely.

Use of the Moutere Valley Aquifers was discussed at some length but was not seen by TDC or other commentators to be a suitable source for a community scheme.

Mike Eggers presented the possibility of using the existing bore in the Motueka River Gravels at Pangatotora. Volume and quality have been shown to be suitable, and Mr Eggers presented rough figures to show that a system with high volumes of potable water could be constructed to run through to the eastern end of the Dovedale Scheme, servicing all the Moutere Valley and Upper Moutere residents at a reasonable cost. Viability would depend on the majority of Upper Moutere area Dovedale users switching over to the new scheme.

The Meeting concluded with a resolution:

“That a committee be formed to discuss with Tasman District Council the need to move, without delay, towards the provision of a potable water supply for residents of the inner Moutere hills and valleys, taking regard of the suitability and financial viability of all options; and to formulate and drive a plan to achieve this outcome without delay.”

The motion was carried unanimously.

The Moutere Hills Residents Association are facilitating the formation of this Moutere Hills Water Supply Group.

If you as so many in the region, are unhappy with the state of your current water supply and would like to keep informed on the progress of this issue, get on our mailing list by sending a simple email with "Better Moutere Water" in the subject line to: [feedback@mhra.org.nz](mailto:feedback@mhra.org.nz) - We will keep you updated on the development.

Furthermore, if you feel you would like to help with the newly formed steering committee or in any other way, just drop us an email at [secretary@mhra.org.nz](mailto:secretary@mhra.org.nz) and we will get in contact with you.

We are a small community and everybody's participation counts.

Tim Finn— *Chair, Moutere Hills Residents Association.*

Email [secretary@mhra.org.nz](mailto:secretary@mhra.org.nz)



## Braeburn Water Scheme Update.

We now have a much better understanding of the possibilities of taking water from the Moutere Valley aquifers.

There are many issues that led us to realise there must be a better alternative.

These aquifers are very limited in their ability to produce the volume of water from any one source in the quantity we need. The gravels that hold the water are "tight" meaning there is little storage capacity and therefore very slow movement of water to replenish that which is withdrawn.

So very small flows (takes) from numerous bores would be the resulting scheme. Each "take" site would require filtration to comply with the new drinking water regulations.... As a new scheme, it must comply from day one.

The present allocation data is all about irrigation. It allows the winter to "recharge" the gravels..in effect the reservoir is depleted during summer to a limit that ensures the winter recharge will have it ready for the following summer. We would need to take for 12 months of the year so all the figures would need to be re-established.

Every time a new bore/take has been established the entire reservoir is affected. Its now at a point where one single big take is out of the question.

It would be a last resort. There has to be something better.

There is a large bore at Pangatotora on the Motueka River, that was established & test pumped back in 1998. It was never used but showed the available flows to be very large, water quality very good. If that source was used & routed thru the Waiwhero Valley & over the hills to a point at the intersection of Old House Road & Central road, it could supply the entire valley with both domestic & stock water.

We have roughly estimated the cost of a scheme using this source. Those figures look very encouraging but we need to get direction from potential users to take it to the next step which would be a detailed costing. The start point for that requires a better scope of the extent of the scheme. We see this source as supplying enough water to enable the Moutere to cut the Dove scheme loose and connect to a supply of pristine water. It would provide enough water to future proof the demand for very long time. It does need commitment from a large number of the community but that is common to any scheme.

It seems to me it is time to forge ahead with a scheme based on supplying the entire area as much as possible with water of unlimited supply and high quality at source. To do this we need a new group of Moutere Valley users to make this happen. It seems logical that the BWSC disappears in the process.

Mike Eggers

## MOUTERE INN



THE CENTRE OF THE MOUTERE SINCE 1850

- Craft Beer
- Local wines
- Bar meals
- Lounge bar
- Real Ale
- Live music
- Evening Dining
- Rooms

EST<sup>D</sup> 1850

All welcome

Available for functions and private bookings

### COMING EVENTS AT THE MOUTERE INN

#### ❖ MOTHERS DAY LUNCH SUNDAY 11<sup>th</sup> MAY

We will be offering a special Mothers Day, set menu lunch, for \$25 per person. There will be two sittings, 12 – 2 pm and 2 – 4 pm. The first six tables booked for each sitting, will receive a complimentary bottle of the gold medal winning Kahurangi Riesling for Mum to take home. Grab a flier from the bar or see our website for full menu details. Bookings essential.

#### ❖ LIVE MUSIC 7PM SAT 17<sup>th</sup> MAY "PANDA"

William Coffey is an accomplished singer and guitarist, whose music is described as a rare compilation of folk, blues, pop, soul & jazz.

#### ❖ FINE DINING EVENING SAT 31<sup>st</sup> May 7pm \$45

We will be offering a relaxing evening, of fine dining over five courses. Focusing on produce from the Moutere Artisans we will also be matching local wine with each course. Bookings essential, check our website for menu details.

#### ❖ DON'T FORGET

Raffle every Wed 6pm with Chase the Ace and Steak Wed.

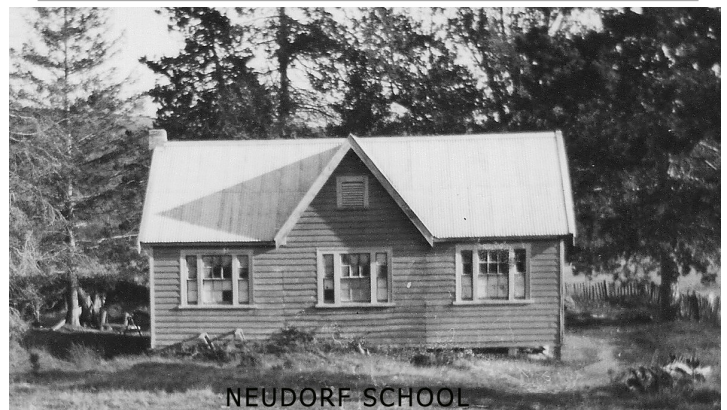
1<sup>st</sup> Thurs Folk Night. This month the 1<sup>st</sup>.

2<sup>nd</sup> Thurs Quiz Night. This month the 8<sup>th</sup>.

Last Thurs \$20 Ribs Night. This month the 29<sup>th</sup>.

THE MOUTERE INN  
THE CENTRE OF THE MOUTERE

Phone 543 2759  
[www.moutereinn.co.nz](http://www.moutereinn.co.nz)



NEUDORF SCHOOL

### DO YOU HAVE PHOTOS OF THE NEUDORF AREA, PARTICULARLY THE EARLY COMMUNITY, SCHOOLS AND HALL?

We are looking for shots of both school sites, particularly the first building as a school, community hall and finally a playgroup. Shots including people are especially of interest.

Back in 2003 the Neudorf Community through its Association voted to sell the old Neudorf Hall and grounds, and donate the money to the proposed Moutere Hills Community Centre. The \$250,000 they raised, together with a substantial Rangers Rugby club donation, provided a vital kick-start to the community fundraising effort and helped convince the Tasman District Council that the community's aims were worthy of support.

The Neudorf community is commemorated in the Neudorf Foyer at the centre. Work is underway to supplement this with map of the district and an interactive touch screen display, featuring slideshows of various community groups, historical sites, etc. The first of these slideshow stories will feature the history of the Neudorf community and its schools and hall. Hence the call for photos. Photos selected will be carefully scanned and attributed, with the original returned to the owner.

If you have any shots which may be suitable for this or other historical presentations, could you please contact Jenny Briars on 5432667, or email [briars@ts.co.nz](mailto:briars@ts.co.nz). Many Thanks.





## Hello animal lovers

Many pet owners will swear that their pet knows exactly what they are talking about. This applies whether it is a budgie, cat, dog, horse or any other pet. The fact is that none of our pets knows what we are saying, only the way we are saying it.

Without exception, animals' first language is body language. They understand sound and tone but not words. Yes, they can learn that certain words are associated with a certain action eg. "sit". The dog is taught to sit to this command. However, far more important and effective is the owner's body language. Many pet owners do not understand what is inappropriate or even threatening body language which can trigger dangerous and fearful behaviours in animals. As I mentioned last month children often use the wrong body language which can result in serious injury to them.

Learning appropriate body language can take many years but here are a few quick tips:

- \* Do not raise arms and hands or waive them about
- \* Avoid direct eye contact
- \* Never taunt an animal with food
- \* Do not rush up to an animal
- \* Be consistent with actions
- \* Be clear with body language
- \* Use soft and encouraging tones when animal has done well
- \* Keep your adrenaline low - animals pick up on energy levels all the time
- \* Never use pain to control an animal ever it will always associate the pain with an action

There are many more that could be included but my suggestion is that all pet owners should find out as much as possible about body language and animals. There are many good dog training clubs and horse and pony clubs as well as breeders, all of them good sources of information.

## Horse Cover & Gear Repairs

+ Horse Cover Washing

+ Prompt Service

+ Good Rates

**Contact Lawrie**

**1350 Moutere Highway**

**PH 5432 234**

**CLICK  
WITH  
HORSES**

BETTER PERSON | BETTER HORSE



**Jeanette A, Garrett B.H.S.I., Ad. Dip. Ed.**  
**Registered Equestrian Sports NZ Performance**  
**Coach & Coach Educator**  
[www.clickwithhorses.co](http://www.clickwithhorses.co)  
**ph: 03 528 7123**



**DUSTY DIGGERS**

**Give us a ring for :**

- ⇒ **Excavating (2,6,12,20 ton)**
- ⇒ **Gravel/rock supply**
- ⇒ **Driveway construction & maintenance**
- ⇒ **Agriculture contracting**

**Phone Barry: 021 533 118 or 543 3771**

I cannot emphasise enough the importance of how to use body language to communicate with animals. If done correctly it will keep you safe and bring much pleasure.

I am always happy to answer any animal behaviour questions

Susan Mott Animal Behaviourist  
 0212664211



## Gathering Nuts in May?

*Some of you may have nuts you have harvested, here's something tasty to do with them...*

### HAZELNUT SPREAD

150g hazel nuts, 240g Milk chocolate, 100g plain dark chocolate, 100ml vegetable oil, 1 tablespoon cocoa powder 3 tablespoon icing sugar, 1/2 teaspoon vanilla.

Heat oven to 150-170C, place nuts on a tray cook for approximately 8 mins, remove from heat place into clean dry tea towel and rub to remove skins.

Melt chocolate in a heatproof bowl that is set over a pot of simmering water, stir until smooth and put aside to cool.

Put the nuts into a food processor and whizz until very fine, add oil give a quick whizz then add icing sugar, cocoa and vanilla. Process until it forms a ball then slowly whizz in the melted chocolate.

Put into a jar and store up on your highest shelf.



### Chestnuts

Depending how you are going to use them, you can cook them by boiling in the skins for 15-20 minutes, peel while warm, then push through a sieve.

If you are roasting them in the oven, they must have holes in the skins to prevent an explosion. Roast for 15 minutes in a hot oven.

They can be used in a variety of dishes sweet and savoury. Ground finely, use them in hummus, soups and apple pie, or fried with a little bacon over brussel sprouts and delicious in stuffings.

Whole, they can be dipped in chocolate for something a little bit different.

Store nuts in dark cool place—the fridge is best as it will keep them from going rancid,




**Producers of Organic & Natural Vinegars**

**Charlie & Trish Goulter**

Ph: 03 540 2474  
Cell: 027 846 3111  
products@vinegarpower.co.nz

122 Tahunanui Drive,  
Nelson  
www.vinegarpower.co.nz




## FREE TEA OR COFFEE FOR GRAPEVINE READERS

Spend over \$10.00 on anything at the Neudorf Dairy Cheese Shop & receive a tea or plunger coffee for one.

Expiry: 31 May 2014. Use in one transaction. Not redeemable for cash.

Neudorf Dairy Cheese Shop – 226 Neudorf Road - Open Wed to Sun, 10-5pm

## FROZEN BERRYFRUIT

- Boysenberry, Blackberry and Karaka berry
- 1kg free flow packs - 2<sup>nd</sup> grade
- \$5 per kg (or buy in bulk 5kg  for \$20)

*Great for smoothies, jam, baking, on breakfast cereal, in yoghurt and ice-cream etc.*

## Celebrate Mothers Day with the Moutere Inn

Sunday 11th of May  
Book for one of two sittings:  
12pm - 2pm  
2pm - 4pm

*The first 6 tables booked for each sitting receive a complimentary bottle of the medal winning Kahurangi Riesling for Mum to take home.*

## Mothers Day Menu



*Main Choices*  
Classic Beer Battered Fish & Chips  
with Tartare sauce & house salad, or

Slow-Roasted Shoulder of Lamb  
with veggies, Yorkshire pudding & mint sauce

*Dessert Choices*  
Bread & Butter Pudding  
with vanilla icecream, or

Sticky Date Pudding  
with caramel sauce and cream

\$25.00 per person, \$15 for kids

For bookings please call: 543 2759  
or email: info@moutereinn.co.nz  
www.moutereinn.co.nz





**Do you remember** that young bloke that ran for Upper Moutere last sports day and won back the Peace Shield for his school? Well, that just signalled the start of a pretty spectacular season for our local boy Jacob Bryan. He's just completed a summer of athletics that got better and better.

A scholarship to Motueka High School and an invitation to try out for their Athletics Academy was the next achievement where he then impressed at the High School Athletics day by winning all five of the events he entered in and broke records for high jump, 400m and the 800m.

He then competed in the Regionals for Motueka High School and won both his 400m and 800m against the other local Nelson, Takaka and Marlborough High schools and posting PB's for both events with 58.00 secs and 2.16.01 respectively. This 800m time was 2 seconds faster than his previous best posted at the Tasman Club Champs a few weeks earlier. This was followed by a trip to Timaru for the South Island Secondary Schools championships.

It should be noted here that Motueka High School sent 20 athletes to this event and won 20 medals placing third of all the schools in the South Island with only St Bedes and Rangiora High School ahead of them. This was fantastic from a school of only 670 odd students. They (and their coach, Tony Aitkenhead) are a credit to our community.

Jacob competed in the 400m and 800m in Timaru running 3rd in his 400m heat in 58.00 flat (again) and qualifying 6th for the final before running 5th in his final on the last day on a sore knee and a respectable 58.38.

His favourite event is the 800m and he was pretty nervous before the race but put the nerves aside to run a beautiful race. He was running 4th with 120m to go but kicked past two runners and finished second in another PB of 2.11.37 ... almost 4 seconds faster than he had ever run before. His coach, Tony, was delighted because they had targeted a time of 2.12 and Jacob had done just as he was asked!

Meanwhile, Jacob was still competing at Club level coming 2nd overall in the Tasman Champs (a 2 day event covering 8 events), breaking a long standing Motueka Club record for the 100m and winning his age group for overall results.

The season has just been capped off with a trip to the Inter-provincials held in Hastings and featuring the best 12 and 13 year old athletes from all across the country. He competed creditably in the high jump and 200m (not favourites) and then had the 13th fastest time in the 400m with another personal best of 57.29.

The highlight though was a beautifully judged 800m run. He won his race convincingly with another strong kick with about 100m to go and holding on to win from the Waikato runner by about 10m. His time of 2.11.42 was the third fastest time overall which is a fantastic effort for a country boy in a little village that no-one has ever heard of!

He's not satisfied with third though. He's got his eye on that Otago boy who beat him in Timaru and Hastings ... so watch this space.



**Riverside  
Café**

289 Main Rd Moutere Highway  
Tel: 03 526 7447  
E: [riversidecafe.news@gmail.com](mailto:riversidecafe.news@gmail.com)

### *Saturday Evening dining continues!*

Thanks to customer demand, we are staying open for dinner on Saturday evenings from 6pm throughout May; reserve a table today! (note; we are now closed Friday evenings)

### *Mothering Sunday, May 11th*

A special celebratory lunch menu, awesome desserts, plus a fine selection of local wines & bubbles will be on offer. Bookings essential.

### *Birthday club*

Why not join our Birthday Club?! Your birthday voucher is valid for your entire birthday month; you get your main meal free when dining with a minimum of 3 friends. Contact us for details; terms and conditions apply.

### *Riverside Café*

*Open 7 days a week from 9.30am to 5pm*

We are part of the thriving Riverside Community. Our menu always offers a selection of wild meats, local specialties and lots of home-grown organic produce presented in an inspiring & delicious seasonal menu. Awesome coffee, cakes & brioche. Indoor & outdoor seating. Children welcome; we have a cool playground!



RiversideCafe&CommunityNZ

## **Sun Electrical Ltd**

***Electrical Services Moutere and Surrounding Districts***

**03 5402367 – Tony 0273784580**

*Our electrician has the benefit of over 30 years of commercial, industrial and domestic electrical work experience. We can therefore, offer you excellent service and advice on your electrical requirements. We have a well-stocked van and our prices are very competitive.*

House wiring – rewiring – alterations - kitchen upgrades - switchboard replacement - new mains and upgrades. Inspections and testing - Caravan electrical WoF (\$55 inc gst at our base) Lighting – sensors - pumps and variable speed drives - stove and oven repairs – sewage systems

Solar installation and repairs, on houses, sheds and mobile homes.

**For all electrical enquiries – please contact us here in Mapua – 124 Aranui Rd, phone 5402367**

Check out our website - <http://www.sunelectricalmapua.com>



## COASTAL GARDEN CLUB 3 MARCH MEETING

After welcoming members and conducting the general business President Adrian outlined the details for the proposed November rhododendron visit to Taranaki. Names of those planning to join the group were noted and further details will be e-mailed to members. Members who visited Mike McGee's business were most impressed and a further visit for members who were unable to attend is planned.

Mara Stratton, a Wild Life Vet was this month's speaker.

For some years DOC has operated a project on Taumaka Island to monitor fur seals. Taumaka Island, part of the of the Open Bay Islands is off the west coast from Haast. The Island is 600 meters long, 12km off shore and one of the main breeding sites for fur seals.

Mara lives on the island in a small hut with five others during the months of December and January for the purpose of counting and tagging seals. All team members are dropped on the island by helicopter along with food supplies for the duration of their stay.

Mara outlined the history of fur traders in this area and entertained members with stories relating to her many visits to this island and her obvious fondness for these sometimes maligned creatures.

Unfortunately, fur seal numbers are continuing to decline. Over-fishing and reduced fish stocks in the area mean that females often have to leave their pups for extended periods and travel long distances to feed. Many pups die from hunger during these enforced absences. Slides and sound affects revealed that despite the island's isolation this is far from a quiet retreat and the vegetation creates a rugged beauty. Question time revealed enthusiasm for this project. In particular, our male members were curious to know more. Gino thanked our speaker.

Gino also conducted a garden forum. Many questions relating to fruit trees were discussed and answered. We were advised to shift trees from June to August and were told it is beneficial to add gypsum to the soil. Now is the time to take rose cuttings and they should be placed in sand.

A visit to Michael Edward's garden is planned and members will be emailed details.

A chat over a cuppa and cakes was followed by a session on flowers that members had brought to display. This was another meeting of compatible friendly folk.



**Water Features  
Paving  
Rock Work  
Irrigation  
General Landscaping**

**Michael Hardy  
Ph: 021 443 908  
A/H: 03 543 2555**

**Endurance spraying**

**All types of weed spraying  
Gorse and Brushweed  
Control**

**Commercial • Residential  
Forestry Road Spraying  
Moss treatment for lawns,  
concrete areas and decks.**



**Contact Pete Hughes  
021-194 2654 A/H 03 544 2654  
Growsafe certified •  
Approved Handler**



## Thank goodness for Council rubbish bins.

Andrew Smith

Calcium Carbide (CaC<sub>2</sub>) + Water (H<sub>2</sub>O = Acetylene (C<sub>2</sub>H<sub>2</sub>))

For many years acetylene was the caver's friend, and although not in general use today the caver still enjoys indulging sentimentally about its qualities. In the early days acetylene was used for street lighting but those who choose to store it for later use drew the fine line between saving a few dollars and total destruction of property and sometimes death.

Acetylene has had a chequered past, In fact , in the early days it was illegal to compress acetylene to more than 20 psi. The reason: acetylene degrades at 28 psi. with explosive results .It took many years of careful experiments to finally arrive at a safe way to store acetylene. Acetylene is produced when combining Calcium Carbide and water and this is what cavers did.

This chemical reaction took place in a small brass container which was mounted on the caver,s helmet (later a larger generator was worn on the hip) the acetylene produced was lit and a brilliant white flame was produced. After the carbide had been spent the generator was replenished and caving continued. Some rather interesting stories originated from the carbide/acetylene days.

One such story:

Long caving trips involved several carbide changes and as it is, the spent carbide (which is mostly damp lime) is collected and taken out for disposal (in the local Council rubbish bin or in that guy's letter box with the 4.00am Rooster/Peacock) Just joking: :-)

On this particular occasion the spent carbide bag was getting rather large. Now when we talk about spent carbide, it's never really fully spent; it's just that it has lost most of its ability to produce acetylene. Spent carbide bags often still produce small amounts of acetylene for many hours after being removed from the generator. This was the case when caver X peered into his cave pack presumable looking for a snack but the combination of the flame on caver X's head and the pack now full of acetylene gas, resulted in the demolition of the cavers pack and the loss of eyebrows.

**Another story:**

After a healthy walk several cavers entered the large entrance of Moonsilver cave. They had not long left day light when caver X realised with a sudden urge, that what comes natural had to happen and it was going to happen real soon. With an impressive burst of speed hoping to exit the cave before matters became much worse, caver X bolted for the out side world.

Things were going well but then another urge. The urges were coming thick and fast and it was soon apparent that caver X would have to choose a squatting position and choose it quick. So with daylight within grasp, and the comfort of a mossy tree waiting, Caver X reluctantly and hastily produced a plastic bag from his pack and proceeded to do what had to be done. It was in these few moments when nothing else mattered that caver X's light which burnt hot and bright set fire to the one and only plastic bag. The flames licked seriously close to bare skin, as caver X tried to prioritise between the original job half way done and the dousing of flames. Things were happening real fast and it was important to save the plastic bag as its job had only started.

Finally with the flames out and other pressures relieved, caver X relaxed. The result was, he had saved the plastic bag from complete combustion and had managed to remain accurate in the process. Feeling quite happy with the situation he started tidying up. It was only at this point that caver X realised that this one and only plastic bag was the very same plastic bag that contained his lunch. (Aren't Council rubbish bins great!)

**Yet another one:**

On long caving trips it is necessary to have a number of plastic bags to contain waste for disposal back in the outside world. Caver X ,always keen to keep things efficient , liked to make the most of each item; for example not having a spoon and a fork but having just one "Spork" (A spork is double ended cutlery, spoon one end and fork the other,) so having one item to do the job of two was great. Caver X tried hard to reduce excess weight and space by applying this philosophy to as much of his caving gear as possible.

On a particularly long caving trip both poo bag and spent carbide bag were becoming quite large so to save on plastic bags and in keeping with his base philosophy, combined the two waste products together. Caver X decided that because of the bio hazard that would exist if the bag were to break, he would multi bag this package. Six bags were used to make a strong bundle that would resist the beating that would certainly happen on the route out of the cave. The way out of the cave was fast and large passages made easy caving.

About an hour into the journey a hollow muffled boom was heard by the party, each turned to look at caver X who had a rather silly but "oh no" look on his face. The spent carbide in the bundle was still reacting and producing gas, later on yet another muffled boom was heard and then again, Caver X knew that there were six bags but with the frequency that the bags were bursting, would he make it before the last bag broke...

All I'm going to say is, thank goodness for Council rubbish bins.

### Catherine Munro Family Lawyer

**Now in Motueka every Tuesday for**

- \* Family Law
- \* Childrens Issues
- \* Relationship Property
- \* Mediation Services
- \* Protection Orders
- \* General Legal Advice
- \* Legal Aid



Ph : (03) 970 2965 or 021 2771261

Email : [cmunro@vodafone.co.nz](mailto:cmunro@vodafone.co.nz)

Motueka Community House, Decks Reserve-Every Tuesday  
(Or 185 Bridge Street, Nelson, 7010 on Mon/Wed/Thurs)

**MISSED AN ISSUE? LOOKING FOR THE PHONE NUMBER OF ONE OF OUR ADVERTISERS? You can access any of the past issues of the Grapevine online via the Moutere Hills Community Centre website: [www.mouterehills.org.nz](http://www.mouterehills.org.nz) Just go to the community page and see it all in glorious colour!**



**moutere motors**

Fast Turn Around • 24 Hour Fuel • Tyres & Batteries  
Full Automotive Repairs & Servicing • Trailer Hire  
Wheel Alignments • Loan Cars Available  
Tractor & Farm Machinery Repairs • WOF Inspections

**southfuels**

**Ph 543 2707**  
**Main Road, Upper Mouere**



**Water Boy**  
**Household Water**

**Bulk Supplier**

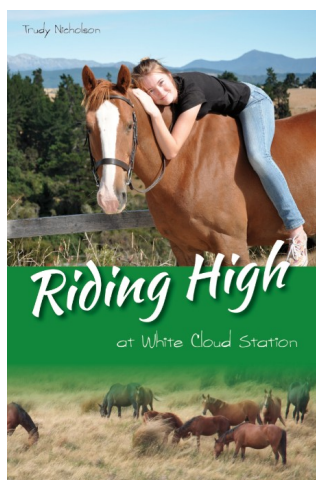
**Alan Archibald**

**Ph 035432401 or 0212737666**

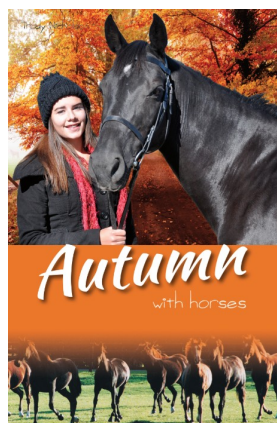
[mahana.tasman@hotmail.com](mailto:mahana.tasman@hotmail.com)



Local girls Ella Doty and Grace Needham were selected from 34 models to pose on Trudy Nicholson's White Cloud Station book covers. 'It was really hard choosing my models, all of the girls were fabulous, but selection was ultimately based on their likeness to the earlier books' models...' Trudy states. 'I traveled to Takaka to photograph my third model, Laila Balzer who was perfect for my main character Suzy. All of my girls posed just like top model professionals, they were wonderful!'




The series was originally published by Penguin in 2009, and is being re-launched by a Nelson publisher, CP Books, this April, with the long awaited Book 7; *Winter with Horses*.




Trudy says she is thrilled to have local girls and horses on her book covers, and was surprised at the response when she advertised for models to photograph. 'Grace and Ella have been friends since pre-school and their connection became apparent during the photo shoot,' says Trudy. 'It worked really well, as the characters in my books are the best of friends...'

There's a club for horse mad girls to join:

[www.whitecloudstation.weebly.com](http://www.whitecloudstation.weebly.com)



**HIGH PLACES**  
**www.highplaces.co.nz**



**HOLA SOUTH AMERICA!**

**Inca Trail and Vilcanota Trek**  
**Alpamayo Trek - Cordillera Blanca**  
**Ecuador - Andes, Amazon and Galapagos**

Join **BOB LANCASTER**

**Three great trips!**

July and August 2014

**LOCAL DEPARTURES - LOCALS' PRICES**

also **Iceland - Greenland - Mt Kenya**  
**Kilimanjaro - Bhutan - Nepal**

**Tel 03 540 3208 [treks@highplaces.co.nz](mailto:treks@highplaces.co.nz)**



**andrew Eggers**  
builders limited

e: [eggertsbuid@ts.co.nz](mailto:eggertsbuid@ts.co.nz)  
m: 027 446 0739  
t: 03 543 2757  
f: 03 543 2823

76 martin road  
rd2 upper mouere  
nelson 7175

**Call Andrew on**  
**027 4460 739**

**Specialists in renovation work**

[www.andreweggertsbuiders.co.nz](http://www.andreweggertsbuiders.co.nz)




Member





## WORKING AT THE UPPER MOUTERE STORE

I was 15 years old when I started working at the store—November 1948-May 1953. My wages were 20 shillings a week then went up to 2 pounds after 6 months. The manager was Mr Brydon Harvey and assistants were Bill Scott and Frank Bensemann.

There was no electric power, only a generator which was used to light up the store in the evenings. The petrol pumps and bacon slice were operated by hand. Electricity came in the early 1950s along with electric petrol pumps, bacon slicer and fridge cabinet, so then we sold ice creams. We also sold footwear, hardware

and many household

items. There was a lot of weighing up to be done, as we bagged up the dried fruit, biscuits, sugar and flour. Having a big bulk shed meant there was also wheat and barley to weigh up into 1/2 bushel and one bushels, potatoes into 14lbs and 28 lb bags. A wooden key which held malt vinegar to be siphoned out into 1/2 gallon flagons. In the van and car shed was a 44 gallon drum of kerosene, I had to wash bottles and fill them for sale.

Hop picking time was busy. The hop pickers arrived by Newman's bus early March on a Friday evening about 9.30pm. The growers would be there to pick them up and bring them into the store for groceries.



I learnt to drive the van and when Bill Scott was on holiday I did the deliveries. I went with him first to know where to go : Monday: Supplejack Valley, Old House Road and Mildura. Tuesday: Neudorf, blackbird Valley and Rose-dale. Wednesday: Sunrise Valley. Thursday: Mahana. Friday; Mapua and Ruby Bay. The customers would be rung the day before or the same morning for their orders. Then there was rationing for sugar, tea, butter and petrol so there were coupons to deal with. Most of the groceries were charged up to the customer and there were carbon copy docket books. At the end of the month the accounts were hand written up by Mr and Mrs Harvey. During the deliveries some of the customers gave you eggs and home made butter to be credited to their monthly account. We carried a large egg crate in the van to put the eggs in.



Janet Harvey and the store van.



Kelvin Gerrish outside the Upper Moutere Store 1951

## PAYLESS ELECTRICAL SERVICES

professional service guaranteed



FREE CALL

**0800 772 794**

MOBILE

**021 277 2794**

*Free Quotes*

*No Job too Small*

w: [paylesselectricalservices.co.nz](http://paylesselectricalservices.co.nz)

e: [paylesselectricalservices@gmail.com](mailto:paylesselectricalservices@gmail.com)

### DOMESTIC

- New build homes and renovations
- Rewiring, switchboard upgrades
- Lighting, power points, heating
- Home entertainment installations
- LED lighting specialist
- Electrical Safety Checks

### COMMERCIAL

- Building maintenance and fault finding
- Complete fit out of new shops, offices, showrooms and warehouses
- Lighting and power design
- Data wiring
- Electrical Safety Checks



Kelvin Gerrish kindly supplied the photos and content for this piece. If any of this rings a bell, or you have something about the Moutere's past you would like to share, please contact us via the email address or post to The Grapevine c/- Upper Moutere Store, Main Road Upper Moutere.



### Mouere Community Youth Happenings

Hope you all enjoyed the holidays. We've got some awesome events coming up for the winter months. But right now, let's look at what's happening in May.

Bubbles & Cupcakes with "Pebbles and Posies" starts the third Monday of the term – 19 May. \$25 for four Mondays, 3:10pm-4:30pm, at the church hall. Numbers are limited. Contact Abbey to book a place, 5432 949 or 027 2434364.

Boys! Boys' club begins Wednesday 21 May! Build your own billy cart AND build a miniature drag car using recycled electronics. Boys Club is for year 5 up and will run from 3:30-5pm, for 6 weeks. Contact Andy to book a place, 5432 949, or 021 2245178.

### Friday Night Youth (Year7-13) \$2

Friday 9 May See it Spot it

Friday 16 May Pinch & A Punch for the 2<sup>nd</sup> of the month

Friday 23 May Pizza Party

Friday 30 May Movie Night

### Senior Youth (Year 9 +)

Event just for you guys and girls COMING SOON!

**Community Youth Workers Andy & Abbey Bensemann**

Andy 021 2245178 Abbey 027 2434364

Home 543 2949

MOUTERE COMMUNITY YOUTH TRUST

Te Puawai Tanga O Rangatahi



### **The Mouere Community Youth Trust AGM**

will be held at **7pm, 17th June, 2014** at

**St Paul's Lutheran Community Church  
Sunday School Hall.**

We invite all our supporters and anyone who is interested to hear about the work of our Youth Workers to attend.



**Martin Douglass**

P: 03 543 2322

1969 Mouere Highway, RD 2, Upper Mouere 7175.

[martin@martinsmilling.co.nz](mailto:martin@martinsmilling.co.nz)

[www.martinsmilling.co.nz](http://www.martinsmilling.co.nz)

Mobile band saw milling.  
using Woodmizer thin kerf technology.  
Hydraulic handling for logs up to 6m long & 800mm diameter.  
Large timber & fitches resawn.  
Poles squared.  
Registered to cut native.

**Wood-Mizer**

Using Woodmizer thin kerf technology.  
Mobile Band Saw Milling

**Low Waste • Accurate • Economical**

**We can help your  
business grow**



**PITT & MOORE**  
LAWYERS AND NOTARIES PUBLIC

Nelson 03 548 8349  
Richmond 03 543 9090  
[www.pittandmoore.co.nz](http://www.pittandmoore.co.nz)  
Lowdick



## Taste Tasman 2014 Tasman School Sunday 04 May, 11am - 4pm

After a 4 year hiatus, Taste Tasman returns as a late autumn outdoor soiree on Sunday 4th of May between 11am and 4pm.

The inaugural event won the Trustpower Community Supreme Award for the Nelson Tasman region in 2006, after a group of parents from Tasman School pulled together, school and community to raise funds for local projects. The event ran successfully again in 2008 and 2010. The beneficiaries of this year's event will be Tasman School and Tasman Area Community Assn. As always the event will be accessible for all, with a \$2.00 entry at the gate.

The traditional Tastes of Tasman will be celebrated once again with local food & beverages, along with entertainment.

We will also get a taste of regional fashion with a winter range fashion show from ICE the new Trafalgar Street store of Nelson designer Donna Robertson. Donna has showcased her designs in the Nelson region for over 30 years and it will be wonderful to have her back with us for another exciting showing of her beautiful garments.



**tastetasman**  
*Get the flavour!*

**Tasman School Sunday 4th May, 11am-4pm**  
RAINY DAY ALTERNATE DATE 11<sup>TH</sup> MAY

FANTASTIC LOCAL FOOD & PRODUCE,  
COTTAGE INDUSTRY, ART & CRAFT,  
WINE & BEVERAGE, LIVE MUSIC,  
ENTERTAINMENT, KIDS ACTIVITIES,  
STALLS AND MUCH MORE...

Parking Tasman Reserve  
*Enjoy a family day out!*

**\$2 entry**

[www.tastetasman.co.nz](http://www.tastetasman.co.nz)

THE BREEZE, THE LEADER GROUP, MORE FM, tasman school

## ☼ QUILT SHOW ☼

*Fri, Sat, Sun - MAY 16,17,18*

Motueka Quilting Connection

**Motueka Recreation Centre, Old Wharf Road**

Venue request – No stiletto heels please

**Daily 10am-4pm - admission \$5 incl. Refreshments**

*Come and see the wonderful quilts on display. including  
The Hoffman Challenge Quilts, Colours of NZ Challenge  
Members challenge, Merchant Mall, Raffles*

Part proceeds from Raffle donated to  
Nelson Tasman Hospice and Women's Refuge



## MOTUEKA QUILTING CON- NECTION QUILT SHOW 2014

is again being held at the Motueka Recreation Centre, Old Wharf Road. The show runs over three days – Friday, Saturday, Sunday, 16, 17, 18 May and this fabulous annual event again showcases our members' work and from quilters around New Zealand. (Venue Management request – No stiletto heels please).

The exhibits will include quilts of all shapes and sizes, themes and colours to keep you interested and the old favourite – The MQC Members Challenge. We will also have The Hoffman Challenge Quilts – always spectacular and The Nutex and NZ Quilter 'Colours of NZ' Challenge Quilts from quilters around New Zealand. You will be amazed.

As well as enjoying the stimulating exhibits, the public will have a chance to vote for their favourite quilt, along with the club challenge quilts – the theme this year is 'Light'.

The show runs from 10 am to 4 pm each day. Admission is \$5 which includes refreshments. Raffle first prize is a Bernette sewing machine, kindly donated by Bernina Sewing Centre, Nelson who will have a stand at the show to help with any machine issues. There will also be an interesting Merchants Mall which will include fabrics, accessories and jewellery.

This year part proceeds of the raffle will be supporting the Nelson Tasman Hospice and Women's Refuge.



## Aerobics classes on Friday nights

Fun, low-impact class, working on core strength and balance, with music you can sing along to. 45 minutes of toning and fat burning followed by an all over body stretch, then an optional 10 minutes of stomach crunching.

Bring a towel or yoga mat for this please.  
Run by a qualified fitness and aerobics instructor.  
No need to book, just turn up on the night.



**Fridays 6pm – 7pm \$5 a session At the Moutere Hills Community Centre.**

Don't think of it as exercise, more a case of meeting up with friends and dancing the night away.



Opening session on **Friday 9<sup>th</sup> May** is **free** and the bar will be open afterwards to buy drinks, so bring some friends and join the fun.

For more information contact Sam on: 543 2512



**WANTED: Playground equipment**, anything considered. Especially after a playhouse (not plastic), doesn't have to be fancy, just child friendly and an old small wooden boat for our playground, that our boys can spend hours 'at sea' in.

**Old farm letterboxes**, metal with flag. Any condition considered..

Telephone: Mel on 5433670

## MOUTERE MASSAGE ROOMS

**Sports, Deep Tissue, Injury Repair, Bowen Therapy, Foot Reflexology, Pregnancy Massage.**

- \* **Qualified & Professional**
- \* **Gift Vouchers**
- \* **Monthly Specials**
- \* **Affordable Rates**
- \* **Avail. Saturdays & Evenings**
- \* **Treating neck & back pain, Sciatica, Sports Injury, Pre & Post Comp. sessions.**

**Ph 03 526 7107 for an appointment.**

## KIDZ KLUB AFTER 3 OSCAR ACTIVITY PROGRAMMES

**'WHERE KIDS HAVE FUN'**

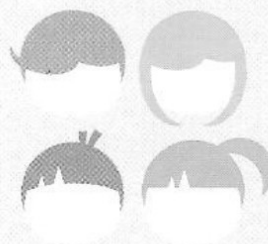


We provide CYF approved quality OSCAR after school and school holiday programmes in Mapua and an after school programme in Upper Moutere.

For more information contact Cindus

03 543 2033 / 027 358 7233

[Kidzklubbafter3@gmail.com](mailto:Kidzklubbafter3@gmail.com)



**Country Cuts  
Hairdressing**

**Karen Rhind**  
owner/operator

14 Kelling Road  
Upper Moutere 7175  
(03) 5432297

[k.j.rhind@xtra.co.nz](mailto:k.j.rhind@xtra.co.nz)

**Grapevine circulation is 1300 copies.** This issue has been constructed by volunteers: Tanya Doty, Beverley Sellers, Sharon Beuke, Avril Stephens, Hilary Williams and Heather Eggers. Views expressed are not necessarily those of the voluntary editors and no responsibility is taken!

The Social Group meets at the Sunday School Hall (Upper Moutere Lutheran Church) on Thursday afternoons at 1.30pm each fortnight.

Join in games and cards. Enjoy our afternoon of fun and fellowship. All welcome. For 2014 start date **contact Brian or Lois Eggers ph 5432 871.**



**Labour**

**Hon Damien  
O'CONNOR**

**MP for West Coast - Tasman**

**Freephone 0800 Damien (0800 326 436)**  
[damien.o'connor@parliament.govt.nz](mailto:damien.o'connor@parliament.govt.nz)  
[facebook.com/damienoconnormp](https://www.facebook.com/damienoconnormp)