

The Grapevine

MOUTERE HILLS COMMUNITY NEWS

Inside this issue:

- 2 Grapevine Information
Grapevine Says
Rangers Rugby Quiz
- 3 Upper Moutere School Quiz
- 4 Sarau Winter Sale Success
- 5 Freshwater - good, bad, future
- 6 Network Tasman Trust - grants
- 7 Community Noticeboard
Moutere Fire Brigade
Motueka Coastal Bus
- 9 Moutere Hills Community Cntr.
- 11 Rethinking Home
- 13 Mapua Bowls
Tasman Art Awards
- 15 Whenua Iti
- 17 Your real estate Journey
- 19 Philosophy of Steiner Schools
- 21 Vet Helpline - Dentistry
- 22 Trades & Professional LIST

Special points of interest:

The Motueka Coastal bus comes to the Moutere - pg 6 & 7

Thank you for reading the Grapevine and for supporting the advertisers.

Gold coin donation to Moutere Motors, Tasteology or Moutere Store appreciated.

FREE DELIVERY



Jeanine Harte amongst her 'free lemons'

Local treasure

The Grapevine talked to Jeanine Harte who has recently sold her bustling wee business in the Moutere township.

What led Jeanine to become the much loved proprietor of Moutere Takeaways for almost 12 years? After many years of working in the district at kitchen work, bar work, nurse aiding and vet nursing, Jeanine decided to try her hand at her own business and took over Moutere Takeaways in December 2011. In the 11+ years the business continuously grew - burger orders went from 5 a week to 50-60 a night. What great burger eaters we must be in the Moutere....or is it just that Jeanine and her staff made great burgers?

Working 5 nights a week Jeanine became much loved by her patrons and by the many many young folk she employed and trained through her time there. She loved the challenge of the frantically busy nights and instilled that same love in her staff - treating

every customer as special, and always going that extra mile to ensure they received the best fish and chips (or burger) possible. Some of you will remember that if you were a special 'regular' you might have received a bag with a smiley face on it, or a few extra pieces of fish to help you get through the evening.

Jeanine gives credit to those in the community who helped her develop her business and management skills - Dave and Sue Tongue - her Mahana neighbours who were a "massive help" at the start, and Judy and Mike Gill who trained her in fryer use when she worked for them at the Mapua Tavern. She has also appreciated the help of her partner Dave who gave endless time outside his own work helping out, and daughter Melissa who turned up on the days she was short staffed, and of course her fabulous staff. Those who gave her fresh lemons to add to her own to give to customers, and

cont. pg3

PLACING AN ADVERTISEMENT

Thank you for advertising in the Grapevine—you help us cover the cost of producing and delivering this free community newsletter each month.

The deadline for each issue is the **15th of the month**. Please email your print-ready advert (JPG, PDF, or PNG preferable) to: umograpevine@protonmail.com

The following prices apply for advertising:

- ∞ Births, marriages, deaths, group or giveaway notices on the community noticeboard (25 words): **FREE**
- ∞ 1/16 pg portrait 44 x 55mm: **\$7**
- ∞ 1/8 pg landscape 90 x 55:
 / portrait 44 x 127: **\$14**
- ∞ 1/4 pg portrait 90 x 127:
 / landscape 185 x 55:
 / landscape 136 x 67: **\$28**
- ∞ 3/8 pg* 136 x 127: **\$42**
 *if available - limited listing.
- ∞ 1/2 pg** landscape 185 x 127:
 **limited to events, one-offs and community notices.

To make payment please email:

umograpevineinvoices@gmail.com

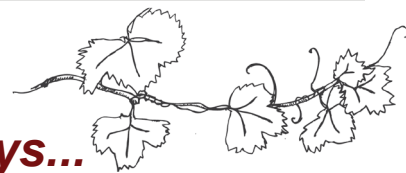
Sending us articles of interest

We warmly welcome contributions to The Grapevine from all residents in the Moutere and Tasman regions. You make the newsletter an interesting read! There is no cost for having your articles published if you are telling the community about a fundraising venture. However we do appreciate a donation from commercial ventures to help us cover our printing costs—see email address above to get bank details.

Archived coloured copies of the Grapevine are available at www.mouterehills.org.nz/community/the-grapevine courtesy of the Moutere Hills Community Centre staff. Grapevine circulation is approximately 1400 copies. This issue has been constructed by volunteers: Jenny Leith, Sharon Beuke, Bessie Adie, Kirsty Vanderwerff and Sue McGregor.

Disclaimer

Views expressed in articles in The Grapevine are not necessarily those of The Grapevine team or its editor. While every effort has been made to ensure the accuracy of the information included in this publication, The Grapevine takes no responsibility for errors or omissions or for any consequences of reliance on this information. All adverts are required to present a name or contact details so that people can respond directly should they have any queries or concerns. Publication of advertising material implies no endorsement of either a product or a service.



Grapevine Says...

What an amazing weekend we all had with the Sarau Winter Sale. Whether you helped out at the working bees, or turned up during the weekend to search for bargains – thank you!

Perhaps it is winter, or perhaps it is because we are aging.... but as I read in the paper of the recent death of Jimu Grimmett I have been reflecting on what a colourful and creative family the Grimmetts were when they lived amongst us in Roses Road, and how things change over years. Some of you will recall Jimu at community events including the Sarau Festival – dressed as a clown, moving amongst the crowds and bringing laughter to young and old alike. Jimu's parents too were colourful – his mother was an active part of Women's Division and other local groups, and his father was instantly recognisable with his broad accent and his selection of feather adorned hats.

How important it is to value everyone who makes this community an interesting and fun place to live.

Thank you to everyone who has contributed articles and notices this month - what a rich edition!

Enquiries: umograpevine@protonmail.com

RANGERS RUGBY

ANNUAL QUIZ NIGHT!

Grab a team and come along for a great night of fun. Everyone leaves with a prize and a yummy supper is provided.

FRIDAY 11TH AUGUST

\$20 ENTRY

7PM

MOUTERE HILLS COMMUNITY CENTRE

*****TABLE BOOKINGS ESSENTIAL*****

those who became 'regulars'.

I asked Jeanine what her day looked like when she was running the Takeaways – she would go up at 6am to clean the fryers and ensure everything was in order, head home to take care of her farm and 5 horses and perhaps even fit in a ride before heading back at 4pm to open up and keep us all delighted with her chippy. How has it been in the two weeks since she finished up – well – she and partner Dave have managed to go to a movie, visit friends and meet others at the Moutere Inn and even go away for a weekend! Freedoms she has not experienced for a while.

Jeanine was delighted to be such an integral part of the Moutere life – especially the interaction with the young folk she saw grow from primary to college age and then back to work with her. She had a special relationship with Old Bob whom some of you will

remember walking the district. He would regularly come by for his half scoop and piece of fish but sometimes leave before it was cooked and she would have to run down the road with it so he arrived home with his meal. Outside of the Moutere she had regular patrons come by from Richmond, Tapawera, Mapua and Motueka. One of the memorable evenings was when a busload of French girls arrived from a backpackers in Nelson – they had been told this was the place to come for their fish and chips!

In the early days some of the youth group boys would come by and line up at the counter just to watch her cook and have a chat. Not your usual youth group activity ... only in the Moutere, eh?

So what now for Jeanine – time to indulge her passions of horse-riding and eventing, walking with her massive

dog Bill and gardening. There is a thought of selling up and moving south so she, Dave and Melissa (a civil engineer with Fulton Hogan) can get more land and have more horses, but meantime there are two aging Mothers in Nelson requiring their care and attention, a new evening job to be found and enjoyed, and time with family and friends ahead. Time to enjoy the community from the other side of the counter.

DRUM LESSONS

Here in Upper Moutere Area

All ages

\$30/half hour

\$50/hour

Call/text Dave 022 655 6065

Upper Moutere
School

QUIZ NIGHT

SATURDAY 9TH SEPTEMBER

Funds raised to heat the pool, and for school camp



Cash bar



Games & Raffles



Platters & Fries to buy



Silent Auction

TIME: 6:30 pm

WHERE: Moutere Hills Community Centre

COST: \$160 per table, \$20 per ticket

Hot drinks, cake and nibbles included

TEAMS: Max. 8 people

TICKETS AVAILABLE NOW ★ PHONE SAREE ON 03 543 2798



What a great Sarau Winter Sale we all had



Soup makers extraordinaire



Almost 11am!



Clothes



Books

What an amazing weekend - I do hope those of you who joined us enjoyed your time?

Whether you distributed posters, carried books, made soup, volunteered in the kitchen, helped sort and sell books or clothing, baked, stimulated social media on our behalf, or have taken bags and boxes to deliver to your favourite op shop, you did a fine job. Thank you, thank you, thank you. Stay safe for the balance of 2023 and we look forward to meeting with you again in 2024.



Octavia Acappella

Back to rent in Golden Bay

"Wainui Getaway"

*3-bedrm comfortable bach

* Take own linen

For bookings and/or
more information

email Sharon on:

s.beuke@gmail.com

or text 027 432 8145

STONESCAPE

Garden Supplies



Winter is here.

Pea Straw \$17.50 a bale

Blood and Bone \$14 a 5kg bag

Firewood | Pine - \$60 per scoop

AP20 | fix up the pot holes | \$34 a scoop

plus many more other products

Check out our yard @ 99 King Edward Street

Or contact us for more information | 03 528 6344



Freshwater

The good, the bad, the future



Lan Pham

Join Lan Pham (Former Environment Canterbury Councillor, Freshwater Ecologist) to hear about the wonders of our native fish and the latest on the state of Aotearoa's freshwater; the implications for both human health and the health of our environment; and what is happening (or not happening) nationally, internationally and locally to ensure we can have healthy, safe, drinking water and freshwater ecosystems for us, our kids and generations to come. Lan Pham says "Clean, healthy freshwater is absolutely critical to the health of not only our environment, but ourselves."

The evening will be complemented by a panel with Annette Litherland, Regional Coordinator at NZ Landcare Trust and closely involved in the local Motueka and Moutere Catchment Collectives and Barbara Nicholas, a local expert in community engagement. After a short introduction

they will exchange their knowledge and take part in answering questions from the public. The meeting will be MC'd by Steve Richard, owner of the Jester House, well known in the area, and an active member of the Moutere Catchment Collective. Although Lan is also a Green Party candidate, this event is a non-political event with our freshwater environment as the theme of the night.

Lan Pham's background is in Freshwater Ecology (MSc) where it was Aotearoa's quirky endangered native fish that first got her involved in tricky intergenerational issues like freshwater pollution and climate change. Over the last 15 years Lan has worked with community groups, schools, farmers, iwi and government agencies across Southland, Otago and Canterbury on grass-roots freshwater restoration projects as a freshwater ranger for DOC and as founder and trustee of Working Waters Trust.

Lan has served the last 6 years in Local Government as a Regional Councillor on Environment Canterbury from 2016 - 2022 where she championed action for nature, climate and people. Her initial election campaign for Environment Canterbury in 2016 was launched while on a year-long placement on Raoul Island in the Kermadecs – a five-day, 1000km boat ride away.

Looking at the state of our freshwater environment, Lan says: “Getting ourselves out of this mess is about leaving a better future for our kids and grandkids. We all have a part to play in

this. We can all be part of this change through our votes, through using our voice, through taking action.”

PUBLIC MEETING:

7-9pm Mon 14th August
Moutere Hills Community Centre, 1539 Moutere Highway,
 Upper Moutere



GRANTS OPEN

The Peter Malone Community Grants Scheme is now open for applications

Applications are now open for grant applications from individuals or organisations whose members are predominantly electricity consumers in the Network Tasman district.

Online applications can be completed at www.networktasmantrustgrants.org.nz or you can download and complete a hardcopy application form and post to P.O. Box 3164, Richmond 7050. Details of eligibility criteria are available online.

Applications must be received by **FRIDAY 25 AUGUST 2023, 5.00 PM.**



Starting on Tuesday 1 August the **Motueka Coastal Bus** will travel via Main Road Lower Moutere and the **Moutere Highway** from Motueka to Richmond -
*Only \$12 return/ \$6 one way

*BOOKINGS
ESSENTIAL
MOTUEKA ISITE
03 528 6543



TIMETABLE:

	Depart/Return
Departs Motueka iSite:	9.30am/3.00pm
Lower Moutere Store:	9.40am/2.50pm
Riverside:	9.43am/2.49pm
Flaxmore Road:	9.50am/2.42pm
Moutere Hills Recreation Centre:	9.55am/2.40pm
Upper Moutere General Store:	9.57am/2.35pm
TDC - Queen St. Richmond:	10.20am/2.13pm
Sundial Square Richmond:	10.22am/2.10pm
Aquatic Centre:	10.30am/2.00pm

(Please note: times are approximate and may vary, *other stops by arrangement when booking)

GOOD NEWS...



COMMUNITY
TRANSPORT TRUST
Nelson Tasman

Community Noticeboard

JUSTICE OF THE PEACE Upper Moutere. Contact Cathy Ellis 021 158 2890

UPPER MOUTERE PLAYGROUP we meet every Friday 10am - 12pm at the Moutere Hills Community Centre, all families welcome. Contact Karen 021 252 2657

NEED A LIFT? Māpua Willing Wheels Volunteer Drivers, transport around Māpua, Motueka, Richmond, Nelson (no airport runs). Tel 022 6822 373 to book / mapuawheels@gmail.com, 24hrs notice required.

MOTUEKA COASTAL BUS operates Tuesdays & Thursdays, leaves Motueka i-SITE via Upper Moutere, to Richmond CBD & Pool. Pre-booking essential Motueka i-SITE 03 528 6543.

DOVEDALE COMMUNITY MARKET Buy, sell, swap, giveaway. 10am-12noon every 2nd Sunday monthly. Enquires: margicreed@gmail.com

KINDLING FOR SALE Hi, we are 3 brothers from Tasman selling banana boxes of dry kindling for \$15. Contact Sam 02108221110 to order.

CRAFT & CONNECT

Would you like to join our group
for a social afternoon?

Crafting is not obligatory, you can enjoy a cuppa/glass with lovely ladies at the Moutere Pub where we meet every Thursday from 1.30 – 3.30 pm.

For details email reneate@fairvalley.net

Moutere Volunteer Fire Brigade

Callouts for the month of June 2023

- 2/6 Car off road, Old Coach Road/Moutere Highway
- 4/6 House fire, Dovedale Road
- 11/6 Car rolled down bank, Thorpe-Orinoco Road
- 12/6 Car over bank, Dovedale Road
- 23/6 Car down bank, Moutere Hill

Motueka Coastal Bus via the Moutere Highway

Our Trust has been operating the Motueka Coastal Bus from Motueka to Richmond along the Coastal Highway. From 1 August 2023 they will reroute and travel though the Moutere Valley so as not to conflict with the introduction of the Coastal route eBus system by the Tasman District Council.

We are a charitable trust and we aim to provide affordable public transport and reduce car dependence and carbon creation.

The fare is **\$12 return and \$6 one way** from any stop, or between any stops.

Bookings are essential through the Motueka iSite (**03 528 6543**) and at booking time it is important to indicate which stop you would like to be picked up at. Stops can be made 'on demand' along the route. A great opportunity for rural residents to 'park and ride' by driving to the nearest intersection with the bus route, leaving their car and 'jumping on board'.



We pride ourselves on being affordable, flexible and friendly.

The service will run **every Tuesday and Thursday** starting on Tuesday 1 August.

We look forward to meeting the public transport needs of the Motueka Hills community.



TBSL tasman bay
SCAFFOLDING LTD

**THE ONLY
MOTUEKA BASED
SCAFFOLDING
COMPANY**

Give us a call **021 436 832**
or email tasmanbayscaffolding@gmail.com
today to discuss all your scaffold requirements

scaffolding hire for all budgets

Providing gentle
guidance when you
need it most.



**Simplicity
Funerals**

Simply respectful. Simply affordable.



Anna Loach
Manager / Funeral Director
Dip FD Reg. FDANZ

**NELSON & TASMAN WIDE,
WE'RE PART OF YOUR COMMUNITY**

Phone 03 929 5145 | 276b Queen Street, Richmond
nelson.simplicity.co.nz



**SUN
ELECTRICAL**

Phone: **03 540 2367**
www.sunelectrical.co.nz
Troy Richards
022 080 4751

9 Warren Place,
Mapua, Nelson 7005
e: sunelectrical@xtra.co.nz

Domestic
Heatpumps
Commercial
Caravan EWOFs & Electrical

Are you prepared for winter?

Do you need a new Heat Pump installed?

Does your existing Heat Pump need a service?

Or do you just need a electrical job done?

Then give Sun Electrical a call

No obligation – Free quotes.

Proudly supplying & Installing Daikin Heat Pumps.

Check out our website for options.

www.sunelectrical.co.nz



The World Leading Heat Pump Company

Heine's

Cartage and Contractors

We have trucks, excavators, a dozer,
a grader, and the expertise to do all your
cartage, drainage, building site &
foundation, roading, and subdivision work.



40 years of local knowledge



and experience in the transport and
contracting industry

Phone Wayne on 03 5432 788

027 430 2725

Or call in at our workshop and office at

1455 Moutere Highway

(by the firestation)

UPPER MOUTERE

MOUTERE HILLS COMMUNITY CENTRE



Dear Community

We are excited to announce that we have received funding from Lottery Facilities, Pub Charity and Network Tasman Trust to install outdoor court lights and create a community recreation space with a free to use BBQ. This project should be starting in the next couple of months but we will keep you informed on progress. Thanks for your continued support.

Kind Regards Katrina, Josh, Keith and Cindus

Fitness Classes

Re-Activate with Josh

Mondays 11:15am - 12:00pm

Thursdays 8:30 - 9:15am

Box n Burn with Josh

Mondays 7:00 - 7:45pm

Stretch and Flex with Vicki

Tuesdays 9:30 - 10:15am

Thursdays 9:30 - 10:15am

Pilates with Kris

Tuesdays 6:00 - 6:45pm

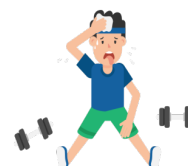
Wednesdays 9:00 - 9:45am

MetaPro Hybrid

Wednesdays 6:00 - 7:00pm

Metafit/Core with Cindus

Friday 9:00 - 9:45am



All classes are FREE for Fitness Centre members or \$10 casual. Concession cards available - \$60 for 10 classes.

Social Futsal

Come along and join Josh for this fun indoor version of the game. Includes skills, drills and games.



Tuesdays 4:00pm – 5:15pm

Only \$2 per person per session



PRODIGY DANCE

Amy-Rose offers a wide range of age appropriate classes to suit Pre-schoolers right up to Year 13's

On Wednesdays and Thursdays

To book contact Amy-Rose on 021 220 7299



Pre-School Mash Up

Music, Movement and Motor Skills

This is a fun, interactive class using gymnastics equipment to help build gross and fine motor skills, strength, balance, agility, and co-ordination.

Mondays starting 24th July

12:30pm – 1:00pm Under 2's

2:00pm – 2:45pm 2 – 4 year olds

\$30 for 8 weeks

Limited spaces, contact Katrina on to book.



Postnatal Exercise

8 week program

Mouere Hills

Starting 10th August
at 1pm

Baby welcome and safe to join

\$25 per week

gennaviefitness@gmail.com



Mouere Hills Community Centre
COUNTRY
Christmas Market

2nd December 10:30am – 3:00pm



Stall bookings are now open for general and food vendors.

Visit www.mouerehills.org.nz to book your site.

Spaces are limited so get in early to secure your site at this fantastic, family day out!

Phone: 543 2516

Email: enquiries@mouerehills.org.nz

Website: www.mouerehills.org.nz





Pre-loved
Jacqui's
And More

Quality pre-loved womans clothing.
Top labels including Augustine,
Trelise Cooper, Ketzke, Jane Daniels,
WORLD to name a few...

Sustainable shopping in a beautiful setting

TASTEOLGY / THE OLD POST OFFICE
1381 Moutere Highway, Upper Moutere | ph. 027 346 4071
WINTER HOURS: Mon-Tue closed | OPEN Wed-Sun 11-3pm

Whole Barley
25 kg bags
\$20 per bag



Phone 021 454 731 or 03 526 7004

Admin and Accounting

Bookkeeping | Tax Returns | Understand | Grow

*We believe in helping you make intentional decisions and
applying clarity and purpose to your business actions*

Diane Maisey
Phone 027 444 6387
www.adminandaccounting.co.nz





NTC
Nelson & Tasman
Construction

ALL BUILDING WORK

 LARGE OR SMALL 

NEW BUILDS • SHEDS • REPAIRS
ALTERATIONS
DESIGN & PLANNING SERVICE
DIGGER & DRIVER HIRE
EXPERIENCED LOCAL
LBP BUILDERS

0211 408077
ntconstruction@xtra.co.nz
www.nelsonandtasman.co.nz



**Hardy
Landscapes**

**Water Features
Paving
Rock Work
Irrigation
General Landscaping**

Michael Hardy
Ph: 021 443 908
A/H: 03 543 2555

Rethinking home

Innovative approaches to transforming housing options in Nelson Tasman

'Local Matters' is hosting a meeting on housing and urban development in Nelson/Tasman on Wednesday 16 August at Māpua Hall.

Members of NelsonTasman2050, a local housing and urban development think tank, will discuss the housing challenges that we face in our region. Our speakers will present initiatives and innovative design approaches that better respond to the region's environmental and social needs.

They will look at the pressures placed on the overburdened housing sector and explore ways that we can build more sustainably, affordably and thoughtfully within our local communities. Speakers on the night are NelsonTasman2050 members Magdalena Garbarczyk and William Samuels, both architects, and Jan Heijs, a civil engineer.

The Nelson/Tasman region ranks in the top five most expensive in the country for housing affordability. Jan Heijs says 'our region's residential growth has been unequally distributed to fringe suburbs and outlying towns and villages, while living more centrally is out of reach for most. Willam Samuels adds 'urban intensification has been misguided as uncoordinated



backyard infill development. This has resulted in a lack of housing choice, poor environmental qualities, rising costs of living and rising greenhouse gas emissions.'

This trend needs to be re-balanced to enable more affordable housing, reduce our collective carbon footprint and to facilitate quality urban environments with a variety of housing options, enabling walking, cycling and public transport as real mobility choices.

Featuring an overview of the advocacy work that NelsonTasman2050 is undertaking, along with presentations from two local architectural

practitioners on their low cost, sustainable designs, this event is designed to generate discussion and spark ideas about what type of housing we want and what is appropriate for our local context.

RETHINKING HOME:

7.30pm Wed 16th August
Māpua Hall

Door sales only: \$10 ticket
Students with ID free
Supper included

This is a Local Matters event, organised by the Motueka Branch of the Green Party of Aotearoa NZ

TAG
CONSTRUCTION



021 866 740

- ✓ NEW BUILDS
- ✓ DESIGN & BUILD
- ✓ RENOVATION
- ✓ COMMERCIAL



green world **health**
& Lifestyle

Sole Supplier of
Dr. Hauschka
Products
in Motueka.



Open 7 Days



177 High Street, Motueka

Ph: 03 528 7262

E: greenworldhealthandlifestyle@gmail.com



THE NURSERY

35 HORTON RD, TASMAN 7175

NATIVES, FERNS, EXOTICS

Hours: Wed-Fri 830a-4p Sat 10a-3p

Call Jo: 021 122 3056

FB @ Tasman Bay Estates Nursery

Website @ Thenursery.nz

Horse Cover & Gear Repairs

Horse Cover Washing

Prompt Service

Good Rates

Contact Lawrie

1350 Moutere Highway

Ph: 03 543 2234

021 208 2192



**Tasman Bay
Chiropractic**

Keeping you in the game since 2002

Monday-Saturday

03 544 4554

64 Oxford St Richmond


Three chiropractors available

Referrals, families and
all new patients welcome

Visit our website or call for
more information

tasmanbaychiropractic.co.nz



Find us on 



**Dorothea
Tebbenhoff**
Acupuncture



Licensed Acupuncturist

MAcNZ, Acc Provider

Re-located to Motopolis building

31 Wallace St, Motueka

027 214 6444

www.tasmanacupuncture.co.nz

News from Mapua Bowls Club

THE WRITE BIAS

The Annual General Meeting held on Saturday 17th June was very well attended. The new Board was elected and, for a change, there were no contentious issues to be discussed. Instead members were very happy to share an afternoon tea and catch up with their friends.

Board members are:

President, Debbie Win; Vice President, Warren Keith; Secretary, Di Blanchet; Treasurer, Karen Clark; Bar Manager, Denzil Stephenson; Greenkeeper, Ian Benbow; Communications, Sue England; Sponsorship, Ian Sullivan
Club maintenance, fundraising and planning for next season all continue quietly in preparation for opening at the end of September.

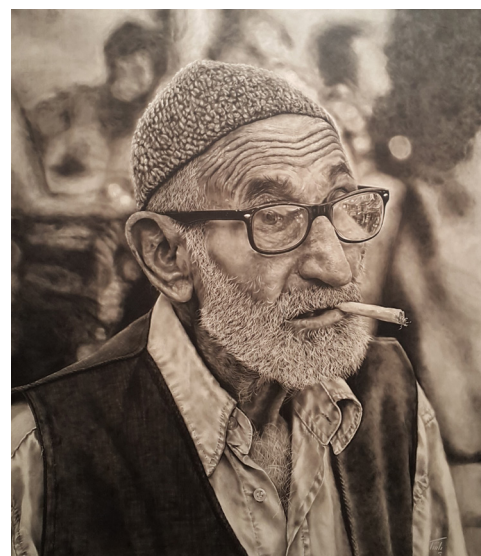
We are very pleased to welcome the local Friendship Group to our club. Their members will be joining some of ours to use the indoor carpet bowls on the third and fourth Mondays of every month commencing at 2 p.m. on Monday 21st August. If anyone would like to give it a go we would be delighted to see them. It is very relaxed, \$3 per session for carpet bowls, tea and biscuits and friendship. For more information please contact Val Roche (540 3685) or me, Sue England (540 2934).

For any information about bowling, coaching, winter socials or booking the Clubhouse and facilities, please contact the secretary, Di Blanchet on 03 540 2627 or check out our website, sporty.co.nz/māpuabowls

Sue England

Tasman National art awards

NBS peoples choice 2022
'Looking forward to Look back'
Artist: Panatea Rastegari (New Plymouth)



Tasman National art awards are held annually and host artists from around NZ. We are thrilled to have another awards exhibition that is of the highest caliber and showcasing a variety of styles, subjects and genres. The prize pool is over \$10,000 and is made up of product, cash and vouchers from a variety of generous sponsors.

The process for becoming an exhibiting artist at the awards is firstly by submitting up to 2 images to our registrar. She then passes these onto 3 selectors who then select from images, size and number. No names are shown. The artists are then informed and those selected are asked to submit their applications. They then bring/courier their art works to us and voila!!...we curate the paintings, judging by a completely separate independent panel takes place, awards allocated and the opening night is ready!

Come along and experience this years exhibition!

Mapua Community Hall

Opening night/ awards announced:

Saturday 23rd September

7pm doors open, 7.30pm start

Exhibition open:

Sunday 24th September - Saturday 7th October

Daily 9.30am - 4.30pm

All welcome.

All artworks are for sale (eftpos available).

Free entry and catalogue (donation appreciated)

Anna Pickersgill-Brown

Instagram: [tasmannationalartawards](https://www.instagram.com/tasmannationalartawards)

Facebook: Tasman National Art Awards

Website: www.tasmannationalartawards.nz



**ELECTRICAL
WORX** 2017 LTD
03 528 0075

"FOR ALL YOUR ELECTRICAL NEEDS"
DOMESTIC | INDUSTRIAL | COMMERCIAL

Serving our community for 35 years

Heatpumps- Supply/Install/Serviceing

Domestic

Commercial

Industrial

Irrigation

Solar - On/Off Grid

Give us a call today for a free quote



CARAVAN RENTAL

Local business offering great value, good quality, well equipped UK caravans available for short and long term rental. Can be delivered and set up to a campsite location of your choice. Short term holiday rates from \$50 a day. Long term static hire from \$100 pw.

www.kinacampers.co.nz

Email: info@kinacampers.co.nz




TASMAN
EARTHWORKS & CONSTRUCTION

CONTACT US TODAY
021 119 2239

Tasman Earthworks & Construction operate throughout the greater Nelson Tasman region, offering a wide range of excavation and construction services.

www.tasmanearthworks.co.nz

f @



MyPersonalPlumber

Alex Bint
0800 444 343

027 542 4329
alex@mypersonalplumber.co.nz
www.mypersonalplumber.co.nz

1366 Moutere Highway,
RD1, Upper Moutere, 7173

Mark Carey CONTRACTING LTD

Mark: 021 454 000
Anne: 021 454 731
Phone: (03) 526 7004

Email: mark.carey@xtra.co.nz
28 Holdaway Road
RD2 Upper Moutere Nelson 7175



www.markcareycontracting.co.nz



Tile It

*Custom Tiling
Waterproofing
Wood Flooring*

Tom
021-0485649
03-5432644

Our latest news & adventures

Unexpected Powelliphanta Find

Our Environmental Sustainability students were full of excitement when they discovered an endangered powelliphanta snail whilst out on programme recently. The snail wasn't believed to have survived widespread flooding that had occurred at the project site where students were pulling out weeds to protect the endangered long-tailed bat population in a reserve in the Te Hoiere/ Pelorus River catchment. It was a memorable end to the programme for the students and instructors.

Inspiring Leaders

Our Inspiring Leaders spent their first week of the school holidays improving their confidence and leadership competencies in different settings including caving and pairing up with some keas from Scouts Aotearoa to plant trees at Reid Boysenberry Orchard. Special thanks to Nelson City Council - Youth Strategy Fund, Sarau Community Trust, and the Department of Conservation - Jobs for Nature for your funding support on this programme.



Environmental Sustainability students who found endangered powelliphanta snail in a reserve in the Pelorus River catchment.



Holiday Programmes

We hope everyone has enjoyed the school holidays! Whenua Iti has been busy delivering programmes here in Nelson/ Taman as well as Te Tai Poutini/ West Coast. Participants have had a blast! Special thanks to our funders that have allowed us to deliver more programming for West Coast residents including Sport Canterbury/ Tū Manawa and the Department of Internal Affairs through the Lotteries Grants Board. Keep an eye out on our website for more upcoming holiday programmes.

Hoops for Charity

Ngā mihi nui to Sarah who represented Whenua Iti Outdoors at the NBS Giants 'Hoops for Charity' game. Sarah managed a successful shot through the net scoring Whenua Iti \$500! A huge thank you to NBS for having us and congratulations to our competition on the night Volunteer Nelson for taking out the top spot scoring \$1000!



Whenua Iti staff member Mike Elkington at the NBS Nelson Giants 'Hoops for Charity' event.

We'll see you out there

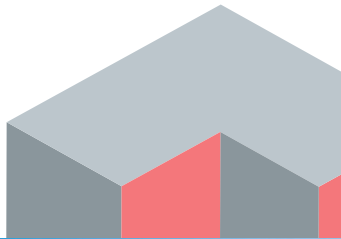
www.wio.org.nz



JasonFrater

BUILDERS LTD

BUILDING
OUTSIDE
THE BOX



021 743 497

www.jasonfraterbuilders.co.nz

info@jasonfraterbuilders.co.nz

Beautiful Homes and Creative Spaces

HOW CAN I HELP YOU?



Find My New
Home?



Sell My Home?

DEBBIE WATSON

Licensed Salesperson

M: 021 462 629

E: debbie@kcandco.nz

W: kcandco.nz



KC & CO.
REAL ESTATE

Kat Campbell & Co. Real Estate Ltd Licensed Agent REAA (2008)

Your trusted legal advisor

PARTNERS FOR SUCCESS



PITT & MOORE
LAWYERS AND NOTARIES PUBLIC

Nelson: 78 Selwyn Place, Nelson 7010
Ph: +64 3 548 8349

Richmond: 66 Oxford Street, Richmond 7020
Ph: +64 3 543 9090

www.pittandmoore.co.nz



Being With Horses

Equine therapy & Activities
Now based in Lower Moutere

The horses will support you and help you explore solutions to manage your mental health challenges, help you build self esteem and confidence and work with you to strengthen social skills, emotional regulation, self worth and belief in self.

ages 10 - 100+

Funding available for age up to 24 years who meet criteria

Contact - beingwithhorsesnz@gmail.com

Facebook @beingwithhorsesmotueka

021 944459

Embarking on your real estate journey?



Whether it's your first time, or your 10th time, your first step is knowledge...

Exciting – you are pre-approved for finance and now you are starting to seriously look at property. Firstly, you need to understand the tenure of the property being offered for sale – there are four types of legal ownership / tenure, but I've detailed in brief the two most common.

Fee Simple / Freehold estate

– you may have heard these names – this is the highest form of land ownership available in New Zealand and generally the most common. Key points are:

- Unlimited duration (it is not time-limited, unlike a lease)
- If permitted by land and property law, or local or regional territorial authority or unitary authority, the land holder may carry out

work such as subdivide, develop, alter buildings, authorise a lease, or impose positive or restrictive covenants on subsequent owners

- Sometimes, covenants are in place which may require consent from a third party entity or adherence to rules.

Crosslease – the easiest way to remember this is that you usually have a share in the land (underlying estate in freehold), but lease the dwelling / other structures – there is no additional cost and the leases are usually for 999 years. These were a common way to have more than one property on freehold land before subdivision. A cross lease provides two layers of rights – rights of ownership and rights of use. Key points are:

- You need to be aware of the flats plan on the Record of Title – this shows the outline of structures / use etc
- There will also be a Memorandum of Lease which sets out restrictions or obligations imposed by the lease which may pertain to restrictions on building and alterations i.e. you may not be able to extend the property, and for any structural work you may need other stakeholders permission.

Need real estate advice? – I'm always happy to chat. Phone 021 462 629 or email debbie@kcandco.nz

Debbie Watson
Licensed Salesperson, KC&Co



Call us for a quote or estimate on your next building project

0274 460 739

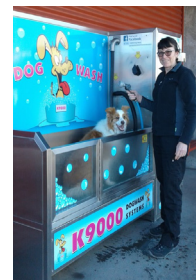


MOUTERE CARAVANS Everything for your caravan!

- Huge range of caravan parts and accessories, appliances, gift range and more in shop and online
- Servicing, Repairs and Installations on English, German and other European caravans
- Self-containment work and certifications
- SOG distributor for New Zealand
- Installation of motor movers, solar, satellite dishes, fridges, SOG, fresh and grey water tanks and more

Corinne and Frank Lindemann-Roth
219 Old Coach Road, Mahana
Upper Moutere 7173, Nelson, NZ
Phone: 0064 3 5432668
Email: info@mouterecaravans.co.nz
www.mouterecaravans.co.nz

TOWN & COUNTRY VET RICHMOND



Dog Wash K9000

Coin and note operated
Open 24 hours
7 days

Looking for **excellent, friendly** legal assistance for a **reasonable fee**?

See us for all your residential and commercial conveyancing, refinancing, debt consolidation, wills and enduring powers of attorney, relationship property matters, trusts

THE LEGAL HOUSE

TLH Law Limited

Josh Boyce L.L.B. Lawyer

Robert Styles L.L.B. Lawyer

Yvonne Watson DipLegalExec.NZLS

Pauline Scott DipLegalExec.NZLS

33 Trafalgar Street, Nelson
03 548 7839
www.thelegalhouse.co.nz



**EVERY FUEL PURCHASE EARNS
REWARDS FOR OUR LOCAL SCHOOLS**



**We look forward to looking
after your vehicles this year.
Please phone and talk to
Tim to book your vehicle in.**



MOWTIVATED

Lawn & Garden LTD

For all your garden needs:

- ✿ Weeding & Mulching
- ✿ Pruning & Hedge Trimming
- ✿ Push & Ride-on Mowing
- ✿ Brush Cutting
- ✿ Green Waste Removal
- ✿ Lifestyle Blocks

Something you want done not listed above?
Give us call!



Michael and Anita are a husband and wife team with a passion for providing excellent quality garden services. We are not afraid of taming wild gardens.

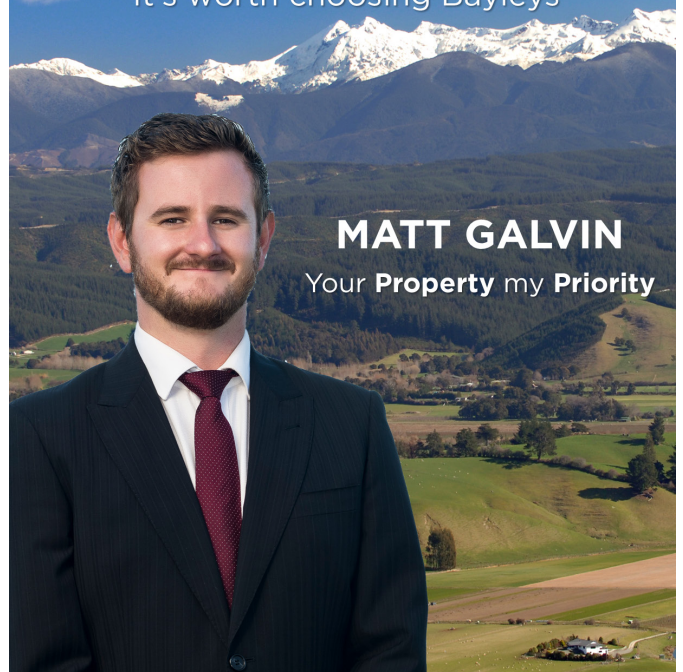
027 599 3304

No job too small, just give us a call. Free quotes!

BAYLEYS

VINING REALTY GROUP LTD, BAYLEYS, LICENSED REAA 2008

Whatever your property is worth,
It's worth choosing Bayleys



MATT GALVIN

Your **Property** my **Priority**

027 768 6288 | 03 528 5242 | matt.galvin@bayleys.co.nz

Philosophy of Steiner Schools



As you drive along Robinson Road in Lower Moutere, you will notice a building being constructed on the Steiner School premises and wonder what is going to be established there. This is a new kindergarten, set on piles, as the land can turn into swamp land after rainy spells. Next to this new kindergarten building, a play area is taking shape, designed and constructed by parents.

This Motueka Steiner Farm School is the beginning of a wider vision for a school reaching from kindergarten to the end of the Steiner school curriculum in year 12. This curriculum was given to the teachers of the first Waldorf School in Stuttgart, Germany, in 1923; "Waldorf" because it was established on the premises of the Waldorf Astoria cigarette factory

and donated by the owner of this factory who was a convinced follower of Rudolf Steiner and supporter of a new education for children after World war I.

What is so special and different about the Steiner/Waldorf world view? The most

important difference is the view of the human being as a spiritual being, as a being that has close connection to higher worlds and spiritual beings who have supported human development and world evolution all along. The human being is seen as having four bodies – a physical body, a life or etheric body, an astral or emotional body and an I or ego organisation. Of these bodies, only the physical is fully developed at birth. A Steiner School helps to bring these different bodies to maturity. The etheric body needs time to develop and help the child grow and get a hold of his/her body roughly for the first 7 years before school starts. The second seven years (7-14) support the adolescent going through developmental transitions towards a mature astral/emotional

body. and the third 7 years (14-21) lead the human being to adulthood at 21.

The curriculum contains many artistic activities to feed and develop not only the intellect, but also the soul of a child, because the human being consists of the physical body, the soul and the spirit. These concepts of Steiner education have been picked up world-wide, and many schools operating with the underlying principles have developed in many different countries. World-teacher conferences are being held every 4 years at the Goetheanum in Dornach, Switzerland where over a 1000 teachers from all over the world come together for a week to share some of their experiences, including student theatre performances, orchestra, lectures and workshops. Every morning a karakira from a different country in a different language is shared, the words are known by everyone in their own language, quite a touching experience in itself.

The Steiner School at Robinson Rd. is growing and is part of this inspiring network of schools. We will watch with interest its progress over the next few years.

Edith Bulle

draftx

DESIGN & DRAFTING SERVICES
LBP Design 2



Matthes Bender

Neudorf Road
Upper Moutere

matthes@draftx.nz
021 1161 767



Motueka/Tasman

**Auto/Marine Upholstery & Outdoor
Shade Solutions.**

Caleb Hill- 18 years industry experience.
0273620048
acanvasltd@gmail.com
2529 Moutere Highway, Lower Moutere 7175.



PGG Wrightson Real Estate

Introducing Doug Smith

I have been living and working locally since 2008.
Use my experience, honesty, integrity and work ethic to deliver you the highest value for your number one asset.
Competitive commission and marketing tailor made to your individual requirements.

I welcome your call for a no obligation appraisal and any advice I can give you.

**Professionalism
Knowledge
Competitive Pricing**



M 027 543 2280
douglassjcsmith@pggwrightson.co.nz

www.pggwre.co.nz Licensed REAA 2008

Helping grow the country



TOWN & COUNTRY

VET

"...for all creatures great & small..."

**Regular Moutere visits
discounted mileage
T&Cs apply**

Ph 544 1200

info@tcvet.co.nz * www.tcvet.co.nz

**25 Edward Street, Wakefield
35 McGlashen Avenue, Richmond**



24 hour emergency vet

Hon Damien O'Connor

MP for West Coast-Tasman

Minister of Agriculture, Biosecurity and Food Safety
Minister for Rural Communities
Minister of State for Trade and Export Growth



Freephone: 0800 326 436

181 Tainui St, Greymouth
Phone 03 768 7189

208A Palmerston St, Westport
Phone 03 789 5481

234 High St, Motueka
Phone 03 528 8190



/damienoconnormp



@damienoconnormp



Labour

Authorised by Hon Damien O'Connor, Parliament Buildings, Wellington

MOTUEKA ELECTRICAL



Motueka Electrical Limited
027 588 5774 or 03 528 4488
https://www.motuekaelectrical.com

LUUK HERMENS

027 588 5774

03 528 4488

motuekaelectrical@mail.com

HEAT PUMP SUPPLIER & ACCREDITED INSTALLER

Vet Helpline

Veterinary dentistry

Over the last few years, the field of veterinary dentistry has expanded hugely in knowledge and also across many species. There is so much more information about animals and their teeth that it is a specialist subject...

At home with our pets there is no need to put up with stinky breath, gum disease and broken teeth – there is so much more we can do!

The most common dental health problem we see in pets is periodontal disease. This starts with inflammation of the gums around the teeth which progresses to plaque, tartar, infection and eventually loose teeth. Bacteria in the mouth easily get into the blood stream through these diseased gums and spread to other organs such as heart and kidneys. The same thing happens in humans but we brush our teeth twice a day every day to prevent it.

70% of cats and 85% of dogs over 3 years of age are affected by periodontal disease

The main symptom of periodontal disease is smelly breath. Sometimes there might be drooling or trouble eating but animals don't often show

signs of pain. The other oral health issues we see include broken teeth, worn teeth, tooth decay, tumours, overbites, underbites, baby teeth that haven't fallen out, oronasal fistulas and fractures.

In the clinic we have to anaesthetise animals to do dentistry effectively. It's not possible to do a good job while a dog or cat is trying to get away! Or bite! As in humans dental xrays are essential to see below the gums and fully assess teeth health. Damaged teeth are treated as necessary which often means extraction. But specialist veterinary dentists can do root canals, fillings, crowns, bridges and yes even braces. We always finish off with a thorough clean and polish to make those teeth sparkle!

Prevention is best. Just as with humans, it is recommended that your pet experiences the mechanical process of a good toothbrushing every day. So,



get brushing! It makes a HUGE difference! And it also means you are seeing their mouth every day so see problems early.

Dental diets, dental chews, chew toys, additives in water and oral gels all help to slow down dental disease but toothbrushing is the gold standard – the same as people. Once developed, periodontal disease can be managed but not eliminated.

It is estimated good dental hygiene can add 2-4 years to your pet's life as well as ensuring they get the quality of life they deserve.

Phone us for advice if you need help.

Brenda Halliwell, T & C Vet
03 544 1200

water
FILTRATION
& PUMPS

Frans van de Loo
0275 281 366

frans.wfp@gmail.com
waterfiltrationpumps@gmail.com

 **CONCRETE
& METALS**
TASMAN BAY LTD

Driveways.
Our specialty, your choice.

Asphalt and Chip Seal | Concrete |
Decorative Concrete | Decorative Chip

start prepping for the winter.
First step, Contact us for a free quote

03 528 6344 | 99 King Edward Street | info@concrete-metals.co.nz



Trade and Professional Services List

Please support our advertisers

What	Who	Contact
Accommodation	Tasman View Accommodation	www.tasmanview.co.nz 021 119 2239
Accommodation	Wainui Getaway Golden Bay - Sharon	027 432 8145
Accounting Bookkeeping	Admin and Accounting - Diane Maisey	027 444 6387
Acupuncture	Dorothea Tebbenhoff	027 214 6444
Architectural Designer	Simone Wenk	021 1049 039 AH: 03 540 3282
Barley	Whole barley 25kg bags	021 454 731
Builder	Andrew Eggers	027 446 0739 AH: 03 543 2757
Builder	Jason Frater	021 743 497 AH: 03 528 0337
Builder	NTC	021 140 8077
Builder	Tag Construction - Trentan	021 866 740
Caravans	Kina Campers	www.kinacampers.co.nz
Caravans	Moutere Caravans	03 543 2668
Chiropractors	Tasman Bay Chiropractic	03 544 4554
Child Care/Early Childhood Education	Country Kids Manager - Nickie	www.countrykids.org.nz
Clothing	Jacqui's Pre-loved and More - Jacqui	027 346 4071
Community Group	Craft and Connect - Renate	renate@fairyvalley.net
Composting Toilets	Biolo - Rick Stokes	021 1029 098 / 03 526 7882
Contractor & Builder	Tasman Earthworks & Construction	021 119 2239 / 027 3855 998
Contractors	G & R Contracting - Graham Hyde	021 064 8625
Contractors & Cartage	Wayne, Heine	027 430 2725 AH: 03 543 2788
Draftsperson	Draftx Design & Drafting - Matthes Bender	021 116 1767
Drum Lessons	Dave Woolf	022 655 6065
Electrician	Electrical Worx	0800 967 948
Electrician	Motueka Electrical - Luuk Hermens	027 588 5774 AH: 03 528 4488
Electrician	Sun Electrical - Tony	03 540 2367 Mob: 027 3784 580
Food for Community (Food Bank)	Kai Collective	021 2626 675
Funeral Directors	Simplicity Funerals - Anne Loach	03 929 5145
Hay and Baleage Production	Mark Carey Contracting	021 454 000 AH: 03 526 7004
Health & Wellbeing	Greenworld Health & Lifestyle	03 528 7262
Honey	Western Ranges - www.westernrangeshoney.co.nz	sales@westernrangeshoney.co.nz
Horse Cover / Gear Repairs	Lawrie	03 543 2234 Mob: 021 208 2192
Justice of the Peace	Cathy Ellis	021 158 2890
Kitchens	Moutere Village Kitchens - Steve Farmer	021 0839 1206
Landscaping	Mow-tivated Lawn & Garden	027 599 3304
Landscaping	Hardy Landscapes - Michael Hardy	021 443 908 AH: 03 543 2555
Landscaping	Stonescape	03 528 6344
Lawns	Quick Cut Lawns - Allan	022 5850 047
Lawyer Legal Services	Pitt & Moore	03 543 9090
Lawyer Legal Services	The Legal House - Yvonne Watson	03 548 7839
Massage - Bowen Therapy	Better Bodies - Suzanne Clark	021 1414 937
Mechanic	Moutere Motors	03 543 2707
MP	Damien O'Connor, Labour Party	0800 DAMIEN
Nursery	The Nursery, Tasman Bay - Jo	021 122 3056
Painter	Vision Painting Tiling & Plastering - Glen	020 4091 7929
Play Group	Karen Barnett	021 252 2657
Plumber	My Personal Plumber - Alex Bint	027 542 4329 AH: 0800 444 343
Pub/Restaurant	The Moutere Inn	03 543 2759
Real Estate	Bayleys - Matt Galvin	027 768 6288
Real Estate	PGG Wrightson - Doug Smith	027 543 2280
Real Estate	You.Realty - Debbie	021 462 629
Recreation Centre	Moutere Hills Community Centre	03 543 2516
Roading and Civil work	Concrete & Metals Tasman Bay	03 528 6344
Scaffolding	Tasman Bay Scaffolding Ltd	021 436 832
Tiling	Tile it - Tom	021 048 5649 AH: 03 5432644
Upholstery	Adventure Canvas, Auto / Marine - Caleb Hill	027 3620 048
Vet	Town & Country Vet	03 544 1200
Water	Water Filtration & Pumps - Frans	0275 281 366
Youth Group	Tessa Werner	022 101 2276