

The Grapevine

MOUTERE HILLS COMMUNITY NEWS

Inside this issue:

- 2 Grapevine Information
- Grapevine Says
- Moutere Fire Brigade
- 5 Community Noticeboard
- Sarau Trust
- 7 Restoring the Moutere
- 9 Te Mamaku Project Update
- 10 MDBA Update
- 11 Kai Collective
- 13 Mapua Bowls
- 15 Whenua Iti
- 17 St Pauls - Dec. celebrations
- 19 Vet Helpline
- 21 Evidence, Experiments & Beer
- 22 Trades & Professional LIST

Special points of interest:

Tips on how to care for your pets over summer - pg 19.

Thank you for reading the Grapevine and for supporting the advertisers.

Gold coin donation.

FREE DELIVERY



Whistling Tim

He sounds as kiwi as they come – but he actually started life in the rolling hills of Herefordshire.

Tim Greenhough was just 14 when his parents sold their UK farm, packed their bags, and brought their family of four to NZ to live. A leap of faith considering they had never even been for a visit. They settled on a farm in Tasman, and Tim went on to complete a diploma in agriculture at Lincoln University. He had completed the prerequisite two years of practical experience, the first in Southland, the second for Charlie Teece in the Moutere, and his class of 1974 was the first time a full year of study was offered.

Back in Tasman he continued farming and also agricultural contracting, and in 1979 bought a 50 hectare farm in Upper Moutere. He still lived on the

farm in Tasman and it was here that he met his wife Jane – also from the UK, she came to stay for a week on a young farmers exchange. Romance blossomed and although Jane finished her tour of NZ, she was back within six months, and they married six months later. Tim recalls having to prove to immigration that it was not simply a marriage of convenience – they were both interviewed (in separate interview rooms) and asked similar questions. He's still not sure that he answered them all right but the powers that be concluded that their relationship was genuine.

They moved onto the Moutere farm, and some time later the Tasman farm was sold to the Crown to make way for what is now SH60 through the area. Initially they grew small seeds as well as running stock and contracting and

cont. pg3

PLACING AN ADVERTISEMENT

Thank you for advertising in the Grapevine—you help us cover the cost of producing and delivering this free community newsletter each month.

The deadline for each issue is the **15th of the month**. Please email your print-ready advert (JPG, PDF, or PNG preferable) to: umograpevine@protonmail.com

The following prices apply for advertising:

∞ Births, marriages, deaths, group or giveaway notices on the community noticeboard (25 words):	FREE
∞ 1/16 pg portrait 44 x 55mm:	\$7
∞ 1/8 pg landscape 90 x 55:	
/ portrait 44 x 127:	\$14
∞ 1/4 pg portrait 90 x 127:	
/ landscape 185 x 55:	
/ landscape 136 x 67:	\$28
∞ 3/8 pg*	136 x 127: \$42
∞ 1/2 pg** landscape 185 x 127:	\$56
*if available - limited listing.	
**limited to events and community notices.	

To make payment please email:
umograpevineinvoices@gmail.com

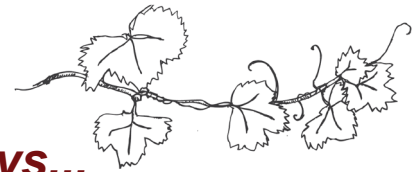
Sending us articles of interest

We warmly welcome contributions to The Grapevine from all residents in the Moutere and Tasman regions. You make the newsletter an interesting read! There is no cost for having your articles published if you are telling the community about a fundraising venture. However we do appreciate a donation from commercial ventures to help us cover our printing costs—see email address above to get bank details.

Archived coloured copies of the Grapevine are available at www.mouterehills.org.nz/community/the-grapevine courtesy of the Moutere Hills Community Centre staff. Grapevine circulation is approximately 1400 copies. This issue has been constructed by volunteers: Rachel Field, Jenny Leith, Sharon Beuke, Bessie Adie, Kirsty Vanderwerff and Sue McGregor.

Disclaimer

Views expressed in articles in The Grapevine are not necessarily those of The Grapevine team or its editor. While every effort has been made to ensure the accuracy of the information included in this publication, The Grapevine takes no responsibility for errors or omissions or for any consequences of reliance on this information. All adverts are required to present a name or contact details so that people can respond directly should they have any queries or concerns. Publication of advertising material implies no endorsement of either a product or a service.



Grapevine Says...

Which words sum up 2023 best for you?

Meh, tumultuous, amiable, raucous, muddy, clamorous, ok, unrest, better, busy, ugh, hopeful, family, relief?

The Grapevine is delighted that our long time and dedicated editor Sharon Beuke has been acknowledged for her nearly 50 years of Outstanding Community Service to this district.

We would like to wish all our readers a meri kirihimete and a very happy, healthy, peaceful, normal, hug-filled, hand shaking New Year!

This issue will cover December / January; we'll see you back in February for more local news!

Email us: umograpevine@protonmail.com



Moutere Volunteer Fire Brigade

Callouts for the month of October 2022

4th Oil spill on road, Redwood Valley Rd/Moutere Highway
5th Alarm activation at Upper Moutere School
5th Bathroom fire, Stringer Road
8th Puppy stuck under house, Neudorf Road
9th Smoke showing at Smoke House Restaurant
15th Rubbish skip fire, Flaxmore Road
18th MVA, car fire, Moutere Highway

As some of you might know, a year ago we were broken into and had a few items taken, one being a TIC camera (Thermal Imaging Camera), we have since had everything replaced that was taken. Given that, we would just like to give a huge thanks to persons who wish to remain anonymous in our community who gifted us \$5000 to go towards a security system for the station, Which we now have up and running. It was such an awesome gesture and makes us proud to be a part of this great community.

over the years have added other parcels of land. It was while contracting that Tim became known for his whistling – the locals always knew when he was going down the road because they could hear him whistling.

He dreamed of owning a high country run, and so bought some land at the top of the Takaka Hill – he figured that was as close to the high country as he was going to get! He loved farming there and only sold some 25 years later when circumstances led to an offer from the crown who planned to let it regenerate back to its natural state. Along with farming Tim always had an interest in Search and Rescue. He joined St John, completed a first aid course, home nursing, and became a proficiency grade ambulance officer, joined S & R, and was active for thirty years, - the only non-police officer to be president of the Motueka Search & Rescue. There are a few memorable events from that time - one is coming

across a missing man during the night, asleep under the porch of a bach in Torrent Bay – the man was instantly awake and swinging a stick at his rescuers, who had to beat a hasty retreat. He'd become separated from his friends, took refuge at the bach but was taking no chances! Another was the discovery of a missing man in Marahau who was very publicity shy – he posed as one of the S & R team until safely out and away from media attention!

Tim and Jane had three children, they attended Lower Moutere school, so it followed that Tim was on the board of Trustees for about 10 years, and then became chairman - it was during his tenure that the school was rebuilt following damage caused by a large fire in 1970.

These days Tim and Jane are 'slowing down' or trying to.... They have four grandchildren who all live nearby,

and they still have sheep and cattle. His daughter helps on the farm and has the title of farm manager – Tim says, somewhat tongue in cheek – that that mostly involves 'telling Dad what to do'. He is leasing part of his land to a neighbouring orchardist, for planting as orchard, close to another orchard he bought years ago and removed the trees for pasture – the irony of changing times! He is also in his second year as chairman of the Upper Moutere Community Centre and remains an order member of the order of St John. The couple own a bach in Okiwi Bay, where Tim retreats as often as he can to play cards (Euchre), go fishing and join in with the local monthly 'cookup' night. Ever the community man he is chairman of the Okiwi Bay Ratepayers Association, where he says his most notable task is 'arguing with council'. The future? He's looking forward to spending less time on the farm and more time at Okiwi Bay – and he's sure to be whistling!

Mark Carey CONTRACTING LTD

Mark: 021 454 000

Anne: 021 454 731

Phone: (03) 526 7004

Email: mark.carey@xtra.co.nz
28 Holdaway Road
RD2 Upper Moutere Nelson 7175



www.markcareycontracting.co.nz

CRAFT & CONNECT

Would you like to join our group
for a social afternoon?

Crafting is not obligatory, you can enjoy a cuppa/
glass with lovely ladies at the Moutere Pub where
we meet every Thursday from 1.30 – 3.30 pm.

For details email renate@fairyalley.net

STONESCAPE Garden Supplies



Christmas and New Year Hours

24th–27th December Closed
28th–30th December 8.30am–4pm
Saturday 31st December 8am–12.30pm
2nd–3rd January Closed
4th–6th January 8.30am–4pm
Saturday 7th January 8am–12.30pm
Monday 9th January onwards – Normal Trading Hours
Mon–Fri – 7.30am–5pm, Saturday 8am–12.30pm

Happy Holidays



Christmas Gift Idea

Thinking of a great gift for the Garden
Lovers this Christmas?

Contact us now or call in to get a voucher
to spend here at Stonescape Garden
Supplies.



Find us | 99 King Edward Street | www.stonescape.co.nz

03 528 6344 | 99 King Edward Street | info@stonescape.co.nz | www.stonescape.co.nz

WHAT DO YOU MEAN
"NOT HELPING"?



SHOP.LINGUISTOV.COM

Secure your future with **CrestClean**

If you're looking for a business opportunity, with guaranteed income, full training and administration support, then a local CrestClean Franchise ticks all the boxes.

What's more, you can enjoy a flexible work-life balance with plenty of scope for business growth.

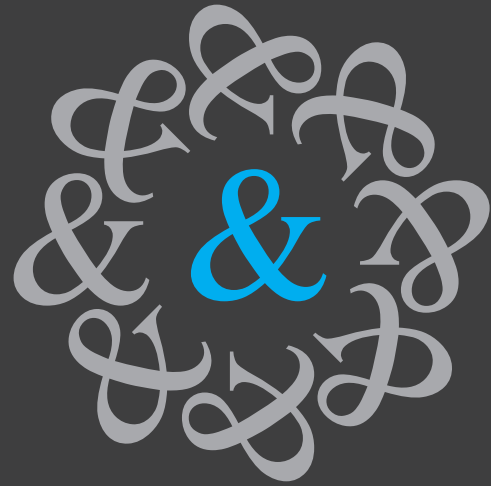
So, if you're looking to secure your future in the Nelson or Blenheim area get in touch today!



Call **0800 273 780** for more information or visit
crest.co.nz/nelson crest.co.nz/blenheim

Your trusted legal advisor

PARTNERS FOR SUCCESS

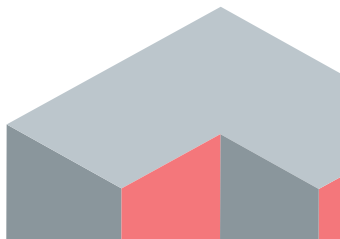


PITT & MOORE
LAWYERS AND NOTARIES PUBLIC

Nelson: 78 Selwyn Place, Nelson 7010
Ph: +64 3 548 8349
Richmond: 66 Oxford Street, Richmond 7020
Ph: +64 3 543 9090
www.pittandmoore.co.nz

JasonFrater BUILDERS LTD

**BUILDING
OUTSIDE
THE BOX**



021 743 497
www.jasonfraterbuilders.co.nz
info@jasonfraterbuilders.co.nz

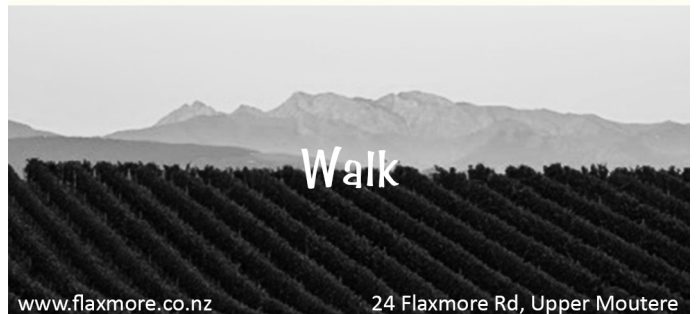


Beautiful Homes and Creative Spaces

Taste



Walk



www.flaxmore.co.nz

24 Flaxmore Rd, Upper Moutere



Art

Community Noticeboard

MOUTERE HILLS COMMUNITY CENTRE


The team at Moutere Hills Community Centre would like to thank you for your support this year and wish you a very



Merry Christmas
AND HAPPY NEW YEAR

The office will close at midday on Friday 23rd December and re-open at 9am on Monday 16th January.

If you require use of the facility during this time please contact Katrina on 0275118825

The Fitness Centre will remain open to all members.
For details about classes, social sports and activities please visit our website www.mouterehills.org.nz



Phone: 543 2516

Email: enquiries@mouterehills.org.nz

Website: www.mouterehills.org.nz



UPPER MOUTERE PLAYGROUP we meet every Friday 10am - 12pm at the Moutere Hills Community Centre, all families welcome.

Contact Karen 021 252 2657

NEED A LIFT? Māpua Willing Wheels Volunteer Drivers, transport around Māpua, Motueka, Richmond, Nelson (no airport runs). Tel 022 6822 373 to book / mapuawheels@gmail.com, 24hrs notice required.

MOTUEKA COASTAL BUS operates Tuesdays, Thursdays & Saturdays, leaves Motueka i-SITE 9.30am to Tasman, Māpua, Richmond CBD & Pool, returns 1pm. Pre-booking essential Motueka i-SITE 03 528 6543.

Sarau COMMUNITY TRUST

The Sarau Community Trust announces that during their second funding round in 2022 after the hugely successful Sarau Winter Sale, the following Moutere Hills organisations have applied for and received grants exceeding a total of \$13,400

- The Upper Moutere Volunteer Fire Brigade
- The Empowerment Trust (for work in schools)
- The Moutere Kai Collective
- The Wilderness Canoe Trust (for work in schools)
- The St Pauls portico/history fund
- The children of Ukraine
- Moutere Hills Community Centre

The Trustees wish to congratulate these groups on the fantastic community involvement and support they provide in our area.

In total the Sarau Community Trust have made \$248,000 available to the community since 2009, recycled thousands of books, helped to bring folk from out of the district here to the MHCC and (hopefully), provided a lot of fun along the way.

We have farewelled Libby Bibby as a Trustee and thank her for her many years of service to the Moutere community through her work with the Trust, and with many years of Sarau Festivals. We are delighted to welcome Geaneen Hayes as a replacement Trustee.

Finally – we must advise that sadly there will be no Sarau Festival 2023, but hopefully the gathering will be back bigger and brighter in 2024. Meantime we will continue to host quiz nights and the Sarau Winter Sale. The Trustees wish you all a safe and cheerful summer.

Ruby Bay Store

7.30pm Saturday 3/12

Charlotte Yates

Fab Singer/Songwriter

1pm Sunday 18/12

Albi and the Wolves

Alternative Folk/Indie

We're looking for performers, entertainers, drama groups, comedians, presenters etc, for a variety of events and activities at RBS. Please get in touch if you're interested

Visit our website to make bookings and to see our 2023 coming events and movie screening schedule

www.rubybaystore.co.nz

174 Stafford Drive, Ruby Bay
rubybaystore@gmail.com



green world **health**
& Lifestyle

Sole Supplier of
Dr. Hauschka
Products
in Motueka.



Open 7 Days



177 High Street, Motueka

Ph: 03 528 7262

E: greenworldhealthandlifestyle@gmail.com

Yoga with Martin

5 min. from Upper Moutere
NEW!

Woolshed Yoga Studio
206 George Harvey Road

Any ability: Wed, 9.15 – 10.30am

macocam@gmail.com

027 614 5936



**Tasman Bay
Chiropractic**

Keeping you in the game since 2002

Monday-Saturday

03 544 4554


64 Oxford St Richmond

Three chiropractors available

Referrals, families and
all new patients welcome

Visit our website or call for
more information

tasmanbaychiropractic.co.nz

Find us on 



Whole Barley
25 kg bags
\$20 per bag



Phone 021 454 731 or 03 526 7004

Adventure **CANVAS**
Motueka/Tasman

**Auto/Marine Upholstery & Outdoor
Shade Solutions.**

Caleb Hill- 18 years industry experience.

0273620048

acanvasltd@gmail.com

2529 Moutere Highway, Lower Moutere 7175.



**Dorothea
Tebbenhoff**
Acupuncture



Licensed Acupuncturist
MAcNZ, Acc Provider

Re-located to Motopolis building

31 Wallace St, Motueka

027 214 6444

www.tasmanacupuncture.co.nz

Restoring the Moutere



The Moutere catchment group is now four years old. We started with an idea from one landowner who then gathered 10 landowners, swelling to 100 by our first official meeting, and now over 200 landowners are working together to plant, restore and protect the Moutere Catchment.

Landowner engagement has been driving the success of this project. With the help of Tasman Environmental Trust (TET), Tasman District Council and NZ Landcare Trust.

The catchment group secured funding from Te Uru Rakau (One Billion Trees) to plant 270,000 plants over 3 years. We are thrilled to announce that at the end of winter 2022, 270,000 plants have been funded and planted in the catchment. Because of the huge contribution of Moutere landowners in the areas of site, prep, planting, and maintenance we have enough project funds to plant an additional 80,000 in 2023, our final year of Te Uru Rakau funding.

A total of 350,000 funded plants for the Moutere Catchment - what a great achievement - thank you all involved! For more information and to request plants for 2023 follow the survey link: <https://www.surveymonkey.com/r/Moutere23>



Any queries please contact Elliot Easton – ellioteaston@tet.org.nz

2022 Planting Report

2022 was a challenging but ultimately successful planting year, with excellent community engagement and enthusiasm for planting. We have recorded 126 Moutere Catchment landowners planting 165,110 native plants in 2022. A wet winter created a challenging and disrupted planting season, followed by a dry start to the Spring / Summer period, a cause some concern. Plantings that receive a

higher level of care, maintenance and reduced competition for precious water will have a better chance to survive and thrive during this dry period.

A special mention to the 8 local nurseries who were able to grow this huge number of plants, and Appleton's Tree Nursery for donating 4500 Kahikatea to the Moutere Catchment Group. We now have 4 community nurseries up and running, three of these provided plants that were planted in 2022.

Two highlights from the 2022 planting season include the starting of the Te Mamaku re-vegetation project and engaging with all landowners on the water way connecting one of our most significant wetlands (Machine Gully) with the Moutere Inlet.

Do you see restoration corridors starting to form in your part of the catchment?


TASMAN
ENVIRONMENTAL TRUST



November 22 workshop focused on "Getting your plantings to thrive"
Aporo road, Tasman plantings

water
FILTRATION
& PUMPS

Frans van de Loo
0275 281 366

frans.wfp@gmail.com
waterfiltrationpumps@gmail.com

Looking for **excellent, friendly** legal assistance for a **reasonable fee**?

See us for all your residential and commercial conveyancing, refinancing, debt consolidation, wills and enduring powers of attorney, relationship property matters, trusts

THE LEGAL HOUSE

TLH Law Limited

Josh Boyce L.L.B. Lawyer

Robert Styles L.L.B. Lawyer

Yvonne Watson DipLegalExec.NZLS

Pauline Scott DipLegalExec.NZLS

33 Trafalgar Street, Nelson
03 548 7839
www.thelegalhouse.co.nz

FUEL FOR SCHOOLS
School Sponsorship Programme

**EVERY FUEL PURCHASE EARNS
REWARDS FOR OUR LOCAL SCHOOLS**



We look forward to looking after your vehicles this year.
Please phone and talk to Tim to book your vehicle in.

Main Road
Upper Moutere

Ph 543 2707

mouteremotors

MOWTIVATED

Lawn & Garden LTD

For all your garden needs:

- ✿ Weeding & Mulching
- ✿ Pruning & Hedge Trimming
- ✿ Push & Ride-on Mowing
- ✿ Brush Cutting
- ✿ Green Waste Removal
- ✿ Lifestyle Blocks

Something you want done not listed above?
Give us call!



Michael and Anita are a husband and wife team with a passion for providing excellent quality garden services. We are not afraid of taming wild gardens.

027 599 3304

No job too small, just give us a call. Free quotes!

BAYLEYS

VINING REALTY GROUP LTD, BAYLEYS, LICENSED REAA 2008

Whatever your property is worth,
It's worth choosing Bayleys



MATT GALVIN

Your **Property** my **Priority**

027 768 6288 | 03 528 5242 | matt.galvin@bayleys.co.nz

Te Mamaku project update

October 2022



Big clearance work has visibly started on SH60 and they need your help!

The Tasman Area Community Association (TACA) has an ambitious plan to convert the abandoned land along the Te Mamaku Drive on the eastern side of SH60, formerly known as the Ruby By-pass, which is totally overgrown by gorse, wattles and wilding pines, into a green corridor linking the Moutere Inlet and Waimea Estuary between Tasman Village and Māpua.

The popular Dicker Ridge Loop Track runs through the entire project and is frequently used by walkers, bicyclers and horse riders.

Divided into more than 11 sections/blocks to work with, they already have finished clearing and planting Block 0 at the northern end in June/August 2022 of 500 metres in length, thanks to the generous support of TET (Tasman Environment Trust) and Restoring

the Moutere.

Work on Block 1, about 350 metres in length and approx. 1.5 hectares of land, has been funded so far by Rātā Foundation and a TDC Community grant and they can now happily advise that the land has been cleared at the end of October 2022. Spraying of re-growth of weeds will happen at the end of autumn and planting is scheduled for May/June 2023.

Their efficient contractor Aaron Baigent has not only cleared Block 1 but Block 2 as well (another 350 metres & another 1.4 hectares)! As the machinery was already on site, it took only a couple of days to get this site tidied up too.

As they have no current funding for Block 2, they are now seeking the support from additional local sponsors:

- to cover the cost of clearing (approx. \$8,000),
- spraying of re-growth of seed

in April/May 2023 (approx. \$3,000),

- buying about 6,000 plants, plant guards, planted by a planting contractor (approx. \$20,000).

This is the “business card” or “entranceway” to Motueka and the Abel Tasman National Park while driving down the SH60 towards Tasman and the first visible results can be seen now!

Please be a part of their ambitious project; your support would be very much appreciated by the wider community!

David Short and Michael Makert
Tasman Area Community Association (TACA)

Their webpage: <https://tinyurl.com/ytdvdtpe>

Their Givealittle page: <https://tinyurl.com/39bebsek>

Graham Hyde
021 064 8625
grcontracting.co.nz
gham1@outlook.co.nz



- 1.7T Digger / Truck
- Property Maintenance
- Landscaping

- Fences
- Decks
- Slope Mowing



CARAVAN RENTAL

Local business offering great value, good quality, well equipped UK caravans available for short and long term rental. Can be delivered and set up to a campsite location of your choice. Short term holiday rates from \$50 a day. Long term static hire from \$100 pw.

www.kinacampers.co.nz

Email: info@kinacampers.co.nz



Want to get in touch?

Email us at:

mdba@mapua.co.nz

December 2022

Summer has arrived, what a year it has been for all in business. There are still challenges facing some with rebuilding or reshaping their businesses after three years of unprecedented times. You have all been so resilient when at times it has been incredibly hard and frustrating, our region is lucky to have you all opening your doors everyday for us. Remember to use local resources like Business Assist, NRDA and the Nelson Chamber of Commerce for any business assistance. We hope you will all have some time out with family and friends over the coming festive season to enjoy the simple things in life. We wish you all a prosperous summer.

LUNCH & LEARN EVENTS 2023

We will have a new line up of events starting in March 2023. If you would like to suggest a topic let us know so we can do our best to source a speaker to present and share their expertise.

MDBA CHRISTMAS PARTY 2022

It was a great event with everyone enjoying the stunning setting at Gravity Cellar Door. Catching up, networking, making new contacts and building on ones already made over the last few years. Locals supporting locals is important and as valuable as ever to keep our region and communities thriving and growing. Thank you to all that came along. See you in 2023.

Cheers, from the MDBA Committee

A BIG THANK YOU TO ALL OUR MEMBERS

Thank you to all of you, the members of the MDBA. Some of you have been with the MDBA since the beginning, some not as long and some brand new.

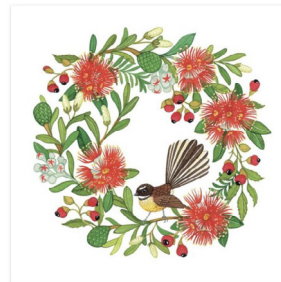
From builders, painters, architects, tilers, landscapers, landscape suppliers, plumbers, electricians, earthworks, auto centres, retail, cafes and restaurants, health and beauty providers, accommodation providers, wineries, takeaways, accountants, real estate, growers, producers and galleries. Such a wide variety of local businesses from all sectors within the Tasman region as members it is so great to see.

Remember to stay, shop, support, and buy local it means the world to local business owners. It's another great way to build connections, locally.

From the committee, we wish you all a happy holiday season with hopefully some days off for you all to reflect, recharge, breathe and laugh with family and friends.

We are seeking new committee members for 2023, we are needing the following positions to be filled: chair person; treasurer and vice chair.

Email mdba@mapua.co.nz



**Supporting local
businesses since
1992.**



Call us for a quote or estimate on
your next building project

0274 460 739



MOUTERE CARAVANS

Everything for your caravan!

- Huge range of caravan parts and accessories, appliances, gift range and more in shop and online
- Servicing, Repairs and Installations on English, German and other European caravans
- Self-containment work and certifications
- SOG distributor for New Zealand
- Installation of motor movers, solar, satellite dishes, fridges, SOG, fresh and grey water tanks and more

Corinne and Frank Lindemann-Roth
219 Old Coach Road, Mahana
Upper Moutere 7173, Nelson, NZ
Phone: 0064 3 5432668
Email: info@mouterecaravans.co.nz
www.mouterecaravans.co.nz

TOWN & COUNTRY VET

RICHMOND



Dog Wash K\$9000

Coin and note operated

Open 24 hours

7 days



THE MOUTERE *Kai* Collective



This issue of The Grapevine will be landing in letterboxes as most of us start preparing for the holiday season and its various festivities. We did our last couple of cook-ups in November and will be back in the kitchen in February. Until then we hope that our meals can bring some comfort during the summer months.

Once again the wonderful **Sarau Community Trust** has been busy behind the scenes supporting local groups and we have again been the recipients of an extremely generous donation. This money allows us to focus on cooking and caring for our community, and a lot less on fundraising – which we are very grateful for!

NBS Motueka have also stepped up their game yet again and have funded another year's worth of bamboo containers and stickers for us to package our meals up nicely. Their lovely staff even pop out to help us cook meals too – it's a valuable partnership for us and we so appreciate them.



Our casual little cooking collective would like to wish you all a
Meri Kirihimete me te Hape Nū Ia!
Merry Christmas and a Happy New Year!

Take care of one another and if you're keen to learn more about us check out the info below;

How do I use the Kai Collective?

1. Identify someone in need of love and support
2. Collect a meal or two from the MHCC foyer freezer
3. Deliver the meal to your friend and make the world a little kinder...

How can I help the Kai Collective?

- By gifting our meals out into our community.
- Donate to help support our food costs: NBS 03-1354-0423793-00
- Volunteer, by joining our Facebook group 'The Moutere Kai Collective' or email Anna – haddonanna@gmail.com



THE Mortgage SUPPLY CO. NEW ZEALAND



Want a better chance of a loan approval?

Competitive interest rates?

Or just have mortgage rated questions?

Get in touch

Vanessa McGovern

Your local Mortgage Supply specialist

022 313 6649

vanessa@mortgagesupply.co.nz

Vanessa McGovern gives financial advice through her company Crest Mortgages Limited that trades as The Mortgage Supply Co.



Tasman Earthworks & Construction operate throughout the greater Nelson and Tasman region, offering a wide range of excavation and construction services.

EARTHWORKS

- All site work and general excavation
- Foundations and footings
- Augering work and hole boring
- Landscape shaping
- Trenching
- Driveways and pathways

CONSTRUCTION

- Qualified Licensed Building Practitioner (LBP)
- All general carpentry work
- Renovations and alterations
- Retaining walls and fences
- Decks and patios
- Property maintenance

We offer a personal and tailored service to meet your needs

Contact us today for an estimate for your next project.



027 385 5998

www.facebook.com/tasmanearthworks www.instagram.com/tasmanearthworks



info@tasmanearthworks.co.nz

tasmanearthworks.co.nz

LOOKING FOR AN AGENT WHO ACTUALLY DOES REALISE ITS ALL ABOUT YOU?

WE LOVE WHAT WE DO, AND YOU WILL TOO WHEN YOU SEE OUR FIXED FEES AND FABULOUS RESULTS

THINK WHAT YOU COULD DO WITH THAT EXTRA MONEY IN YOUR POCKET...

We would highly recommend Debbie Watson for her great personality and ability to listen to her clients wishes and concerns.

Jan and Kevin

Debbie stood out to us, above all other agents, from the start, with her genuine care for us and our home

Claire and David

Thinking of selling? Give Debbie a call, you won't regret it!

021 462 629 | www.yourealty.co.nz | debbie@yourealty.co.nz

YOU.REALTY™

Licensed Agent REAA 2008

Western Ranges

Raw Honey



GLYPHOSATE FREE

From the remote Baton Valley, bordering the mountainous Kahurangi National Park, a small family business produces delicious, raw honey in glass jars. Buy with confidence knowing it has been independently tested and verified as Glyphosate free.

www.westernrangeshoney.co.nz

Western Ranges

Raw Honey



CHRISTMAS TREE BEESWAX CANDLES

Made with 100% pure New Zealand beeswax, a beautifully detailed Pine or Douglas Fir will make a perfect addition to your festive table this Christmas. With no added colour or fragrance, these long-burning candles have a beautiful natural honey aroma.

www.westernrangeshoney.co.nz

News from Māpua Bowls Club

THE WRITE BIAS

The weather hasn't played fair as the members await the nod from our greenkeeper that the new green is fit for play. But we are very close and the revised planned opening on Monday 28th November is eagerly awaited. Cotula is a weed that is used for bowling greens in much of New Zealand and as the cotula grows in Māpua, so too do various other unwanted weeds. A couple of working bees had some members down on their knees digging up toadrush; many thanks to them and hopefully the toadrush invasion has been thwarted.



Despite not being able to practise at home, plenty of bowling has been happening around the area. Roll up sessions every Wednesday at Motueka have been well attended, teams are playing in other club's tournaments, some members have entered Centre events and Māpua fielded men's and ladies teams in the annual Town v Country clubs challenge. Country clubs won the Men's competition and

Town, the ladies. Although only two games have been played so far, rain intervened in the other matches, Māpua has 100% record in the Saturday President's Trophy. This competition continues throughout the season and we will strive to maintain our unbeaten record.

When the Club is up and running properly we would be very happy to welcome new members or spend some time with anyone who would like to give lawn bowls a try. Plenty of equipment and help is readily available.

For any information about bowling, coaching or booking the clubhouse and facilities, please contact the secretary, Di Blanchet on 03 540 2627 or check out our website, sporty.co.nz/mapuabowls

Sue England



Hullo Folks! Urgent.

Peaceful healing accommodation
needed in Tasman.

Considering:

- a) Land Share for Tiny Home
- b) possibly long-term house-sitting until a) achieved.

Have dog, cat, references.

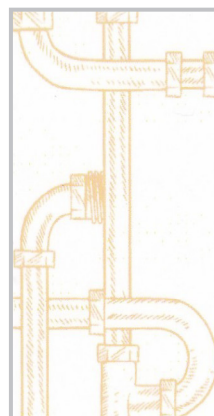
Sophie 0276440905
Thanks

CRUX

ADVICE & ACCOUNTING

Nathan Silcock
Director

M 021 154 1333
P 03 539 0645
E nathan@cruxadvice.co.nz
PO Box 494
Nelson 7040



MyPersonalPlumber

Alex Bint
0800 444 343

027 542 4329
alex@mypersonalplumber.co.nz
www.mypersonalplumber.co.nz

1366 Moutere Highway,
RD1, Upper Moutere, 7173



NTC
Nelson & Tasman
Construction

ALL BUILDING WORK

LARGE OR SMALL
NEW BUILDS • SHEDS • REPAIRS
ALTERATIONS
DESIGN & PLANNING SERVICE
DIGGER & DRIVER HIRE
EXPERIENCED LOCAL
LBP BUILDERS

0211 408077
ntconstruction@xtra.co.nz
www.nelsonandtasman.co.nz



**ELECTRICAL
WORX** 2017 LTD

03 528 0075

"FOR ALL YOUR ELECTRICAL NEEDS"
DOMESTIC | INDUSTRIAL | COMMERCIAL

Serving our community for 35 years

Heatpumps- Supply/Install/Servicing

Domestic
Commercial
Industrial
Irrigation
Solar - On/Off Grid

Give us a call today for a free quote



Tile It

*Custom Tiling
Waterproofing
Wood Flooring*

Tom
021-0485649
03-5432644

Quick Cut Lawns



**Weed Eating -
Ride-On lawn Mowing**

Call Allan 0225850047

Our latest news & adventures

Matua Mike Elkington Recipient of Supreme Recreation Award

We were thrilled to hear that kaiārahi of our kaupapa Māori programmes, Matua Mike Elkington is the 2022 recipient of Recreation Aotearoa's Te Tohu Manu Kura Supreme Outdoor Award for his outstanding mana and leadership in outdoor recreation. Matua Mike has worked for Whenua Iti since 2014 and his passion lies in uplifting the mana of tamariki and rangatahi to embrace te ao Māori and supporting rangatahi Māori to see that they can aspire and achieve their aspirations. Ka mau te wehi, Matua! We have known for a long time what a taonga Matua is to our rangatahi, it's so wonderful to see his recognition. Ka nui te maioha me aroha mō tō mahi mīharo.

School Holiday Programmes

It feels like summer! We have some awesome holiday programmes running for tamariki from age 7 - 16yrs to explore our beautiful wilderness locations, have a go at completing different challenges supported by our instructor team and meet new friends. Places are filling up, and we'd love to see familiar faces on the programmes from our local schools! A big thanks to funding from Rātā Foundation, Ministry of Youth Development, Lotteries Communities and Sport Canterbury for helping to make these programmes happen. To enrol, head to our website - www.wio.org.nz

Moutere Catchment Project

Thanks to everyone who has turned up to the recent potting up days! We have lots of plant babies in our community nursery who will be ready to head out to the whenua next year. Another benefit of the nursery is that students attending programmes on site get the chance to contribute to the project, which helps connect them to their local environment and be active for nature. Thanks to Weave, TDC & NZ Landcare Trust for recent funds and/or support to keep this mahi going!

Students return as leaders

A highlight of this term has been having graduates of our Manaaki Tāpoi programme return as leaders on our waka journeys! Ngā mihi nui ki RUIA mō tō tautawhi ki ngā rangatahi. Thanks to RUIA for funding opportunities for our students to further their journey in te ao Māori. It's fantastic to see them return as young leaders, confident to share their knowledge and help uplift others.

The Team at Whenua Iti.



Matua Mike with students on a tuatara encounter



We're loving the new kayaks thanks to Foodstuffs Community Trust!

We'll see you out there!

www.wio.org.nz



architecture studio | mapua



Simone Wenk
Reg. Architect (Germany)
LBP Design 2 (NZ)

*New Homes ·
Renovations ·
Residential ·
Light Commercial ·
Sustainability ·*

Contact me about your project
Shed 4, Mapua Wharf
www.architecturemapua.co.nz
03 540 3282 / 021 1049 039
simonewenk@xtra.co.nz

{ the basin }
BOUTIQUE HAIRDRESSING
APPLEBY, NELSON

all colour services include
style, cut, blow-dry, toners
& colour lock treatment.
(no hidden costs)

12 Research Orchard Road,
Appleby, Richmond

P 022 354 8771
E louise@thebasin.co.nz
f @thebasinNELSON

www.thebasin.co.nz


**Wishing everyone a very
Merry Christmas 🎄 and
a fabulous 2023 thanks
to all my amazing clients
for there loyalty and
support**




Horse Cover & Gear Repairs

Horse Cover Washing
Prompt Service
Good Rates
Contact Lawrie
1350 Moutere Highway
Ph: 03 543 2234
021 208 2192

Beef Calves for Sale
Angus, Hereford, Murray Grey X
Up to 5 months old



Ph Colin Wratt
027 543 2861

Functional Fertiliser

Growing Smarter with Carbon Positive Farming

Supplier of CalciZest & DoloZest

Currently being used on pasture, horticulture, and viticulture

The benefits

- Increased weight gain
- Reduction in pest and disease pressure
- Stronger clover/non reliance on synthetic N
- More energy per kg of dry matter resulting in higher levels of production
- Grow longer into a dry spell and recover more quickly
- Increased carbon sequestration reduces greenhouse gas emissions.
- Builds pasture cover for Winter



Image above shows the same soil type, but paddocks separated by a fence. The black soil has a higher carbon content, and the brown soil is from an area that has regularly received high urea inputs.

Stores around New Zealand

- Te Teko
- Taupo
- Motueka
- Rolleston
- Oamaru

CalciZest

CalciZest is a unique soil improver containing calcium, bio-carbons and selected microbes for plant growth and soil health.

DoloZest

Dolomite is a natural soil conditioner. A synergy is created by blending with the unique Zest component which makes it a fast-acting magnesium fertiliser and kick-starts the process of building soil humus.

Contact your local distributor now for further info

03 528 6344 | www.functionalfertiliser.co.nz

St Paul's Lutheran Community Church



Celebrations at Neudorf Winery 2021

St Paul's Lutheran Community Church and Friends would like to invite you to join us in celebrating the birth of Jesus this Summer.

December 18th Carols in the Vineyard.

Join us at Neudorf Vineyards at 6pm for an evening of carolling. You are welcome to bring picnic snacks and the cellar door will be open. Please don't BYO wine and beer.

Christmas Eve at St Paul's

7pm Kids and Carols Our local children will present the Christmas story in their own entertaining and unique way. There will also be another opportunity to dust off the singing voice and carol with us.

11:15pm Reflective Service The late night slow down, quiet, calm and candle lit. It's a perfect time to stop and reflect on the year and the meaning of Jesus' birth.

Christmas Day at St Paul's

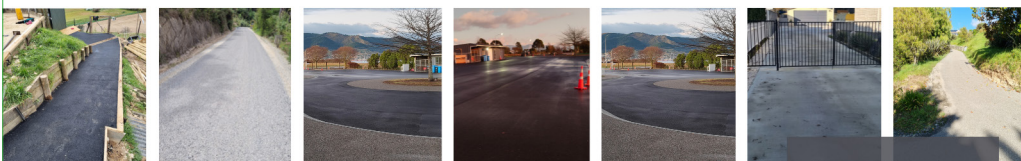
10am For unto us... With the presents opened and the breakfast bubbles supped you are welcome to join us in celebrating the birth of Jesus, quite literally God's gift to the world!

Wherever you may be and with whomever you spend these Holy-days with, may your time be blessed, your relationships strengthened and your hearts, minds and spirits be refreshed. Merry Christmas and God's blessing to you all from St Paul's Lutheran Community Church.



Driveways. Our specialty, your choice.

Asphalt and Chip Seal - Concrete - Decorative Concrete - Decorative Chip



Free Quotes

03 528 6344 | 99 King Edward Street | info@concrete-metals.co.nz

Bach to rent in Golden Bay

"Wainui Getaway"

*3-bedrm comfortable bach

* Take own linen

For bookings and/or more information

email Sharon on:

s.beuke@gmail.com

or text 027 432 8145



TBSI tasman bay
SCAFFOLDING LTD

**THE ONLY
MOTUEKA BASED
SCAFFOLDING
COMPANY**

**Give us a call 021 436 832
or email tasmanbayscaffolding@gmail.com
today to discuss all your scaffold requirements**

scaffolding hire for all budgets



**Providing gentle
guidance when you
need it most.**

**Simplicity
Funerals**
Simply respectful. Simply affordable.

Anna Loach
Manager / Funeral Director
Dip FD Reg. FDANZ

**NELSON & TASMAN WIDE,
WE'RE PART OF YOUR COMMUNITY**

Phone 03 929 5145 | 276b Queen Street, Richmond
nelson.simplicity.co.nz



A great job at a GREAT Price!

**SUN
ELECTRICAL**
Phone: 03 540 2367
www.sunelectrical.co.nz

124 Aranui Rd
Mapua, Nelson 7005
sunelectrical@xtra.co.nz

Domestic
Industrial
Commercial
Caravan WOFs
Solar Power Systems

**Our highly skilled and experienced
electricians can provide solutions to
meet your electrical needs**

- New house/shed wiring
- Rewiring
- Alterations and repairs
- Hot water elements and thermostats
- Energy saving solutions
- Power bill forensics
- Garden and outside lighting
- Solar power systems
- Caravan electrical warrants
- Sewerage and pumping systems
- Test and tag
- Switchboard upgrades and replacements
- Oven and store repairs
- Urgent breakdowns
- Industrial wiring and maintenance

www.sunelectrical.co.nz



Heine's
Cartage and Contractors

**We have trucks, excavators, a dozer,
a grader, and the expertise to do all your
cartage, drainage, building site &
foundation, roading, and subdivision work.**

40 years of local knowledge
and experience in the transport and
contracting industry

**Phone Wayne on 03 5432 788
027 430 2725**

**Or call in at our workshop and office at
1455 Moutere Highway
(by the firestation)
UPPER MOUTERE**

Vet Helpline

Getting pet-prepared for summer!

Yippee, summer is here! Here are some things to think about for our pets to avoid any unexpected complications and enjoy the summer:



- If you are going away, are your pets' vaccinations up to date? Vaccinations for respiratory viruses in cats, and Parvovirus plus Canine Cough in dogs must be up to date in order to stay in boarding facilities. Call us for advice if you're not sure and don't leave it until the last minute!
- If you are going away leave contact numbers for your vet as well as your mobile phone number with your pet carer. Have a chat so it's clear what your expectations are for your pet if something goes wrong, especially if you are not able to be contacted. Phone us if you would like to add any details to your client record. If you are taking your pet with you, remember all their bits and pieces including any medication.
- Most of us know that chocolate is poisonous for dogs. There is definitely more chocolate around at Christmas so remember to keep it out of reach of your dog. Remember dogs are very good at finding the wrapped chocolate under the tree!
- Beware of novel objects which could be swallowed by your pets such as Christmas tinsel, strings from the roast, kebab sticks from the barbecue, fish hooks/fishing line (often attached to a fish!) and potentially obstructive food such as chop bones, corn cobs and peach stones.
- Take care giving your dog leftovers from the BBQ or roast – bones, large amounts of fat and onions can all cause serious internal problems for dogs.
- Grapes, raisins and sultanas can be poisonous for dogs so no Christmas cake either!
- Another food-related hazard is old food that your pet might find in compost heaps, rubbish bins and out on walks. There are millions of weird microbes growing in these places that if eaten by your pet (especially dogs) can cause all sorts of symptoms from tummy upsets through to poisoning and seizures.
- Toxic algae are a warm weather hazard in our rivers. It's safest to avoid the rivers in summer and head to the beach instead.



TOWN & COUNTRY
VET

"...for all creatures great & small..."

**Regular Moult visits
discounted mileage
T&Cs apply**

Ph 544 1200

info@tcvet.co.nz * www.tcvet.co.nz

**25 Edward Street, Wakefield
35 McGlashen Avenue, Richmond**

24 hour emergency vet

- Heatstroke is common over summer particularly in larger dogs. NEVER leave dogs in the car on a hot day, even in the shade with windows down. Offer frequent drinks/stops on journeys. Restrict exercise to cooler parts of the day. Limit the length of walks especially for young energetic dogs, old dogs and dogs with medical problems. Provide shade for dog kennels and rabbit/guinea pig cages.
- Clipping long haired pets can prevent problems such as overheating, soiling, skin infections and grass seed problems. We often clip the underside/belly of long haired cats, and advise clipping under ears and around the feet of long haired dogs. Some long haired dogs which aren't traditionally clipped (e.g. Border Collies) are much more comfortable and active, even if they do look a bit odd!
- Check your dog's paws, ears, 'armpits' and groin daily for grass seeds. This is particularly important for fluffy dogs especially spaniels, poodles and all their crosses. It may seem a hassle to do this but it can be an expensive, time-consuming and painful process to find grass seeds once they are inside your dog!
- Warm weather accelerates development of flea eggs and larvae so flea prevention is important. We have many products available to suit your pets and their lifestyle. Some products now last six months or more so it's easy to keep your pet and house flea-free.

Merry Christmas and a happy new year from all of us at Town and Country Vets

Brenda Halliwell, T & C Vet

PGG Wrightson Real Estate

Introducing Doug Smith

I have been living and working locally since 2008.
Use my experience, honesty, integrity and work ethic to deliver you the highest value for your number one asset.
Competitive commission and marketing tailor made to your individual requirements.

I welcome your call for a no obligation appraisal and any advice I can give you.

**Professionalism
Knowledge
Competitive Pricing**



M 027 543 2280
douglassjcsmith@pggwrightson.co.nz

www.pggwre.co.nz Licensed REAA 2008

Helping grow the country



**Water Features
Paving
Rock Work
Irrigation
General Landscaping**

Michael Hardy
Ph: 021 443 908
A/H: 03 543 2555

Hon Damien O'Connor

MP for West Coast-Tasman

Minister of Agriculture, Biosecurity and Food Safety
Minister for Rural Communities
Minister of State for Trade and Export Growth



Freephone: 0800 326 436

181 Tainui St, Greymouth
Phone 03 768 7189

208A Palmerston St, Westport
Phone 03 789 5481

234 High St, Motueka
Phone 03 528 8190



/damienoconnormp



@damienoconnormp



Labour

Authorised by Hon Damien O'Connor, Parliament Buildings, Wellington



Motueka Electrical Limited
027 588 5774 or 03 528 4488
<https://www.motuekaelectrical.com>

LUUK HERMENS

027 588 5774

03 528 4488

motuekaelectrical@mail.com

HEAT PUMP SUPPLIER & ACCREDITED INSTALLER

Evidence, Experiments and Beer

I used to make beer. After a few awful brews I was motivated to improve the quality of my beer using an evidence-based approach.

I began by talking to homebrewers. The information they conveyed was based on retelling an experience. This is anecdotal evidence, which in general is considered weak as it is unverified, although it can shed light on factors to consider and things to try. An example is a brewer who said their beer became more consistent after they changed sanitizer. How do I know if this anecdotal evidence is accurate? Is the brewer's recollection reliable? Did the brewer only change sanitation? Were enough beers consumed to judge consistency?

Observing a brewer carefully and noting everything they do that might contribute to their beer is a type of case study. This is where research is done into a person, group, or item of interest with the aim of finding principles that may apply to a wider population or other items of interest. This is much better than an anecdote, although not the right tool for establishing cause and effect. I won't know if it was the ingredients, the equipment, the method, or something else that causes a particular quality that I want to replicate.

When I thought of ways to improve my beer, I ran quasi experiments. These have many of the features of true experiments but lacks a control. I changed one thing from my previous brew (e.g. the temperature the yeast is added), then while making the

beer I recorded everything I thought relevant. Friends were invited to be the tasting panel and give feedback. From this I started to form ideas about cause and effect, although without a control, I could not be sure as I might have done something inadvertently different apart from the one variable I was investigating.

An improvement was conducting controlled experiments by making two brews that were as close to identical as possible apart from a single variable (e.g., the timing of when the aromatic hops are added). When my friends drank the beer, I asked them to fill in a questionnaire about the two beers. Some problems remained as they seemed too polite to give me honest feedback and the first beer would often be rated as better. The order of the tasting seemed to have affected their judgement.

A randomised double blind controlled experiment is about as good as it gets. Like the controlled experiment above I added the extra steps of getting someone who didn't know which beer had the altered variable that I was interested in to serve and give instructions. Most studies that are randomized split the participants into two groups selected by chance. In this case, the two groups were separated by which beer was served first. This was done to reduce bias from the participants and from me. If I were to write up the methods and results and submit it to the scrutiny of expert homebrewers, I would have a peer review. If another homebrewer conducted the same experimental brew that I submitted and



confirmed my findings I would have a replication.

I have barely scratched the surface of this topic. My point is, not all evidence is of equal quality. Anecdotal evidence can be informative, but not considered reliable. A well conducted peer reviewed and replicated experiment is very compelling evidence. Scrutinizing evidence is a skill, and like any other skill, we get better with practice. The challenge is to apply the same level of scrutiny to evidence we like as to evidence we dislike... and to make better beer.

Suggested further reading:

Andy Brunning (2015) A Rough Guide to Types of Scientific Evidence <https://www.compoundchem.com/2015/04/09/scientific-evidence/>

Zafir Ivanov, 2022

Feedback can be sent to:
noideaisabovescrutiny@gmail.com

After all the winter rain, we whirl into summer welcoming more...

Moutere rain

Drench our garden - soak its mulch, quench our native tree planting's thirst.

Help our 'Wildflower Beneficial Insect & Pollinator Blend' to grow, so to feed the butterflies, hoverflies, ladybirds and bees.

Replenish our tanks - they can overflow, but please, no more grass to mow.

B. Adie

Trade and Professional Services List

Please support our advertisers

What	Who	Contact
Accommodation	Tasman View Accommodation	www.tasmanview.co.nz 021 119 2239
Accommodation	Wainui Getaway Golden Bay - Sharon	027 432 8145
Accounting Bookkeeping	Crux Advice & Accounting Ltd	03 539 0645 Mob: 021 154 1333
Acupuncture	Dorothea Tebbenhoff	027 214 6444
Architectural Designer	Simone Wenk	021 1049 039 AH: 03 540 3282
Barley	Whole barley 25kg bags	021 454 731
Builder	Andrew Eggers	027 446 0739 AH: 03 543 2757
Builder	Jason Frater	021 743 497 AH: 03 528 0337
Builder	NTC	021 140 8077
Caravans	Kina Campers	www.kinacampers.co.nz
Chiropractors	Tasman Bay Chiropractic	03 544 4554
Child Care/Early Childhood Education	Country Kids Manager - Nickie	www.countrykids.org.nz
Clothing	Jacqui's Pre-loved and More - Jacqui	027 346 4071
Composting Toilets	Biolo - Rick Stokes	021 1029 098 / 03 526 7882
Contractor & Builder	Tasman Earthworks & Construction	021 119 2239 / 027 3855 998
Contractors	G & R Contracting - Graham Hyde	021 064 8625
Contractors & Cartage	Wayne, Heine	027 430 2725 AH: 03 543 2788
Electrician	Electrical Worx	0800 967 948
Electrician	Motueka Electrical - Luuk Hermens	027 588 5774 AH: 03 528 4488
Electrician	Sun Electrical - Tony	03 540 2367 Mob: 027 3784 580
Food for Community (Food Bank)	Kai Collective	021 2626 675
Funeral Directors	Simplicity Funerals - Anne Loach	03 929 5145
Hay and baleage production	Mark Carey Contracting	021 454 000 AH: 03 526 7004
Health & Wellbeing	Greenworld Health & Lifestyle	03 528 7262
Honey	Western Ranges - www.westernrangeshoney.co.nz	sales@westernrangeshoney.co.nz
Horse cover/gear repairs	Lawrie	03 543 2234 Mob: 021 208 2192
Kitchens	Moutere Village Kitchens - Steve Farmer	021 0839 1206
Landscaping	Mow-tivated Lawn & Garden	027 599 3304
Landscaping	Hardy Landscapes - Michael Hardy	021 443 908 AH: 03 543 2555
Landscaping	Stonescape	03 528 6344
Lawns	Quick Cut Lawns - Allan	022 5850 047
Lawyer Legal Services	Pitt & Moore	03 543 9090
Lawyer Legal Services	The Legal House - Yvonne Watson	03 548 7839
Massage - Bowen Therapy	Better Bodies - Suzanne Clark	021 1414 937
Mechanic	Moutere Motors	03 543 2707
MP	Damien O'Connor, Labour Party	0800 DAMIEN
Caravans	Moutere Caravans	03 543 2668
Painter	Vision Painting Tiling & Plastering - Glen	020 4091 7929
Play Group	Karen Barnett	021 252 2657
Plumber	My Personal Plumber - Alex Bint	027 542 4329 AH: 0800 444 343
Pub/Restaurant	The Moutere Inn	03 543 2759
Real Estate	Bayleys - Matt Galvin	027 768 6288
Real Estate	PGG Wrightson - Doug Smith	027 543 2280
Real Estate	You.Realty - Debbie	021 462 629
Recreation Centre	Moutere Hills Community Centre	03 543 2516
Roading and Civil work	Concrete & Metals Tasman Bay	03 528 6344
Scaffolding	Tasman Bay Scaffolding Ltd	021 436 832
Tiling	Tile it - Tom	021 048 5649 AH: 03 5432644
Upholstery	Adventure Canvas, Auto / Marine - Caleb Hill	027 3620 048
Vet	Town & Country Vet	03 544 1200
Water	Water Filtration & Pumps - Frans	0275 281 366
Youth Group	Tessa Werner	022 101 2276
Yoga	Yoga, Mapua - with Martin	027 614 5936

