

# The Grapevine

AUGUST 2022

MOUTERE HILLS COMMUNITY NEWS

## Inside this issue:

- 2 Grapevine Information
- 3 Sarau Community Trust
- 5 Matariki
- 7 MDBA Update
- 8 Moutere Hills Community Cntr.
- 11 Mapua Bowls  
Sarau Winter Sale
- 13 Whenua Iti
- 15 Te Mamuku Drive Planting  
Moutere Fire Brigade callouts
- 17 Community Noticeboard  
Poisonings - Vet Help
- 19 Steelman, Strawman
- 20 Trades & Professional LIST

## Special points of interest:

The big 'Sarau Winter Sale' is on July 30th & 31st at the Moutere Hills Community Centre, see page 11 for more info.

Thank you for reading the Grapevine and for supporting the advertisers.

**FREE DELIVERY**  
Donations appreciated.



*The Sellers family at Martin Rd*

## Changing Times

A pastor, a publican, a jewellery maker, a midwife, a beekeeper, winegrowers, firefighters and many inspirational artisans – these are just some of the folks Beverly Sellers has written about during her 12-year tenure as feature writer for The Grapevine. As she says, our region is full of amazing people doing amazing things.

Beverly was born in Zimbabwe and lived in Nigeria until age five, when her family moved back to the UK. Her parents bought a house in Hertfordshire, where she grew up and where her parents still live. She married husband Viv and lived and worked in London for ten years.

They wanted children but didn't want to raise them in London, so it was a

huge leap of faith when Viv accepted a job offer in New Zealand. They sold up, packed up and arrived in Wellington without ever having set foot in this country before – that's 25 years ago. For twelve years Viv worked as a creative director, initially for a design company and later for himself. Beverly had previous experience writing for magazines, so she continued freelance writing and then began working for Master Plumbers New Zealand, helping with their communications.

The next big change came in 2009, when Beverly and Viv decided to shift to the Moutere and enjoy the country lifestyle. They bought a bare five-acre section having fallen in love with the view of the Kahurangi ranges and went on to build a house and plant

*cont. pg3*

## PLACING AN ADVERTISEMENT

Thank you for advertising in the Grapevine—you help us cover the cost of producing and delivering this free community newsletter each month.

The deadline for each issue is the **15th of the month**. Please email your print-ready advert (JPG, PDF, or PNG preferable) to: [umograpevine@protonmail.com](mailto:umograpevine@protonmail.com)

### The following prices apply for advertising:

∞ Births, marriages, deaths, group or giveaway notices on the community noticeboard (25 words):

FREE

∞ 1/16 pg portrait 44 x 55mm: \$7

∞ 1/8 pg landscape 90 x 55:  
/ portrait \*44 x 127: \$14

∞ 1/4 pg portrait 90 x 127:  
/ landscape 185 x 55:  
/ landscape \*136 x 67: \$28

∞ 3/8 pg \*136 x 127: \$42

∞ 1/2 pg landscape \*185 x 127: \$56

{\*if available - limited to a 3 month listing}

To make payment please email:

[umograpevineinvoices@gmail.com](mailto:umograpevineinvoices@gmail.com)

### Sending us articles of interest

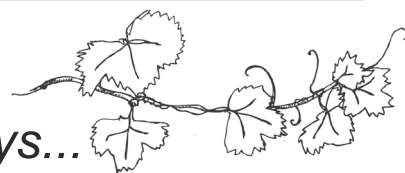
We warmly welcome contributions to The Grapevine from all residents in the Moutere and Tasman regions. You make the newsletter an interesting read! There is no cost for having your articles published if you are telling the community about a fundraising venture. However we do appreciate a donation from commercial ventures to help us cover our printing costs—see email address above to get bank details.

Archived coloured copies of the Grapevine are available at [www.mouterehills.org.nz/community/the-grapevine](http://www.mouterehills.org.nz/community/the-grapevine) courtesy of the Moutere Hills Community Centre Staff. Grapevine circulation is 1400 copies. This issue has been constructed by volunteers: Rachel Field, Edith Bulle, Beverly Sellers, Jenny Leith, Sharon Beuke, Bessie Adie, and Kirsty Vanderwerff.

### Disclaimer

Views expressed in articles in The Grapevine are not necessarily those of The Grapevine team or its editor. While every effort has been made to ensure the accuracy of the information included in this publication, The Grapevine takes no responsibility for errors or omissions or for any consequences of reliance on this information. All adverts are required to present a name or contact details so that people can respond directly should they have any queries or concerns. Publication of advertising material implies no endorsement of either a product or a service.

## Grapevine Says...



One of the benefits of living in a small area such as ours, is the feeling of community, support and care for our neighbours whom we may know through places such as school, sport or local groups. The Kai Collective is an excellent example of this: locals caring for locals in times of need. There are also the unheralded helpers, those who quietly beaver away on their own. Since the Sarau festival has been in recess (due to Covid) Jenny Leith has single-handedly organised several quiz evenings at the Sprig and Fern (in both Mapua and Motueka) to raise funds for the Sarau Trust which, over many years, has donated thousands of dollars to local groups such as Kai collective, Country Kids and the Moutere Hills community Centre. Thanks to Kai Collective, Jenny and the many others of you who make our community a special place in which to live.

## CRAFT & CONNECT

Would you like to join our

CRAFT & CONNECT group for a social afternoon?

We meet every 2nd and 4th Thursday of the month from 1.30-3.30 pm at the Moutere Pub.

Everyone tinkers with her own project. Any kind of craft is welcome.

Car pooling from Motueka is possible.

For details email [renate@fairyvalley.net](mailto:renate@fairyvalley.net)





thousands of native trees plus a couple of hundred exotics.

Their two children Hal and Connie, aged ten and eight at the time, went quickly from being city kids to country kids, attending Upper Moutere School until their high school years. Beverly continued working remotely for Master Plumbers, which has worked out well – she is now also the editor NZ Plumber magazine.

Being Wellington focused for work didn't give her the community involvement she wanted, until a visit to the village store and a conversation with Tanya Doty led Beverly to join The Grapevine committee and begin writing local stories.

She has loved the interaction with the Grapevine team, had a lot of fun and met many interesting and talented people. She believes our local mag is a great product produced by a great

team of dedicated volunteers all doing their bit. Eighteen months ago, Beverly stepped back from writing and has been delivering the finished magazines to the posties and various local outlets for distribution.

And the most recent change for the Sellers team? With both children grown and gone to work in Wellington, they have just sold their Upper Moutere home and moved into central Nelson. They are looking forward to renovating their new house and being near to what the city has to offer – shops, cinema, restaurants and cafés – and getting used to having near neighbours once more!

The Grapevine team wishes to thank Beverly for all her years of contributing and wish her well for the future – we will miss you!

## STONESCAPE Garden Supplies



Decorative Chip | Bark | Compost | Aggregates | Firewood |  
Pavers | Garden Supplies

Book a delivery or visit our great yard.



03 528 6344 | 99 King Edward Street | [info@stonescape.co.nz](mailto:info@stonescape.co.nz) | [www.stonescape.co.nz](http://www.stonescape.co.nz)

## Job Vacancy

**Te Whatu Ora**  
**Health New Zealand**  
Nelson Marlborough

**Registered Nurse**  
– Fixed term contract - Aged Residential Care  
(Tasman District)

*Are you recently retired, looking for a short-term change or wanting to support the age care sector?*  
**30-40 hours per week (3-6 months fixed term contract)**

Te Whatu Ora Nelson Marlborough are seeking a registered nurse who would be willing to be employed on a fixed term contract to one of the aged care facilities in Tasman for 12 to 26 weeks. You will receive a full induction and will be provided with any required training to ensure safe practice. You will have NZNC registration and a current practising certificate. Support with transport and accommodation may also be considered.

Elderly people typically have multifaceted and sometimes complex health issues. The role will require your skills and knowledge across areas such as: neurology, wound management, respiratory, urology, pharmacology, palliative care, stroke, emergency medicine, gynaecology, diabetes management, stoma management, pain management and much more. Aged care workers cover a wide range of duties during each shift. As a Registered Nurse you will be required to; give medication, change dressings, check vital signs as needed, discuss an end of life care plan, develop a care plan with a person and their whanau as well as make sure everything is okay with each individual person and their whanau.

For more information, contact Chelsea Martin on [chelsea.martin@nmdhb.govt.nz](mailto:chelsea.martin@nmdhb.govt.nz).  
Note - all NMH staff are required to be fully vaccinated for COVID-19.



green world **health**  
& Lifestyle

Sole Supplier of  
**Dr. Hauschka**  
Products  
in Motueka.



Open 7 Days



177 High Street, Motueka

Ph: 03 528 7262

E: [greenworldhealthandlifestyle@gmail.com](mailto:greenworldhealthandlifestyle@gmail.com)



**Tasman Bay  
Chiropractic**  
Keeping you in the game since 2002

Monday-Saturday  
03 544 4554  
64 Oxford St Richmond

Three chiropractors available

Referrals, families and  
all new patients welcome

Visit our website or call for  
more information

[tasmanbaychiropractic.co.nz](http://tasmanbaychiropractic.co.nz)



Find us on 

Yoga with Martin

Mapua Hall

Beginners: Tuesday, 7.00-8.00pm

General: Friday, 10.30 – 11.45am

[macocam@gmail.com](mailto:macocam@gmail.com)

027 614 5936



Integrative  
Wellbeing  
Kahurangi

Massage | Bodywork

Gary tunes into the subtle energy body to facilitate a deep physical and energetic release through a combination of deep conversation, massage and energetic bodywork.

**Gary Brian Smith**

Grad. Dip. Psychology | HTP | Cert. in Health Science

To make a booking: ph/txt 02102778363

Home Clinic based @ Riverside Community

Connect | Release | Integrate | Thrive

For more details find us on Facebook:



Integrative Wellbeing Kahurangi



**Dorothea  
Tebbenhoff**  
Acupuncture



**Licensed Acupuncturist**  
MAcNZ, Acc Provider

Re-located to Motopolis building

31 Wallace St, Motueka

**027 214 6444**

[www.tasmanacupuncture.co.nz](http://www.tasmanacupuncture.co.nz)



# Matariki

My interest in Matariki was kindled by several events: activities in the Motueka library; a theatrical storytelling experience; star-gazing as part of a workshop on bio-dynamic principles at the Motueka Steiner School, and Matariki lantern festivals in schools. Coming from Europe, I was unfamiliar with the vast Southern sky, so I started to collect some information.

This year of transformation due to Covid and the many changes required from us as global players can be used for a more conscious openness to other ways of thinking. The time of Matariki for me is such a time as Matariki signals a new beginning, a message of wellbeing and health connected with the land, the ocean, the water and the ancestors.

For me, coming from the Northern hemisphere, these concepts ring bells from way back, connecting me with my own rudimentary understanding of the cosmos, a connection I had lost. I am now rediscovering principles and methods of care for the land/water/air, as well as appreciation for my ancestors anew.

My current learning about bio-dynamic practices, following the bio-dynamic moon calendar in my efforts to grow food and care for my fruit trees, is making me feel connected with Māori approaches and our shared efforts to rediscover traditional values and give them room in our lives. As a remedial teacher I feel a great obligation to carry this knowledge, as far as I can actually convincingly live it myself, and share it with children, inspiring them to experience and appreciate nature, and contributing to make the world a better place.

I think we, as adults can actually carry this approach together across all boundaries and different backgrounds



and use our connection to the land, sea, rivers and sky and all the beings living in it to develop heart connections, way beyond mere commercial considerations and expectations. We need to show the next generation that our combined efforts are needed to save the world. How encouraging it will be for young people to understand and trust that there is a spiritual world backing up their contributions.

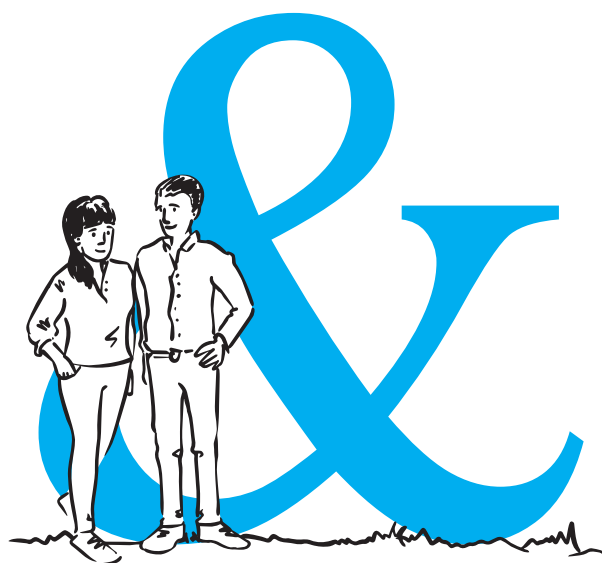
The traditional lore around the Matariki family is a valuable example of the ever present support of the spiritual world. The Māori version and world view, described by Rangi Matamua in “Matariki – The Star of the Year”, portrays the Matariki star cluster as a family, with father, mother and eight children, three male and five female, each of them carrying a specific characteristic and purpose in the world (details of these different qualities can be found on the internet or in reference books). It is interesting to note that the orientation that Matariki lore gave the Māori seafarers and food-growers throughout the year, is similar to that of Pakeha bio-dynamic food growers, following the New Zealand farming and gardening calendar, which orients itself

around the moon and constellations of stars and planets. We can develop new connections with the night skies and seasonal changes, observing plant growth and their responses to weather conditions and movement of the stars from night to night. It takes serious commitment to seriously learn from the skies and recognise different patterns and locations of stars, but it can become an inspiring endeavour when shared with others and using existing expertise connected, for instance, with sea travels following the stars over the wide southern ocean.

Edith Bulle

## References:

- Arnold, Naomi. Southern Nights. The story of New Zealand's night sky from the Southern lights to the Milky Way, 2019. HarperCollins Publishers (New Zealand).
- Matamua, Rangi. Matariki – The Star of the Year, 2019. Huia Publications.
- Riley, Murdoch. Wise Words of the Māori: Revealing history and traditions, 2013. Paraparaumu Viking, Seven Seas.



**We can help your  
business grow**

**PITT & MOORE**  
LAWYERS AND NOTARIES PUBLIC

**MOWTIVATED**  
Lawn & Garden LTD

For all your garden needs:

- ✿ Weeding & Mulching
- ✿ Pruning & Hedge Trimming
- ✿ Push & Ride-on Mowing
- ✿ Brush Cutting
- ✿ Green Waste Removal
- ✿ Lifestyle Blocks

Something you want done not listed above?  
**Give us call!**

Michael and Anita are a husband and wife team with a passion for providing excellent quality garden services. We are not afraid of taming wild gardens.



**027 599 3304**

No job too small, just give us a call. Free quotes!



**Jacqui Kennedy**

027 346 4071  
1855 Moutere Highway  
Upper Moutere  
{Opposite Harakeke Preschool}  
Opening Hours  
Thursday 2-8pm  
Friday 2-5pm  
Saturday 11-3pm  
Or By Appointment

Pre-loved good quality womans clothing.  
Top Labels including... Augustine, Trelise Cooper,  
Ketzke, Jane Daniels, WORLD to name a few....

*“beautiful atmosphere”*

For personal service and to support local, sustainable shopping, come visit Jacqui's 'Pre-loved and More' in it's quiet country cottage setting, surrounded by nature.

**BAYLEYS**

VINING REALTY GROUP LTD, BAYLEYS, LICENSSED REAA 2008

Whatever your property is worth,  
It's worth choosing Bayleys



**MATT GALVIN**

Your **Property** my **Priority**

027 768 6288 | 03 528 5242 | matt.galvin@bayleys.co.nz





Want to get in touch?  
Email us at:  
[mdba@mapua.co.nz](mailto:mdba@mapua.co.nz)

### August 2022

An official warm welcome to our two new committee members who came on board at the AGM. Moira Kemp owner of M K Insurances and a recent arrival from Christchurch who is looking forward to meeting as many of you as possible and is a big supporter of keeping it local wherever possible. She is looking forward to using her wealth of experience in business to help our members and community.

Neil Pomphrett, owner of Golden Hills Walnuts who also has a wealth of business experience under his belt and is passionate about being a part of the community and supporting local is looking forward to being an active member of the MDBA. All committee members are available to talk to, look on <https://www.mapua.co.nz/about-mdba/> for their contact details under

### AUGUST LUNCH & LEARN

WEDNESDAY 3 AUGUST, 12-1.30pm

REGISTER FOR THIS FREE EVENT - email Kirsten [mdba@mapua.co.nz](mailto:mdba@mapua.co.nz)

How to Thrive in Times of Challenge and Uncertainty. Three keys to being better prepared for internal and external changes in your business. This is an interactive workshop so bring a pen and paper and your lunch. *Cheers MDBA.*

NEED MORE MAPS OR DIRECTORIES? Email Kirsten now  
[mdba@mapua.co.nz](mailto:mdba@mapua.co.nz)

### BUSINESS MEMBER UPDATE

Jason has been a long time member of the MDBA and is still passionate about what he does and helping people create their visions...

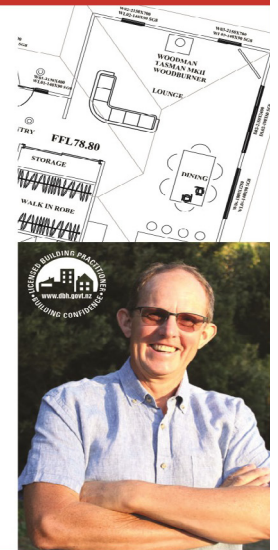
## From Concept to Consented Plans.

Jason has undertaken many unique design projects including passive homes, site specific designs, internal reconfigurations and extensions.

Many past projects have also been constructed by Jason which gives him the advantage of designing to your specific needs.

In addition to building design Jason is also qualified in landscape architecture, with most building applications now requiring a landscape design proposal this can also be prepared by him.

Contact Jason to discuss your next project and let him take it from concept to consented plans. Project management can also be undertaken for your complete piece of mind.



### JASON PRELLER

021 167 3803  
[kernow4construction@gmail.com](mailto:kernow4construction@gmail.com)  
[kernowdesign.nz](http://kernowdesign.nz)



Supporting local  
businesses since  
1992.



**CONCRETE  
& METALS**  
TASMAN BAY LTD

Asphalt | Concrete | Construction | Paving | Retaining Walls



03 528 6344 | 99 King Edward Street | [info@concrete-metals.co.nz](mailto:info@concrete-metals.co.nz)

Free Quotes

**water**  
FILTRATION  
& PUMPS

Frans van de Loo  
**0275 281 366**

[frans.wfp@gmail.com](mailto:frans.wfp@gmail.com)  
[waterfiltrationpumps@gmail.com](mailto:waterfiltrationpumps@gmail.com)



# MOUTERE HILLS COMMUNITY CENTRE



## Dear Community

*We have had a busy few months here at the centre. It has been great to see all activities being well attended and the facilities being well utilized. We have completed the fit out of the storage room which has created more usable space for equipment. We have also purchased some new equipment for the Community Fitness Centre to ensure we can cater for the increase demand. We are looking forward to an exciting third term!*

*Kind Regards Katrina, Adele, Keith, and Cindus*

## FROM THE MHCC BOARD .....

Due to changes to the Incorporated Societies Act and to clarify membership of Moutere Hills Community Centre (MHCC), we will be implementing the following criteria and benefits around membership for the 2022/2023 year.

### CRITERIA

- \* Membership will be valid for the year 1 July 2022 to 30 June 2023
- \* An individual must be at least 16 years of age
- \* An individual must reside within the wider Moutere Hills area (identified as being in the 7173 and 7175 postcode boundaries) and/or
- \* Access services of MHCC
- \* Pay an annual membership fee. This fee has been set at \$0 but from 1 July 2023 a nominal fee will be charged.

### BENEFITS

- \* The right to vote at the 2022 AGM (must be registered by 1 September 2022)
- \* The right to stand as a board member
- \* Discount on Fitness Centre Membership (beginning on 1<sup>st</sup> September 2022)
- \* Discount on Community Centre hire for personal bookings (10% discount)
- \* Discount on Fitness Class Concession Cards

To become a member of MHCC or to renew your current membership please visit our website [www.mouterehills.org.nz/membership](http://www.mouterehills.org.nz/membership) or email [katrina@mouterehills.org.nz](mailto:katrina@mouterehills.org.nz)

Thank you.

Moutere Hills Community Centre board.



Stall bookings open now for general and food vendors!

Visit [www.mouterehills.org.nz](http://www.mouterehills.org.nz) to book your site.

Spaces are limited so get in early to secure your site at this fantastic, family day out!

## COMMUNITY HISTORY EVENING

Join us for an evening of history featuring a talk about Prisoners of War in Europe during WWII and what life might have been like for men like the late Jack Craig of Upper Moutere

**Friday 26 August**

**Bar open from 7pm**

**Talk begins at 7:45pm**

Tea/ Coffee and supper provided- Gold Coin donation

*Please join us and be part of the Community  
Taking our History into the Future!*



## FEES INCREASE



Moutere Hills Community Centre is having to look at its operational expenses so that it can continue to provide a high-quality centre for the local community. The centre has not adjusted baseline fees for 7 years. In order to maintain this high quality facility and on-going maintenance it has become necessary to increase our rates for room hire, packages and fitness centre memberships. This will ensure our commitment to providing high quality services can be maintained to the required and expected standards.

The proposed increases have been compared with other facilities and we are confident that these rates remain highly competitive. The changes will become effective from the 1<sup>st</sup> September 2022. Membership of Moutere Hills Community Centre will entitle members to discounts from the advertised rates. Fitness Centre classes will be increasing to \$10 casual per class, or \$60 for a concession card. Check out our new rates in full by visiting [www.mouterehills.org.nz](http://www.mouterehills.org.nz).



**Phone: 543 2516**

**Email: [enquiries@mouterehills.org.nz](mailto:enquiries@mouterehills.org.nz)**

**Website: [www.mouterehills.org.nz](http://www.mouterehills.org.nz)**



# MOUTERE HILLS COMMUNITY CENTRE



## VOLUNTEERS WANTED

We are on the lookout for some wonderful community members who have some time on their hands and knowledge and/or skills in a particular sport that would be happy to run a new social sports activity. If this is you then please just pop into the office or call us on 543 2516

We currently offer volleyball, badminton, table tennis, basketball and touch!



## metaPRO HYBRID CLASS

Take your High Intensity Interval Training to the next level with new Speed, Agility and Quickness drills and training movements in a small group! Round out the session with some core and pelvic strengthening to ensure you leave having worked your full body!

Keep fit during the winter and kickstart your summer body now!

**Wednesdays 6:00-7:00pm**

**Free for Fitness Centre members, \$5/ class (with concession card) or \$7/ class casual (until 1 September)**

Registrations essential: visit [www.mouterehills.org.nz](http://www.mouterehills.org.nz) and register on the Fitness Centre Portal.

For more info contact Adele: [adele@mouterehills.org.nz](mailto:adele@mouterehills.org.nz) or 0275118826



## Stretch & Flex with Vicki

**Now 2 mornings per week!**

A fun and social low-impact class, designed to improve mobility, flexibility, and core strength to benefit overall functionality and quality of life. Beginners encouraged!

**Tuesdays and Thursdays 9:30-10:15am**

**Free for Fitness Centre members, \$5/ class (with concession card) or \$7/ class casual (until 1 September)**

Registrations essential: visit [www.mouterehills.org.nz](http://www.mouterehills.org.nz) and register on the Fitness Centre Portal.

For more info contact Adele: [adele@mouterehills.org.nz](mailto:adele@mouterehills.org.nz) or 0275118826



## New Schedule of Term 3 Activities Out Now!

Check out the schedule on our website or pop into the MHCC foyer to grab a copy.  
Here's a taste of some activities on offer this term...

### EDUCATION KINESIOLOGY

**Mondays 9am – 10am**

Kick-start your week with an anxiety free hour! Starts Monday 25<sup>th</sup> July for 10 weeks. Cost: \$10 per session (individual/ family). Contact Alexandra: 02041927724 or [mind.bodynbalance@gmail.com](mailto:mind.bodynbalance@gmail.com)

### PRE-SCHOOL MUSIC & MOVEMENT

**Mondays 9:30am—10:30am**

Come along and join Debbie for a fun and interactive session with your toddler / preschooler. Cost: \$2/ child

### PRODIGY DANCE

**Wednesdays from 2:15pm onwards**

Classes for all ages. A great way introduction to various dance genres. 10 weeks: \$70. Contact Amy-Rose on 0212207299 or [prodigydanceconz@gmail.com](mailto:prodigydanceconz@gmail.com)



**Phone: 543 2516**

**Email: [enquiries@mouterehills.org.nz](mailto:enquiries@mouterehills.org.nz)**

**Website: [www.mouterehills.org.nz](http://www.mouterehills.org.nz)**





Tasman Earthworks & Construction operate throughout the greater Nelson and Tasman region, offering a wide range of excavation and construction services.

#### EARTHWORKS

- All site work and general excavation
- Foundations and footings
- Augering work and hole boring
- Landscape shaping
- Trenching
- Driveways and pathways

#### CONSTRUCTION

- Qualified Licensed Building Practitioner (LBP)
- All general carpentry work
- Renovations and alterations
- Retaining walls and fences
- Decks and patios
- Property maintenance

We offer a personal and tailored service to meet your needs

Contact us today for an estimate for your next project.



**027 385 5998**

[www.facebook.com/tasmanearthworks](https://www.facebook.com/tasmanearthworks) [www.instagram.com/tasmanearthworks](https://www.instagram.com/tasmanearthworks)



info@tasmanearthworks.co.nz  
**tasmanearthworks.co.nz**



**Water Features**  
**Paving**  
**Rock Work**  
**Irrigation**  
**General Landscaping**

**Michael Hardy**

**Ph: 021 443 908**

**A/H: 03 543 2555**

*Western Ranges*

Raw Honey



**GLYPHOSATE FREE**

From the remote Baton Valley, bordering the mountainous Kahurangi National Park, a small family business produces delicious, raw honey in glass jars.

Buy with confidence knowing it has been independently tested and verified as Glyphosate free.

[www.westernrangeshoney.co.nz](http://www.westernrangeshoney.co.nz)

Whole Barley  
25 kg bags  
\$20 per bag



Phone 021 454 731 or 03 526 7004

**Horse Cover & Gear Repairs**

**Horse Cover Washing**

**Prompt Service**

**Good Rates**

**Contact Lawrie**

**1350 Moutere Highway**

**Ph: 03 543 2234**

**021 208 2192**



# News from Mapua Bowls Club

THE WRITE BIAS

Life behind the scenes continues at the Bowls Club during this winter period with maintenance work, restoring the green and grant applications. Members continue to meet every other Friday for a social evening and some of our bowlers enjoy friendly games on artificial surfaces at four of the clubs in the Nelson area.

The Board meets regularly to plan and prepare for the new season but before that commences in October, we have several fundraising events in support of the people of Ukraine. The first quiz night at the Sprig & Fern was held successfully on Wednesday 6th July and there will be a second one on 24th August.

Now we hope you will support our sausage sizzle and cake sale with all of the details on the following poster.

For any information about bowling, coaching, indoor winter socials or booking the clubhouse and facilities, please contact the secretary, Di Blanchet on 03 540 2627 or check out our website, [sporty.co.nz/mapuabowls](http://sporty.co.nz/mapuabowls)

Sue England

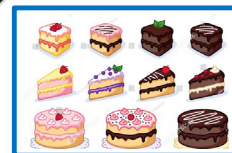
## UKRAINE FUNDRAISERS

HOSTED BY MĀPUA BOWLING CLUB

SAUSAGE SIZZLE  
SATURDAY 6<sup>TH</sup> AUGUST

FROM  
11 A.M.

MAPUA BOWLING  
CLUB ON THE  
DOMAIN

FROM  
10 A.M.

CAKE SALE  
MAPUA WHARF  
THE COOL CHANGE GALLERY  
SATURDAY 20<sup>TH</sup> AUGUST

## SARAU WINTER SALE – WE NEED YOU!!

If you would like to be part of this great community fundraiser event we would love to have you join us.... Please come....

Times: **Friday 29 July 4.30pm** for approximately one hour of setting up tables and unloading boxes of books.

**Sunday 31 July 3pm** for approximately one hour packing away books and tables.

Or: **Baking** for the café and funds for Ukraine Children's Hospital in Kiev

No experience or registration needed, just willingness to be part of the team – please turn up!

Enquiries: [jenny@saraufestival.co.nz](mailto:jenny@saraufestival.co.nz) or 021 231 3947

## Bach to rent in Golden Bay

\* "Wainui Getaway" is a recently renovated, 3-bedroom, warm bach, providing comfortable accommodation all-year round

\* Reasonable cost

\* Take your own sheets and towels and leave bach as you find it

For bookings and/or more information email Sharon on:

[s.beuke@gmail.com](mailto:s.beuke@gmail.com)

or text 027 432 8145

**SARAU  
WINTER SALE**

Preloved Books, Clothing & Cafe

July 30 & 31  
11am - 3pm

**MOUTERE HILLS COMMUNITY CENTRE**  
A fundraiser for the Sarau Community Trust



**NTC**  
Nelson & Tasman  
Construction

**ALL BUILDING WORK**

LARGE OR SMALL

NEW BUILDS • SHEDS • REPAIRS  
ALTERATIONS  
DESIGN & PLANNING SERVICE  
DIGGER & DRIVER HIRE  
EXPERIENCED LOCAL  
LBP BUILDERS

0211 408077  
[ntconstruction@xtra.co.nz](mailto:ntconstruction@xtra.co.nz)  
[www.nelsonandtasman.co.nz](http://www.nelsonandtasman.co.nz)



**ELECTRICAL  
WORX** 2017 LTD

03 528 0075

**"FOR ALL YOUR ELECTRICAL NEEDS"**  
DOMESTIC | INDUSTRIAL | COMMERCIAL

Serving our community for 35 years

.....

**Heatpumps- Supply/Install/Servicing**

.....

**Domestic**  
.....

**Commercial**  
.....

**Industrial**  
.....

**Irrigation**  
.....

**Solar - On/Off Grid**  
.....

Give us a call today for a free quote

**LOOKING FOR AN AGENT WHO ACTUALLY  
DOES REALISE ITS ALL ABOUT YOU?**

WE LOVE WHAT WE DO, AND YOU WILL TOO WHEN YOU SEE OUR  
FIXED FEES AND FABULOUS RESULTS

THINK WHAT YOU  
COULD DO WITH THAT  
EXTRA MONEY IN  
YOUR POCKET...

We would highly recommend Debbie Watson for her great  
personality and ability to listen to her clients wishes and  
concerns.

Jan and Kevin

Debbie stood out to us, above all other  
agents, from the start, with her genuine care  
for us and our home

Claire and David

Thinking of selling? Give Debbie a call, you won't regret it!  
021 462 629 | [www.yourealty.co.nz](http://www.yourealty.co.nz) | [debbie@yourealty.co.nz](mailto:debbie@yourealty.co.nz)

**YOU.REALTY™**  
Licensed Agent REAA 2008

Looking for **excellent,**  
**friendly** legal assistance for  
a **reasonable fee?**

See us for all your residential and  
commercial conveyancing, refinancing,  
debt consolidation, wills and enduring  
powers of attorney, relationship property  
matters, trusts

**THE LEGAL HOUSE**  
TLH Law Limited

Josh Boyce L.L.B. Lawyer  
Robert Styles L.L.B. Lawyer  
Yvonne Watson DipLegalExec.NZLS  
Pauline Scott DipLegalExec.NZLS

33 Trafalgar Street, Nelson  
03 548 7839  
[www.thelegalhouse.co.nz](http://www.thelegalhouse.co.nz)



# Our latest news & adventures

## What's been going on?

We have to acknowledge our awesome team who have adapted and kept programmes running even though winter bugs have caught up with so many of our whānau. Kia piki te ora ki a koutou! Wishing everyone out there a climb back to health. Recent highlights include our holiday programmes, which were run both locally and on the West Coast. Amazing to see the enthusiasm for outdoors activities in the winter from the tamariki - gumboots and jackets and off they go! Ngā mihi nui to funding from the **Rātā Foundation, MYD, Lotteries, Kaimahi for Nature, Oranga Tamariki** and **DIA** who help to support tamariki to attend these programmes.

## Upcoming Rangatahi Leadership Programmes (NCEA Assessed)

In the October Holidays and across Term 4 we are running a series of programmes for 16-18yr olds that build confidence, leadership & essential employability skills with NCEA credits at Level 2 or Level 3. **Funding may be available** to local students. Please enquire. Full details are on our website.

**Adventure Skills Development** | 8 nights | 4-12 Oct & 18-26 Oct | \$2200 | 15 L3 credits

**Kaitiaki Leadership** | 8 nights | 18-26 Oct | \$2200 | 13 L3 credits

**Adventure Leadership\*** | 3 nights | from 17-21 October | \$950 | 6-8 L2 credits

\*There are 4 blocks available. Students can enrol on one or multiple blocks which include sea kayaking, rock climbing, mountain biking and caving.

## Fun Whānau Community Planting Day

On **Sunday 14th August** we will be running a community planting day with the TDC at Moturoa (Rabbit Island) as part of the Waimeha/Waimea Inlet restoration. Whenua Iti instructors will be there to run some fun nature connection games & activities, morning tea will be provided and there are spot prizes for all who register to come along! Forest & Bird Youth members will be helping us too. We are limited to 50 people so please register online via our website or email [lucy@wio.org.nz](mailto:lucy@wio.org.nz).

## Connecting rangatahi to their turangawaewae

Matua Mike & Charlie spent a few days on Rangitoto/D'Urville Island with the support of Ngāti Koata Trust to explore the potential for the next step up in the rangatahi leadership wānanga we are facilitating for Ngāti Koata Trust. He motu ātaahua tēra! A beautiful island, the kōrero goes that Rangitoto is the last place where Ranginui and Papatuanuku still touched before being forced apart by Tānemahuta, and is understandably a significant site for Ngāti Koata. Thanks to funding from **Rātā Foundation** and **NCC** for supporting these wānanga!

The Team at Whenua Iti.



*Students have found innovative ways of coping with the weather this last term!*



*Come and join us on the 14th of August to have fun planting at Moturoa/Rabbit Island.*

*We'll see you out there!*

[www.wio.org.nz](http://www.wio.org.nz)



**Now available in  
Mahana at  
Moutere Caravans**

Elgas Swap'n'go 9kgs Gas Bottles

**Bottle Swap: \$39.00** inc GST.

**Bottle Purchase: \$96.00** inc GST.



**Moutere Caravans** Everything for your caravan

**Open: Tuesday to Saturday, 9am to 5pm**  
219 Old Coach Road, Mahana  
Phone: 03 5432 668  
[www.mouterecaravans.co.nz](http://www.mouterecaravans.co.nz)



**Motueka/Tasman**

**Auto/Marine Upholstery & Outdoor  
Shade Solutions.**

Caleb Hill- 18 years industry experience.  
0273620048  
[acanvastd@gmail.com](mailto:acanvastd@gmail.com)  
2529 Moutere Highway, Lower Moutere 7175.







**TBSL** tasman bay  
**SCAFFOLDING LTD**

**THE ONLY  
MOTUEKA BASED  
SCAFFOLDING  
COMPANY**

Give us a call 021 436 832  
or email [tasmanbayscaffolding@gmail.com](mailto:tasmanbayscaffolding@gmail.com)  
today to discuss all your scaffold requirements

scaffolding hire for all budgets

Providing gentle  
guidance when you  
need it most.



03 929 5145  
[nelson.simplicity.co.nz](http://nelson.simplicity.co.nz)



**Simplicity  
Funerals**

Simply respectful. Simply affordable.

**Anna Loach**  
Manager / Funeral Director  
Dip FD Reg. FDANZ

**NELSON & TASMAN WIDE,  
WE'RE PART OF YOUR COMMUNITY**

Phone 03 929 5145 | 276b Queen Street, Richmond  
[nelson.simplicity.co.nz](http://nelson.simplicity.co.nz)



**Tile It**

*Custom Tiling  
Waterproofing  
Wood Flooring*

**Tom**  
**021-0485649**  
**03-5432644**

**Heine's**

**Cartage and Contractors**

We have trucks, excavators, a dozer,  
a grader, and the expertise to do all your  
cartage, drainage, building site &  
foundation, roading, and subdivision work.



40 years of local knowledge  
and experience in the transport and  
contracting industry

Phone Wayne on 03 5432 788  
027 430 2725

Or call in at our workshop and office at  
1455 Moutere Highway  
(by the firestation)  
UPPER MOUTERE

# Te Mamaku Drive

## (Ruby Bay Bypass) Corridor Planting Project



A 10km long green corridor along SH60 between Tasman Village and Mapua, the so-called “Te Mamaku Drive”, formerly the Ruby Bypass; that’s the ambitious project of some local Tasman folk.

The project comes with access for the non-motorised public like walkers, runners, cyclists and horse riders. A stretch of unused, mostly public land on the eastern side of SH60 is visibly overgrown with gorse, broom, wattles and wilding pine trees. It already accommodates part of the “Dicker Ridge Walking Track” and continues on Stagecoach Road down to Chaytor Road and the Mapua’s Dominion Flats.

The “Te Mamaku Drive Corridor Project”, a sub-committee of TACA (Tasman Area Community Association), wants to connect the Waimea Estuary and Moutere Inlet with mainly native bush and trees. This would beautify the area alongside the Coastal Highway (SH60), as has recently happened with many highways in other parts of the country, reduce

the fire risk and provide a corridor for birds to move between the estuaries and nearby wetlands.

A plan has been drawn up for the whole length of the corridor, with identified priority blocks to start with and to seek appropriate funding. This is a long term project to run over years, if not several decades!

What started more than a year ago with this simple idea has now led to the first planting of 2000 trees done on 500 metres at the start of the project at the Tasman end. Thanks to the great support and funding of TET (Tasman Environmental Trust) and Restoring the Moutere through the Billion trees programme, people can now envisage the direction in which the project is heading.


To continue further south another 2-3km to the start of Stagecoach Road, the group of enthusiastic people involved in the project is facing the challenge of removal of a long row of overgrown pine trees, applying for funding to clear about 8 hectares of land, securing about 35,000 plants

and continuing with planting to be done over the next winter of 2023.

You can also make a kind donation to our Givealittle page, <https://bit.ly/3btbsmg>.

Anybody interested in being involved in this project can contact Michael at [michamarkertnz@gmail.com](mailto:michamarkertnz@gmail.com).

architecture studio | mapua



**Simone Wenk**  
Reg. Architect (Germany)  
LBP Design 2 (NZ)

*New Homes ·  
Renovations ·  
Residential ·  
Light Commercial ·  
Sustainability ·*

Contact me about your project  
Shed 4, Mapua Wharf  
[www.architecturemapua.co.nz](http://www.architecturemapua.co.nz)  
03 540 3282 / 021 1049 039  
[simonewenk@xtra.co.nz](mailto:simonewenk@xtra.co.nz)

## Moutere Volunteer Fire Brigade

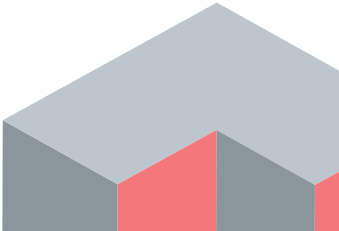

*Callouts for the month of June 2022*

18th Mapua School alarm activation  
24th Building fire, Greenwood St Motueka



**JasonFrater**  
BUILDERS LTD

**BUILDING  
OUTSIDE  
THE BOX**

021 743 497  
www.jasonfraterbuilders.co.nz  
info@jasonfraterbuilders.co.nz

**Beautiful Homes and Creative Spaces**

New Zealand  
Certified  
Builder  
Association  
NZCB

LICENSED BUILDING PRACTITIONER  
www.mab.govt.nz  
BUILDING CONFIDENCE

**Caravan RENTAL**

Local business offering great value, good quality, well equipped UK caravans available for short and long term rental. Can be delivered and set up to a campsit relocation of your choice. Short term holiday rates from \$50 a day. Long term static hire from \$100 pw.

**kina Campers**

[www.kinacampers.co.nz](http://www.kinacampers.co.nz)  
Email: [info@kinacampers.co.nz](mailto:info@kinacampers.co.nz)

**CRUX**  
ADVICE & ACCOUNTING

**Nathan Silcock**  
Director

M 021 154 1333  
P 03 539 0645  
E [nathan@cruxadvice.co.nz](mailto:nathan@cruxadvice.co.nz)  
PO Box 494  
Nelson 7040

**Mark Carey CONTRACTING LTD**

**Mark:** 021 454 000  
**Anne:** 021 454 731  
**Phone:** (03) 526 7004

**Email:** [mark.carey@xtra.co.nz](mailto:mark.carey@xtra.co.nz)  
28 Holdaway Road  
RD2 Upper Moutere Nelson 7175



[www.markcareycontracting.co.nz](http://www.markcareycontracting.co.nz)

**FUEL FOR SCHOOLS**  
School Sponsorship Programme

**EVERY FUEL PURCHASE EARNS  
REWARDS FOR OUR LOCAL SCHOOLS**

**vision**  
painting-tiling-plastering  
0204 0917 929



**We look forward to looking  
after your vehicles this year.  
Please phone and talk to  
Tim to book your vehicle in.**

**mouteremotors**

Main Road  
Upper Moutere  
**Ph 543 2707**



## Tai Chi Class and Workshop



### Tai Chi beginners class

starts Wed. 13th July at 1pm  
\$5 per session

### Weekend workshop

6th and 7th August:

Instructor David Parker from Tai Chi  
Internal Arts Tauranga.

9:00am to 3pm.

David intends to cover Tai chi and Tai chi Qigong over the weekend. Weekend open to all age groups interested in learning and practicing this form of exercise.

This is going to be an opportunity not to be missed!

Please bring a drink bottle and a plate of finger food to share for lunch  
Cost \$30 per day

All classes in Mapua Hall.

Contact Julie Booth if you require more information about the classes:  
grannyjulie11@gmail.com or 0276463066

# Community Noticeboard

**YOGA CLASSES AND COURSES** at the Riverside Community Centre. Vinyasa Flow, Restorative, Yin, Pregnancy, Mother and Baby. Contact: breatheyoganz@gmail.com / 0211709495

**UPPER MOUTERE PLAYGROUP** we meet every Friday 10am - 12pm at the Moutere Hills Community Centre, all families welcome. Contact Karen 021 252 2657

**NEED A LIFT?** Māpua Willing Wheels Volunteer Drivers, transport around Māpua, Motueka, Richmond, Nelson (no airport runs). Tel 022 6822 373 to book / mapuawheels@gmail.com, 24hrs notice required.

**MOTUEKA COASTAL BUS** operates Tuesdays, Thursdays & Saturdays, leaves Motueka i-SITE 9.30am to Tasman, Māpua, Richmond CBD & Pool, returns 1pm. Pre-booking essential Motueka i-SITE 03 528 6543.

**SARAU WINTER SALE** Saturday & Sunday 30-31 July from 11am-3pm. Moutere Hills Community Centre, Upper Moutere.

# Poisonings

*Continued from last month... During the cooler months, we often see an increase in pets being accidentally poisoned.*

Brenda Halliwell, T & C Vet

### Slug and snail bait

Unfortunately slug bait is attractive to dogs and sometimes cats. Slug bait poisoning is extremely serious and often fatal. Within minutes dogs will be anxious, panting, salivating, wobbly, may vomit, have diarrhea and start seizing. It is imperative that your pet is brought to the clinic ASAP to start treatment. There is no specific antidote but we can cause your dog to vomit up the bait and start intravenous fluids and other medications to manage the symptoms. Even with treatment pets can still die or suffer ongoing liver problems.

Always keep slug bait away from dogs and children. Try to use poison-free methods in your garden or safer products such as Quash.



*"...for all creatures great & small..."*

**Regular Moutere visits  
discounted mileage  
T&Cs apply**

**Ph 544 1200**

**info@tcvet.co.nz \* www.tcvet.co.nz**

**25 Edward Street, Wakefield  
35 McGlashen Avenue, Richmond**



**24 hour emergency vet**

**PGG Wrightson Real Estate**

## Introducing Doug Smith

I have been living and working locally since 2008. Use my experience, honesty, integrity and work ethic to deliver you the highest value for your number one asset. Competitive commission and marketing tailor made to your individual requirements.

I welcome your call for a no obligation appraisal and any advice I can give you.

**Professionalism  
Knowledge  
Competitive Pricing**



**M 027 543 2280**  
**douglasjcsmith@pggwrightson.co.nz**

[www.pggwre.co.nz](http://www.pggwre.co.nz) Licensed REAA 2008

Helping grow the country

## Hon Damien O'Connor

### MP for West Coast-Tasman

Minister of Agriculture, Biosecurity and Food Safety  
Minister for Rural Communities  
Minister of State for Trade and Export Growth



**Freephone: 0800 326 436**

**181 Tainui St, Greymouth**  
Phone 03 768 7189

**208A Palmerston St, Westport**  
Phone 03 789 5481

**234 High St, Motueka**  
Phone 03 528 8190



/damienoconnormp



@damienoconnormp



**Labour**

Authorised by Hon Damien O'Connor, Parliament Buildings, Wellington

**A great job at a GREAT Price!**

## SUN ELECTRICAL

**Phone: 03 540 2367**

[www.sunelectrical.co.nz](http://www.sunelectrical.co.nz)

**Tony: 027 3784 580**

**Troy: 022 080 4751**

124 Aranui Rd  
Mapua, Nelson 7005  
[sunelectrical@xtra.co.nz](mailto:sunelectrical@xtra.co.nz)

Domestic  
Industrial  
Commercial  
Caravan WOFs  
Solar Power Systems

**Our highly skilled and experienced electricians can provide solutions to meet your electrical needs**

- New house/shed wiring
- Rewiring
- Alterations and repairs
- Hot water elements and thermostats
- Energy saving solutions
- Power bill forensics
- Garden and outside lighting
- Solar power systems
- Caravan electrical warrants
- Sewerage and pumping systems
- Test and tag
- Switchboard upgrades and replacements
- Oven and store repairs
- Urgent breakdowns
- Industrial wiring and maintenance

**[www.sunelectrical.co.nz](http://www.sunelectrical.co.nz)**

## MOTUEKA ELECTRICAL



Motueka Electrical Limited  
027 588 5774 or 03 528 4488  
<https://www.motuekaelectrical.com>

**LUUK HERMENS**

**027 588 5774**

**03 528 4488**

[motuekaelectrical@mail.com](mailto:motuekaelectrical@mail.com)

**HEAT PUMP SUPPLIER & ACCREDITED INSTALLER**



# Steelman, strawman



Have you experienced the Christmas fall out, where the family get-together is ruined by a heated argument about politics or the hot topic of the day? Or perhaps you have noticed disagreements that make it harder to get along with people you care about?

Some of the disagreement may be due to a form of argumentation called straw-manning. This is where the views of an opposing position are misrepresented in usually one of two ways. The first way is when the actual views of someone or a group are replaced with something that is easier to dismiss. For example, Husband: "I don't think we need a cat." Wife: "You must like mouse poo in the pantry."

The second way is when little effort is made to understand the other person's point of view and is instead substituted with a caricature version of their view. For example, Wife: "I'd rather have a cat than a dog", Husband: "Why do you hate dogs?". Straw-manning is common among politicians, although

it can be seen anywhere where disagreement divides people into opposing camps.

An alternative form of argumentation is steel-manning; a relatively new term for an old practice from philosophy. In simple terms it means making the effort to represent a position that you disagree with accurately. Ideally, we would be able to express our understanding of their position in a way they agree with. It makes sense to try to understand what we disagree with; otherwise, how can we know we disagree with it? Unfortunately, we tend to put ideas and people we disagree with in a box labeled wrong or stupid, which affects how we engage with them. Really trying to understand takes patience and effort.

The next time you are having a difficult conversation try using the Steelman technique:

1. Pay careful attention to what is really being said. Really listen.

2. Ask for clarification of the bits you don't understand.
3. See if you can say it back to them in a way they agree with.
4. Point to similarities in your views and explain why you see it differently.
5. Pat yourself on the back for having a difficult conversation without ruining your relationship.

Steel-manning is not a magic bullet and is less effective with fanatics. It is a technique that helps to unlock honest dialogue while improving relationships with people you disagree with. It also has the benefit of clarifying and refining your own ideas. This technique also increases the chances of your conversation partner listening to your point of view.

Suggested reading:

Bad Arguments and How to Avoid Them, Farnam Street Media Inc <https://fs.blog/bad-arguments/>  
Feedback can be sent to: [noiseaisabove-scrutiny@gmail.com](mailto:noiseaisabove-scrutiny@gmail.com) Zafir Ivanov



Call us for a quote or estimate on your next building project

0274 460 739



TOWN & COUNTRY VET  
RICHMOND



*Dog Wash K9000*

Coin and note operated

Open 24 hours

7 days

{ the basin }

BOUTIQUE.HAIRDRESSING  
APPLEBY.NELSON



- \* Beautiful Location
- \* Relaxed Atmosphere
- \* One on One Personal Service
- \* Experienced Hair Design
- \* Fabulous Cuts and Colours



Louise Dunlop

MAPUA 10 MIN > RICHMOND 10 MIN

p: 022 354 8771 [www.thebasin.co.nz](http://www.thebasin.co.nz)  
@: [louise@thebasin.co.nz](mailto:louise@thebasin.co.nz) 12 Research Orchard Rd



**Trade and Professional Services List**  
*Please support our advertisers*

What	Who	Contact
Accommodation	Tasman View Accommodation	<a href="http://www.tasmanview.co.nz">www.tasmanview.co.nz</a>
Accommodation	Wainui Getaway Golden Bay - Sharon	027 432 8145
Accounting Bookkeeping	Crux Advice & Accounting Ltd	03 539 0645 Mob: 021 154 1333
Acupuncture	Dorothea Tebbenhoff	027 214 6444
Architectural Designer	Simone Wenk	021 1049 039 AH: 03 540 3282
Barley	Whole barley 25kg bags	021 454 731
Builder	Andrew Eggers	027 446 0739 AH: 03 543 2757
Builder	Jason Frater	021 743 497 AH: 03 528 0337
Builder	NTC	021 140 8077
Caravans	Kina Campers	<a href="http://www.kinacampers.co.nz">www.kinacampers.co.nz</a>
Chiropractors	Tasman Bay Chiropractic	03 544 4554
Child Care/Early Childhood Education	Country Kids Manager - Nickie	<a href="http://www.countrykids.org.nz">www.countrykids.org.nz</a>
Clothing	Jacqui's Pre-loved and More -Jacqui	027 346 4071
Composting Toilets	Biolo - Rick Stokes	021 1029 098 / 03 526 7882
Concrete	Concrete & Metals Tasman Bay	03 528 6344
Contractors	Tasman Earthworks & Construction	021 119 2239
Contractors & Cartage	Wayne, Heine	027 430 2725 AH: 03 543 2788
Electrician	Electrical Worx	0800 967 948
Electrician	Motueka Electrical - Luuk Hermens	027 588 5774 AH: 03 528 4488
Electrician	Sun Electrical - Tony	03 540 2367 Mob: 027 3784 580
Food for Community (Food Bank)	Kai Collective	021 2626 675
Funeral Directors	Simplicity Funerals - Anne Loach	03 929 5145
Hairdresser	The Basin - Louise Dunlop	022 354 8771
Hay and baleage production	Mark Carey Contracting	021 454 000 AH: 03 526 7004
Health & Wellbeing	Greenworld Health & Lifestyle	03 528 7262
Honey	Western Ranges - <a href="http://www.westernrangeshoney.co.nz">www.westernrangeshoney.co.nz</a>	<a href="mailto:sales@westernrangeshoney.co.nz">sales@westernrangeshoney.co.nz</a>
Horse cover/gear repairs	Lawrie	03 543 2234 Mob: 021 208 2192
Kitchens	Moutere Village Kitchens - Steve Farmer	021 0839 1206
Landscaping	Mow-tivated Lawn & Garden	027 599 3304
Landscaping	Hardy Landscapes - Michael Hardy	021 443 908 AH: 03 543 2555
Landscaping	Stonescape	03 528 6344
Lawyer Legal Services	Pitt & Moore	03 543 9090
Lawyer Legal Services	The Legal House - Yvonne Watson	03 548 7839
Massage - Bowen Therapy	Better Bodies - Suzanne Clark	021 1414 937
Massage	Intergrative Wellbeing Kahurangi - Gary Smith	021 0277 8363
Mechanic	Moutere Motors	03 543 2707
MP	Damien O'Connor, Labour Party	0800 DAMIEN
Caravans	Moutere Caravans	03 543 2668
Nursery	The Nursery @ 35 Horton Road Tasman	021 122 3056
Painter	Vision Painting Tiling & Plastering - Glen	020 4091 7929
Play Group	Karen Barnett	021 252 2657
Plumber	My Personal Plumber - Alex Bint	027 542 4329 AH: 0800 444 343
Pub/Restaurant	The Moutere Inn	03 543 2759
Real Estate	Bayleys - Matt Galvin	027 768 6288
Real Estate	PGG Wrightson - Doug Smith	027 543 2280
Real Estate	You.Realty - Debbie	021 462 629
Recreation Centre	Moutere Hills Community Centre	03 543 2516
Scaffolding	Tasman Bay Scaffolding Ltd	021 436 832
Social Club	Beryl or Shirley	03 543 2122 / 03 543 2438
Tiling	Tile it - Tom	021 048 5649 AH: 03 5432644
Upholstery	Adventure Canvas, Auto / Marine - Caleb Hill	027 3620 048
Vet	Town & Country Vet	03 544 1200
Water	Water Filtration & Pumps - Frans	0275 281 366
Youth Group	Tessa Werner	022 101 2276
Yoga	Yoga, Mapua - with Martin	027 614 5936