

The Grapevine

MOUTERE HILLS COMMUNITY NEWS

MAY 2022

Inside this issue:

- 2 Grapevine Information
Moutere Fire Brigade callouts
- 3 Country Kids
- 4 Nelson Federated Farmers
- 5 Community Noticeboard
Sarau Book Fair
- 7 Opinion piece
- 9 Walking the land
- 10 Moutere Hills Community Cntr.
- 13 Believe it or not - animal facts
- 15 Whenua Iti
- 17 Mapua Bowls
Local news and poetry
- 19 MDBA Update
- 21 Soil Issues
- 22 Trades & Professional LIST

Special points of interest:

We have started a **Community Noticeboard** page, see page 5, all club or group notices (25 words) FREE for a limited time.

Thank you for reading the Grapevine and for supporting the advertisers.

FREE DELIVERY
Donations appreciated.



A Passion for fashion

It's not what you would expect to find nestled amongst a lovely garden looking out on the peaceful pastures of the Moutere farmland. This is an area known for its creative people, producers of artisan food and wine, craft beer, and a wealth of other handcrafted products – now it is also a place where you can buy designer clothing without long distance travel and without breaking the bank!

Jacqui Kennedy opened her 'Pre loved and More' clothing store in her home just off the Moutere Highway in September of last year – here there is an eclectic mix of clothing and accessories, just begging you to browse.

Jacqui's journey began in the UK, her family was not well-to-do and

she learned early to appreciate hand me down clothing. Always passionate about fashion and fabric, when her initial career choice of window dressing didn't eventuate she channeled her creative energy into hairdressing and beauty. She and her husband travelled widely and spent many years living and working in interesting parts of the world, including a 10 year stint in the Virgin Islands in the Caribbean. Here Jacqui worked in an upmarket hotel spa, and had an opportunity to work in, and then manage boutique resort clothing stores. During trips 'home' to the UK she loved second hand shopping for out of season clothing treasures.

She and Richard have been married for forty years, and can share many
cont. pg3

PLACING AN ADVERTISEMENT

Thank you for advertising in the Grapevine—you help us cover the cost of producing and delivering this free community newsletter each month.

The deadline for each issue is the **15th of the month**. Please email your print-ready advert (JPG, PDF, or PNG preferable) to: umograpevine@protonmail.com

The following prices apply for advertising:

∞ Births, marriages, deaths, group or giveaway notices on the community noticeboard (25 words):
FREE

∞ 1/16 pg	portrait	44 x 55mm:	\$7
∞ 1/8 pg	landscape / portrait	90 x 55: *44 x 127:	\$14
∞ 1/4 pg	portrait / landscape / landscape	90 x 127: 185 x 55: *136 x 67:	\$28
∞ 3/8 pg		*136 x 127:	\$42
∞ 1/2 pg**	landscape	*185 x 127:	\$56

{*if available. **limited to a 3 month listing}

To make payment please email:

umograpevineinvoices@gmail.com

Sending us articles of interest

We warmly welcome contributions to The Grapevine from all residents in the Moutere and Tasman regions. You make the newsletter an interesting read! There is no cost for having your articles published if you are telling the community about a fundraising venture. However we do appreciate a donation from commercial ventures to help us cover our printing costs—see email address above to get bank details.

Archived coloured copies of the Grapevine are available at www.mouterehills.org.nz/community/the-grapevine courtesy of the Moutere Hills Community Centre Staff. Grapevine circulation is 1400 copies. This issue has been constructed by volunteers: Rachel Field, Edith Bulle, Beverly Sellers, Jenny Leith, Sharon Beuke, Bessie Adie, and Kirsty Vanderwerff.

Disclaimer

Views expressed in articles in The Grapevine are not necessarily those of The Grapevine team or its editor. While every effort has been made to ensure the accuracy of the information included in this publication, The Grapevine takes no responsibility for errors or omissions or for any consequences of reliance on this information. All adverts are required to present a name or contact details so that people can respond directly should they have any queries or concerns. Publication of advertising material implies no endorsement of either a product or a service.



Grapevine Says...

'Thank you community' for the array of contributions sent in for this months newsletter, we appreciate your input!

Also, don't forget we now have a **Community Noticeboard** page. If you have any club or group notices 25 words or less, or a small run-on request, please email them to us to include for FREE for a limited time; see pg 5.

Moutere Volunteer Fire Brigade

Callouts for the month of March 2022

7/3 MVA, Neudorf Road
8/3 Vegetation fire, Dovedale Road Thorpe
12/3 Bonfire, Orinoco/Thorpe Road
21/3 MVA, Redwood Valley

With daylight saving ending, its always a good time and reminder to check smoke alarms, if you are unable to check them yourself we can come and help. Contact Fred Ewers 0210316615 or Allan Rankin 0212160849.

It is also a good time to make sure your chimney has been cleaned of bird nests and build up of soot from last winter, which both can cause chimney fires.



Hullo Upper Moutere Folks!

Home in the country urgently wanted.
Upper Moutere or Tasman.
Prefer to buy. But other options considered.

e.g.

Land to put Tiny House - lease or buy.

Renovate livable cottage.

Granny flat.

Etc.

References available.

Phone Sophie 0276440905

anecdotes, resulting from mistaken identity when on flights or booking into hotels, especially in the US, when staff would think they were hosting the other very famous 'Jacqueline Kennedy'.

The Kennedys moved to New Zealand and purchased their property in Upper Moutere twelve years ago, and for some years Jacqui had her own beauty salon in Richmond. Sadly, a personal tragedy resulted in the decision to close the business to focus on family. Later she joined the team at Stacey's, a boutique clothing store in Richmond, which she went on to manage. For some time she and a

group of friends also ran stalls in the region, selling excess of their good quality clothing items at markets – they called themselves 'The Jailbirds'. In addition to her love for helping others, one of the big triggers for Jacqui to open her own sustainable clothing store was an article highlighting the amount of mass produced 'cheap' clothing that ends up in our landfills every year, along with reading Joe Bennetts's book 'Where do my Underpants come from?' – a read she thoroughly recommends.

Her store is run on a 'sell on behalf' basis, so the seller and she share the proceeds. Jacqui is happy to advise

customers, and help to put an outfit together, she is equally happy to leave a customer to browse and choose for themselves.

As well as running the clothing store, she sells Thermomix, and has taken embroidery, florist and fabric painting classes – ever creative. She would love to see more people come to visit her store – there is no need to be intimidated by 'designer' labels, she also has lots of non-label good quality clothing, jewellery, shoes, handbags and scarves. And as she says the store gives the clothes 'another chance to shine'.

Huge shout out to Harcourts Foundation



Early Childhood Education & Care

Country Kids would like to send a huge shout out to Harcourts for their generosity. Thanks to receiving a grant from them we now have a new shade sail in our playground.

This has provided so many new

learning opportunities for the tamariki, including having a digger and a concrete truck at our centre. There was so much interest and so many questions. These were all answered by the wonderful team at Tasman Canvas as they worked to get our sail up.

Children can now use this area on our beautiful sunny days for a variety of activities including games, reading, art activities and many fun chal-

lenges using the mound.

Country Kids is a community centre, we are not for profit, to receive this grant makes all the difference to the children's learning and health and Safety.

Thank you again Harcourts.







Call us for a quote or estimate on your next building project

0274 460 739

 Visit us on Facebook



Jacqui Kennedy

027 346 4071
1855 Moutere Highway
Upper Moutere
{Opposite Harakeke Preschool}
Opening Hours
Thursday 2-8pm
Friday 2-5pm
Saturday 11-3pm
Or By Appointment

Pre-loved good quality womans clothing.
Top Labels including... Augustine, Trelise Cooper,
Ketzke, Jane Daniels, WORLD to name a few....
"beautiful atmosphere"

For personal service and to support local, sustainable shopping, come visit Jacqui's 'Pre-loved and More' in it's quiet country cottage setting, surrounded by nature.

You are invited...



Nelson Federated Farmers

AGM 2022

Come and join us for our 2022 AGM, we have nibbles, drinks and guest speakers, as well as time to chat and mingle.

May 12th: 3pm **Moutere Hills Community Centre**

Your input makes for a better province.

Guest Speakers:
Karen Williams - Vice President, Federated Farmers of New Zealand
Lyndon Bray - CEO Tasman Rugby

Any notice of motion or general business items for the Annual General Meeting, need to be with the Secretary (email to: nelsonfedfarm@gmail.com) by 5.00pm on Thursday 5 May.

THINK REAL ESTATE FEES ARE TOO HIGH? SO DO WE!

Now, you might want to pull up a chair for this next bit; but did you know that if your home is valued between \$500k and \$1 million your fee with us would be just \$12k +GST? Yes, really. Same high level of service. Same advertising reach...

You see, we offer a fresh, different approach to selling real estate. We are passionate about what we do and are committed to providing a service that is truly all about YOU, the customer.

Now, we've been in this business long enough to know that what our customers want is to sell their property quickly, without stress and for the best possible price. So that is why everything about YOU.Realty is designed to do just that. If you're thinking of selling, give us a call - you won't regret it!



"Debbie is a rare gem, reliable, caring, knowledgeable and professional from start to finish. She stood out to us, above all other agents, from the start, with her genuine care for us and our home. We immediately relaxed and trusted that our home (and cats!) were in the very best of hands."

David and Claire - Mapua, Tasman

Thinking of selling? Give Debbie Watson a call today!

021 462 629 | www.yourealty.co.nz | debbie@yourealty.co.nz



YOU.REALTY™

Licensed Agent #4422008

Community Noticeboard

YOGA CLASSES AND COURSES at the Riverside Community Centre. Vinyasa Flow, Restorative, Yin, Pregnancy, Mother and Baby. Contact: breatheyoganz@gmail.com / 0211709495

UPPER MOUTERE PLAYGROUP we meet every Friday 10am - 12pm at the Moutere Hills Community Centre, all families welcome. Contact Karen 021 252 2657

UPPER MOUTERE BABY PLAYGROUP is on hold - watch this space - baby group will be back.

NEED A LIFT? Māpua Willing Wheels Volunteer Drivers, transport around Māpua, Motueka, Richmond, Nelson (no airport runs). Tel 022 6822 373 to book / mapuawheels@gmail.com, 24hrs notice required.

MOTUEKA COASTAL BUS operates Tuesdays, Thursdays & Saturdays, leaves Motueka i-SITE 9.30am to Tasman, Māpua, Richmond CBD & Pool, returns 1pm. Pre-booking essential Motueka i-SITE 03 528 6543.

SECOND CHANCE TASMAN is rehoming 12 puppies in 2wks time. Lockley mix breed. \$350 p/pup; includes flea, worming, 3x vaccinations, microchipped and desexed when of age. Follow on FB for photos/queries, or contact Sinéad 021 2777 422



architecture studio | mapua



Simone Wenk
Reg. Architect (Germany)
LBP Design 2 (NZ)

*New Homes •
Renovations •
Residential •
Light Commercial •
Sustainability •*

Contact me about your project
Shed 4, Mapua Wharf
www.architecturemapua.co.nz
03 540 3282 / 021 1049 039
simonewenk@xtra.co.nz

water
FILTRATION
& PUMPS

Frans van de Loo
0275 281 366

frans.wfp@gmail.com
waterfiltrationpumps@gmail.com

now open

DINE IN OR TAKEAWAY

Hand crafted pizza, salads and platters
Daily dessert specials

Check out North Eatery on FB or Insta
Email: info.northeatery@gmail.com
Phone: 03 543 2983 or come visit us!



LOCATED AT HEAPHY VINEYARD, FORMERLY KAHURANGI

Open
Wed-Sun
11am-4pm



We can help your business grow



PITT & MOORE
LAWYERS AND NOTARIES PUBLIC

Nelson 03 548 8349
Richmond 03 543 9090
www.pittandmoore.co.nz
Lowdell



CARAVAN RENTAL

Local business offering great value, good quality, well equipped UK caravans available for short and long term rental. Can be delivered and set up to a campsite location of your choice. Short term holiday rates from \$50 a day. Long term static hire from \$100 pw.

www.kinacampers.co.nz

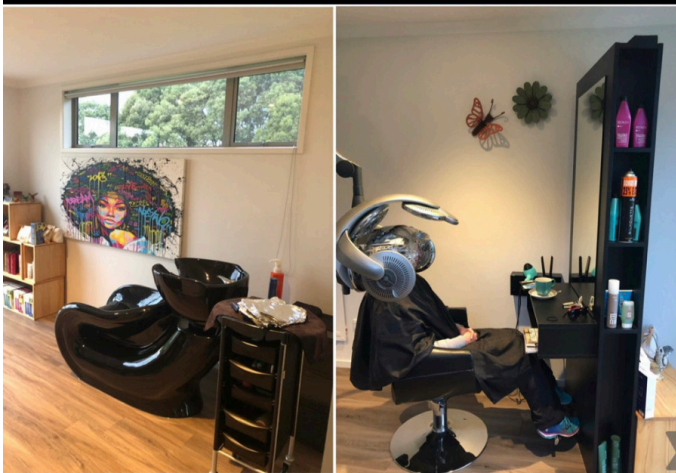
Email: info@kinacampers.co.nz



vision
painting-tiling-plastering
0204 0917 929



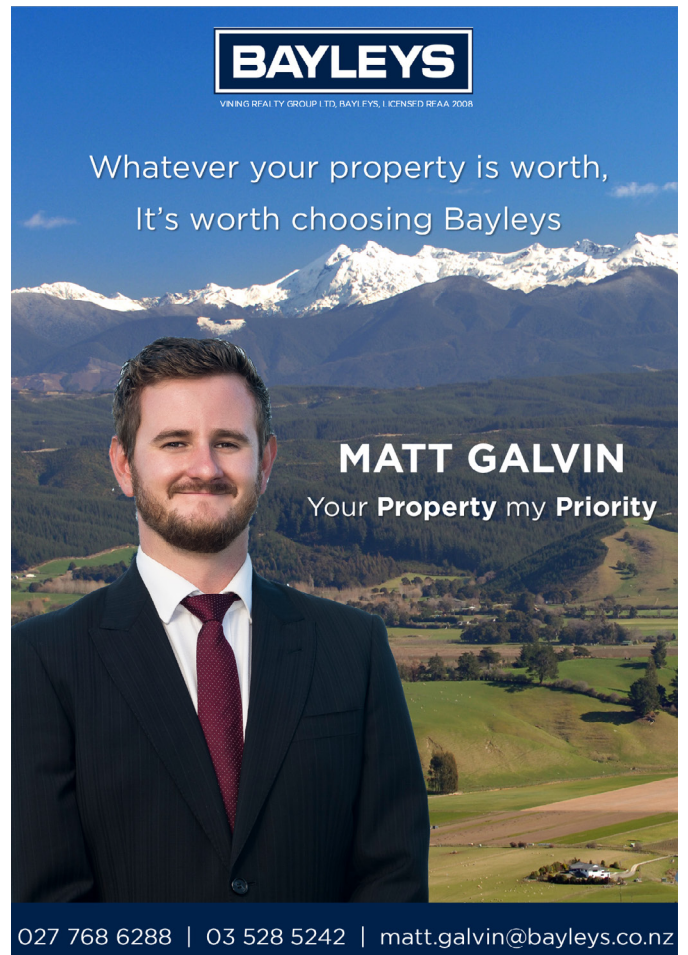
0223548771
the basin
BOUTIQUE HAIRDRESSING
APPLEBY, NELSON

BAYLEYS
WINING REALTY GROUP LTD, BAY FYS, LICENSED REAA 2008

Whatever your property is worth,
It's worth choosing Bayleys

MATT GALVIN
Your **Property** my **Priority**



027 768 6288 | 03 528 5242 | matt.galvin@bayleys.co.nz

Why, where, when and how do we want to and need to grow?

Opinion piece by Jan Heijs

What types of housing do we need in the future? Housing provisions should match the needs of the community; not what developers are keen to sell, which seems to be the main driving force at present. While an increasing number of people are looking for smaller houses, new developments in recent years have almost entirely consisted of large houses on (relatively) large lots. Under the current rules, there is no requirement to cater for all needs. To make matters worse developers have often imposed covenants requiring a minimum of three bedrooms. We need a greater variety of housing to cater for all!

How is Tasman District Council (TDC) delivering on this? Some important planning processes are out for consultation at the moment: (1) the Future Development Strategy (FDS) and (2) a number of new plan changes. Both will have a significant impact on how we are going to live in the future and what our region will look like. Having these processes at the same time is very confusing to many of us, and the timeframe for feedback is very short (closing on 14 April). The amount of information to absorb and to comprehend what that means to you and your community is huge.

My attempt to clarify these two processes is as follows: the FDS is a strategy to identify future growth areas that may be developed in the medium to long term future. The development of the FDS is done under the Local Government Act. It requires TDC to follow a consultation process, but the council has full control on how they wish to respond to feedback and there are no opportunities to submit or appeal. Any new area identified through the FDS cannot be developed (yet) and has to go through a plan change process before it can be implemented. TDC emphasizes that whether or not these new areas will in fact be developed is not certain and uses the words 'may' and 'can' very often. Although that might be legally

correct, don't be fooled! Before you know it, a 'maybe' will change to a 'fact'. Once approved through the FDS the horse has bolted so to speak. So, it is very important that you provide your feedback now.

The plan change is a process by which an area is 're-zoned', thus changing what you can and can't do. When approved, it allows landowners and developers to start developing these areas and build houses. Plan change processes fall under the Resource Management Act (RMA) and provide opportunities to submit and appeal and need to be supported by investigations as part of this process.

The calculation of how much future development growth we need is in part based on predictions that assume that the trends experienced over the last 5-10 years will continue. This is questionable because there is an underlying assumption of a continuation of people moving from Auckland and Wellington caused (largely) by the unaffordability of living there and the failure of central governments over the last few decades to address the housing crisis. However, the Nelson/Tasman area has become unaffordable as well. The prediction of current trends continuing applies to the whole of the region. For example, there is a housing shortage in Motueka, specifically for smaller, more affordable housing options but because Motueka experienced a relatively slow growth rate, it is assumed that this will continue. The opposite is true for Māpua where there is a very high growth rate. Assumed future densities are very low – so there will still be traditional subdivisions with large property sizes and large dwellings with three or more bedrooms. Apart from providing a lack of housing variety, creating new development areas far away from employment, schools and services will lead to more cars on the road, long travel distances, more carbon emissions, traffic jams and expensive roading upgrades.

The Tasman Village proposal doesn't

have a village shape at all but consists of three random development areas and the current Tasman township is not part of this. It is clear that TDC has used a 'willing landowner approach' rather than a strategic vision on how and where growth should be provided. (TDC has stated that the Tasman Village proposal is not strictly needed to meet demand.) The Tasman Village and Moutere Hill proposals should be outright rejected. The need for other greenfield development areas is also highly debatable. The only exemption would be the proposed Motueka South development but only if it will cater for the needs of the local community.

In conclusion, the FDS does not provide housing for people who want to down-scale or those who don't want and/or don't need large houses. Some of us will be forced out of our community because of a lack of housing options. The FDS is not a real strategy that ensures new housing is close to our main areas for employment, services and schools and provides for the needs of our community. It needs a major overhaul.

Please also have a look at the proposed plan changes for your area. In most of these there is no 'requirement', just some allowance for intensification and leaving it up to the market to deliver. As if that has provided us what we need in the past. NelsonTasman2050

Jan Heijs is a member of a multi-disciplinary collective of concerned professionals who care about how the future of our built environment has been set up. We will endeavour to provide further background on the FDS and plan changes. This will include more detailed assessments and suggested points for feedback that you are able to use in your feedback. See www.facebook.com/nelsontasman2050 and feel free to email: nelsontasman2050@gmail.com

In case some of you missed Timo Neubauer's article 'Reimagining our future needs a radical rethink', in the Nelson Mail of 19 March, have a look for it on Stuff.



green world health
& Lifestyle

Sole Supplier of
Dr. Hauschka
Products
in Motueka.



Open 7 Days



177 High Street, Motueka

Ph: 03 528 7262

E: greenworldhealthandlifestyle@gmail.com



**Tasman Bay
Chiropractic**
Keeping you in the game since 2002

Monday-Saturday
03 544 4554
64 Oxford St Richmond

Three chiropractors available

Referrals, families and
all new patients welcome

Visit our website or call for
more information

tasmanbaychiropractic.co.nz



Find us on 

Whole Barley
25 kg bags
\$20 per bag



Phone 021 454 731 or 03 526 7004



TASMAN VIEW
Accommodation

903 Tasman View Road
Lower Moutere
021 119 2239

www.tasmanview.co.nz



MOUTERE MASSAGE

FIONA RAMSAY

QUALIFIED AND PROFESSIONAL

***SPORTS *DEEP TISSUE *INJURY REPAIR**

***FOOT REFLEXOLOGY *BOWEN THERAPY**

20 WILSON ROAD

UPPER MOUTERE

PH/TXT **027 452 3906**

MON, TUES, WED & FRI



**Dorothea
Tebbenhoff**
Acupuncture



Licensed Acupuncturist
MAcNZ, Acc Provider

Re-located to Motopolis building

31 Wallace St, Motueka

027 214 6444

www.tasmanacupuncture.co.nz

Walking the land: what does it need from us?

Starting out last year with a piece of orchard, stripped of over 700 pear trees due to fire blight, except for 15 trees to be kept for harvest for school, the Landcare group of the Steiner Farm School is now faced with the question of what the earth needs to help her heal. Now in autumn it is obvious how different the growth on the land is. The former rows of trees are clearly visible with sparse growth of dried-up grass, surrounded by rows rich with wild herbs, mainly yarrow, where the earth seems to be healing itself already. We are now beginning to study which wild plants are coming up and what qualities they might bring to the soil. Which birds are regularly coming around to feed and rest? Many root stock shoots of the former trees are beginning to grow again, mainly quince but also some pear trees. What different microclimates can be found with different plant growth. We want to do soil and water testing to use in

the classroom when needed. Right away the place is turning into an educational hub all by itself.

We will take up the questions arising from the land and share them in the continuing bio dynamic workshops. The next one will be on Saturday, April 23, and we will be making bio-dynamic preparations ourselves, including Prep 500 and five other compost preparations, which will all be stored in the earth over winter to take in cosmic and earthly forces, beneficial for the vitality and fertility of the soil next year.

You might want to participate in the Big Stir of Prep 500 from last year, which has been lifted out of the cow horns they rested in during last winter and changed the cow manure into beautiful soil. A small quantity will be diluted in warm water and stirred for an hour. Then the homeopathic brew



will be spread on the land by hand, on Sunday, April 14th, starting at 3 pm by the haybarn on 149 School Road, Lower Moutere. You are most welcome to join us!

This treatment of b-d preparations and the grazing of a few cows, as well as being left to its own devices will hopefully enhance the natural well-being of the soil for now, while the land carers on the School Farm are regularly observing and learning what could be the next small steps to take towards the growth of bio-dynamic food on the land.

Edith Bulle

Got too many Books?

Donate your preloved books to the

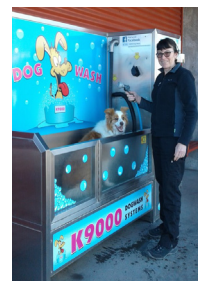
MOUTERE HILLS

*Sarau
Winter Sale*

SATURDAY 30TH
&
SUNDAY 31ST JULY
11AM - 3PM

Please call Sharon to arrange drop-off: 027 432 8145
Or, wait until **29th July** and bring them straight to MHCC
Thanks!

TOWN & COUNTRY VET RICHMOND



Dog Wash K9000

Coin and note operated

Open 24 hours

7 days

MOUTERE HILLS COMMUNITY CENTRE



A massive thank you to everyone who contributed towards the purchase and installation of the outdoor basketball hoop. We received donations from local families, a small grant from Tasman District Council Grants from Grants and a significant contribution from ONEFORTYONE.



We would also like to acknowledge Jislaine and Rafael for all they do to support Youth Basketball in our Community. It is much appreciated.

Thank you from Katrina, Adele, Keith and Cindus

FROM THE MHCC BOARD

"The Moutere Hills Community Centre board met recently to discuss and determine the strategic direction of the centre for the next few years. We appreciate everyone who completed our recent members survey. The information provided from this has assisted us in our decision making process. A copy of the strategic plan will be available once finalised."

Tim Greenhough, MHCC Chair



HARVEST MARKET

Sunday 15th May

10am – 2pm



Come along and check out some of the great stalls with items produced from the land or for the land. Sit back and relax with a delicious meal from one of the food trucks and a drink from the bar. Enjoy the magic of the Moutere and all it has to offer!

Would you like to have a stall out our market? Sites only \$25 each. On wet or fine!

To book visit: www.mouterehills.org.nz

Movement & Music

Come along and join Debbie for a fun and interactive session with your toddler/pre-schooler.

Mondays at 9:30am



Cost: \$2 per child per session

Starts Monday 9th May



Friday's

10am - 1pm

Starts 20th May

Adult beginners and improvers. Meet like-minded people in a relaxed atmosphere!

14 week art course for 3 hours per week

Cost \$49 per week (+ \$84 booking fee)

All material and refreshments are provided.

For more information please visit

www.seasonartclass-Tasman-Nelson.com

Or phone 0212782180



Phone: 543 2516

Email: enquiries@mouterehills.org.nz

Website: www.mouterehills.org.nz



MOUTERE HILLS COMMUNITY CENTRE



New Term 2 Schedule out now. Great to see our range of regular activities expanding!
Check it out on our website www.mouterehills.org.nz or pop into the centre to grab a paper copy from outside the office.

PICKLE BALL

Come along and join in the fun of this new social sport

Pickleball is a simple paddle game played with a baseball sized wiffleball over a tennis type net on a badminton size court! Suitable for all ages and abilities!

Wednesday's 11:00am—12:00pm

\$3 per person, all equipment provided!



RE-ACTIVATE

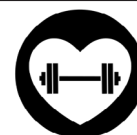
Offering a second session per week of this popular fitness class

Wednesday's from 10:00am—10:45am

Free for fitness centre members, \$5 for concession card holders (10 class concessions available for \$50) or \$7 casual.

Classes change each week and include a range of cardio and resistance exercises. Suitable for all ages and abilities!

Bookings essential. Book online at www.mouterehills.org.nz/fitness-centre-calendar/



PRODIGY DANCE

Join Amy-Rose and explore a wide variety of dance genres in a fun, friendly and supportive class, catering for all ability levels.



Wednesdays and Thursdays
Starting the week of 2 May 2022



Classes for preschoolers and above.

Class numbers limited and bookings are essential!

Contact Amy-Rose on 0212207299 or email prodigydanceconz@gmail.com

As the days grow colder and shorter, now is a great time to sign up for the Fitness Centre. Fitness Centre memberships include daily access between 4:00am-11:30pm, shower use and free fitness classes. Membership is just \$11.95/ week for a student/ 60+ or \$12.95/ week for an adult, and a one-off sign-up fee of \$30. Join now under the Fitness Centre tab on our website!



Phone: 543 2516

Email: enquiries@mouterehills.org.nz





Tasman Earthworks & Construction operate throughout the greater Nelson and Tasman region, offering a wide range of excavation and construction services.

EARTHWORKS

- All site work and general excavation
- Foundations and footings
- Augering work and hole boring
- Landscape shaping
- Trenching
- Driveways and pathways

CONSTRUCTION

- Qualified Licensed Building Practitioner (LBP)
- All general carpentry work
- Renovations and alterations
- Retaining walls and fences
- Decks and patios
- Property maintenance

We offer a personal and tailored service to meet your needs

Contact us today for an estimate for your next project.



027 385 5998



www.facebook.com/tasmanearthworks



www.instagram.com/tasmanearthworks



info@tasmanearthworks.co.nz

tasmanearthworks.co.nz



Water Features

Paving

Rock Work

Irrigation

General Landscaping

Michael Hardy

Ph: 021 443 908

A/H: 03 543 2555

Riverside Milk

\$3 a litre

289 Main Road

Lower Moutere

riversidemilk.co.nz



'Raw milk may contain microorganisms that can cause serious illness. To reduce the risk of illness, raw milk should be heated to at least 70 degree Celsius for one minute. This is critical for infants, young children, the elderly, pregnant women and people with weakened immune systems.' (Ministry of Primary Industries)

Believe it or not!

This month a few random facts from around the animal world, and maybe a few extras!

Brenda Halliwell, Town and Country Vet

- Cows and horses can sleep standing up.
- Hummingbirds can fly backwards.
- At birth a kangaroo is the size of a large baked bean.
- Baked beans are not actually baked.
- Boanthropy is a rare psychological disorder when people believe they are a cow.
- Sperm whales have different dialects around the world
- Spider webs were used as bandages in ancient Greece and Rome.
- The Mayans worshipped turkeys as vessels of the gods
- In France, pig owners are not allowed to name their pig Napoleon.
- Blue whales weigh between 130-150 tonnes = the weight of 15-18 elephants or 45-50 Ford Rangers.
- An orca weighs one Ford Ranger
- A flamingo's head has to be upside down for it to feed
- When a dolphin sleeps, only half its brain rests and it keeps one eye open.
- The average person will spend six months of their life waiting for red lights to turn green.
- Rhinoceros horn is made of hair.
- An ostrich eye is about 5cm diameter (the same size as a snooker ball) and is bigger than its brain
- Rodents and rabbits can't vomit and neither can horses
- Giraffes have the same number of neck vertebrae as humans, they're just bigger!!
- If you are driving around Scandinavia and you see a reindeer in your headlights, in summer their eyes will look golden and in winter they will look blue.
- Tyromancy is the use of cheese to predict the future.
- Polar bear skin is black.
- Butterflies use sensors on their legs and feet to taste food.
- It is illegal to be drunk and in charge of a cow in Scotland.
- A cheetah can run at speeds up to 120kph, a Black Marlin can swim at speeds of 130kph and a Peregrine Falcon can dive at speeds of up to 390kph!
- Hippos can run faster than humans.
- "Jaws" is the most common name for pet goldfish.
- Dogs have 50 times more smell sensors than humans



"...for all creatures great & small..."

**Regular Moutere visits
discounted mileage
T&Cs apply**

Ph 544 1200

info@tcvet.co.nz * www.tcvet.co.nz

**25 Edward Street, Wakefield
35 McGlashen Avenue, Richmond**



24 hour emergency vet

but they only have 1/6th of the number of tastebuds that we do.

- In Georgia, USA it is illegal for chickens to cross the road, for donkeys to sleep in bathtubs and for people to have ice cream cones in their back pocket on Sundays.
- Sloths are the pull-up champions – they can lift all their body weight with one arm.
- The oldest land animal in the world is Jonathan the tortoise who is 190 years old.
- A group of owls is called a parliament.
- A group of ferrets is called a business.
- A group of porcupines is called a prickple.
- A group of parrots is called a pandemonium.
- And a group of rhinos is called a crash!



TASMAN EQUINE THERAPIES

Fiona Ramsay

Advanced Equine Body Worker

Physiotherapeutic Remedies for Horses

Sports Performance Therapy, Injury Repair/Rehab, Equine Bowen

Qualified Professional Services

027 452 3906




NTC
Nelson & Tasman
Construction

ALL BUILDING WORK

LARGE OR SMALL

NEW BUILDS • SHEDS • REPAIRS
ALTERATIONS
DESIGN & PLANNING SERVICE
DIGGER & DRIVER HIRE
EXPERIENCED LOCAL
LBP BUILDERS

0211 408077
ntconstruction@xtra.co.nz
www.nelsonandtasman.co.nz



**ELECTRICAL
WORX** 2017 LTD

03 528 0075

"FOR ALL YOUR ELECTRICAL NEEDS"
DOMESTIC | INDUSTRIAL | COMMERCIAL

Serving our community for 35 years

.....

Heatpumps- Supply/Install/Servicing

.....

Domestic
.....


Commercial
.....

Industrial
.....

Irrigation
.....

Solar - On/Off Grid
.....

Give us a call today for a free quote



**COUNTRY
CUTS**

HAIRDRESSING

CALL TO ARRANGE AN APPOINTMENT
(03) 5432297 • 027 472 8863

Looking for **excellent,
friendly** legal assistance for
a **reasonable fee**?

See us for all your residential and
commercial conveyancing, refinancing,
debt consolidation, wills and enduring
powers of attorney, relationship property
matters, trusts

THE LEGAL HOUSE
TLH Law Limited

Josh Boyce L.L.B. Lawyer
Robert Styles L.L.B. Lawyer
Yvonne Watson DipLegalExec.NZLS
Pauline Scott DipLegalExec.NZLS

33 Trafalgar Street, Nelson
03 548 7839
www.thelegalhouse.co.nz

Our latest news & adventures

Rā Ora Programmes a hit with local Primary Schools

We've thoroughly enjoyed the chance to connect with local kura and their tamariki in past weeks, including our local Mahana and Upper Moutere schools, during the Rā Ora programme - a fun mix of cultural, environmental and adventurous learning to provide a wellbeing 'boost' - for the teachers too! Ngā mihi ki te **Department of Internal Affairs** for funding this programme through the Lotteries Communities Fund. If you're keen to book this in for your school head to www.wio.org.nz.

Congratulations to Ignite Programme Graduates!

For their final journey as part of the Ignite Programme, Year 11 students from Motueka High School spent a week based at Te Tai Poutini (the West Coast). Their week included abesiling, rock climbing, caving and white water rafting which, according to one student, was "the most amazing experience I've had". Thanks to a generous local funder, we run the Ignite Programme with Motueka High School to support the development of selected students across 3 years of adventure-based learning. What an opportunity!! www.wio.org.nz

Whenua Iti Trust Annual AGM

You are welcome to attend our Annual AGM which is to be held at our base in Lower Moutere on **Monday 2nd May from 5.30pm**. Please rsvp for catering purposes by calling us on 03 526 7842 or drop us a line to info@wio.org.nz.

Secondary Programmes at WIO that earn NCEA credits

If you attend one of our local secondary schools, you are able to apply to attend one of the Trades Academy Programmes that will run for 4 x 1-week blocks across the second half of the year. They are a great way to take your learning outside, meet new people and build future employability skills. Options include Adventure Tourism Leadership (Level 2 & Level 3), Manaaki Tāpoi (Level 3), Uniformed Services (Level 2) & Civil Defence Emergency and Response (Level 3). It's not too early to start thinking about these as options for 2023 either! If you'd like to find out more, chat to your Trades Coordinator at school or check out: www.wio.org.nz

Thanks to New Zealand Community Trust

We simply couldn't be out on programmes without the continued support of our funders. We'd like to shine a light on the funding received from the New Zealand Community Trust for important gear such as the helmets featured in these photos!!

The Team at Whenua Iti.



A fun day of outside activities on the Rā Ora Programme.



Ignite students on the Kawatiri River as part of their final trip

We'll see you out there!

www.wio.org.nz



Feel like you have tried everything?

Still got pain?

Try Bowen Therapy!

Gentle, Effective & Relaxing

For bookings or more info contact Better Bodies Mapua
www.betterbodies.nz
Suzanne 021 1414937

CRUX

ADVICE & ACCOUNTING

Nathan Silcock
Director

M 021 154 1333
P 03 539 0645
E nathan@cruxadvice.co.nz
PO Box 494
Nelson 7040



TBSL tasman bay
SCAFFOLDING LTD

**THE ONLY
MOTUEKA BASED
SCAFFOLDING
COMPANY**

Give us a call 021 436 832
or email tasmanbayscaffolding@gmail.com
today to discuss all your scaffold requirements

scaffolding hire for all budgets

Providing gentle
guidance when you
need it most.



**Simplicity
Funerals**

Simply respectful. Simply affordable.

Anna Loach
Manager / Funeral Director
Dip FD Reg. FDANZ

**NELSON & TASMAN WIDE,
WE'RE PART OF YOUR COMMUNITY**

Phone 03 929 5145 | 276b Queen Street, Richmond
nelson.simplicity.co.nz



Tile It

*Custom Tiling
Waterproofing
Wood Flooring*

Tom
021-0485649
03-5432644

Heine's

Cartage and Contractors

We have trucks, excavators, a dozer,
a grader, and the expertise to do all your
cartage, drainage, building site &
foundation, roading, and subdivision work.



40 years of local knowledge
and experience in the transport and
contracting industry

Phone Wayne on 03 5432 788
027 430 2725

Or call in at our workshop and office at
1455 Moutere Highway
(by the firestation)
UPPER MOUTERE

News from Mapua Bowls Club

THE WRITE BIAS

As always the end of the season seems to have arrived far too quickly. Closing Day is scheduled for Saturday 30th April but that doesn't mean the Club goes to sleep until springtime. Far from it; members meet every other Friday from 5 p.m. to socialise, play some indoor games and share a supper and conversation.

But the major project for the winter months is the renovation of the green. Whilst the surface appears green and beautiful at the moment, when levels were taken it was shown to be extremely uneven across the whole area and this discrepancy needs to be addressed. We are going to be busy!



A tournament for men only had to be rescheduled when omicron reared its ugly head, but it was able to go ahead with a full house on Tuesday 12th April. This was a new format for Māpua and proved to be very popular. We were very fortunate to have the sponsorship of Solander Gourmet Seafoods for the event. The overall winners came from Takaka Bowling Club and the winners of the Plate competition were a team from Stoke Bowling Club.

For any information about bowling, coaching, indoor winter socials or booking the clubhouse and facilities, please contact the secretary, Di Blanchet on 03 540 2627 or check out our website, sporty.co.nz/māpuabowls

Sue England

Local mum lifts heavy

Our local Amanda Stilwell competed in the recent Canterbury Provincial weight lifting Championship and was placed 3rd in her open category under 84kgs class. Her amazing last lift of the day was 165Kg in the 'squat and deadlift'. Wow –

Congratulations Amanda – a busy working and studying mum - we look forward to reading more about your achievements as you open your local Fitness Centre and help us to feel fitter and stronger with your skills.



Anzac poem – Ellie D

Poppy Poppy what do you say?
Please wear me on Anzac Day
All the soldiers fought for
us so now we pray on the day.
Red poppy what do you tell
Many soldiers in the battle
Fell. With the ringing bell
in my ear that is all I can hear.

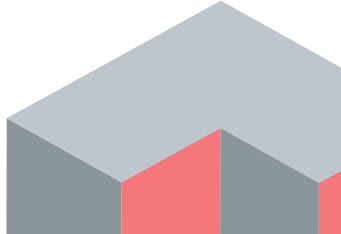
Anzac Day Poem – Charlie R

The ground red with blood,
blood of the soldiers that saved us from
enslavement.
We thank you,
When we look up at the sky we think
about your sacrifice,
and we thank you.
Every day we get older when you do not.
Lest we forget your sacrifice to us,
We thank you.

JasonFrater

BUILDERS LTD

**BUILDING
OUTSIDE
THE BOX**



021 743 497
www.jasonfraterbuilders.co.nz
info@jasonfraterbuilders.co.nz

Beautiful Homes and Creative Spaces



Motueka/Tasman

**Auto/Marine Upholstery & Outdoor
Shade Solutions.**

Caleb Hill- 18 years industry experience.
0273620048
acanvasltd@gmail.com
2529 Moutere Highway, Lower Moutere 7175.



MyPersonalPlumber

Alex Bint

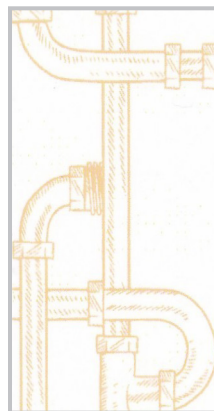
0800 444 343

027 542 4329

alex@mypersonalplumber.co.nz

www.mypersonalplumber.co.nz

1366 Moutere Highway,
RD1, Upper Moutere, 7173



Mark Carey CONTRACTING LTD

Mark: 021 454 000
Anne: 021 454 731
Phone: (03) 526 7004

Email: mark.carey@xtra.co.nz
28 Holdaway Road
RD2 Upper Moutere Nelson 7175



www.markcareycontracting.co.nz

**FUEL FOR
SCHOOLS**
School Sponsorship Programme

**EVERY FUEL PURCHASE EARNS
REWARDS FOR OUR LOCAL SCHOOLS**



**We look forward to looking
after your vehicles this year.
Please phone and talk to
Tim to book your vehicle in.**

Horse Cover & Gear Repairs

**Horse Cover Washing
Prompt Service
Good Rates
Contact Lawrie**

1350 Moutere Highway

Ph: 03 543 2234

021 208 2192

Main Road
Upper Moutere

Ph 543 2707

mouteremotors



Want to get in touch?

Email us at:

mdba@mapua.co.nz

May 2022

The final month of Autumn is upon us. Hasn't the weather been stunning. Hoping you are all doing well out there and getting onto some projects that have been on hold over the summer months.

MDBA MISSION STATEMENT

To form supportive relationships for local businesses to thrive.

OUR CORE VALUES

Stronger Together

As local businesses working together, we seek opportunities to influence, advocate, and lead on behalf of our members.

Respect for place and people

We are kaitiaki for the places that we live and work. We consider the impact on our environment and our communities in our planning.

Inclusivity is key

Knowledge sharing across different industries can help us better learn and thrive. All businesses in our region are welcome and can find support.

WE ARE LOOKING FOR A SECRETARY

We are looking for someone to join the MDBA committee as the secretary. Want to be involved in your local business community, be a part of a small committee with big ideas who cares about our region's small businesses? We meet on the first Tuesday of each month for a committee meeting at Rimu Wine Bar Cellar Door.

We'd love to hear from you, contact Kirsten on P: 027 327 6010 or email mdba@mapua.co.nz to find out more. *Cheers from the MDBA committee.*

MDBA ANNUAL GENERAL MEETING 2022

WEDNESDAY 22 JUNE, 2022—7pm RIMU WINE BAR, Mapua Wharf

It's that time of year again, we have locked in the date for our AGM.

We are excited to have Mayor Tim King as our guest speaker this year. RSVP is a must, email Kirsten on mdba@mapua.co.nz to register and secure your spot.

The AGM will follow promptly to update you all on the year that was in the Chair's report, finances and the current budget. We are looking to onboard a secretary and two new committee members. If you are keen to be a part of the MDBA committee please submit your interest to Kirsten prior to the AGM via mdba@mapua.co.nz or on the night.

RSVP by Monday 20 June, mdba@mapua.co.nz



Supporting local
businesses since
1992.



*NEW MEMBER UPDATE *WELCOME ABOARD FLAXMORE VINEYARDS*



TASTE - one of the Moutere's newest wine labels from an established boutique vineyard.

WALK - explore the vineyard for stunning views across the Moutere valley to the Kahurangi ranges beyond.

ART - enjoy a visit to our unique gallery.

This family vineyard crafts sublime wines from hand-picked vines on Flaxmore's beautiful rolling slopes in the Moutere hills. Careful attention to detail fully expresses this stunning vineyard's special character. Visitors love the vineyard walk, views and art gallery.

Best contact details / current hours

Winter hours by appointment - please call us on 027 527 8680
24 Flaxmore Road, Upper Moutere

PGG Wrightson Real Estate

Introducing Doug Smith

I have been living and working locally since 2008.
Use my experience, honesty, integrity and work ethic to deliver you the highest value for your number one asset.
Competitive commission and marketing tailor made to your individual requirements.

I welcome your call for a no obligation appraisal and any advice I can give you.

**Professionalism
Knowledge
Competitive Pricing**



M 027 543 2280
douglassjcsmith@pggwrightson.co.nz

www.pggwre.co.nz Licensed REAA 2008

Helping grow the country

Hon Damien O'Connor

MP for West Coast-Tasman

Minister of Agriculture, Biosecurity and Food Safety
Minister for Rural Communities
Minister of State for Trade and Export Growth



Freephone: 0800 326 436

181 Tainui St, Greymouth
Phone 03 768 7189

208A Palmerston St, Westport
Phone 03 789 5481

234 High St, Motueka
Phone 03 528 8190



/damienoconnormp



@damienoconnormp



Labour

Authorised by Hon Damien O'Connor, Parliament Buildings, Wellington

A great job at a GREAT Price!

SUN ELECTRICAL

Phone: 03 540 2367

www.sunelectrical.co.nz

Tony: 027 3784 580

Troy: 022 080 4751

124 Aranui Rd
Mapua, Nelson 7005
sunelectrical@xtra.co.nz

Domestic
Industrial
Commercial
Caravan WOFs
Solar Power Systems

Our highly skilled and experienced electricians can provide solutions to meet your electrical needs

- New house/shed wiring
- Rewiring
- Alterations and repairs
- Hot water elements and thermostats
- Energy saving solutions
- Power bill forensics
- Garden and outside lighting
- Solar power systems
- Caravan electrical warrants
- Sewerage and pumping systems
- Test and tag
- Switchboard upgrades and replacements
- Oven and store repairs
- Urgent breakdowns
- Industrial wiring and maintenance

www.sunelectrical.co.nz

MOTUEKA ELECTRICAL



Motueka Electrical Limited
027 588 5774 or 03 528 4488
<https://www.motuekaelectrical.com>

LUUK HERMENS

027 588 5774

03 528 4488

motuekaelectrical@mail.com

HEAT PUMP SUPPLIER & ACCREDITED INSTALLER

Soil issues

'It all comes down to money'

Article sent in by Concrete & Metals

My mother always objected to my parting comment, "must away and earn a dollar", when heading home to milk the cows. Money was never discussed, typical of that time, and it wasn't until interest rates on the farm mortgage rose from 7.5% to 10% that out of necessity all outgoings became thoroughly scrutinized. Farming was regarded as a 'way of life', and because the country was still largely reliant on income from meat, milk, and wool, farming practices were secure from close examination. The picture is different now with fewer folk directly connected to farms. Income from tourism and industry means that income traditionally derived from pastoral farming, orcharding, and other horticultural enterprises has lost much of its protected status.

A good reason for farmers to embrace more holistic farming practices is the extra income achievable from absolute top-quality food, usually sold to the discerning and wealthy for whom cost isn't a serious consideration. Decisions are based on image, and brand New Zealand must be protected if we are to prosper.

We're only as good as our weakest component; the fundamentals must be right: and it all starts with the soil which is a living breathing organism the intricacies of which we are still learning. Calcium is one of the key inputs and all good farmers know that lime increases earthworm numbers, and where they proliferate so do all other beneficial soil dwellers which speed the rate of nutrient cycling. This, in turn, lifts total plant performance, and reduces fertiliser costs.

Robust gardening practices are particularly important in autumn as they set the stage for spring performance. Speeding the digestion of old root, leaf, dung, and other organic matter means more nutrients are available for plant uptake over winter and early spring. The result is healthier, more vigorous spring growth with less incidence of pest and disease. Crops mature a little earlier and animal target weights come forward. Functional Fertiliser developed two soil improvers, CalciZest and DoloZest, over twenty years ago to improve physical soil structures and lift plant and animal performance. They have been used locally on pasture for several years and this spring were applied to horticultural crops with encouraging results to date.

For more information call Peter on 0800 843 809.



**CONCRETE
& METALS**
TASMAN BAY LTD

CalciZest & DoloZest

Now available ex Motueka



Capturing Carbon to Secure the Future

www.functionalfertiliser.co.nz

0800 843 809

MOWTIVATED

Lawn & Garden LTD

For all your garden needs:

- ✿ Weeding & Mulching
- ✿ Pruning & Hedge Trimming
- ✿ Push & Ride-on Mowing
- ✿ Brush Cutting
- ✿ Green Waste Removal
- ✿ Lifestyle Blocks

Something you want done not listed above?

Give us call!



Michael and Anita are a husband and wife team with a passion for providing excellent quality garden services. We are not afraid of taming wild gardens.

027 599 3304

No job too small, just give us a call. Free quotes!

Trade and Professional Services List

Please support our advertisers

What	Who	Contact
Accommodation	Tasman View Accommodation	www.tasmanview.co.nz
Accounting Bookkeeping	Crux Advice & Accounting Ltd	03 539 0645 Mob: 021 154 1333
Acupuncture	Dorothea Tebbenhoff	027 214 6444
Architectural Designer	Leigh Briars	021 215 0946 AH: 03 543 2667
Architectural Designer	Simone Wenk	021 1049 039 AH: 03 540 3282
Barley	Whole barley 25kg bags	021 454 731
Builder	Andrew Eggers	027 446 0739 AH: 03 543 2757
Builder	Jason Frater	021 743 497 AH: 03 528 0337
Builder	NTC	021 140 8077
Caravans	Kina Campers	www.kinacampers.co.nz
Chiropractors	Tasman Bay Chiropractic	03 544 4554
Child Care/Early Childhood Education	Country Kids Manager - Nickie	www.countrykids.org.nz
Clothing	Jacqui's Pre-loved and More -Jacqui	027 346 4071
Composting Toilets	Biolo - Rick Stokes	021 1029 098 / 03 526 7882
Concrete	Concrete & Metals Tasman Bay	03 528 6344
Contractors	Tasman Earthworks & Construction	021 119 2239
Contractors & Cartage	Wayne, Heine	027 430 2725 AH: 03 543 2788
Electrician	Electrical Worx	0800 967 948
Electrician	Motueka Electrical - Luuk Hermens	027 588 5774 AH: 03 528 4488
Electrician	Sun Electrical - Tony	03 540 2367 Mob: 027 3784 580
Food for Community (Food Bank)	Kai Collective	021 2626 675
Hairdresser	Country Cuts	027 472 8863 AH: 03 543 2297
Hairdresser	The Basin - Louise Dunlop	022 354 8771
Hay and baleage production	Mark Carey Contracting	021 454 000 AH: 03 526 7004
Health & Wellbeing	Greenworld Health & Lifestyle	03 528 7262
Horse cover/gear repairs	Lawrie	03 543 2234 Mob: 021 208 2192
Horse therapy	Tasman Equine Therapies	027 452 3906
Kitchens	Moutere Village Kitchens - Steve Farmer	021 0839 1206
Landscaping	Mow-tivated Lawn & Garden	027 599 3304
Landscaping	Hardy Landscapes - Michael Hardy	021 443 908 AH: 03 543 2555
Lawyer Legal Services	Pitt & Moore	03 543 9090
Lawyer Legal Services	The Legal House - Yvonne Watson	03 548 7839
Massage	Fiona Ramsay	027 452 3906
Mechanic	Moutere Motors	03 543 2707
MP	Damien O'Connor, Labour Party	0800 DAMIEN
Nursery	The Nursery @ 35 Horton Road Tasman	021 122 3056
Painter	Vision Painting Tiling & Plastering - Glen	020 4091 7929
Play Group	Karen Barnett	021 252 2657
Plumber	My Personal Plumber - Alex Bint	027 542 4329 AH: 0800 444 343
Property Maintenance	Rod Dohrman	027 433 3048
Pub/Restaurant	The Moutere Inn	03 543 2759
Real Estate	Bayleys - Matt Galvin	027 768 6288
Real Estate	PGG Wrightson - Doug Smith	027 543 2280
Real Estate	You.Realty - Debbie	021 462 629
Recreation Centre	Moutere Hills Community Centre	03 543 2516
Scaffolding	Tasman Bay Scaffolding Ltd	021 436 832
Social Club	Beryl or Shirley	03 543 2122 / 03 543 2438
Spraying	Endurance Spraying - Pete Hughes	021 194 2654
Tiling	Tile it - Tom	021 048 5649 AH: 03 5432644
Upholstery	Adventure Canvas, Auto / Marine - Caleb Hill	027 3620 048
Vet	Town & Country Vet	03 544 1200
Water	Water Filtration & Pumps - Frans	0275 281 366
Winery	Neudorf Winery - Tim and Jude	03 543 2643
WOF	Motueka Vehicle Testing Station - no booking required	25 Huffam Street
Youth Group	Tessa Werner	022 101 2276
Yoga	Sunshine Valley Rd, Upper Moutere - Clare Sutton	027 643 3130