

The Grapevine

NOVEMBER 2021

MOUTERE HILLS COMMUNITY NEWS

Inside this issue:

- 2 Grapevine Information
- 5 Whenua Iti
- 7 Founding Beuke Bush Track
- 8 What is Biodynamics?
- 9 MDBA Update
- 10 Mapua Bowls
- 11 Tasman Art Focus Group
- 13 The Making of a garden
- 15 Horoscopes
- 17 Sarau Festival UPDATE
- 18 MH Community Centre
- 21 Upper Moutere School /
UM Playgroup
- 28 Trades & Professional LIST

Special points of interest:

**Sarau Community Festival
2022 is taking a break, read
more on page 17...**

Thank you for
reading the
Grapevine and
for supporting the
advertisers.

FREE DELIVERY
Donations
appreciated.



Karen with two of her proteges

Learning for life

Hitchhiking alone across the Nullarbor, a 'survival of the fittest' stint on Bullo River Station (of Sara Henderson fame) and completing seven of New Zealand's Great Walks in four months. It sounds daunting, but not for Upper Moutere local Karen Dean – all of these are on her 'been there, done that' list.

Originally from England, she has lived in the village for nearly 20 years, definitely a local! And after many adventures is now happy at home mentoring members of our younger generation in the art of dressmaking – perhaps a dying art, given the vast quantity of cheap, mass produced clothing that's readily available, and

definitely one that Karen feels is not catered for enough in our school curriculums.

Karen began making her own clothes at age nine because she didn't get pocket money, and went on to excel in sewing and tech drawing. Of her two passions, clothing construction and architecture, the former was considered a better choice for girls, so she qualified in fashion design. She has been a costume maker for theatre productions, a needlework teacher and a drama assistant in a posh English girls' school, a designer of boutique fashion and a couturier dressmaker, specializing in one-off ball and wedding gowns. Her clothing creations have been worn by

cont. pg3

PLACING AN ADVERTISEMENT

Thank you for advertising in the Grapevine—you help us cover the cost of producing and delivering this free community newsletter each month.

The deadline for each issue is the 15th of the month.

Please email your print-ready ad (JPG, PDF, or PNG preferable) to:

umograpevine@protonmail.com

The following prices apply for advertising:

- ∞ Births, marriages, deaths and giveaway notices: free
- ∞ Business card size advertisement: \$12
- ∞ 1/4 page advertisement: \$25
- ∞ 1/2 page advertisement: \$50
- ∞ Full page advertisement: \$95 (if space available).

Please deposit payment (and identify it with your name) to our account: NBS 03 1354 0229034 16.

Sending us articles of interest

We warmly welcome contributions to the Grapevine from all residents in the Moutere and Tasman regions. You make the newsletter an interesting read! There is no cost for having your articles published if you are telling the community about a fundraising venture. However we do appreciate a donation from commercial ventures to help us cover our printing costs—see above for bank details.

Archived coloured copies of the Grapevine are available at www.mouterehills.org.nz/community/the-grapevine courtesy of the Moutere Hills Community Centre Staff.

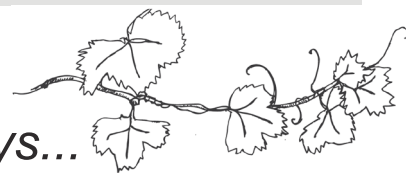
Grapevine circulation is 1400 copies. This issue has been constructed by volunteers: Rachel Field, Edith Bulle, Beverly Sellers, Jenny Leith, Sharon Beuke, Bessie Adie and Miriam Lynch.

WE ARE LOOKING FOR VOLUNTEERS FOR ACCOUNTS - PLEASE CONTACT US!

Disclaimer

Views expressed in articles in The Grapevine are not necessarily those of The Grapevine team or its editor. While every effort has been made to ensure the accuracy of the information included in this publication, The Grapevine takes no responsibility for errors or omissions or for any consequences of reliance on this information. Publication of advertising material implies no endorsement of either a product or a service.

Grapevine Says...



We love getting local news out to you. Please send in your articles and interesting tid bits for us to print. The next issue will be for December / January, so remember we print more for the visitors to the district to pick up - make sure you are included.

A special thank you to Tom Smith who has stepped up and sorted out a new accounting system for us. It would now be a very quick task for someone to manage monthly - please put your hand up to be part of the team

Finally – don't forget, we have a new email address: umograpevine@protonmail.com

NZ
LANDCARE
TRUST

**FARM
ENVIRONMENT
PLANS**

FOR LIFESTYLERS AND SMALLHOLDERS

- 26th October to 4th November -

Register at: <https://bit.ly/FEPwebinar>

Offered by Annette Litherland (NZ Landcare Trust)
& Mirka Langford (TDC Senior Resource Scientist)

TBSL tasman bay
SCAFFOLDING LTD

**THE ONLY
MOTUEKA BASED
SCAFFOLDING
COMPANY**

**Give us a call 021 436 832
or email tasmanbayscaffolding@gmail.com
today to discuss all your scaffold requirements**

scaffolding hire for all budgets

the rich and famous, appeared at royal parties and on the catwalk in haute couture collections. Small wonder then that she has a wealth of knowledge, experience and creative energy to share.

In the late 90's, when it was time for a change, a round the world ticket found her in Sydney, where a meeting with a Nelson born designer led to a two year stay making prototypes for fashion collections. This was also the chance to explore Australia, the outback, the Nullarbor, and Bulla River – impressive experiences for an English girl travelling solo on her first world trip!

New Zealand followed, and here a 2 week stay became four months and

eventually permanent. Karen was captivated by the people, and the great outdoors. She says of her first walk – 'The Kepler track blew my mind and was very empowering'. By now in love with tramping, she carried on to do seven Great Walks in four months. When residency was granted in 2002 she made her home in the Upper Moutere Village and still loves the expansive views she has of Mt Arthur and the valley. At first a house and a shed, then the shed was extended to make a second cottage, where she now lives.

To combat the isolation of lockdown she undertook renovation projects – respringing and upholstering furniture, painting a roof, sanding the

deck, replacing skirting boards, nothing fazes this industrious lady.

In recent years she chose to give up her job as a curtain consultant to help her Dad who had dementia. She also looked after family in Dunedin, where she has built herself a tiny house, while dreaming of renovating a derelict house there. She still walks, with local group 'Wild Women Walking'. Karen, like many of us, looks forward to the time when she can travel overseas again, when it is not just 'something that we used to do'. In the meantime local young ones are happy to be able to learn an invaluable life skill, from someone so well qualified to help. ☘

Karen can be contacted on: karendeannz@gmail.com



NEUDORF

VINEYARDS

Neudorf Vineyards is looking for a staff member to join our team over the summer months in the cellar door.

This position is full time from December to February, but with some flexibility around start and finish dates so would suit a university student.

The role is a customer facing support person and involves both hospitality and retail work. We are looking for someone with an interest in wine, but experience is less important than warmth and presentation.

Please email expressions of interest to cellardoor@neudorf.co.nz

MOUNTAIN VIEW

Building & Joinery
Maintenance Services

No job too small

Ph: 027 5520063

- Carpentry
- Joinery
- Residential/Commercial
- General Maintenance
- Flat pack kitchen/furniture assembly & installation services
- Gib repairs & plastering
- DIY assistance
- Building Act/Code & Schedule 1 Guidance

National Diploma in Building Control Surveying



Motueka/Tasman

**Auto/Marine Upholstery & Outdoor
Shade Solutions.**

Caleb Hill- 18 years industry experience.
0273620048
acanvastd@gmail.com
2529 Moutere Highway, Lower Moutere 7175.



TASMAN VIEW
Accommodation

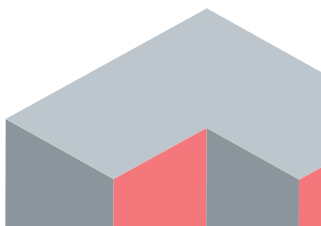
903 Tasman View Road
Lower Moutere
021 119 2239
www.tasmanview.co.nz

GREAT TASTE TRAIL
Official Partner

JasonFrater

BUILDERS LTD

**BUILDING
OUTSIDE
THE BOX**



021 743 497

www.jasonfraterbuilders.co.nz

info@jasonfraterbuilders.co.nz

Beautiful Homes and Creative Spaces



HAIRDRESSING

CALL TO ARRANGE AN APPOINTMENT

(03) 5432297 • 027 472 8863

**EVERY FUEL
PURCHASE
EARNS
REWARDS
FOR OUR
LOCAL SCHOOLS**



**We look forward to looking after
your vehicles this year.
Please phone and talk to Tim to
book your vehicle in.**

mouteremotors

Ph 543 2707

Our latest adventures...

OCT / NOV 2021



Caving, Sea Kayaking, Rock Climbing & Tramping through the Holidays!

It was a busy few weeks with 7 different holiday programmes on the go. Students were buzzing after the Adventure Leadership and Adventure Skills Development Programmes - there were some challenging adventures from lack of sleep in wind-battered tents through to tight cave squeezes. Instructors were impressed with how well the groups managed and supported one another. The younger tamariki on our Kaitiaki Kids & Go Wild programmes had a blast out in nature, visiting ngāhere (bush), moana (ocean), awa (river) and looking after te taiao by spending some time helping the Banded Rail Project with Tasman Environmental Trust. A special thanks to the **Mckee Charitable Trust** for sponsoring places on these programmes!

Connecting to te taiao (the environment) through art

We were super excited to have Daryl Frost from Frost & Fire Gallery along to help us connect to te taiao through art with some nature-based clay creations on our recent holiday programmes. The tamariki from both our Go Wild & Kaitiaki Kids programmes had great fun getting messy with the clay, and for some it proved a little challenging! With a little positive encouragement from their new friends, everyone has produced a magical piece of art. Tēnā rawa atu koe Daryl - loved having you here. Ngā mihi nui to **Tasman District Council** for funding through Creative Communities to provide this awesome experience.

Holiday Programmes available on the West Coast this Summer

We are heading to the coast this summer to run holiday programmes in January thanks to funding from **Sport Canterbury Tu Manuwa Fund** and **Lottery Community Grants**. Please spread the word to friends & family on the coast! Details are on our website. We highly recommend getting in early for all holiday programme bookings to ensure you get your preferred dates. Head to www.wio.org.nz to book.

Free Programmes Available for Secondary Students

We still have a few free places available on rangatahi leadership programmes for local students aged 16-18yrs in November & December thanks to funding from Top of the South Trades Academy, West Coast Trades Academy, Jobs for Nature, the Whenua Iti Foundation and other community support. There are 3 to choose from - **Adventure Leadership** (7-14 Dec), **Adventure Skills Development** (7-15 Dec) and **Kaitiaki Leadership** (16-24 Nov). These will suit students who enjoy practical learning, could do with a boost of credits and some time outdoors and who don't have many external assessments. Find out more & enrol via www.wio.org.nz or get in touch with your school Trades Coordinator or Dean.

Ngāti Koata Trust Wānanga Series

Ngāti Koata Trust have partnered with us to deliver a series of leadership wānanga for Ngāti Koata rangatahi designed especially with and for whānau. The first wānanga is a Waka Ama Journey on 15-18th November designed to increase rangatahi self-confidence, cultural connection, and develop a strong sense of belonging to iwi and significant whenua. The wānanga will be an opportunity to learn and celebrate te reo Māori. It is free for Ngāti Koata Rangatahi in Years 9 - 13 to attend. To apply head to ngatikoata.com.



Students on the Adventure Skills Development Programme



Having fun making nature clay creations on the Go Wild Holiday Programme

We'll see you out there!



www.wio.org.nz

Experiential Learning Inspiring Positive Change

PGG Wrightson Real Estate

Introducing Doug Smith

I have been living and working locally since 2008.
Use my experience, honesty, integrity and work ethic to deliver you the highest value for your number one asset.
Competitive commission and marketing tailor made to your individual requirements.

I welcome your call for a no obligation appraisal and any advice I can give you.

**Professionalism
Knowledge
Competitive Pricing**



M 027 543 2280
douglassmith@pggwrightson.co.nz

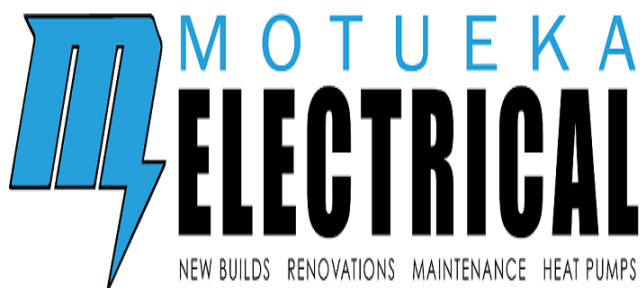
www.pggwre.co.nz Licensed REAA 2008

Helping grow the country

Native & Tree Lucerne Plants for Sale

\$2.50 each
Approximately 500 mm High
in 7cm pots
suitable for reveg. plantings

Contact
Kōtare Liners
Upper Moutere
on
021 244 8155
for more information



NEW BUILDS RENOVATIONS MAINTENANCE HEAT PUMPS

LUUK HERMENS

027 588 5774

03 528 4488

motuekaelectrical@mail.com

HEAT PUMP SUPPLIER & ACCREDITED INSTALLER

MOWTIVATED

Lawn & Garden LTD

For all your garden needs:

- ✿ Weeding & Mulching
- ✿ Pruning & Hedge Trimming
- ✿ Push & Ride-on Mowing
- ✿ Brush Cutting
- ✿ Green Waste Removal
- ✿ Lifestyle Blocks

Something you want done not listed above?
Give us call!



Michael and Anita are a husband and wife team with a passion for providing excellent quality garden services. We are not afraid of taming wild gardens.

027 599 3304

No job too small, just give us a call. Free quotes!

Founding Beuke Bush Track



Upper Moutere School students getting involved. Photograph by E. Easton

Thanks to the collective effort of a large group of individuals and groups, the establishment of the Beuke Bush Track is on its way to being a community native bush walkway for all to treasure in the heart of the Moutere.

“The 10.7 Ha of native bush in Neudorf was covenanted with the QEII in May 1984. Two thirds of the covenant is on flat land and the rest a steep hillside with the Neudorf stream running through it. There has been a lot of work done over the years on weed control and pest control lines have recently been upgraded and extended.

Over the last year we have fenced the Neudorf stream from the Rosedale Road to our boundary up stream of the existing covenant. The newly fenced area includes totara trees close to the stream but outside existing fences which have nearly all been replaced. Also included in the new area

are a couple of wetlands and low-lying flat areas. The area inside the new fencing is similar to the area of the existing covenant, taking the total reserve area to around 20 hectares.

Over 17,000 natives have been planted this year. We acknowledge assistance of the Moutere Catchment group who have funded half the fencing and this year's preparation and planting, as well as Upper Moutere school, who have helped by providing plants and planting time.”

Brian Beuke

With the fencing being completed in autumn this year, and the majority of planting done in winter, the next step is the track itself.

“Beuke Bush Track will start at a car park next to the [Rosedale] road and travel through newly planted natives alongside a stream. Approximately 807 metres along,

it comes to a block of mature native bush. The track will meander through the spectacular mature native bush for approximately 612 metres being sure to pass by some of the tallest and oldest rimu and kahikatea in the area. At the end of the mature bush the track meets back up with the stream for the final stretch. The track follows the stream for 738 metres through some newly planted natives and some to be planted areas, till it comes to the end of the property. The purpose of the track is to ensure easy access to the areas to be planted and for maintenance of the newly planted areas. Most importantly the track will offer access for us all and future generations to enjoy the spectacular flora and fauna the area has to offer for years to come.” Sam Knowles, Motueka Track and Trail Ltd.

If you want to be part of the community project, 'Friends of Beuke Bush Track' email: ruthbeuke@gmail.com ☼

CWS

CompleteWaterSolutions

**COME AND SEE US
FOR A GREAT DEAL**

Your local suppliers of
**TANKS, PUMPS &
UV FILTERING SYSTEMS**



24 Huffam Street Motueka

Ph: 528 0040

www.cwsnz.co.nz

What is Biodynamics?

This question will be taken up and presented in theory and practice, providing an interested public with enough information to take home to their own garden.

In the Hay Barn on the Motueka Steiner Farm School premises, 49 School Road, Lower Motueka eight monthly workshops around bio-dynamic principles will be held by experienced bio-dynamic practitioners from the NZ bio-dynamic Association and are funded by the Ke Teora Trust.

In the first one, which will be held in two parts on Saturday, November 13th, Gita Krennek, who can draw from 30 years of experience with bio-dynamic farming and now lives in Golden Bay, will come and start the day from 10:30 to 11:30 with an introductory talk on "What is Biodynamics", explaining the difference between organic and bio-dynamic practices. She will introduce all the plants necessary to prepare the essential preparations for soil improve-

ment and fertility, as in prep 500 and prep 501, and in compost vitality, as in preps 503 - 507, a knowledge which can be applied in private gardens or farms and will also be implemented on the Farm School grounds. The concept of a BD farm individuality and the relevance of this concept for a farmer will be introduced, and essential features from the bd planting calendar will be briefly explained.

The second part of Gita's workshop from 12:00 to 5:00 will be focused on the actual practical steps towards activating the beneficial qualities of prep 500, like mixing this horn manure preparation with the right amount of water for a particular area, stirring it in the right way together with manure from the cowpat pit and spreading the preparation on the land. This will require some active hands-on application from everybody.

This day-workshop will give an overview of bio-dynamics, might raise a few questions or invite for a share of

experiences, which can all be taken up again in the next workshops or in a study group which can be formed if there is enough interest.

Please bring your own paper bag lunch. The venue will be a hay barn with straw bales to sit about 24 people. We will be working in the hay barn and spread out the prep 500 on the farm premises, so please dress for the occasion, including heavy shoes. A KOHA of 20 dollars for the Noon to 5 workshop is suggested, for the lecture 10 dollars would be appreciated.

If you are interested to join this workshop, please contact either Carolyn Hughes (carolynhughes@foulis.nz) or Edith Bulle (edithbulle@gmail.com).

Further monthly workshops on bio-dynamic practices are planned and will be advertised in the local paper or the Steiner School Newsletter.

Edith Bulle

Whole Barley
25 kg bags
\$20 per bag

Phone 021 454 731 or 03 526 7004





architecture studio | mapua

- Sustainability
- Innovation
- Craftmanship



Simone Wenk
Reg. Architect (Germany), LBP Design 2 (NZ)
03 540 3282 / 021 1049 039
simnewenk@xtra.co.nz

Shed 4, Mapua Wharf
www.architecturemapua.co.nz

Motueka Vehicle Testing Station

Drive in – WOF – Drive out

25 Huffam street

No Booking Required

Turn into Old Wharf Rd and left into Huffam Street.







vision

painting-tiling-plastering

0204 0917 929



Want to get in touch?

Email us at:

mdba@māpua.co.nz

November

Gosh, what a busy time of year ahead of us. Hoping you are all keeping well and looking forward to a great Summer season.

New Monthly Networking Event

Our first catchup at the Sprig & Fern was really well received. Our next, is on **TUESDAY 2 NOVEMBER, 5-6pm @ Bee Haven Sculpture Garden, 39 Foley Road, Ruby Bay**. A monthly relaxed gathering with no agenda other than catching up with each others, sharing information and networking to support each other in business. See you there.

NOVEMBER Lunch & Learn - November 3, 12-1.30pm. FREE EVENT. Getting to grips with Cyber Security - local expert Melonie Cole from Mindshift will help demystify this topic and answer your questions. A hot topic not to be missed. Register mdba@māpua.co.nz

MDBA CHRISTMAS PARTY

It's been another unprecedented, and long year, in parts for everyone in business. So let's say farewell to 2021 in style with once last chance to catch up before the Summer season really descends upon us. **THURSDAY 2 DECEMBER, from 6pm @ Rimu Wine Bar on Māpua Wharf, for drinks, nibbles and giveaways.**

NELSON
TASMAN
BUSINESS
TRUST



MEET OUR NEW MDBA TREASURER

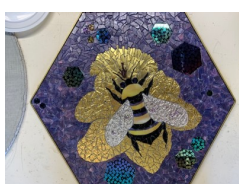
Robbie Mitchell and her husband moved all the way from Nelson to Māpua joining the local team at Harcourts as a Salesperson. I am loving working in the local community, and being able to help bring even more people into the district. It's been exciting watching the growth and diversity of new businesses, including those setting up home based businesses. I have supported businesses across the region for many years while working across the travel, retail, and hospitality sectors with roles in business development, sales and customer service training, and advisory. I am passionate about supporting a prosperous business environment that underpins a thriving community.

The Mapua Districts Business Association is a critical part of this and I am proud to be involved as a committee member. I have a love of wine, the arts, music, and the sea, so I really am in paradise.

NEED MORE LOCAL MAPS OR DIRECTORIES FOR THE SUMMER SEASON?

Contact Kirsten via email mdba@māpua.co.nz and she will organise distribution to you. If you are a member, and need more you can have up to three copies at no charge, then just \$9 a copy for more.

NEW MEMBER — NEW MEMBER UPDATE — NEW MEMBER



BEE HAVEN SCULPTURE GARDEN Hello my name is Maeve Allen, my husband Richard and I are currently developing a sculptural garden on our new Ruby Bay property named Bee Haven (as we're NOT behaving and looking after our bees and other pollinators). I work full time in my studio situated on our property designing and creating sculptures, professional mosaics (not the broken crockery type) private commissions including the occasional public work example below shows the 'Arrivals and Departures' sculpture located on the Motueka marina. I have been working for the last two years on an exciting bee project. The whole idea is to educate the next generation/s about the importance of bees, not just in a food way if we have no bees, we wouldn't have medication, clothing & even our livestock rely on bees to pollinate their food. With this exciting project we have an opportunity to regain some old skills & see things through the eyes of our youth, and we are here to educate everyone how very important bees are to our planet's survival.

Opening hours: by appointment. 39 Foley Road, Ruby Bay Phone or text Maeve on 0274 762 461

E: are.u.beehaven@gmail.com Facebook: <https://www.facebook.com/maeveallenartist>

Supporting Local Businesses since 1992

News from Mapua Bowls Club

THE WRITE BIAS



The much anticipated Opening Day of the 21/22 season went ahead as scheduled with very favourable weather conditions and a green in tip-top condition. It was very well supported by club members with a lot of fun bowling and après bowling in the Clubhouse. A few days have been lost for play since Saturday 18th September because of rain but there is plenty of promise and expectation for the year ahead.

The 6-week group coaching course for club members commenced on Wednesday 29th September with a really strong and encouraging turnout. Individual coaching is also underway and will be available throughout the year.

Once again the weather looked doubtful for the first tournament of the season on Monday 11th October but the threatened rain held off until the evening allowing a fun and successful event to take place. This was Ladies Giggle Day and it was a giggle throughout. The theme of "bright and shiny" brought forth some very creative outfits and prizes were awarded to the top three teams. Spot prizes throughout the day and prizes for the top three bowling teams were generously provided by Nelson Building Society. Māpua Bowling Club is indebted to NBS and all of our sponsors for their ongoing support. The places for three teams that won all four of their games had to be decided by the number of

ends won. They were:

First Place: United, Dianne Potts, Barbara McGregor, Kristine Greaney

Second Place: Stoke, Mary Orbell, Trish Cambell, Christine Hanton

Third Place: Stoke, Lesley Morris, Jenny Vaile, Alison Edwards

We are now looking forward to further tournaments, club championships and the inter-club competition, the President's Trophy.

For any information about bowling, coaching or booking the clubhouse and facilities, please contact the secretary, Di Blanchet on 03 540 2627 or check out our website, sporty.co.nz/māpuabowls

Sue England



**CONCRETE
& METALS**

TASMAN BAY LTD



For a
Free Quote phone
528 6344

AFTER ALL THIS RAIN! HOW'S YOUR DRIVEWAY?

Protect your property before winter sets in. Driveway drainage and gravelling - culvert maintenance and clearing - ditch and stream maintenance.

Locally owned & operated supporting our community

PH 03 528 6344 (24HRS) 99 KING EDWARD ST, MOTUEKA WWW.CONCRETE-METALS.CO.NZ

Tasman Art Focus Group (TGFA)

TASMAN NATIONAL ART AWARDS AND EXHIBITION

Covid didn't stop us!

Sadly there was no grand opening for this year's Tasman National Art Awards and Exhibition but the display of art from all corners of New Zealand went ahead as scheduled for two weeks in Māpua Community Hall.

Three independent judges deliberated for half a day before making the final selection of paintings that received awards. These were as follows:-

Supreme Award: Wendy Lineham of Nelson for "Sunday 3pm Lockdown 2020 NZ"

Merit: Priscilla Clare of Arthur's Point for "Greenstone II"

Merit: Jane Duncan of Upper Moutere for "Still Point"

Merit: Ruth Killoran of Christchurch for "Tree Stories"

Merit: Sierra Roberts of Wanaka for "Rosa with Peonies"

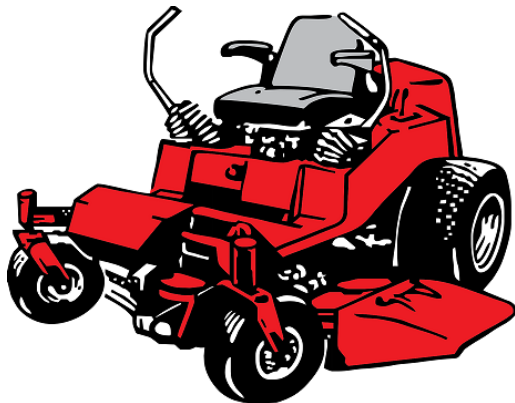
Best Portrait: Maia Hetariki of Nelson for "Ruby"

Best Watercolour: Siobhan Rosenthal of Auckland for "The Picnic I"

It was touch and go whether the exhibition would go ahead but the committee is delighted that it came to fruition. Visitor numbers were high and as of the time of writing, ten artists are very happy to have sold their paintings. Many thanks to everyone who visited, enjoyed, bought raffle tickets and voted in the "People's Choice Award". It would have been disappointing without you!

There will be some changes to the committee for next year. If you might be interested in being involved or for any information regarding this exhibition please contact Glenys Forbes on 03 540 3388 or by email gmforbes@ts.co.nz
Sue England

Quick Cut Lawns



Ride-On Lawn Mowing

Weed Eating

Competitive rates

Tidy work Guaranteed

Call Allan 0225850047

A great job at a GREAT Price!

**SUN
ELECTRICAL**

Phone: 03 540 2367

www.sunelectrical.co.nz

Tony: 027 3784 580

Troy: 022 080 4751

124 Aranui Rd
Mapua, Nelson 7005
sunelectrical@xtra.co.nz

Domestic
Industrial
Commercial
Caravan WOFs
Solar Power Systems

**Our highly skilled and experienced
electricians can provide solutions to
meet your electrical needs**

- New house/shed wiring
- Rewiring
- Alterations and repairs
- Hot water elements and thermostats
- Energy saving solutions
- Power bill forensics
- Garden and outside lighting
- Solar power systems
- Caravan electrical warrants
- Sewerage and pumping systems
- Test and tag
- Switchboard upgrades and replacements
- Oven and store repairs
- Urgent breakdowns
- Industrial wiring and maintenance

www.sunelectrical.co.nz



Green Eden

Call **Mischa** on 027 3788 497



Bank Acc No. 0207 0401 6059 8000

You can
also
catch us
at the
Sunday
Market
in
Motueka!



Manuka - Ake Ake - Flaxes
\$3.00pp - \$ 2.75pp for 20 plus - \$ 2.50pp for 100 plus.

Poa Cita (Grasses)
\$2.50pp - \$2.30 for 100 plus plants.

Looking for certainty re legal fees?

Wary of the timecard being clicked for every phone call,
every email, every single quick question? We offer a quality professional service at
fixed fees to avoid the nasty surprises.

See us for all your Residential and Commercial Conveyancing, Refinancing,
Debt Consolidation, Wills and Enduring Powers of Attorney, Relationship Property, Trusts.

THE LEGAL HOUSE

TLH Law Limited

Josh Boyce L.L.B. Lawyer | Robert Styles L.L.B. Lawyer
Pauline Scott DipLegalExec.NZLS | Yvonne Watson DipLegalExec.NZLS

Now at 33 Trafalgar Street, Nelson

PO Box 332, Nelson 7040

P 03 548 7839

F 03 548 7842

www.thelegalhouse.co.nz

The Making of a garden

It is more than likely that at some stage in the last 40 years you have wandered through the cellar door at Neudorf Winery and spotted the stunning tree in the centre of the courtyard – an Acer Negundo which looks as if it has been there for centuries stands proud with its multiple trunks offering shade to the hundreds of winery visitors each year. This was one of the first trees Tim and Judy Finn planted when they made the move from Nelson City to the Moutere to establish their new life and business more than 40 years ago.

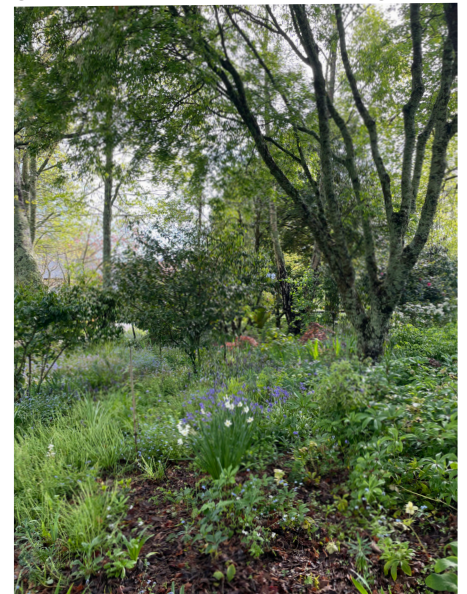
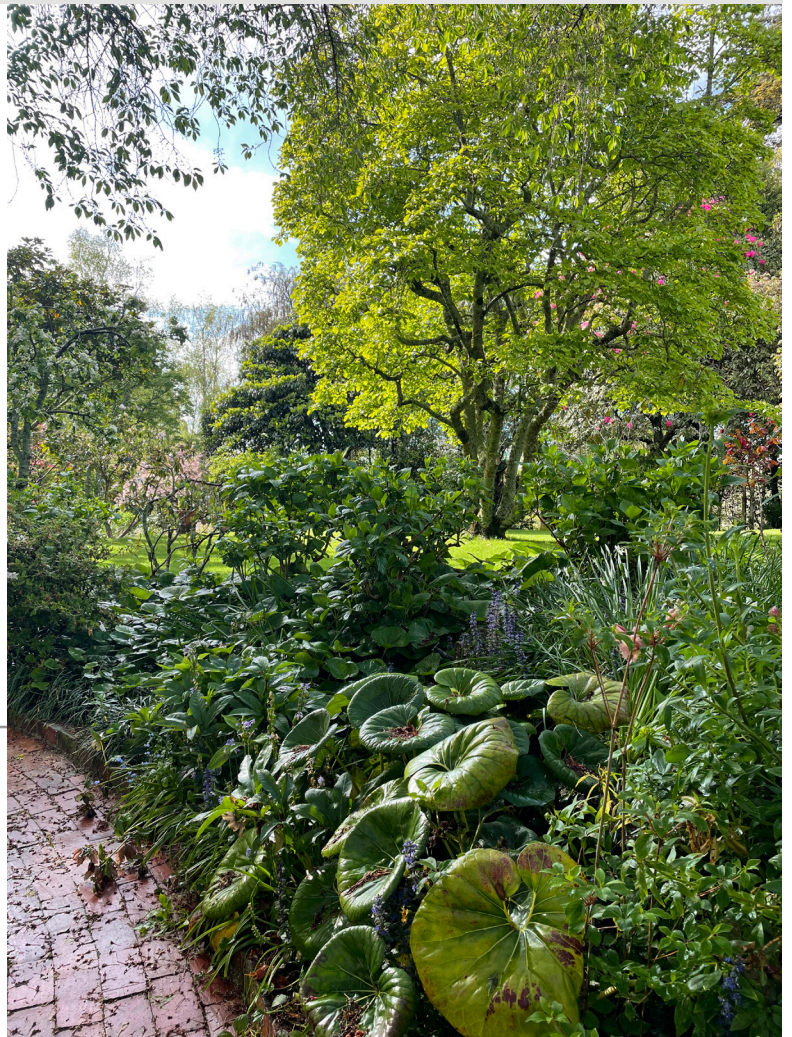
Moving into the early 1900s wooden villa built by the Bosselmann family they set about establishing their vineyard, doing up the house and creating a garden. Early in their journey they milled a couple of macracapas below the house, and it was the timber from these which they used to build the current winery buildings – elegantly silvering with the years and trimmed with maroon facings. Between the house and Neudorf Road remain 4 massive macracapa trees – now limbed up to allow light into the garden and house, and a couple of huge ancient rhododendrons. There is also a stately 5 trunked magnolia spreading its arms over the eastern lawn – but the hundreds of other trees and plants have been placed there by Judy over the

years. When I called by to chat – the best of the magnolia blooms had passed with the weekend rain, and the leaves were just beginning to peak out. The first house on the site was built of kahikatea, but like so many early colonial homes it rotted away – little did the early colonists know what happens to that beautiful timber when in contact with the ground, and so few kahikatea homes have survived the ravages of time. But, what is astonishing in this special garden is at least 3 self-sown kauri have appeared and been allowed to flourish – who would have thought they would grow in this frosty location?

The house garden is large and encircles the house with vegetable and citrus gardens to the west, a narrow strip behind a screening hedge to the north has recently been repopulated into a fernery, and to the east and south are expansive areas of rhododendron, camelia, foxglove, renga renga, hostas, hellebores, Marlborough daisies,

and at this time of year- swathes of bluebells.

Judy grew up on a Taranaki farm with a mother who was passionate about gardening and who, in their early years in the Moutere, used to come and stay and spend her time in the emerging garden. Perhaps that is partly why the garden is cut with meandering brick



cont. pg14

paths, and the low brick walls which edge the sweeping circular drive. Going back generations, Judy's grandmother was absorbed in her South Canterbury farm garden and super-proud of her sweet peas which, with the help of blood and bone sourced from dead lambs, used to grow to guttering height.

A few times a year Judy and Tim have opened their garden to the public for music concerts, and in the past for the Country Occasion on Labour weekend – raising funds for MHCC, the Youth Group and other causes. Of necessity therefore, they have needed to keep the garden appropriate for public use and Judy mourns that the only thing she would like to have created and hasn't, is a large self-seeding

wild flower garden to the north, but it would be at its best and need to be mowed off for the concerts at just the wrong time!

Several decades ago I remember reading in the Grapevine a comment from Judy about how important it was to plant trees visible from the road for everyone to enjoy – this was at the time they were planting the now well established trees in the paddock below their home and winery. That comment has stayed with me, and I too have planted for the passing community, and mourned when trees have been cut down by zealous landowners. With the coming of semi-retirement from the Neudorf business Tim has thrown his energies into planting streams and riparian strips with the

help and energy from the Moutere Catchment Group. What is already a beautiful property will become even more so as the next 4 decades pass. ☼



Rod Dohrman Property Maintenance

rod.dohrman@xtra.co.nz



HANDYMAN PLUS

Kitchen Removals - Cabin & Shed Kit-Set Construction
Carpentry - Decks - Gates - Fences - Walls - Painting
Paving - Concrete Paths - Minor Renovations
Lawn mowing - Scrub Cutting - Hedge Trimming
Long term contracts

Rod Dohrman

027 433 3048

MOUTERE MASSAGE

FIONA RAMSAY

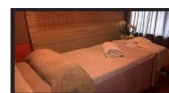
QUALIFIED AND PROFESSIONAL

***SPORTS *DEEP TISSUE *INJURY REPAIR**

***FOOT REFLEXOLOGY *BOWEN THERAPY**

**20 WILSON ROAD
UPPER MOUTERE**

**PH/TXT 027 452 3906
MON, TUES, WED & FRI**



STONESCAPE LANDSCAPING YARD

"YOUR LOCAL LANDSCAPING SPECIALIST"



NEW TO LANDSCAPING YARD 3 TONNE DELIVERY TRUCK

BARK - 10 SCOOPS GRAVEL - 3-4 SCOOPS
COMPOST - 8 SCOOPS SAND - 4 SCOOPS
TOPSOIL - 5 SCOOPS SHELL - 4 SCOOPS

\$40 Delivery Central Motueka Area
Elsewhere normal charges apply



PEASTRAW SMALL BALES ONLY \$16 EACH



RAILWAY SLEEPERS - Length 2.1m ONLY \$60 EACH

**OPEN MONDAY TO FRIDAY 8AM-5PM
AND SATURDAY MORNINGS 9AM-12PM**

STONESCAPE
Garden Supplies

CONCRETE & METALS TASMAN BAY LTD
NEW LOCATION 99 King Edwards St, Motueka
(03) 528 6344 info@stonescape.co.nz

CONCRETE & METALS
TASMAN BAY LTD

<p>Capricorn Dec. 22-Jan. 21 Earth • Cardinal • Saturn "The Goat"</p>	<p>Taurus Apr. 22-May 21 Earth • Fixed • Venus "The Bull"</p>	<p>Virgo Aug. 22-Sep. 21 Earth • Mutable • Mercury "The Virgin"</p>
<p>One day, in the not too distant future, or maybe longer, as you're pushing your trolley through Countdown, mask free, a movie director notices your looks and offers you a part in a movie. You'll become a celebrity, and the paparazzi (or the reporter from <i>The Guardian</i>) will start following you everywhere! The only catch is you have to wait for the pandemic to end, by which time you might have lost your looks!</p>	<p>At this very moment, hundreds of miles from where you are, some of the world's greatest intellects are attempting to change the way you think about sugar-free chewing gum. I'm excited for you.</p> <p>Oh, and when's the last time you checked for monsters under your bed? Might want to look into that...</p>	<p>Do you know how in the movie Groundhog Day, Phil Connors is cursed to relive the 2nd of February over and over again for the rest of eternity? Well, that's about to happen to you, except the day <i>you'll</i> be reliving is the time you broke wind in church and the pastor had to get the church reconsecrated.</p>
<p>Aquarius Jan. 22-Feb. 21 Air • Fixed • Uranus "The Water Bearer"</p>	<p>Gemini May 22-Jun. 21 Air • Mutable • Mercury "The Twins"</p>	<p>Libra Sep. 22-Oct. 21 Air • Cardinal • Venus "The Scales"</p>
<p>You're about to experience the most traumatising health scare of your life. The good news is you'll never have the desire to binge-eat vindaloo again!</p> <p>You'll need to drink large quantities of ice water in a short space of time, which will give you brain freeze. You'll then start to like bad music. No one even notices at first, but then you start wearing sandals with socks, and you get a belly button piercing. Your family throws you a surprise party, which turns out to be an intervention.</p>	<p>Gemini, you will wake up one morning and decide to quit your job and pursue your childhood dream of becoming a pirate. You buy a talking parrot, start wearing an eye-patch, and grow a moustache. Your family won't approve at first, but they will change their minds when they see how happy you are.</p>	<p>You started off the month feeling energised, but unforeseen circumstances have left you feeling listless. For a dynamic sign, you're tired all the time, and you've been finding it difficult to concentrate. This month, prepare to continue to not get any work done. Also, that lingering career anxiety you've been feeling isn't just in your head after all! Don't worry. It's highly likely that your entire profession is screwed.</p>
<p>Pisces Feb. 22-Mar. 21 Water • Mutable • Neptune "The Fish"</p>	<p>Cancer Jun. 22-Jul. 21 Water • Cardinal • The Moon "The Crab"</p>	<p>Scorpio Oct. 22-Nov. 21 Water • Fixed • Pluto "The Scorpion"</p>
<p>Pisces, you love to travel, but for obvious reasons, you haven't been running around as much lately. Ever since August, you've barely ventured out, instead spending the bulk of your time online. It's a good thing you love technology, because the stars predict that you will be logging a lot of Zoom hours again this month. Keep an eye out for a notice from your bank with some unwelcome news about your finances.</p>	<p>Poor, sensitive Cancer. This really isn't going to be your month! Would it make you feel better to know that someone is admiring you from afar? That's right, some attractive stranger's eyes are set on you! Unfortunately, you'll probably never meet the person.</p>	<p>Ever since Mercury entered Pisces in mid-October, you haven't been able to shake an unusual anxiety. Much of your stress is related to new developments in your career, your health, your personal life, your family, global warming, income inequality, the state of our country, and the industry you work in. This month, buckle up, because it's all about to get much worse.</p>
<p>Aries Mar. 22-Apr. 21 Fire • Cardinal • Mars "The Ram"</p>	<p>Leo Jul. 22-Aug. 21 Fire • Fixed • The Sun "The Lion"</p>	<p>Sagittarius Nov. 22-Dec. 21 Fire • Mutable • Jupiter "The Archer"</p>
<p>The moon entered your Tenth House of Career Success at some point, but I've lost track of when, as it's all become a meaningless blur. That said, in normal times your career might be getting a boost right now, but a cosmic shift has thrown everything into limbo. Protect that rainy-day fund. Christmas is just around the corner.</p>	<p>As the life of the party, Leo, you have a hard time settling down, but with Jupiter in retrograde since mid-September, and COVID-19 still being a thing, it might be a good moment to avoid social gatherings. The moon in your Seventh House of Not Being an Idiot suggests that going out in public is a mistake, but if you do, wear your flippin' mask.</p>	<p>This month, Sagittarius, you finally overcome your old paper eating addiction. Yay! Instead, you become addicted to reading <i>The Grapevine</i> and laughing at my jokes. Everyone thinks you're hilarious. This is great for you because once we finally get out of Level 2, you're going to attend a lot of parties, and you'll need this talent!</p>

By Claire Voyant and Chrystal Ball



Tasman Earthworks & Construction operate throughout the greater Nelson and Tasman region, offering a wide range of excavation and construction services.

EARTHWORKS

- All site work and general excavation
- Foundations and footings
- Augering work and hole boring
- Landscape shaping
- Trenching
- Driveways and pathways

CONSTRUCTION

- Qualified Licensed Building Practitioner (LBP)
- All general carpentry work
- Renovations and alterations
- Retaining walls and fences
- Decks and patios
- Property maintenance

We offer a personal and tailored service to meet your needs

Contact us today for an estimate for your next project.



027 385 5998

www.facebook.com/tasmanearthworks www.instagram.com/tasmanearthworks



info@tasmanearthworks.co.nz

tasmanearthworks.co.nz

Providing gentle guidance when you need it most.



Simplicity Funerals

Simply respectful. Simply affordable.



Anna Leach
Manager / Funeral Director
Dip FD Reg. FDANZ

**NELSON & TASMAN WIDE,
WE'RE PART OF YOUR COMMUNITY**

Phone 03 929 5145 | 276b Queen Street, Richmond
nelson.simplicity.co.nz



Dorothea Tebbenhoff
Acupuncture



Licensed Acupuncturist
MAcNZ, Acc Provider

Re-located to Motropolis building
31 Wallace St, Motueka

027 214 6444

www.tasmanacupuncture.co.nz

CRUX

ADVICE & ACCOUNTING

Nathan Silcock
Director

M 021 154 1333
P 03 539 0645
E nathan@cruxadvice.co.nz
PO Box 494
Nelson 7040

Ph 027 435 8101
A/H 03 543 2432



Alan Cooper Builder

Qualified Tradesman for
all Aspects of Carpentry





**SARAU FESTIVAL IS TAKING A
BREAK IN 2022.**

SEE YOU IN 2023!

Ongoing uncertainties mean we have decided not to go ahead with the Sarau Community Festival in 2022 but we will be back brighter than ever in 2023.

A huge thank you to everyone who has come to the Sarau Festival in the past, and to our loyal volunteers, stallholders and sponsors, we couldn't have done it without you - ngā mihi nui!

Proceeds from Sarau Festivals support a range of community causes - including Kai Collective, Country Kids, Moutere Hills Community Centre, Whenua Iti, Kidpower, and many sport and cultural groups as well as individual scholarships and grants to help people in our Moutere Hills community reach their goals...

For 2023 to be a success and to implement the fabulous ideas you've shared with us, we need your input. If you would like to be on the Committee or get involved in any way, we'd love to hear from you. Including making our festival more sustainable, how we celebrate our local talents, and what makes our Moutere so special. Contact us at sarau@saraufestival.co.nz

Thank you for loyal support and we hope you'll be back on board with us in 2023!

SEE YOU IN 2023!

**andrew
builders limited Eggers**

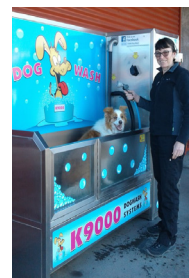


Call us for a quote or estimate on
your next building project

0274 460 739



**TOWN & COUNTRY VET
RICHMOND**



Dog Wash K9000

Coin and note operated

Open 24 hours

7 days



Feel like you have tried everything?

Still got pain?

Try Bowen Therapy!

Gentle, Effective & Relaxing

For bookings or more info contact Better Bodies Mapua
www.betterbodies.nz
Suzanne 021 1414937



Jacqui Kennedy

027 346 4071

1855 Moutere Highway

Upper Moutere 7175

{Opposite Harakeke Preschool}

Opening Hours

Thursday 2-8pm

Friday 2-5pm

Saturday 11-3pm

Or By Appointment

MOUTERE HILLS COMMUNITY CENTRE



Dear Community

It has certainly been a trying month with navigating COVID regulations and the uncertainty that this has created for many. We continue to operate the centre to best meet the current needs of our community which sees us rely on a fantastic team of volunteers, including our board members. We make decisions based on a wide variety of factors, and manage the many demands as effectively as possible. We have seen several emails and letters going around the community and want to take this opportunity to reassure you that Playgroup continues to have a space at the centre to operate. They continue to run their session from the Clubroom space on a Friday from 10am - 12pm and have recently started a new baby group on a Wednesday from 10am - 12pm. We have no intention to "kick them out" and we value the service they offer to the community.

Kind Regards Katrina, Adele, Keith, Cindus

TAKE OUR HISTORY INTO THE FUTURE!

Unfortunately our September meeting had to be postponed due to the recent lockdown and subsequent alert level changes. This has now been rescheduled for:



**Thursday 4 November
1pm**



There will be a talk on the history of hop growing in the Moutere by retired local grower and German descendant, Peter Bensemman.

Country Christmas Market

4th December 10:30am - 3:00pm

ALL STALLS NOW FULLY BOOKED!

Come along and check out all that is on offer
including:

Artisan products / Giftware / Food carts

This year will also include the

NBS

Community
We believe. We invest.

Free Kids Craft Corner



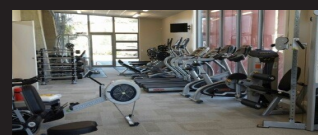
Phone: 543 2516

Email: enquiries@mouterehills.org.nz

Website: www.mouterehills.org.nz



MOUTERE HILLS COMMUNITY CENTRE



COMMUNITY FITNESS CENTRE



Summer Student Special

Join the Fitness Centre for 3 months between
November - February and pay just **\$100!**
NO JOINING FEE!

To qualify you must be 14 years of age or older and be enrolled at a Secondary School or Tertiary Institute. An additional charge of \$30 will apply to 14-15 year olds or should you require a fitness programme. All other usual Terms and Conditions apply. For more information, or to sign up, contact Adele on 0275118826 or adele@mouterehills.org.nz



Personal Training Available

We have both a female and male trainer available to assist you with improving your health, increasing your strength or rehabilitating from an injury. Contact Adele on 0275118826 or Marv on 0273126435 today to discuss how we can help you and for further details, including prices and availabilities.

ONLY \$35!

HKM BODY SCANS ARE BACK!

Saturday 11 December

9am-4pm

Bookings Open Now!

#hkm

See how healthy you are on the inside with this non-invasive scan giving over 40 key body measurements.

Contact Adele: adele@mouterehills.org.nz to book. Spaces limited so get in quick!



Phone: 543 2516

Email: enquiries@mouterehills.org.nz

Website: www.mouterehills.org.nz





NTC
Nelson & Tasman
Construction

ALL BUILDING WORK

LARGE OR SMALL
NEW BUILDS • SHEDS • REPAIRS
ALTERATIONS
DESIGN & PLANNING SERVICE
DIGGER & DRIVER HIRE
EXPERIENCED LOCAL
LBP BUILDERS
0211 408077
ntconstruction@xtra.co.nz
www.nelsonandtasman.co.nz



Heine's
Cartage and Contractors

We have trucks, excavators, a dozer, a grader, and the expertise to do all your cartage, drainage, building site & foundation, roading, and subdivision work.



40 years of local knowledge
and experience in the transport and contracting industry

Phone Wayne on 03 5432 788
027 430 2725
Or call in at our workshop and office at
1455 Moutere Highway
(by the firestation)
UPPER MOUTERE




Matt Galvin
Your local agent

Your **Property** my **Priority**

Thinking about selling? Would you like to know how I can help? Call me today

Matt Galvin 027 768 6288 matt.galvin@bayleys.co.nz

Tree Fall

The tree rooted from the ground, nearly touching space. It had grey wood and a few leaves. Climbing the branches like stairs, I got to the top in seconds. But... I had made a HUGE mistake. It felt like I was touching the sky.

I looked down and froze in shock. When I found my mind again, I heard my friend Sophie yelling at me. "Are you ok up there? Do you need help getting down?"

It was a clear message, but I couldn't answer, it's like my words were paralysed. Trying to move my mouth wouldn't work. Deep breaths didn't help either. I tried to shrug my shoulders at my friend, then I came tumbling out of the tree and hit the ground.

Just thinking about that fall now still hurts me. There was so much pain, especially in my left knee. My friend Sophie tried to help me get up. I took her hand. Suddenly the pain got worse. Everyone could hear the earsplitting scream.

So, the duty teacher carried me to the office where I got an ice pack for my knee and plasters for my humongous cut and smaller ones too.

Finding out my knee was sprained was horrible because the football final was in a week. Taking the news terribly, my friends tried to comfort me and point out the positives. Well, I just couldn't find any positives, it was just too frustrating for me.

Spraining your knee is NOT amusing. I could barely do anything. All I wanted was for it to be healed.

Eventually I started feeling better. This time my friends could point out the positives. Like: "Soon you will be better, also you can nearly walk."

This made me feel delighted.

Using my positive thinking, I continued to heal but I had created a new fear of climbing.

So, I decided to forgive the tree by understanding that it was not the tree's fault, and eventually I reunited with the tree and climbed it again, but I made sure not to look down.

By Saffron
10 years old
Upper Moutere School.



Moutere Volunteer Fire Brigade

Callouts for the month of September.

3/9 MVA Neudorf Road

12/9 Shed fire Westdale Road

28/9 Tractor fire Rosedale Road

UPPER MOUTERE
play
group

WE MEET EVERY FRIDAY 10 - 12^{PM}
MOUTERE HILLS COMMUNITY CENTRE

WE PROVIDE AND SHARE MORNING TEA.
POP IN FOR A CUPPA AND MEET LOVELY LOCAL PARENTS

all FAMILIES welcome!

CONTACT

KAREN 021 252 2657

LEIGH BRIARS ARCHITECTURE

03 543 2667

021 215 0946

briars@ts.co.nz

RD 2 Upper Moutere

Nelson 7175



LOCAL MIDWIFE CLARE SPRATT

Ring Clare for friendly professional maternity care and advice.



I offer full 24 hr maternity care from conception through to 6 weeks post natal, home/hospital and water births, birthing pool available, natural remedies, free pregnancy testing, breastfeeding support and much more.

T: 03 526 7764

M: 0273324929

E: midwifeclarespratt@me.com



CARAVAN RENTAL

Local business offering great value, good quality, well equipped UK caravans available for short and long term rental. Can be delivered and set up to a campsite location of your choice. Short term holiday rates from \$50 a day. Long term static hire from \$100 pw.

www.kinacampers.co.nz

Email: info@kinacampers.co.nz

Referrals, families and new patients welcome

Visit our website or call for more information

Keeping you in the game since 2002



Tasman Bay Chiropractic

Monday-Saturday

03 544 4554

64 Oxford St Richmond

tasmanbaychiropractic.co.nz [Find us on](#)



green world health
& Lifestyle

Sole Supplier of
Dr. Hauschka
Products
in Motueka.



Open 7 Days



177 High Street, Motueka

Ph: 03 528 7262

E: greenworldhealthandlifestyle@gmail.com

{ the basin }

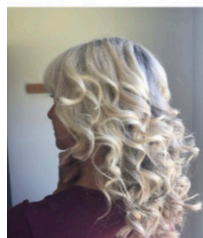
BOUTIQUE HAIRDRESSING
APPLEBY, NELSON

fabulous cuts & colour

MAPUA 10 MIN > < RICHMOND 10 MIN

p: 022 354 8771 www.thebasin.co.nz

louise@thebasin.co.nz 12 Research Orchard Rd



BIO LOO

THE SPECIALISTS IN COMPOSTING TOILETS

"The call of nature can be kind to Nature"

NO POWER
 NO WATER
 NO CHEMICALS
 NO POLLUTION



ORDER NOW

These toilets are the good looking, sensible answer to human organic waste management. Environmentally friendly, they are economical easy to install and require little maintenance

Toilets are vented so there are no unpleasant odours, no need for toilet cleaners or room deodoriser They meet all required NZ Standards and building codes and are in use by DOC and regional councils Cheaper to purchase and install compared to other systems, right from the start You can leave the system to work for you and in the end will have safe, composted material that can be used in your gardens

Great for you and Better for the planet!



CALL US NOW

Rick on 03 5267-882
Mobile: 021 1029-098
www.biolo.co.nz

CH-773827AA



electrical worx

2017 LTD

We recommend **TOSHIBA**

HEAT PUMPS

Think Toshiba. Think reliability.



- Heat Pump installation on all makes
- SmartVent installation

"FOR ALL YOUR ELECTRICAL NEEDS"

DOMESTIC | INDUSTRIAL | COMMERCIAL

• Servicing • Installation • Maintenance

PROUD TO BE CHOSEN FOR THE ELECTRICAL WORK

PH 03 528 0075

0800 WORK4U

Hon Damien O'Connor

MP for West Coast-Tasman

Minister of Agriculture, Biosecurity and Food Safety
Minister for Rural Communities
Minister of State for Trade and Export Growth





Freephone: 0800 326 436

181 Tainui St, Greymouth
Phone 03 768 7189

208A Palmerston St, Westport
Phone 03 789 5481

234 High St, Motueka
Phone 03 528 8190


/damienoconnormp


@damienoconnormp



Labour

Authorised by Hon Damien O'Connor, Parliament Buildings, Wellington



MyPersonalPlumber

Alex Bint

0800 444 343

027 542 4329

alex@mypersonalplumber.co.nz

www.mypersonalplumber.co.nz

1366 Moutere Highway,
RD1, Upper Moutere, 7173

UV TREATMENT

WATER SOFTENERS & RO UNITS

SAND & NEUTRALISING FILTERS

DOMESTIC/COMMERCIAL PUMPS

STOCK WATER & GRAVITY FEED SUPPLIES

MICRO HYDRO PIPE LINES

WATER RAMS PUMPS

WATER TANK INSTALLATION

water

FILTRATION & PUMPS

Frans van de Loo

0275 281 366

frans.wfp@gmail.com

waterfiltrationpumps@gmail.com

Endurance spraying

All types of weed spraying
Gorse and Brushweed
Control

Commercial • Residential
Forestry Road Spraying
Moss treatment for lawns,
concrete areas and decks.

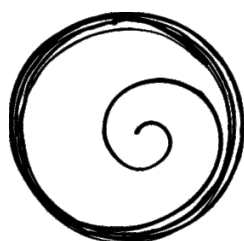


Contact Pete Hughes
021-194 2654 A/H 03 544 2654
Growsafe certified •
Approved Handler



Water Features
Paving
Rock Work
Irrigation
General Landscaping

Michael Hardy
Ph: 021 443 908
A/H: 03 543 2555



Tasman Bay
ESTATES

Natives - Exotics - Grasses - Ferns
Attractive prices - Great Quality

The Nursery
@ 35 Horton Road, Tasman



Open Tue-Fri 8am-4pm; Sat. 10-3pm and by appointment

www.thenursery.nz - Jo: 021 - 122 3056

Mark Carey CONTRACTING LTD

Mark: 021 454 000
Anne: 021 454 731
Phone: (03) 526 7004
Fax: (03) 526 7014
Email: mark.carey@xtra.co.nz
 28 Holdaway Road
 RD2 Upper Moutere Nelson 7175



www.markcareycontracting.co.nz

Horse Cover & Gear Repairs

Horse Cover Washing
 Prompt Service
 Good Rates
 Contact Lawrie

1350 Moutere Highway

Ph: 03 543 2234

021 208 2192

Tile It

*Custom Tiling
 Waterproofing
 Wood Flooring*

Tom

021-0485649

03-5432644

We can help your business grow



PITT & MOORE
 LAWYERS AND NOTARIES PUBLIC

Nelson 03 548 8349
 Richmond 03 543 9090
www.pittandmoore.co.nz
Law & Legal



**TOWN & COUNTRY
 VET**

"...for all creatures great & small..."

**Regular Moutere visits
 discounted mileage
 T&Cs apply**

Ph 544 1200

info@tcvet.co.nz * www.tcvet.co.nz

**25 Edward Street, Wakefield
 35 McGlashen Avenue, Richmond**



24 hour emergency vet

Trade and Professional Services List
Please support our advertisers

What	Who	Contact
Accommodation	Tasman View Accommodation	www.tasmanview.co.nz
Accounting Bookkeeping	Crux Advice & Accounting Ltd	03 539 0645 Mob: 021 154 1333
Acupuncture	Dorothea Tebbenhoff	027 214 6444
Architectural Designer	Leigh Briars	021 215 0946 AH: 03 543 2667
Architectural Designer	Simone Wenk	021 1049 039 AH: 03 540 3282
Composting Toilets	Biolo - Roy	03-526 7882
Builder	Andrew Eggers	027 446 0739 AH: 03 543 2757
Builder	Jason Frater	021 743 497 AH: 03 528 0337
Builder	NTC	021 140 8077
Builder	John Buchanan	027 309 9920
Builder	Alan Cooper	027 435 8101 AH: 03 543 2432
Caravans	Kina Campers	www.kinacampers.co.nz
Chiropractors	Tasman Bay Chiropractic	03 544 4554
Child Care/Early Childhood Education	Country Kids Manager - Nickie	www.countrykids.org.nz
Concrete	Concrete & Metals Tasman Bay	03 528 6344
Contractors	Tasman Earthworks & Construction	021 119 2239
Contractors & Cartage	Wayne, Heine	027 430 2725 AH: 03 543 2788
Electrician	Electrical Worx	0800 967 948
Electrician	Motueka Electrical - Luuk Hermens	027 588 5774 AH: 03 528 4488
Electrician	Sun Electrical - Tony	03 540 2367 Mob: 027 3784 580
Food for Community (Food Bank)	Kai Collective	021 2626 675
Hairdresser	Country Cuts	027 472 8863 AH: 03 543 2297
Hay and baleage production	Mark Carey Contracting	021 454 000 AH: 03 526 7004
Health & Wellbeing	Greenworld Health & Lifestyle	03 528 7262
Horse cover/gear repairs	Lawrie	03 543 2234 Mob: 021 208 2192
Horse therapy	Tasman Equine Therapies	027 452 3906
Kitchens	Moutere Village Kitchens - Steve Farmer	021 0839 1206
Landscaping	Mow-tivated Lawn & Garden	027 599 3304
Landscaping	Hardy Landscapes - Michael Hardy	021 443 908 AH: 03 543 2555
Lawyer Legal Services	Pitt & Moore	03 543 9090
Lawyer Legal Services	The Legal House - Yvonne Watson	03 548 7839
Massage	Fiona Ramsay	027 452 3906
Mechanic	Moutere Motors	03 543 2707
Midwife	Clare Spratt	027 332 4929 AH: 03 526 7764
MP	Damien O'Connor, Labour Party	0800 DAMIEN
Nursery	The Nursery @ 35 Horton Road Tasman	021 122 3056
Nursery	Green Eden - Mischa	027 3788 497
Nursery	Kōtare Liners	021 244 8155
Painter	Vision Painting Tiling & Plastering - Glen	020 4091 7929
Play Group	Karen Barnett	021 252 2657
Plumber	My Personal Plumber - Alex Bint	027 542 4329 AH: 0800 444 343
Property Maintenance	Rod Dohrman	027 433 3048
Property Management	Harcourts - Sian Potts	0272 968 345
Pub/Restaurant	The Moutere Inn	03 543 2759
Real Estate	Bayleys - Matt Galvin	027 768 6288
Real Estate	PGG Wrightson - Doug Smith	027 543 2280
Recreation Centre	Moutere Hills Community Centre	03 543 2516
Scaffolding	Tasman Bay Scaffolding Ltd	021 436 832
Social Club	Beryl or Shirley	03 543 2122/03 543 2438
Spraying	Endurance Spraying - Pete Hughes	021 194 2654
Tiling	Tile it - Tom	021 048 5649 AH: 03 5432644
Vet	Town & Country Vet	03 544 1200
Water	Water Filtration & Pumps Frans	0275 281 366
Water	Complete Water Solutions	03 528 0040
Winery	Gravity Winery Cellar Door	03 543 2817
WOF	Motueka Vehicle Testing Station - no booking required	25 Huffam Street
Youth Group	Tessa Werner	022 101 2276