

SEPTEMBER 2021

# The Grapevine

MOUTERE HILLS COMMUNITY NEWS

## Inside this issue:

- 2 Grapevine Information
- 5 Whenua Iti
- 7 Sarau winter sale
- 8 MDBA Update
- 9 Horoscopes
- 10 Mapua Bowls / Baby Group
- 11 Tasman Art Focus Group
- 13 A rambling country garden
- 15 News from Mahana School
- 18 MH Community Centre
- 20 A couple of good books
- 23 Bio-dynamic learning
- 25 Kai Collective
- 28 Trades & Professional LIST

## Special points of interest:

*A newsletter while lockdown is on!*

*Don't forget our new email address:  
[umograpevine@protonmail.com](mailto:umograpevine@protonmail.com)*

Thank you for reading the Grapevine and for supporting the advertisers.

**FREE DELIVERY**  
Donations appreciated.



# Barrels and Balance

Twenty years ago, Gareth and Alexandra Partington were looking for property in the Moutere. One day while lost and running late, they stopped to ask directions from a farmer fixing his letterbox. It was a fortuitous meeting, surely the right place at the right time - his land was for sale, the couple bought it and Partington wines was born.

The couple, who met at nautical school, were drawn to the countryside, the climate, and the potential for grape growing. They are both qualified in Foreign-going Master, and while Gareth still works at sea to support their life on the land, he is a keen win-

emaker and is qualified in oenology (winemaking) and viticulture.

At the time of the land purchase Alexandra was teaching at the New Zealand School of Fisheries in Nelson, next door to a liquor outlet where they sourced the beer crates to create a nursery - they filled the crates with perlite, planted their cuttings and were underway even before taking possession of their land. The first block in the vineyard was planted in 2002, the second in 2004, and the sextant that was given to Alexandra on completion of her Master's qualification was the one they used to get the angles for the vineyard lines. Their first wine was

*cont. pg3*

## PLACING AN ADVERTISEMENT

Thank you for advertising in the Grapevine—you help us cover the cost of producing and delivering this free community newsletter each month.

### **The deadline for each issue is the 15th of the month.**

Please email your print-ready ad (JPG, PDF, or PNG preferable) to:

**umograpevine@protonmail.com**

### **The following prices apply for advertising:**

- ∞ Births, marriages, deaths and giveaway notices: free
- ∞ Business card size advertisement: \$12
- ∞ 1/4 page advertisement: \$25
- ∞ 1/2 page advertisement: \$50
- ∞ Full page advertisement: \$95 (if space available).

Please deposit payment (and identify it with your name) to our account: NBS 03 1354 0229034 16.

### **Sending us editorial items**

We warmly welcome contributions to the Grapevine from all residents in the Moutere and Tasman regions. You make the newsletter an interesting read! Letters to the editor also welcome! There is no cost to having your articles published but if you are telling the community about a commercial or fundraising venture, we do appreciate a small donation to help us cover our costs—see above for bank details.

Archived coloured copies of the Grapevine are available at [www.mouterehills.org.nz/community/the-grapevine](http://www.mouterehills.org.nz/community/the-grapevine) courtesy of the Moutere Hills Community Centre Staff.

Grapevine circulation is 1400 copies. This issue has been constructed by volunteers: Rachel Field, Edith Bulle, Beverly Sellers, Jenny Leith, Sharon Beuke and Bessie Adie.

### **WE ARE LOOKING FOR VOLUNTEERS FOR ACCOUNTS - PLEASE CONTACT US!**

#### **Disclaimer**

Views expressed in articles in The Grapevine are not necessarily those of The Grapevine team or its editor. While every effort has been made to ensure the accuracy of the information included in this publication, The Grapevine takes no responsibility for errors or omissions or for any consequences of reliance on this information. Publication of advertising material implies no endorsement of either a product or a service.



## Grapevine Says...

Here we are in late winter, bulbs and blossoms bursting, with the most gorgeous blue sky and mild days in between the 'weather bombs'. As we put this issue of The Grapevine together here we are, locked in our separate 'bubbles' again.

This is the second of the Grapevine Editions to be put together by Bessie – congratulations for managing this. A special thank you to Saree from Tasman who compiled the first 5 issues this year – a job well done and thank you so much from the community.

Please think about writing us some articles (or poems) – they can be short or long – and the odd 'letter to the editor' is a fun thing for us to receive. Let us know how we are doing. Who knows what the next days and weeks will bring for all of us – but – stay safe and be kind.

Finally – don't forget, we have a new email address: [umograpevine@protonmail.com](mailto:umograpevine@protonmail.com)



Early Childhood Education & Care

## Cleaner Wanted

Country Kids are looking for a cleaner to make our centre sparkle.

Are you passionate, knowledgeable, and superb at cleaning?

We have a permanent cleaning position available 12 hours per week.

Experience and training an advantage but not essential.

If this sounds like you, please contact me for further details [nickie@countrykids.org.nz](mailto:nickie@countrykids.org.nz)

Country Kids  
035432819  
Moutere Highway

produced in 2007, and they applied for Bio gro certification.

The Partingtons practise biodynamic principles and their wine is organic – the grapes go straight from the vine to the vat for plunging. No processing agent is used, rather Gareth carefully tends prunes, and nurtures the vines to produce quality fruit. Fermentation takes place with natural yeast and the wine goes straight into barrels for a year.

In true boutique winery style all the bottling and labelling is done on the property. There is no cellar door. Rather the wine is sold in some supermarkets, organic stores, and the occasional café.

There have been some tough years, when they have lost the entire crop to the likes of Cyclone Gita, and powdery mildew, but the couple see this as part of living on the land and being con-

nected with nature. Their lives and their leisure time revolve around the seasons.

Woven in with the winemaking is Alexandra's passion for teaching and helping others to achieve their potential. A qualified teacher, she has home-schooled their three children and in recent years has trained in Educational Kinesiology. This little known term refers to the practice of 'supporting the brain and body through movement, balance and rhythm in order to achieve goals.' It's an effective method for helping anxiety, dyslexia, and dyspraxia, but is beneficial for all learners. It involves teaching specific exercises which balance mind and body and connect the pathways between the different sections of the brain, enabling a person to achieve their full potential and to 'be the best they can be.' She teaches this for one day a week at Upper Moutere School, and has a studio on their Wills Road property for pri-

vate clients.

Also resident here are eight horses, which are used for equine facilitated therapy and riding lessons. Alexandra shares their care with her youngest daughter, Yeshe.

And the future? The Partingtons plan to continue to produce top quality wine, to find more time for marketing, and to promote kinesiology in schools and the community – "Movement is the way to facilitate learning."

More barrels, and more balance. ♦



**architecture studio | mapua**

- Sustainability  
- Innovation  
- Craftmanship

**Simone Wenk**  
Reg. Architect (Germany), LBP Design 2 (NZ)  
03 540 3282 / 021 1049 039  
simonewenk@xtra.co.nz

**Shed 4, Mapua Wharf**  
www.architecturemapua.co.nz



**Rod Dohrman**  
**Property Maintenance**  
rod.dohrman@xtra.co.nz



**HANDYMAN PLUS**

Kitchen Removals - Cabin & Shed Kit-Set Construction  
Carpentry - Decks - Gates - Fences - Walls - Painting  
Paving - Concrete Paths - Minor Renovations  
Lawn mowing - Scrub Cutting - Hedge Trimming  
Long term contracts

**Rod Dohrman** **027 433 3048**

**BIO LOO**  
**THE SPECIALISTS IN COMPOSTING TOILETS**

"The call of nature can be kind to Nature"

**NO POWER**  
**NO WATER**  
**NO CHEMICALS**  
**NO POLLUTION**



**ORDER NOW**

These toilets are the good looking, sensible answer to human organic waste management. Environmentally friendly, they are economical easy to install and require little maintenance

Toilets are vented so there are no unpleasant odours, no need for toilet cleaners or room deodoriser They meet all required NZ Standards and building codes and are in use by DOC and regional councils Cheaper to purchase and install compared to other systems, right from the start you can leave the system to work for you and in the end will have safe, composted material that can be used in your gardens

Great for you and Better for the planet!



**BIO LOO**  
COMPOSTING & GREY WATER SYSTEMS

**CALL US NOW** **Rick on 03 5267-882**  
www.bioloo.co.nz **Mobile: 021 1029-098**

CH-773867AA

## LEIGH BRIARS ARCHITECTURE

03 543 2667

021 215 0946

briars@ts.co.nz

RD 2 Upper Moutere

Nelson 7175



## CARAVAN RENTAL

Local business offering great value, good quality, well equipped UK caravans available for short and long term rental. Can be delivered and set up to a campsite location of your choice. Short term holiday rates from \$50 a day. Long term static hire from \$100 pw.

[www.kinacampers.co.nz](http://www.kinacampers.co.nz)

Email: [info@kinacampers.co.nz](mailto:info@kinacampers.co.nz)



## HAIRDRESSING

CALL TO ARRANGE AN APPOINTMENT

(03) 5432297 • 027 472 8863

**EVERY FUEL  
PURCHASE  
EARNS  
REWARDS  
FOR OUR  
LOCAL SCHOOLS**



**We look forward to looking after  
your vehicles this year.  
Please phone and talk to Tim to  
book your vehicle in.**

**mouteremotors**

**Ph 543 2707**

# Our latest adventures...

AUG / SEPT 2021



## Students have the chance to learn & volunteer with Civil Defence, Westport

Students on our Civil Defence Emergency Response Trades Programme drove to Te Tai Poutini/West Coast where they spent the week working with volunteers & learning in situ about the coordinated response to cope with the devastating flooding. Students spent time with the commander of the operation, learning about the operational logistics and how the response had been coordinated, then headed to the volunteer centre to help with the removal of flood damaged household items & carpets from the houses of elderly and vulnerable members of the community. A huge shout out to the amazing volunteers and response team from LandSAR, Civil Defence who were truly inspirational to our students! They have taken away so much from the experience.

## Steve Porteous entertains at Nature Connection Event

Steve Porteous from Human Bushcraft and Wild Living delivered an enlightening day & evening of nature connection here at Whenua Iti to over 60 people who joined us for the seminar. It was great to hear of more tools & ways to develop the natural curiosity and connection to the environment in our tamariki. Thanks to the community members who came along to support the event, including DOC, Tasman Bay Guardians, TDC, Tasman Environmental Trust & EnviroSchools Aotearoa.

## A chance for students to earn NCEA credits outside of the classroom!

It's time for high school students to start thinking about enrolling on programmes for 2022. Whenua Iti Outdoors offer a range of Trades Academy Programmes through schools that run as four one-week blocks across two terms. Each programme offers NCEA around 18-20 credits at either L2 or L3, incorporating hands-on, practical learning opportunities that help build essential skills for future study & employment. They are fully funded by the Ministry of Education through the Trades Academies. Programmes for 2022 include Emergency & Response, Adventure Tourism, Conservation Studies & Manaaki Tāpoi - find out more via your Trades Coordinator at school, or visit [www.wio.org.nz](http://www.wio.org.nz)

## Holiday Programmes available to book in October

Next holidays we're running **Kaitiaki Kids** for 10-12yrs & **Go Wild (in Nature!)** for 7 -10yrs. Both programmes give tamariki 5 days of action, nature immersion & fun outdoor exploration, with the Kaitiaki Kids programme including an overnight adventure - a great stepping stone to our journey programmes offered in the summer. Head to [www.wio.org.nz](http://www.wio.org.nz) to book.

## Why we don't let students take phones on our programmes

Students themselves understand the benefits of taking a break from their phones. In talking with students recently we found out that some have actually reduced the amount of time they spend on their phones after completing one of our Trades Programmes, acknowledging they had been using them too much. One student said that it helped her socially because otherwise she would have hidden behind her phone. It's helped her build confidence in talking with and meeting new people. Another student recognised the benefit in taking a break from your phone - "it's just good for your mental health & wellbeing" - and helped him to better connect to nature and the outdoors while on our programmes. Food for thought!!



Steve Porteous in full flight during the Nature Connection Seminar at Whenua Iti.



Students volunteering in Westport to help clean up after the flooding event

*We'll see you out there!*



[www.wio.org.nz](http://www.wio.org.nz)

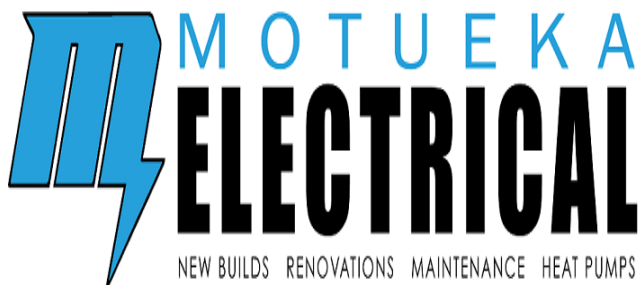
Experiential Learning Inspiring Positive Change



**vision**  
painting-tiling-plastering  
0204 0917 929

**Motueka Vehicle Testing Station**  
**Drive in – WOF – Drive out**  
**25 Huffam street**  
**No Booking Required**  
**Turn into Old Wharf Rd and left into Huffam Street.**



**MOTUEKA ELECTRICAL**  
NEW BUILDS RENOVATIONS MAINTENANCE HEAT PUMPS

**LUUK HERMENS**  
**027 588 5774**  
**03 528 4488**  
[motuekaelectrical@mail.com](mailto:motuekaelectrical@mail.com)

**HEAT PUMP SUPPLIER & ACCREDITED INSTALLER**



**Native  
&  
Tree Lucerne  
Plants  
for Sale**

\$2.50 each  
Approximately 500 mm High  
in 7cm pots  
suitable for reveg. plantings

Contact  
Kōtare Liners  
Upper Moutere  
on  
021 244 8155  
for more information




**MOWTIVATED**  
Lawn & Garden LTD

For all your garden needs:

-  Weeding & Mulching
-  Pruning & Hedge Trimming
-  Push & Ride-on Mowing
-  Brush Cutting
-  Green Waste Removal
-  Lifestyle Blocks

Something you want done not listed above?

**Give us call!**



Michael and Anita are a husband and wife team with a passion for providing excellent quality garden services. We are not afraid of taming wild gardens.



**027 599 3304**

No job too small, just give us a call. Free quotes!

# Sarau winter sale

## at the Moutere Hills Community Centre

A huge thank you to all of you who helped to make our Sarau Winter Sale such a great success - without the reliable volunteer effort that goes in twice a year to these Sarau events, the community would be a great deal poorer for it. This time we raised about \$4,500 (from books and clothing) - well worth it! Tasman School also raised over \$800 to allow their class to attend the WOW performance during their school trip to Wellington, and Maggie and Toby raised almost \$200 for Child Cancer. I do not have the figures for Phoebe from the Upper Moutere School stall but understand they sold all their cup-cakes, and most of their potted plants.



What a joy to have our local buskers – Bella Shand and David Beuke with us throughout the weekend – they really add a special ambience to our Sale time and are loved by everyone present.

We need to acknowledge the effort Sharon Beuke puts into collecting and sorting books throughout the year, then running the book sales both at the Sarau Winter Sale and the summer Sarau Festival. I want to also acknowledge that Anna Haddon stepped up in the last few days of planning and took over running the clothes sale (which we had not intended to have until we arrived and found bags of clothes had been dropped off!). No mean feat to do this as a last minute undertaking, particularly as she also helped coordinate the running of the café. What wonderful soup and baking to be had there – thank you!

One of the major tasks with our bi-annual book sale is collecting and

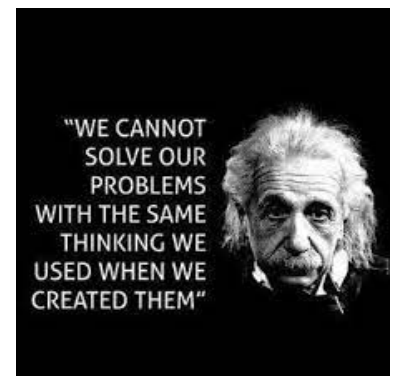
returning trestles from Lower Moutere and Dovedale Community Halls. Thank you to those who take this on – Vicky, Hayden, Ray, Philippa, Tim, Philip, Tom and Mike – no mean feat. After all these years of folk undertaking this exhausting task, Mike Teece has generously donated a further 10 (modern and lighter) trestles to our community so that we can minimise this effort. We thank our neighbouring communities for their willingness to allow us to use their trestles for past events, and hope they too enjoy the benefits of the constant up-grading of facilities in the Moutere.

Finally, I want to thank those of you who came along and supported the sale – buying books and magazines, and enjoying the café fare. You may be interested to know that over the 13 years of the life of the Sarau Trust - the

Volunteers helping to set up (and pack down)

trust has to date distributed just over \$228,000 into this community - as well as recycling thousands of books!

Jenny (for the Sarau Trust)





# MAPUA & DISTRICTS BUSINESS ASSOCIATION

Want to get in touch?  
Email us at:  
[mdba@māpua.co.nz](mailto:mdba@māpua.co.nz)

## September.

Spring has sprung. The days are getting longer and the sun is warming up.  
Let the good times roll.

### New Monthly Networking Event

We are excited to start a monthly relaxed gathering with no agenda other than catching up with each other, sharing information and networking to support each other in business. With Spring upon us what better time to start. **September 1st, Wednesday 5pm—6pm at the Sprig & Fern Mapua.** Thereafter, it will be the first Wednesday of the month at another member's business. We look forward to catching up with you then.

**Our next Lunch & Learn is November 3, 12-1.30pm. Watch this space, when next month we reveal another local inspirational person to share their knowledge.**

If you would like your business profile showcased in our newsletter and on social media we would love to share your story. Or, if you have any great informative websites that you would like to share among the MDBA members that have helped your business contact Kirsten today by email, at [mdba@mapua.co.nz](mailto:mdba@mapua.co.nz). We would love to share these too. Knowledge is power.

**August Lunch & Learn—Mapua.** A big thank you to Frank @ Hybrid Bikes for a great Lunch & Learn session. He was so engaging and open with some great strategies on marketing your business and the challenges he has faced. Knowledge sharing with each other, locally.

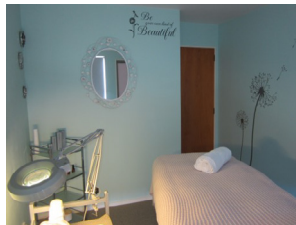


Enquiries about becoming a member of the MDBA, email us on [mdba@mapua.co.nz](mailto:mdba@mapua.co.nz). **Stay Local—Support Local—Shop Local—Eat Local**

### NEED MORE LOCAL MAPS OR DIRECTORIES?

Contact Kirsten via email [mdba@mapua.co.nz](mailto:mdba@mapua.co.nz) and she will organise distribution to you. If you are a member, and need more you can have up to three copies at no charge, then just \$9 a copy for more.

## MEMBER UPDATE—MEMBER UPDATE—MEMBER UPDATE



**KINA BEACH BEAUTY** is run by beauty therapist and celebrant, Suzie Brosnahan. Having spent 15 years as a Tutor of Beauty Therapy at the National School of Aesthetics in Christchurch, Suzie has a wealth of experience and expertise, holding both national and international qualifications, including ITEC and CIDESCO.

Operating from home, Suzie is able to offer a range of beauty treatments to meet both your regular personal grooming needs and your 'treat yourself' extras. So why not allow yourself the luxury of a little pampering, or perhaps, purchase a gift voucher for a loved one or friend.

Visit her website for a full list of treatments and prices. Once you have discovered what she can do for you, phone or email Suzie to arrange a suitable appointment time.

**Opening hours: by appointment. P: 027 378 8277 W: [www.sayyesenterprises.co.nz/kinabeachbeauty](http://www.sayyesenterprises.co.nz/kinabeachbeauty)**

**Supporting Local Businesses since 1992**

<p><b>Capricorn</b> Dec. 22-Jan. 21 Earth • Cardinal • Saturn "The Goat"</p>	<p><b>Taurus</b> Apr. 22-May 21 Earth • Fixed • Venus "The Bull"</p>	<p><b>Virgo</b> Aug. 22-Sep. 21 Earth • Mutable • Mercury "The Virgin"</p>
<p>Venus is in your sun sign, which means that you'll spend many hours this month travelling through some rough and unfamiliar romantic territory. Having just been let out of your bubble, however, you're a bit over-eager. If you see bullet holes in the road signs while you're travelling through this romantic territory, you're going in the wrong direction and need to get the hell out of there!</p>	<p>There comes a time in everyone's life when they begin to take stock. Our thoughts turn to our place in the world, impending mortality and the meaning of life, if indeed there is any. But, you don't waste your time with such things. You stay pretty much firmly fixated on the opposite sex and ways to integrate yourself into the object of your affection's life. Go you! Everybody loves a tryer.</p>	<p>I feel the need to remind you this month, Virgo, that love is not a game for cowards. It's also not fair, not played by any rules, and not a game you can win, so good luck, Romeo. If you're feeling a bit beaten up, take yourself off to see Rosie at Bodytreat in the village. It really is indeed a treat for the body. You're actually going to do okay, but you'll need to drink some soup and light some incense.</p>
<p><b>Aquarius</b> Jan. 22-Feb. 21 Air • Fixed • Uranus "The Water Bearer"</p>	<p><b>Gemini</b> May 22-Jun. 21 Air • Mutable • Mercury "The Twins"</p>	<p><b>Libra</b> Sep. 22-Oct. 21 Air • Cardinal • Venus "The Scales"</p>
<p>You've always dreamed of the many glamorous ways in which being a rhino hunter would change your life. I don't want to burst your bubble, but if you're reading this, you're not hunting rhinos, you're in the Moutere, and you won't find any rhinos there. I'm told there's plenty of wild pigs in the local forests. Maybe you can pretend they're rhinos.</p>	<p>You will be shunned by some of the more traditional members of a local tightly knit book club for your tendency to ruin climactic moments by giving away the ending. You might want to stop doing that, but in the meantime you will have to suffer the shame from the group of self-righteous, soon to be nursing home residents that you call your friends. PS: I hope you went to the Sarau MidWinter Book sale and got yourself some new books! They'll have come in handy in the recent lockdown.</p>	<p>You seem to glow with your own special inner light, so you're either in love, extremely healthy or you have radium in your diet. Remember, despite your talents and capabilities, you are just one person. Stop behaving like you're a 14-piece bluegrass band.</p> <p>Your sign is the scales, the symbol of balance. Flip a coin. It's 50/50 for you really. What am I, psychic?</p>
<p><b>Pisces</b> Feb. 22-Mar. 21 Water • Mutable • Neptune "The Fish"</p>	<p><b>Cancer</b> Jun. 22-Jul. 21 Water • Cardinal • The Moon "The Crab"</p>	<p><b>Scorpio</b> Oct. 22-Nov. 21 Water • Fixed • Pluto "The Scorpion"</p>
<p>You will inspire strong feelings in everyone you meet, particularly the older members of the parole board.</p> <p>If your significant other is a Cancer, they're going to be travelling a lot in September and October. This may tempt you to text your ex out of sheer boredom. Don't do it. This kind of carry on is what got you in front of a parole board in the first place.</p>	<p>You'll run into an old flame at the dairy, which may or may not be a horribly awkward experience.</p> <p>I see you visiting sandy beaches a lot in September and October, perhaps travelling for work and you'll be missing your loved ones ... but not that old flame you just ran into.</p>	<p>You've succumbed to one of the many bugs that have been doing the rounds, and you've been feeling a bit off colour. Your situation has not been helped by the fact that we've been in lockdown and you're missing your coffee and chatting to the lovely ladies in the Old Post Office that serve it to you. Don't worry. Things are on the rise. The weather is turning, the OPO has re-opened and you can use the spare time you've had to finally binge watch <i>Game of Thrones</i>. It's now or never.</p>
<p><b>Aries</b> Mar. 22-Apr. 21 Fire • Cardinal • Mars "The Ram"</p>	<p><b>Leo</b> Jul. 22-Aug. 21 Fire • Fixed • The Sun "The Lion"</p>	<p><b>Sagittarius</b> Nov. 22-Dec. 21 Fire • Mutable • Jupiter "The Archer"</p>
<p>You are a friendly and social creature, with amazing people skills, a magnetic smile, and a dungeon behind a false wall in your home. Of course I'm speaking metaphorically here – mostly. You know that person at the house party who forces everyone to wear a silly hat and form a Conga line and then takes pictures of you looking like a dork and posts it on Facebook? That's probably you.</p>	<p>Every time a philosophical question is answered, 10 more spring up out of the blue to take its place. This is the universe's way of keeping you busy (which is not quite the same as gainfully employed). Don't argue with your boss or you may find yourself reassigned to the role of sewer maintenance engineer, where you will be in charge of a small army of rats and a few dozen giant cockroaches.</p>	<p>You fall wholeheartedly in love, but usually manage to climb back out again without major injury. In the long run, you tend to become somewhat indifferent. This problem is easily handled by relationship therapists who recommend a good dose of fresh onion juice, known for its potent aphrodisiacal effects. You are a good lover (for those who can stand the smell of onions).</p>

# News from Mapua Bowls Club

THE WRITE BIAS

On Monday 16th August we welcomed Kirsten Roedsgaard-Mathieson to the Club to talk to us about the BROOK WAIMĀRAMA SANCTUARY. This is the largest fenced sanctuary for endangered plants and creatures in the South Island and enjoyed by visitors of all ages. This gem is just a few minutes' drive from Nelson CBD. We were very keen to share this opportunity with the community of Māpua so for a gold coin donation, everyone was welcome to join us at Māpua

Bowling Club for the presentation and afternoon tea. It was an enjoyable and successful afternoon.

We are very close to opening again for the 21/22 season. The green is looking good thanks to our new green keepers and members are keen to start playing again. New members are always welcome and there is no need to be daunted; we are a very friendly bunch with a whole variety of skill levels and beginners will be helped and encour-

aged. Bowls are available to borrow and coaching is available if required.

For any information about bowling, coaching or booking the clubhouse and facilities, please contact the secretary, Di Blanchet on 03 540 2627 or check out our website, [sporty.co.nz/māpuabowls](http://sporty.co.nz/māpuabowls)

Sue England

## Simplicity Funerals

Simply respectful. Simply affordable.



**ANNA LOACH**  
Manager & Funeral Director



**ANDREA BABINGTON**  
Funeral Director

**Why Choose Us?**

Simple really ...  
... we excel in honouring,  
celebrating and memorialising  
your loved one together.

**NELSON & TASMAN WIDE, WE'RE PART OF YOUR COMMUNITY**

69 Haven Road, Nelson | Phone 03 539 0066  
[www.simplicity.co.nz](http://www.simplicity.co.nz)

## UPPER MOUTERE Playgroup Baby

From July 28<sup>th</sup> 2021 Upper Moutere Playgroup would like to invite local families to a new baby play session to be held at the Moutere Hills Community Centre.

On **Wednesday mornings between 10 and 12**, our room will be open for families with under twos, to come together, relax and socialise in a supportive and nurturing space. The baby play sessions aim to provide the missing 'village' of support often said to be needed to raise a child, by connecting parents and infants with others in their neighbourhood.

Our facilitator Sophie, has many years' experience working with babies in early childhood settings. She will support families by supervising children's play and by exploring topics around parenting and child development.

Babies will be in a safe and enriching environment where their movement and development can unfold naturally. Baby-friendly age appropriate toys are provided along with morning tea for parents.

Upper Moutere Playgroup believes that healthy families are the foundation for our future and are committed to investing time and money into improving the wellbeing of our local community.

**Sessions are free so please pop by at any time that suits you and bubba ☺**

**For more information: 021 0220 6977 or email: [uppermouterepg@gmail.com](mailto:uppermouterepg@gmail.com)**

# Tasman Art Focus Group (TGFA)

## TASMAN NATIONAL ART AWARDS AND EXHIBITION

Don't miss out! Put these dates into your diary straight away, Saturday 2nd October until Saturday 16th October.

This is a golden opportunity to view, enjoy and possibly purchase works of art that will be on display in Māpua Community Hall for a full two weeks. Come and visit; come back again and bring your friends; you won't be disappointed and you will be supporting artists from all corners of New Zealand. Entry is free along with glossy, souvenir catalogues.

The selectors have chosen 125 paintings for display from 281 entries. Three further judges will select an overall winner, four merit awards, the water colour medium award and the focus prize for best portrait. See if you agree with the judges' decisions but whether you agree or not, you can make your opinion count by voting for your favourite painting in the ever popular 'People's Choice Award'.

All details can be found at [www.tasmannationalartawards.nz](http://www.tasmannationalartawards.nz) or on our Facebook page.

**Official Opening: Saturday 2nd October, 7 p.m.**

**Open daily 9.30 a.m. until 4.30 p.m.**

**Closing: Saturday 16th October**

**We look forward to seeing you**

If you would like to be involved in any way, or need some information, please make contact with team leader, Glenys Forbes on 03 540 3388 or by email [gmforbes@ts.co.nz](mailto:gmforbes@ts.co.nz)

Sue England



Whole Barley  
25 kg bags  
\$20 per bag

Phone 021 454 731 or 03 526 7004



For a  
Free Quote phone  
528 6344

### AFTER ALL THIS RAIN! HOW'S YOUR DRIVEWAY?

Protect your property before winter sets in. Driveway drainage and gravelling - culvert maintenance and clearing - ditch and stream maintenance.

Locally owned & operated supporting our community

PH 03 528 6344 (24HRS) 99 KING EDWARD ST, MOTUEKA [WWW.CONCRETE-METALS.CO.NZ](http://WWW.CONCRETE-METALS.CO.NZ)

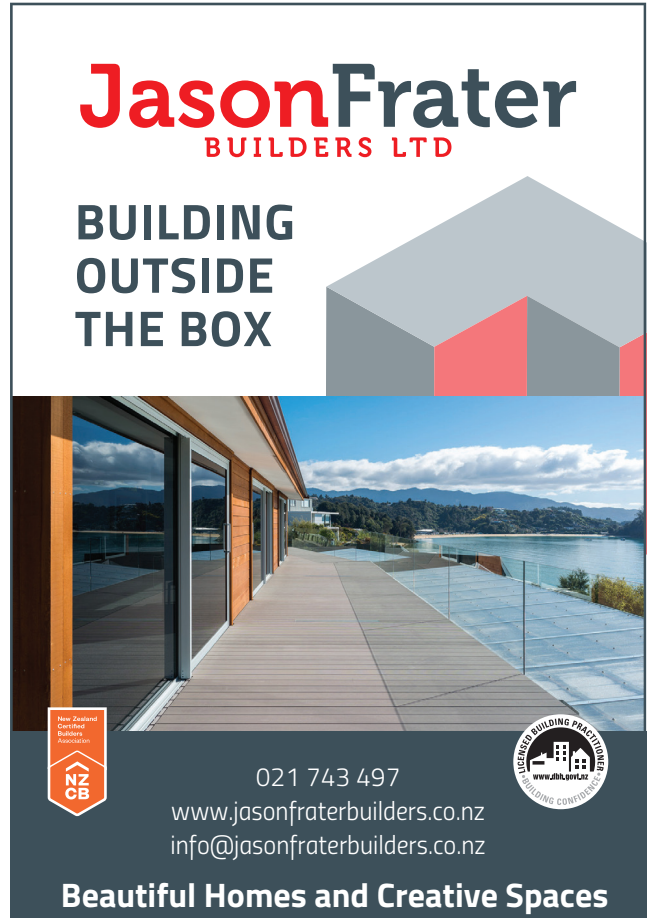


**TBSI** tasman bay  
**SCAFFOLDING LTD**

**THE ONLY  
MOTUEKA BASED  
SCAFFOLDING  
COMPANY**

Give us a call 021 436 832  
or email [tasmanbayscaffolding@gmail.com](mailto:tasmanbayscaffolding@gmail.com)  
today to discuss all your scaffold requirements

*scaffolding hire for all budgets*



**JasonFrater**  
BUILDERS LTD

**BUILDING  
OUTSIDE  
THE BOX**

021 743 497  
[www.jasonfraterbuilders.co.nz](http://www.jasonfraterbuilders.co.nz)  
[info@jasonfraterbuilders.co.nz](mailto:info@jasonfraterbuilders.co.nz)

Beautiful Homes and Creative Spaces

New Zealand  
Certified  
Builder  
Association  
NZ  
CB

LICENSED BUILDING PRACTITIONER  
www.rbh.govt.nz  
BUILDING CONFIDENT



**Green Eden**

Call **Mischa** on 027 3788 497

Bank Acc No. 0207 0401 6059 8000

You can  
also  
catch us  
at the  
Sunday  
Market  
in  
Motueka!

**Manuka - Ake Ake - Flaxes**  
**\$3.00pp - \$ 2.75pp for 20 plus - \$ 2.50pp for 100 plus.**

**Poa Cita (Grasses)**  
**\$2.50pp - \$2.30 for 100 plus plants.**

# A rambling country garden

I recently read a book called “Toast” in which the author, Nigel Slater, recalls his childhood by remembering memorable meals. Similarly, my experiences with gardening reflect aspects of my life at Neudorf during the past 45 years.

I barely knew the difference between a daisy and a rose when, newly-married, we moved into a new house built on a section which had remnants of a former garden: a beautiful copper beech tree, some native trees and a magnolia grandiflora. Less desirable remnants were periwinkle, convolvulus, masses of banana passionfruit and solid clay. Still, I was young and keen and I set to work to establish a native plants garden which would, I thought, be easy-care and fit in with the stand of native trees already on the property.

However, before long, I found myself yearning for more colour, and I frequently ran up to my mother in law’s place next door, asking if I could pick some flowers from her extensive cottage garden. With the arrival of child number one, to be followed by three more, I became an at-home mum and thus came the opportunity to develop a cottage garden myself.

During the next ten years or so I immersed myself in the world of plants, reading, visiting gardens and swapping

plants with friends. I developed a deep love of old roses and was a frequent visitor to Tasman Bay Roses, revelling in the evocative names - Souvenir de la Mal-

maison, Jean Ducher, - and the glorious fragrances. I also discovered the “best of both worlds” in David Austin’s English roses, a combination of the fragrance and beauty of old roses with the repeat flowering of modern roses.

I liked the idea of being able to pick flowers all year around: thus camellias and hellebores were planted to provide colour during the less floriferous winter months. I should mention here that both of these plants grew in abundance in the garden of Pearl, my mother-in-law, who was both a talented gardener and a floral artist. She was my mentor and inspiration in gardening, and was always willing to give me plants when I had some gaps to fill in.

Over the years, the garden has been very important to me in various ways: a place to reflect, de-stress and day-dream. (It has also been a lot of slog at times!) When the children were young, and I was housebound, I used to seize spare moments to go outside to pull up a few weeds, or plan the next project.



Now that I am getting older I will have more time to spend in the garden, but, ironically perhaps, the next step is to cut back on the hard graft involved in a large perennial garden. I’m going full-circle and am planting more natives, hebes in particular, and am appreciating their hardiness and beauty more than when I was younger. Having sufficient water has always been an issue in the dry summers and is another reason for planting more natives as they cope better with drought than most perennials do.

My garden is large, rambling and is in no way a “designer” garden. However, I have always delighted in the beauty of individual plants, the fragrance of roses and the excitement of watching things grow. Being outside in the cool of the morning or evening in summer continues to be one of life’s quiet pleasures and I trust that I will be able to enjoy this for many years to come.

Sharon Beuke



## Introducing Doug Smith

I have been living and working locally since 2008. Use my experience, honesty, integrity and work ethic to deliver you the highest value for your number one asset.

Competitive commission and marketing tailor made to your individual requirements.

I welcome your call for a no obligation appraisal and any advice I can give you.

**Professionalism  
Knowledge  
Competitive Pricing**

**SOLD**



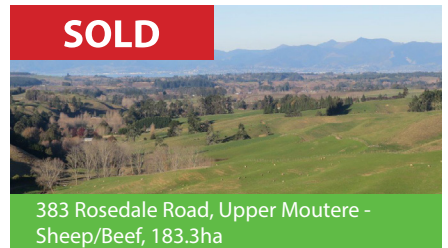
69 Best Road, Upper Moutere -  
Lifestyle, 18.5ha

**SOLD**



50 Rosedale Road, Upper Moutere -  
Lifestyle, 12.2ha

**SOLD**



383 Rosedale Road, Upper Moutere -  
Sheep/Beef, 183.3ha

**SOLD**



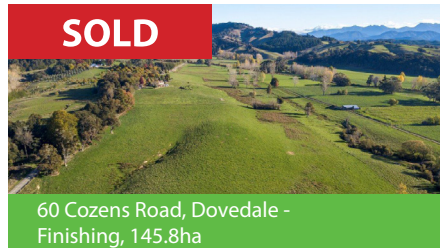
153 Strachan Road, Ngatimoti -  
Grazing, 65.2ha

**SOLD**



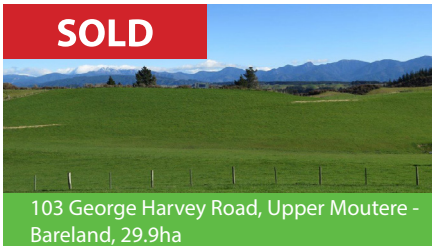
1596 Moutere Highway, Upper Moutere -  
Lifestyle, 10.8ha

**SOLD**



60 Cozens Road, Dovedale -  
Finishing, 145.8ha

**SOLD**



103 George Harvey Road, Upper Moutere -  
Bareland, 29.9ha

**SOLD**



40 School road, Riwaka -  
Lifestyle, 5.13ha

**SOLD**



220 Deepdale Road, Upper Moutere -  
Sheep/Beef, 215.8ha

**SOLD**



120 Palmer Road, Brightwater -  
Bareland, 3.22ha

**SOLD**



159 Carlyon Road, Mahana -  
Lifestyle, 4ha

**SOLD**



505 Thorpe Orinoco Road, Ngatimoti -  
Sheep/Beef, 24.1ha

**Doug Smith**

M 027 543 2280  
douglasjcsmith  
@pggwrightson.co.nz

# News from Mahana School



Mahana School was successful in an application for 'Creatives in Schools' funding from the Ministry of Education which provided the unique opportunity to have an artist come in and work with students through the process of creating a visual, in this case a mural, for an idea. The concept was to create a visual representation of 'who we are' and incorporate the school's four values or 'Mahanatanga' that form the acronym WARM, which is most apt as Mahana itself translates as warmth.

## THE SCHOOL'S FOUR VALUES ARE:

Whanaungatanga - (Relationships - Community - Working Together) -

We include others, We work as a team, We are respectful.

Ako - (Learning - Communication - Creativity - Problem Solving) - We take risks and aren't afraid of mistakes, We don't give up, We are positive, Karawhiua! We give it heaps!

Rangatiratanga - (Leadership - Perseverance - Resilience) - We are leaders, We are role models, We can do it!

Manaakitanga - (Kindness - Respect - Caring for Each Other and the Environment) - We encourage others, We are kind, We listen.

Students investigated each value working in whānau groups, of mixed ages, to determine what each of these looked, felt, and sounded like at Mahana School. These descriptions were then summarised and students also created graphics to represent the variety of elements involved. Artist Sean Duffell was delighted to be asked to work with the school using his unique spray paint style of creativity. Sean has painted murals throughout New Zealand and the world. He used the ideas from the student voice and listened to feedback to work through several drafts coming to the final result that now adorns the school's Ngākaupai classroom's outside wall.

Included in the design are the sun emitting the warmth of the community and whanaungatanga. The poutama tukutuku steps depict Ako and Rangatiratanga associated with achievement, the effort required to reach new heights and resilience. The hands help to show Manaakitanga - respect and care. The local area is visible with Tu Ao Wharepapa as the maunga, or mountain and the use of blue for the moana and awa, (sea and river). You may be able to spot an acorn representative of the massive oak tree which in autumn creates a whole play-time economy of trade, property and rent amongst students.

In the first picture artist Sean Duffell is the recipient of waiata by the children as a way of giving thanks for his mahi - just a part of the school's values! ♦








**CALL US TODAY**  
**027 385 5998**

Tasman Earthworks & Construction operate throughout the greater Nelson Tasman region providing a wide range of excavation and construction services. We offer a personal and tailored service to meet your needs.

Contact us today for an estimate for your next project.

• [info@tasmanearthworks.co.nz](mailto:info@tasmanearthworks.co.nz)  
 • [www.tasmanearthworks.co.nz](http://www.tasmanearthworks.co.nz)

 /tasmanearthworks  /tasmanearthworks

**A great job at a GREAT Price!**



**SUN ELECTRICAL**  
**Phone: 03 540 2367**  
[www.sunelectrical.co.nz](http://www.sunelectrical.co.nz)  
 Tony: 027 3784 580  
 Troy: 022 080 4751

124 Aranui Rd  
 Mapua, Nelson 7005  
[sunelectrical@xtra.co.nz](mailto:sunelectrical@xtra.co.nz)

Domestic  
 Industrial  
 Commercial  
 Caravan WOFs  
 Solar Power Systems

**Our highly skilled and experienced electricians can provide solutions to meet your electrical needs**

- New house/shed wiring
- Rewiring
- Alterations and repairs
- Hot water elements and thermostats
- Energy saving solutions
- Power bill forensics
- Garden and outside lighting
- Solar power systems
- Caravan electrical warrants
- Sewerage and pumping systems
- Test and tag
- Switchboard upgrades and replacements
- Oven and store repairs
- Urgent breakdowns
- Industrial wiring and maintenance

[www.sunelectrical.co.nz](http://www.sunelectrical.co.nz)

**YOUR ACCOMMODATION**  
 Located on the Great Taste Trail



**TASMAN VIEW**  
*Accommodation*



[www.tasmanview.co.nz](http://www.tasmanview.co.nz)

  
 Official Partner

**CRUX**  
 ADVICE & ACCOUNTING

**Nathan Silcock**  
 Director

M 021 154 1333  
 P 03 539 0645  
 E [nathan@cruxadvice.co.nz](mailto:nathan@cruxadvice.co.nz)  
 PO Box 494  
 Nelson 7040





**Adventure CANVAS**  
**Motueka/Tasman**

**Auto/Marine Upholstery & Outdoor Shade Solutions.**

Caleb Hill- 18 years industry experience.  
 0273620048  
[acanvasltd@gmail.com](mailto:acanvasltd@gmail.com)  
 2529 Moutere Highway, Lower Moutere 7175.



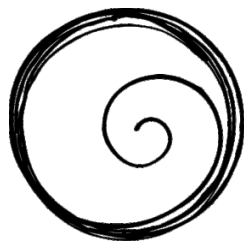
**Ph 027 435 8101**  
 A/H 03 543 2432

**Alan Cooper Builder**

Qualified Tradesman for all Aspects of Carpentry







*Tasman Bay*  
ESTATES

Natives - Exotics - Grasses - Ferns  
Attractive prices - Great Quality

*The Nursery*

*@ 35 Horton Road, Tasman*



Open Tue-Fri 8am-4pm; Sat. 10-3pm and by appointment

[www.thenursery.nz](http://www.thenursery.nz) - Jo: 021 - 122 3056

## STONESCAPE LANDSCAPING YARD "YOUR LOCAL LANDSCAPING SPECIALIST"



### NEW TO LANDSCAPING YARD 3 TONNE DELIVERY TRUCK

BARK - 10 SCOOPS      GRAVEL - 3-4 SCOOPS  
COMPOST - 8 SCOOPS      SAND - 4 SCOOPS  
TOPSOIL - 5 SCOOPS      SHELL - 4 SCOOPS

\$40 Delivery Central Motueka Area  
Elsewhere normal charges apply



### PEASTRAW SMALL BALES ONLY \$16 EACH



### RAILWAY SLEEPERS - Length 2.1m ONLY \$60 EACH

**OPEN MONDAY TO FRIDAY 8AM-5PM  
AND SATURDAY MORNINGS 9AM-12PM**

**STONESCAPE**  
Garden Supplies

**CONCRETE & METALS TASMAN BAY LTD**  
**NEW LOCATION** 99 King Edwards St, Motueka  
(03) 528 6344 info@stonescape.co.nz



**CONCRETE  
& METALS**  
TASMAN BAY LTD

# MOUTERE HILLS COMMUNITY CENTRE



**Dear Community**

*It has been great to see the Community Centre so busy this past month! As well as our regular activities we also have a few new opportunities coming up so check things out below. Bookings are also starting to come in for Christmas Functions so if you would like to hold your work Christmas Social here then please feel free to give us a call to book a date and discuss your requirements.*

*Kind Regards Katrina, Adele, Keith, Cindus*

## TAKE OUR HISTORY INTO THE FUTURE!

Thanks to everyone who attended our first community history afternoon in June, it was wonderful to see so many people there.

Our next meeting will be:

**Thursday 16th September  
1pm**



**There will be a talk on the history of hop growing in the Moutere by retired local grower and German descendant, Peter Bensemann.**

Afternoon tea to follow the talk. All welcome!

## NOTICE OF ANNUAL GENERAL MEETING

**Thursday 30th September  
7pm**

**At Moutere Hills Community Centre**

**Are you interested in becoming a Board Member?**

*Board Member nominees must be a resident in the wider Moutere Hills area. Nominations close on Monday 27th September at 3pm. Board Member nomination forms are available from the MHCC Secretary, Mark Simpson, phone 027 3095227 or email mark.simpson3368@xtra.co.nz. Nomination forms can also be obtained from the MHCC office at Moutere Hills Community Centre, phone 5432516.*



**DAY CHANGE**

## Adults/ Youth Futsal

Come along and have a go at Adult/Youth Indoor Futsal. All welcome!  
No bookings required, just turn up!



**Thursdays 5:30 - 7:00pm  
\$3 per person**



**Phone: 543 2516**

**Email: [enquiries@mouterehills.org.nz](mailto:enquiries@mouterehills.org.nz)**

**Website: [www.mouterehills.org.nz](http://www.mouterehills.org.nz)**



# MOUTERE HILLS COMMUNITY CENTRE

## COMMUNITY FITNESS CENTRE



# SHRED FOR SUMMER

## BACK AGAIN IN 2021!

**8-Week Training Programme To Get You Ready For Summer!**

### Programme Includes:

- Pre and post programme body composition scans, detailing more than 40 internal measurements
- Personalized exercise programme
- 2 x group fitness sessions per week; 1 x fitness class and 1 x gym session
- Regular support and advice from the programme instructor and Fitness Centre Manager, Adele
- Weekly fitness tips, nutrition advice and challenges

Only \$180 per person, or \$300 for a couple.

Registrations essential and spaces are strictly limited. Contact Adele for more information, or to register: [adele@mouterehills.org.nz](mailto:adele@mouterehills.org.nz) or 0275118826.

*Runs from 19 October- 9 December. Group fitness sessions times are Tuesdays and Thursdays 7:00-8:00pm. Scans will be run on Saturday 16 October and Saturday 11 December. Fitness Centre membership is in addition to programme costs. Fitness Centre membership is not compulsory but is highly recommended to ensure you get full programme benefits.*



Seeking expressions of interest for a Mums and Bubs exercise class, to be held one late morning per week.

Please get in touch with Adele on 0275118826 or [adele@mouterehills.org.nz](mailto:adele@mouterehills.org.nz) if this is something you would like to attend.

**ONLY \$35!**

**HKM Body Scans are back on Saturday 16 October**

**Book it into your diary now!**

Time slots will open up at the beginning of October, so keep an eye out on our Facebook page and website for more details on how to book. Spaces are strictly limited!

See how healthy you are on the inside with this non-invasive scan giving over 40 key body measurements.

#hkm



**Phone: 543 2516**

**Email: [enquiries@mouterehills.org.nz](mailto:enquiries@mouterehills.org.nz)**

**Website: [www.mouterehills.org.nz](http://www.mouterehills.org.nz)**



# A couple of good books

A couple of good books ... if, like me, you are interested in New Zealand history, and in particular the post-Cook, pre-Treaty period.

I found both of these books; 'Banks' by Grantlee Kieza, and 'Kauri: Witness to a Nation's History' by Joanna Orwin, to be extremely well-written and engaging accounts of aspects of massive interest in the early history of European involvement in Aotearoa/New Zealand.

Both are written by accomplished historical writers and this gives them credibility and authority as to their use of sources and accuracy, and enable the reader to gain insight into the context of the times. By no means are these recent revisionism.

Joseph Banks was an incredibly wealthy Englishman blessed with enormous energy for scientific exploration of the natural world. He travelled with James Cook to the Pacific and gathered biological samples . . . plant and animal life in huge numbers for scientific study, classification and research. His enthusiasm led to him sponsoring and taking part in

many voyages of discovery around the world, as well as to New Zealand at a time when the horizons were rapidly expanding, and Darwin's theories were becoming accepted.

Banks' interactions with Maori, and his botanical discoveries and observations furnish us with a huge boost to our knowledge of pre-European New Zealand.

Likewise, though confined to a narrower field of study, 'Kauri' covers the remarkable story of this notable tree, in New Zealand, from pre-European times, through to the devastating harvest for timber by the early European arrivals.

The huge forests from the Waikato northwards, predominantly in Northland, were mercilessly felled to meet the demand for timber in New Zealand, Australia and North America, including spars for the British Royal Navy sailing ships. Maori were involved of course in the ownership and sale of forests, and many European immigrants began their life in this land harvesting timber and gum for insatiable markets. The author includes much of the human history of Northland also and again this gives us useful context through the period of immigrant settlement, musket wars and later land wars. She finally offers some information for the belated protection of what little remains of this mighty forest specimen.

I thoroughly recommend both books ... TDC library has them.

*The Midnight Rambler*

## Moutere Volunteer Fire Brigade

Callouts for the month of June.

4th Person fallen off motorbike, Dovedale

12th Reported Bush fire, was a permitted burn, Moutere highway

19th Car vs truck, assist Mapua, State highway 60 / Maisey Road

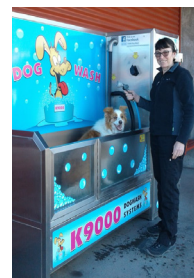
26th Chimney fire, Neudorf Road

27th Smell of smoke, galeo estate area, nothing found

27th House fire, Pretty Bridge Valley, Belgrove, turned back to station before arrival.

## TOWN & COUNTRY VET

RICHMOND



*Dog Wash K\$9000*

**Coin and note operated**

**Open 24 hours**

**7 days**

# CWS

**CompleteWaterSolutions**

**COME AND SEE US  
FOR A GREAT DEAL**



Your local suppliers of  
**TANKS, PUMPS &  
UV FILTERING SYSTEMS**



24 Huffam Street Motueka

Ph: 528 0040

[www.cwsnz.co.nz](http://www.cwsnz.co.nz)



**NTC**  
Nelson & Tasman  
Construction

**ALL BUILDING WORK**

LARGE OR SMALL  
NEW BUILDS • SHEDS • REPAIRS  
ALTERATIONS  
DESIGN & PLANNING SERVICE  
DIGGER & DRIVER HIRE  
EXPERIENCED LOCAL  
LBP BUILDERS  
0211 408077  
[ntconstruction@xtra.co.nz](mailto:ntconstruction@xtra.co.nz)  
[www.nelsonandtasman.co.nz](http://www.nelsonandtasman.co.nz)



**Heine's**  
**Cartage and Contractors**

We have trucks, excavators, a dozer, a grader, and the expertise to do all your cartage, drainage, building site & foundation, roading, and subdivision work.



40 years of local knowledge  
and experience in the transport and contracting industry

Phone Wayne on 03 5432 788  
027 430 2725  
Or call in at our workshop and office at  
1455 Moutere Highway  
(by the firestation)  
UPPER MOUTERE




**Matt Galvin**  
Your local agent

Your **Property** my **Priority**

Thinking about selling? Would you like to know how I can help? Call me today

**Matt Galvin** 027 768 6288 [matt.galvin@bayleys.co.nz](mailto:matt.galvin@bayleys.co.nz)

### **MOUTERE MASSAGE**

**FIONA RAMSAY**

**QUALIFIED AND PROFESSIONAL**

\*\*\*\*\*

**\*SPORTS \*DEEP TISSUE \*INJURY REPAIR**

**\*FOOT REFLEXOLOGY \*BOWEN THERAPY**

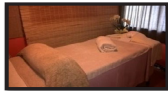
\*\*\*\*\*

**20 WILSON ROAD**

**UPPER MOUTERE**

**PH/TXT 027 452 3906**

**MON, TUES, WED & FRI**



### **LOCAL MIDWIFE CLARE SPRATT**

Ring Clare for friendly professional maternity care and advice.



I offer full 24 hr maternity care from conception through to 6 weeks post natal, home/hospital and water births, birthing pool available, natural remedies, free pregnancy testing, breastfeeding support and much more.

T: 03 526 7764

M: 0273324929

E: [midwifeclarespratt@me.com](mailto:midwifeclarespratt@me.com)

We now have three chiropractors available



Corrian



Bryony



Hamish

Keeping you in the game since 2002



**Tasman Bay Chiropractic**

Monday-Saturday

03 544 4554

64 Oxford St Richmond

[tasmanbaychiropractic.co.nz](http://tasmanbaychiropractic.co.nz) Find us on



**JOHN BUCHANAN**  
027 3099920

## **QUALIFIED BUILDER**

New homes, renovations, decks, fencing.  
Give me a call to discuss your project.

Licensed Building Practitioner



**green world health  
& Lifestyle**

Sole Supplier of  
**Dr. Hauschka**  
Products  
in Motueka.



Open 7 Days



177 High Street, Motueka

Ph: 03 528 7262

E: [greenworldhealthandlifestyle@gmail.com](mailto:greenworldhealthandlifestyle@gmail.com)



**Dorothea  
Tebbenhoff**  
*Acupuncture*



**Licensed Acupuncturist**  
MAcNZ, Acc Provider

**Re-located to Motropolis building**

31 Wallace St, Motueka

**027 214 6444**

[www.tasmanacupuncture.co.nz](http://www.tasmanacupuncture.co.nz)

# Learning Bio-dynamic agriculture practices

## - together in this region



Bio-dynamics... Could it be a serious option for my own agricultural or gardening practices? Could this approach help to improve soil fertility and plant health? How does bio-dynamic agriculture compare to organics or permaculture or to conventional approaches of growing food on a larger scale? What is the philosophy and are there any scientific studies? Are there connections to Maori ways of growing food?

These are some of the questions that might come to mind, when the concept of bio-dynamic agriculture is considered. The Steiner Farm School in Motueka is in the process of opening a room for shared learning on the topic of bio-dynamic agriculture. The farm, which is in its very beginning stages of converting from conventional to bio-dynamic practices, is aiming to become a learning hub for the community, introducing bio-dynamic

principles like compost preparations, cow manure pits, studying and understanding the bio-dynamic planting calendar as an orientation tool for the conscious choice of when to plant and manage care for different nutritional plants.

Monthly Zoom sessions will be held in cooperation with the NZ bio-dynamic Association. These sessions will also include practical workshops at the farm school or other locations in the region. Mutual support of individual farm projects which are sharing the same principles of bio-dynamics will thus be enhanced by drawing on local expertise and experience.

People interested in participating in this new project should contact the LandCare Group at the Motueka Steiner Farm School (edithbulle@gmail.com)

**andrew eggers**  
builders limited



Call us for a quote or estimate on  
your next building project

0274 460 739



## MOUNTAIN VIEW

Building & Joinery  
Maintenance Services

No job too small

**Ph: 027 5520063**

- Carpentry
- Joinery
- Residential/Commercial
- General Maintenance
- Flat pack kitchen/furniture assembly & installation services
- Gib repairs & plastering
- DIY assistance
- Building Act/Code & Schedule 1 Guidance

*National Diploma in Building Control Surveying*



We recommend **TOSHIBA**  
HEAT PUMPS  
Think Toshiba. Think reliability.



- Heat Pump installation on all makes
- SmartVent installation

**"FOR ALL YOUR  
ELECTRICAL NEEDS"**

**DOMESTIC | INDUSTRIAL | COMMERCIAL**

**• Servicing • Installation • Maintenance**

**PROUD TO BE CHOSEN FOR  
THE ELECTRICAL WORK**

**PH 03 528 0075**

**0800 WORK4U**

## Hon Damien O'Connor

**MP for West Coast-Tasman**

Minister of Agriculture, Biosecurity and Food Safety  
Minister for Rural Communities  
Minister of State for Trade and Export Growth



**Freephone: 0800 326 436**

**181 Tainui St, Greymouth**  
Phone 03 768 7189

**208A Palmerston St, Westport**  
Phone 03 789 5481

**234 High St, Motueka**  
Phone 03 528 8190

 /damienoconnormp

 @damienoconnormp



**Labour**

Authorised by Hon Damien O'Connor, Parliament Buildings, Wellington



**MyPersonalPlumber**

**Alex Bint**  
0800 444 343

027 542 4329  
alex@mypersonalplumber.co.nz  
www.mypersonalplumber.co.nz

1366 Moutere Highway,  
RD1, Upper Moutere, 7173

UV TREATMENT

WATER SOFTENERS & RO UNITS

SAND & NEUTRALISING FILTERS

DOMESTIC/COMMERCIAL PUMPS

STOCK WATER  
& GRAVITY FEED SUPPLIES

MICRO HYDRO PIPE LINES

WATER RAMS PUMPS

WATER TANK INSTALLATION

**water**  
**FILTRATION  
& PUMPS**

**Frans van de Loo**  
**0275 281 366**

frans.wfp@gmail.com  
waterfiltrationpumps@gmail.com



August 2021

THE MOUTERE  
*Kai*  
Collective



The Moutere Kai Collective have had a busy Winter. Lots of our meals have been taken down to support families in Westport as they deal with flooding. Thanks go to Katrina, MHCC manager and Melissa from the Big Bake Up for their efforts getting meals prepped to go west (photos below).

We've also been trialling a new recipe – a delicious creamy Chicken Pot Pie with a crispy roast potato top, Yum! We're giving it a few tweaks and will begin rolling it out regularly in the coming weeks.

We'd like to thank the staff at MHCC again for their ongoing support of our work. They've helped us find more storage inside the Centre and continue to support people as they come to collect meals from the foyer freezer. And we'd like to express our gratitude to all the new members we've had join us this year – it's great to have new energy!



For those new to the Kai Collective concept, we're a group of locals who get together every 6 weeks, or so, to produce nourishing meals for our community. We then encourage locals to come and collect the meals and gift them on to their neighbour, friend, or a family member who may be in need of a little support. As always, our frozen meals can be collected, by anyone, from the public-access freezer located in the foyer of the Moutere Hills Community Centre. We also supply the Motueka Maternity Unit and various other community out-reach locations with our frozen meals. We're entirely volunteer co-ordinated and run.

### How do I use the Kai Collective?

1. Identify someone in need of love and support
2. Collect a meal or two from MHCC (also available from Country Kids, the Church Hall or the Mapua Kai Collective have meals at Mapua school, Delicious Store & the Mapua Hall.
3. Deliver the meal to your friend and make the world a little kinder...

### How can I support the Kai Collective?

- By gifting our meals to those in need out into our community.
- Donate to help support our food costs: NBS 03-1354-0423793-00
- Volunteer, by joining our Facebook group 'The Moutere Kai Collective' or emailing Anna – haddonanna@gmail.com

### **Endurance spraying**

**All types of weed spraying  
Gorse and Brushweed  
Control**

**Commercial • Residential  
Forestry Road Spraying  
Moss treatment for lawns,  
concrete areas and decks.**



**Contact Pete Hughes  
021-194 2654 A/H 03 544 2654  
Growsafe certified •  
Approved Handler**



**Water Features  
Paving  
Rock Work  
Irrigation  
General Landscaping**

**Michael Hardy  
Ph: 021 443 908  
A/H: 03 543 2555**

### **Looking for certainty re legal fees?**

Wary of the timecard being clicked for every phone call,  
every email, every single quick question? We offer a quality professional service at  
fixed fees to avoid the nasty surprises.

See us for all your Residential and Commercial Conveyancing, Refinancing,  
Debt Consolidation, Wills and Enduring Powers of Attorney, Relationship Property, Trusts.

## **T H E   L E G A L   H O U S E**

**TLH Law Limited**

**Josh Boyce** L.L.B. Lawyer | **Robert Styles** L.L.B. Lawyer  
**Pauline Scott** DipLegalExec.NZLS | **Yvonne Watson** DipLegalExec.NZLS

***Now at*** 33 Trafalgar Street, Nelson  
PO Box 332, Nelson 7040  
**P** 03 548 7839  
**F** 03 548 7842  
[www.thelegalhouse.co.nz](http://www.thelegalhouse.co.nz)

## Mark Carey CONTRACTING LTD

**Mark:** 021 454 000  
**Anne:** 021 454 731  
**Phone:** (03) 526 7004  
**Fax:** (03) 526 7014  
**Email:** mark.carey@xtra.co.nz  
 28 Holdaway Road  
 RD2 Upper Moutere Nelson 7175



[www.markcareycontracting.co.nz](http://www.markcareycontracting.co.nz)

### Horse Cover & Gear Repairs

Horse Cover Washing  
 Prompt Service  
 Good Rates  
 Contact Lawrie  
 1350 Moutere Highway

**Ph: 03 543 2234**

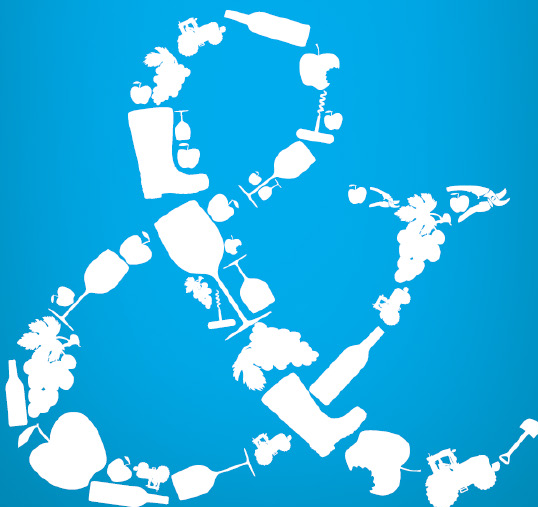
**021 208 2192**

## Tile It

*Custom Tiling  
 Waterproofing  
 Wood Flooring*

**Tom**  
**021-0485649**  
**03-5432644**

## We can help your business grow



**PITT & MOORE**  
 LAWYERS AND NOTARIES PUBLIC

Nelson 03 548 8349  
 Richmond 03 543 9090  
[www.pittandmoore.co.nz](http://www.pittandmoore.co.nz)  
 Law2Link



TOWN & COUNTRY

# VET

*"...for all creatures great & small..."*

**Regular Moutere visits  
 discounted mileage  
 T&Cs apply**

**Ph 544 1200**

[info@tcvet.co.nz](mailto:info@tcvet.co.nz) \* [www.tcvet.co.nz](http://www.tcvet.co.nz)

**25 Edward Street, Wakefield  
 35 McGlashen Avenue, Richmond**



**24 hour emergency vet**

## Trade and Professional Services List

*Please support our advertisers*

What	Who	Contact
Accommodation	Tasman View Accommodation	<a href="http://www.tasmanview.co.nz">www.tasmanview.co.nz</a>
Accounting Bookkeeping	Crux Advice & Accounting Ltd	03 539 0645 Mob: 021 154 1333
Acupuncture	Dorothea Tebbenhoff	027 214 6444
Architectural Designer	Leigh Briars	021 215 0946 AH: 03 543 2667
Architectural Designer	Simone Wenk	021 1049 039 AH: 03 540 3282
Composting Toilets	Biolo - Roy	03-526 7882
Builder	Andrew Eggers	027 446 0739 AH: 03 543 2757
Builder	Jason Frater	021 743 497 AH: 03 528 0337
Builder	NTC	021 140 8077
Builder	John Buchanan	027 309 9920
Builder	Alan Cooper	027 435 8101 AH: 03 543 2432
Caravans	Kina Campers	<a href="http://www.kinacampers.co.nz">www.kinacampers.co.nz</a>
Chiropractors	Tasman Bay Chiropractic	03 544 4554
Child Care/Early Childhood Education	Country Kids Manager - Nickie	<a href="http://www.countrykids.org.nz">www.countrykids.org.nz</a>
Concrete	Concrete & Metals Tasman Bay	03 528 6344
Contractors	Tasman Earthworks & Construction	021 119 2239
Contractors & Cartage	Wayne, Heine	027 430 2725 AH: 03 543 2788
Electrician	Electrical Worx	0800 967 948
Electrician	Motueka Electrical - Luuk Hermens	027 588 5774 AH: 03 528 4488
Electrician	Sun Electrical - Tony	03 540 2367 Mob: 027 3784 580
Food for Community (Food Bank)	Kai Collective	021 2626 675
Hairdresser	Country Cuts	027 472 8863 AH: 03 543 2297
Hay and baleage production	Mark Carey Contracting	021 454 000 AH: 03 526 7004
Health & Wellbeing	Greenworld Health & Lifestyle	03 528 7262
Horse cover/gear repairs	Lawrie	03 543 2234 Mob: 021 208 2192
Horse therapy	Tasman Equine Therapies	027 452 3906
Kitchens	Moutere Village Kitchens - Steve Farmer	021 0839 1206
Landscaping	Mow-tivated Lawn & Garden	027 599 3304
Landscaping	Hardy Landscapes - Michael Hardy	021 443 908 AH: 03 543 2555
Lawyer Legal Services	Pitt & Moore	03 543 9090
Lawyer Legal Services	The Legal House - Yvonne Watson	03 548 7839
Massage	Fiona Ramsay	027 452 3906
Mechanic	Moutere Motors	03 543 2707
Midwife	Clare Spratt	027 332 4929 AH: 03 526 7764
MP	Damien O'Connor, Labour Party	0800 DAMIEN
Nursery	The Nursery @ 35 Horton Road Tasman	021 122 3056
Nursery	Green Eden - Mischa	027 3788 497
Nursery	Kōtare Liners	021 244 8155
Painter	Vision Painting Tiling & Plastering - Glen	020 4091 7929
Play Group	Karen Barnett	021 252 2657
Plumber	My Personal Plumber - Alex Bint	027 542 4329 AH: 0800 444 343
Property Maintenance	Rod Dohrman	027 433 3048
Property Management	Harcourts - Sian Potts	0272 968 345
Pub/Restaurant	The Moutere Inn	03 543 2759
Real Estate	Bayleys - Matt Galvin	027 768 6288
Real Estate	PGG Wrightson - Doug Smith	027 543 2280
Recreation Centre	Moutere Hills Community Centre	03 543 2516
Scaffolding	Tasman Bay Scaffolding Ltd	021 436 832
Social Club	Beryl or Shirley	03 543 2122/03 543 2438
Spraying	Endurance Spraying - Pete Hughes	021 194 2654
Tiling	Tile it - Tom	021 048 5649 AH: 03 5432644
Vet	Town & Country Vet	03 544 1200
Water	Water Filtration & Pumps Frans	0275 281 366
Water	Complete Water Solutions	03 528 0040
Winery	Gravity Winery Cellar Door	03 543 2817
WOF	Motueka Vehicle Testing Station - no booking required	25 Huffam Street
Youth Group	Tessa Werner	022 101 2276