

The Grapevine

MOUTERE HILLS COMMUNITY NEWS

Inside this issue:

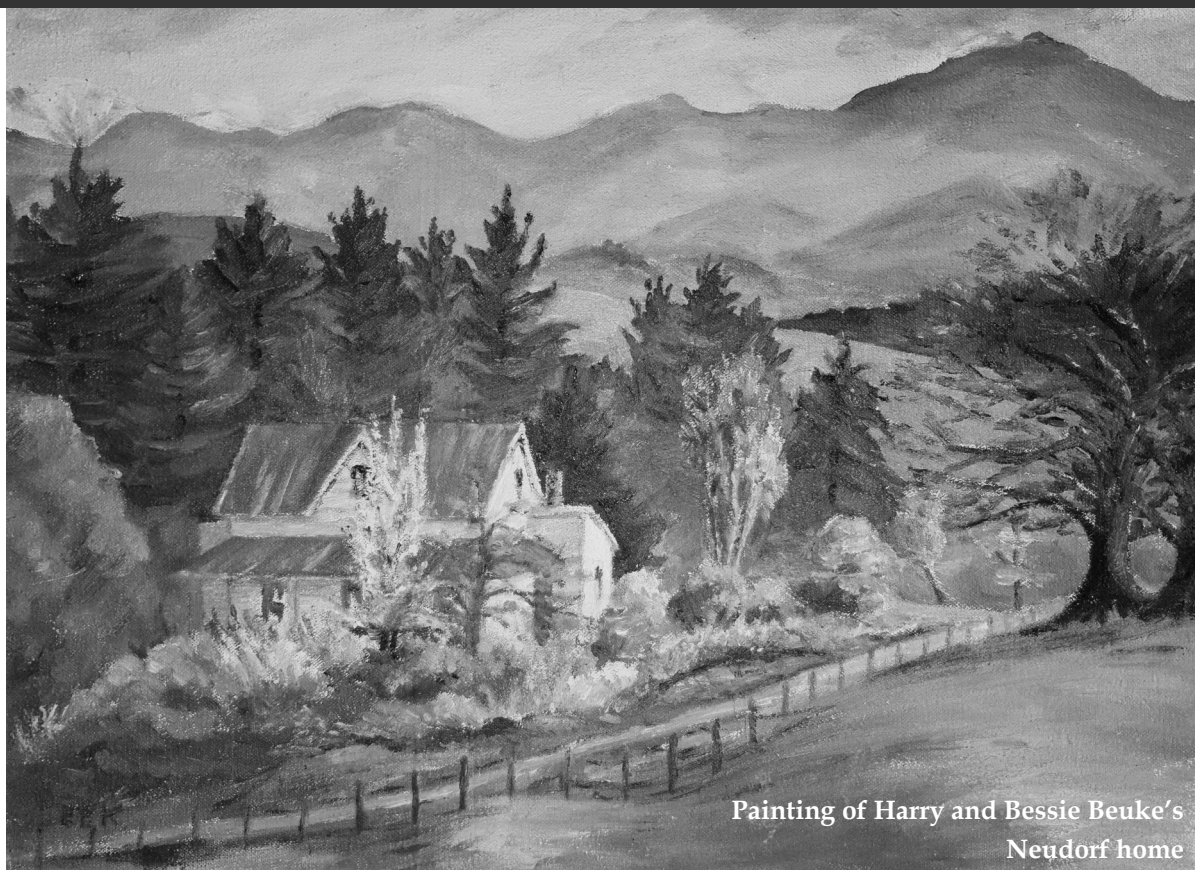
Administration	2
Horoscopes	4
Making of A Garden	9
TGC Vet	10
School Contribution	11
Whenua iti	13
Steiner School	14
Mapua Bowls	16
MHCC	17-18
Trades & Professional List	28

*Thank you for reading
the Grapevine and for
supporting the
advertisers*

We are looking for
volunteers to assist
with accounts and
layout. If you can
help please contact
umograpevine@hotmail.com



HOW TIMES CHANGE



Painting of Harry and Bessie Beuke's
Neudorf home

There was a gathering at Keith Best's place on a recent Saturday, looking at what has happened with the flow of water through the Moutere Catchment over the last 150 plus years and what can be done to ensure detrimental effects are reduced and, where possible reversed. There were lots of people there, most of whom have moved to the valley from far away places. Amongst the attendees were a small number who have not only lived in the Moutere all (or in my case most) of their lives, but whose ancestors arrived here way back in the first years of settlement. Interestingly some were descended from people who originally came from England, like Keith, others whose ancestors were from Germany. Both my parents were half English, half German, reflecting the mix in nationalities by the mid 20th Century.

My maternal grandfather was a Teece, of the family that lived in Harakeke – from England. My paternal grandmother, Bessie, spent the early years of her teaching career by travelling to Golden Bay from Nelson on the Lady Barkly to teach at Puramahoi, later boarded with the Beukes, and taught at Neudorf School. Romance blossomed, so of course she had to find somewhere else to board until she and Harry Beuke wed.

Had you been at the Moutere Catchment meeting you would have learned how the settlers' enthusiasm for clearing and draining the land has caused problems with our rivers and streams over the ensuing years. What else has changed? I suspect change was gradual for the first half of that time, but what about later?

When I first arrived at Neudorf as a 14-day old back in 1948 I had got there along the gravelled Neudorf Road and was welcomed to a house that had an outside toilet, no electricity and rudimentary laundry facilities. My mother had not long had a car, bought with the proceeds from her touring the district by bicycle teaching piano. My father who earned a shilling (10 cents) a week working for his father on the farm, hadn't quite saved enough for one yet.

Most of what we ate was produced on the farm or from the vegetable garden. If a sheep was killed there was mutton, if a beast was killed there was beef, and so on. Some of the meat was cured so there was more choice about when it was eaten. A fridge and finally a freezer came a long time after we got electricity. Groceries were delivered by the Upper Moutere Store which, like all grocery stores in those days, stocked just the basics rather than the 50,000 plus products one gets to choose from in any supermarket these days.

PLACING AN ADVERTISEMENT

Thank you for advertising in the Grapevine—you help us cover the cost of producing and delivering this free community newsletter each month.

The deadline for each issue is the 15th of the month.

Please email your print-ready ad (jpg or png preferable) to—umograpevine@hotmail.com. **The following prices apply for advertising:**

- ∞ Births, marriages, deaths and giveaway notices: free
- ∞ Business card size advertisement: \$12
- ∞ 1/4 page advertisement: \$25
- ∞ 1/2 page advertisement: \$50
- ∞ Full page advertisement: \$95 (if space available).

Please deposit payment (and identify it with your name) to our account: NBS 03 1354 0229034 16.

Sending us editorial items

We warmly welcome editorial contributions to the Grapevine from all residents in the Moutere and Tasman regions. You make the newsletter an interesting read!

There is no cost to having your articles published but if you are telling the community about a commercial or fundraising venture, we do appreciate a small donation to help us cover our costs—see above for bank details.

Archived coloured copies of the Grapevine are available at www.mouterehills.org.nz/community/the-grapevine courtesy of the Moutere Hills Community Centre Staff.

Grapevine circulation is 1300 copies. This issue has been constructed by volunteers: Miriam Lynch, Rachel Field, Edith Bulle, Beverly Sellers, Jenny Leith, Sharon Beuke, Saree Dickson and Annabel Duncan.

WE ARE LOOKING FOR VOLUNTEERS FOR ACCOUNTS AND LAYOUT — PLEASE CONTACT US!

Disclaimer

Views expressed in articles in The Grapevine are not necessarily those of The Grapevine team or its editor. While every effort has been made to ensure the accuracy of the information included in this publication, The Grapevine takes no responsibility for errors or omissions or for any consequences of reliance on this information. Publication of advertising material implies no endorsement of either a product or a service.



Call us for a quote or estimate on your next building project

0274 460 739



PGG Wrightson Real Estate

Doug Smith
Licence No. 20010862
Rural/Lifestyle Real Estate Consultant



douglasjcsmith@pggwrightson.co.nz
M 027 543 2280
H 03 543 2280
F 03 541 0903

PGG Wrightson Real Estate Ltd
Real Estate Agent, REAA 2008
8A Gladstone Road, Richmond 7040
PO Box 3008, Richmond, Nelson
New Zealand
www.pggwre.co.nz

Helping grow the country



CompleteWaterSolutions

**COME AND SEE US
FOR A GREAT DEAL**

Your local suppliers of
**TANKS, PUMPS &
UV FILTERING SYSTEMS**



24 Huffam Street Motueka

Ph: 528 0040

www.cwsnz.co.nz

From Page 1 ...

Everybody knew everybody else. Very few new people came to the valley to live, and very few people moved away.

My sister, brother and I walked, or biked to Neudorf School, just up the hill from the MacMillan Gallery. The MacMillan house incidentally is on the site of the first Neudorf School which later became the Neudorf Hall - the current house was built using some of the original building, and retaining its shape. We were lucky to have some fantastic teachers. We spent many happy summer afternoons trooping down to the Neudorf creek, damming the stream so we could swim, and building changing rooms using old sacks between the trees. I doubt the school produced any great swimmers!

Twice a year we had a check-up from the dental nurse who was based at Upper Moutere School for a couple of weeks. We would have to go to Upper Moutere on the bus and attend school there for the whole day because cars were only used for essential transport.

Away from school we spent many hours wandering far and wide exploring, making tracks, building huts and annoying the wildlife in the streams. If we did our fair share of chores and were home for meals, no one gave a thought to where we were.

The month of March was all about hop picking. There was always an influx of people into the area to provide labour. Hops were picked into bins, earning the princely sum of one shilling a bushel (35 litres). Everyone worked really hard at these times.

Tobacco was also grown and harvested. Romance between some of the visiting workers and locals resulted in some visitors changing their minds about how long they stayed!

Things only started to change in the late 1960's. Hop picking machines meant a reduction in labour requirements. It was also about this time that people started commuting to work in Motueka, Richmond and Nelson. Travelling out of the area for recreation became more and more prevalent too. In my early years we played cards, table tennis and indoor bowls in the Neudorf Hall. The surroundings don't make much difference when you're playing cards but the hall had seen better days, with the uneven floor making table tennis and indoor bowls rather challenging.

From the seventies onwards more and more people have moved into the area. They have brought entrepreneurial ideas and contribute to the community in exciting ways.

The traffic on the road continues to grow and grow, even though the Moutere Highway is no longer the major route from Motueka to Nelson.

Ro Giblin (Aka Rosemary Beuke)

Disclaimer: My memory might not be totally accurate!



BAYLEYS

VINING REALTY GROUP LTD, BA YLEYS, LICENSED UNDER THE REAA ACT 2008


Matt Galvin

Your local agent

Your **Property** my **Priority**

Thinking about selling? Would you like to know how I can help? Call me today

Matt Galvin

027 768 6288

matt.galvin@bayleys.co.nz

<p>Capricorn Dec. 22-Jan. 21 Earth • Cardinal • Saturn "The Goat"</p> <p>Capricorn, I know you are the first sign on this list, but don't get all cocky; it doesn't make you any better than the others! My sincere apologies for not having written any horoscopes last month. I heard there might be a proposal of marriage coming your way, and I didn't want to ruin the surprise.</p>	<p>Taurus Apr. 22-May 21 Earth • Fixed • Venus "The Bull"</p> <p>You are a regal monster. You always think you have done everything right. In your mind, you are absolutely slaying it, and everyone adores you. Who am I to interrupt your grandiose fantasy? There's good publicity strutting your way this month. The likes are gonna roll in, and you are going to take over the world. I guess the month of June wishes you the best, but I'm not really sure how that's possible.</p>	<p>Virgo Aug. 22-Sep. 21 Earth • Mutable • Mercury "The Virgin"</p> <p>You are always patient; however, be mindful of your resentful side, which will come out when Mars is in Libra. Your social media feed will be filled with flawless projects done by smiling families, and your desire for perfection will make you want to hurl your glue gun out the window. Stay calm, Virgo; their house is a mess too and they probably have a drinking problem.</p>
<p>Aquarius Jan. 22-Feb. 21 Air • Fixed • Uranus "The Water Bearer"</p> <p>Your sign is supposed to have some family issues this month, so you should probably hide away from your family during June, or maybe even for the rest of this year. You're like an angry baby, and this month is going to bring some much needed calm and relaxation into your life. Also, don't wear the colour orange out in public. You'll find out why.</p>	<p>Gemini May 22-Jun. 21 Air • Mutable • Mercury "The Twins"</p> <p>Planetary strength is equally distributed between the upper and lower halves of the Moutere, whatever that means. Gemini, you are the Duchess of Fickle, and that's not gonna change. June is sure to bring a lot of drama, but that's just how you like it. The more drama you have swirling around your head, the happier you are, and the more opportunities people have to marvel at your sociopathic talent for letting things slide right off your back.</p>	<p>Libra Sep. 22-Oct. 21 Air • Cardinal • Venus "The Scales"</p> <p>You've been working hard to keep everything running smoothly, and now it's time to put your feet up and and take some me time. Big and small decisions are coming your indecisive way. Good luck with that and keep your ex on speed dial – just in case. We all know it's hard to let go.</p>
<p>Pisces Feb. 22-Mar. 21 Water • Mutable • Neptune "The Fish"</p> <p>You are always up for an adventure, and this month's adventure will prove one for the ages. Watch out for your quick temper in late June, when Venus squares off with Saturn and Pluto. There will be screaming, crying and a little vomit. Some of it may actually come from you, and some from a child. Try not to throw anything at your partner.</p>	<p>Cancer Jun. 22-Jul. 21 Water • Cardinal • The Moon "The Crab"</p> <p>Ah, little crabby Cancer, when you're done weeping into your fish and chips from the Moutere Takeaways for the 15th night in a row, you're going to need a drink. You'll be feeling a little emotional this month, but what else is new? Luckily, June is gonna give you a break from the feels and inject some much-needed pragmatism into your life. Selena Gomez, Khloe Kardashian and Lionel Messi are all Cancers, so make what you will of that.</p>	<p>Scorpio Oct. 22-Nov. 21 Water • Fixed • Pluto "The Scorpion"</p> <p>We all know Scorpios like to keep their ducks in a row, which is why it's important for you to mix things up in June. The stars have spoken and they want you to know you are a virgin who can't drive and it's time to colour outside the lines and unbutton that top button. Isn't Scorpio the name of one of the mermaids in The Little Mermaid? I don't know. Just keep swimming; you'll figure it out.</p>
<p>Aries Mar. 22-Apr. 21 Fire • Cardinal • Mars "The Ram"</p> <p>Aries, what are we going to do with you?! You have been doing everything perfectly this month. You're the mum to beat, your fridge is always full of organic fruit and we can tell that your ass has been glued to that exercise bike at the Moutere Hills Community Centre. You speak several languages and everyone invites you to their impromptu drinks. However, the stars are saying you don't like change, so I suggest you lock yourself in a room and never come out.</p>	<p>Leo Jul. 22-Aug. 21 Fire • Fixed • The Sun "The Lion"</p> <p>A lot of the messages I've been getting from the cosmos have been about how different signs need to unleash what's inside of them, but for you, it's actually about folding up your freak flag. I'm not saying you've done anything wrong, but you had some moments last month where your wig fell off and you didn't know the lyrics of the songs that you sang aloud to on the radio in the car.</p>	<p>Sagittarius Nov. 22-Dec. 21 Fire • Mutable • Jupiter "The Archer"</p> <p>I can't believe you actually read horoscopes. Can't you see that I'm totally unqualified to be talking about horoscopes? Your sign is half man, half horse, so giddy up! According to my research, you are supposed to have great health this month, but the Coronavirus is a thing so...</p>

TBSI tasman bay
SCAFFOLDING LTD

**THE ONLY
MOTUEKA BASED
SCAFFOLDING
COMPANY**

Give us a call 021 436 832
or email tasmanbayscaffolding@gmail.com
today to discuss all your scaffold requirements

scaffolding hire for all budgets

Jason Frater
BUILDERS LTD

**BUILDING
OUTSIDE
THE BOX**

021 743 497
www.jasonfraterbuilders.co.nz
info@jasonfraterbuilders.co.nz

Beautiful Homes and Creative Spaces

**EVERY FUEL
PURCHASE
EARNS
REWARDS
FOR OUR
LOCAL SCHOOLS**

**FUEL FOR
SCHOOLS**
School Sponsorship Programme



**We look forward to looking after
your vehicles this year.
Please phone and talk to Tim to
book your vehicle in.**

mouteremotors

Ph 543 2707

NEW BUSINESS --- NEW BUSINESS --- NEW BUSINESS



Tasman Bay
ESTATES

Natives - Exotics - Grasses - Ferns
Attractive prices - Great Quality

The Nursery

@ 35 Horton Road, Tasman



Open Tue-Fri 8am-4pm; Sat. 10-3pm and by appointment

www.thenursery.nz - Jo: 021 - 122 3056



BROOK STREET LOUNGE
SUSTAINABLE CLOTHING

RECYCLED QUALITY LABELLED CLOTHING FOR MEN AND WOMEN

LOCATED CORNER ARANUI ROAD AND RUBY BAY TURN OFF (OPPOSITE MAPUA SCHOOL)



UPDATES

AUTUMN/WINTER STOCK NOW IN. MERINO and WOOLLEN items in store NOW. WARM DESIGNER LABELLED JACKETS AT OP SHOP PRICES. SCARVES, DENIM, LONG SLEEVED TOPS, WARM PANTS.

HOURS – Saturday and Sunday, 11-3. DESIGNERS – NZ and INTERNATIONAL

SPECIALS – Come check out our \$10 rack – moving fast.

SIZE RANGE – We have size 6 to XXXL.

SUPPORT LOCAL – We recommend Mapua Fruit and Vege shop next to us especially for their fresh bread, LOCAL PRODUCTS and COFFEE from Java Hut and Lovina.

HEAVENS TO BETSY EARRINGS - Now called Forever April; Come see new season stock.

PRIVATE FUNCTIONS – If you are looking to have a get together with friends and family, we have private shopping nights - book out the shop. Bring your wine and nibbles and spend time having the store to try on clothes. No charge. Great for 60th birthdays, hens' nights, baby showers, 21st birthdays.

CONTACT US - facebook/Instagram or message 027.322.3306 EMAIL – brookstlounge@gmail.com



BSL IS LOOKING FOR A NEW OWNER OPERATOR. COME SEE US TO DISCUSS OR EMAIL



CRUX

ADVICE & ACCOUNTING

Nathan Silcock
DirectorM 021 154 1333
P 03 539 0645
E nathan@cruxadvice.co.nz
PO Box 494
Nelson 7040


CLEAN A WINDOWS
Window Cleaning Company

Brian @ Cleanawindows.
Email.
cleanawindowsplease@gmail.com

0210 225 1221

CLEAN A WINDOWS
"Get your windows cleaned with Clean A Windows"
If no answer, leave a message and I'll call back. (Police vetted)



Whole Barley
25 kg bags
\$20 per bag

SALE

Phone 021 454 731 or 03 526 7004

ANNUAL SARAU WINTER SALE

31 July – 1 August 2021

We have begun planning for the Annual Sarau Winter Sale. So far we (The Sarau Community Trust) have the usual **Book Sale** and the pop-up **café** sorted, but there is an opportunity for another community group, or school to fundraise alongside us. You could sell: carpets, antiques, toys, fabrics, trees or art works – whatever we agree is suitable. Just get in touch and let's talk about it.

Enquiries: jenny@saraufestival.co.nz or

The Sarau Community Trust is delighted to announce that in 2021 the following Moutere Hills organisations have applied for and received grants exceeding a total of \$24,000.

- The Moutere Youth Trust
- Country Kids
- The Empowerment Trust
- The Moutere Kai Collective
- The Valley Stags Rugby team
- St Pauls Historical panel fund
- Moutere Hills Community Centre
- Tamaha Scouts
- Whenua Iti Trust
- Upper Moutere School
- Upper Moutere Playgroup

The Trustees wish to congratulate these groups on the fantastic community involvement and support they provide in our area.

We also congratulate most sincerely the team of new co-ordinators who put together, and ran the hugely successful 2021 Sarau Festival – you are amazing!

The Trust raises funds for distribution through the Sarau Festival, The Sarau Winter Sale and from running quiz nights at the Sprig & Fern in Mapua – next date 4 August 2021 – note your diary and book a table.

In total the Sarau Community Trust have made \$231,000 available to the community since 2009, recycled thousands of books, helped to bring folk from out of the district here to use the MHCC and (hopefully), provided a lot of fun along the way.

Sarau
**COMMUNITY
TRUST**

PINE CONES FOR SALE:**School camp fundraiser:** - \$5/bag

Contact Upper Moutere School – 5432798

A Brief History of Moutere Hills Cemetery

During the early years of the settlement the first interments took place on the settlers own properties but when provision was made to establish rural cemeteries the community looked to find a site. A public meeting was called to elect a Board of Management and the first meeting was held at Sarau in March 1864. The duties were shared between two British and two German residents with Mr William Cook office holder. When the Lutheran cemetery was established the two German settlers withdrew. Mr Cook requested a piece of Reserve land and one and a half acres was cleared ready at the site.



A meeting was called in June 1865 to establish the rules of management. George Harvey undertook most of the development work while his brother in law William Best designed the final site and did the ploughing and grassing down.

The first person interred was 28 year old James Joss on 18 July 1865 and later that year the elderly Alexander Drummond although no stone marks this grave it was near the original entrance.

In 1876 the Moutere Roads Board asked the Cemetery Board for permission to take an 'S' bend around the steep part of the cemetery block as the original road went straight to the main road and was too steep for the horse drawn traffic. This was agreed to and in 2020 the road was altered once more through neighbouring land.

The early plan drawn by Thomas Brunner showed an area of 3 acres however a later one dated 1st September 1869 signed by John Blackett indicated a 28 acre block. The news totally overwhelmed the Trustees who didn't have the money to administer this. The correspondence on this matter didn't close until 1892. A letter came from the Department of Lands and Survey which stated "the whole section, 28 acres was reserved by the Superintendent of Nelson for a cemetery on 3rd November, 1854 and whenever trustees are appointed it was for the whole section. Certificates of Title for cemetery reserves are never issued – the provisions of Sec 8 of the Cemeteries Act 1882 being considered sufficient. In 1895 clarification was sought on the status of trustees and they were informed they held office under Sec 6 of the Cemeteries Act 1882 until removed by the Governor. Their term was not limited to seven years as they had thought. To this day several generations of the original families have served and continue to do so.

A year or so after Rabbit Island was planted in pines the cemetery board planted 4 acres and this and subsequent crops have largely funded the development work over the years.

Since the beginning we have had 32 trustees appointed. All work has been voluntary however now we contract out the lawn mowing.

The Moutere Hills Cemetery has been reserved for the people of this district and for people that already have a close family member interred there. We have endeavoured over many years to maintain our rural atmosphere and to make our cemetery a pleasant and peaceful spot to visit.

*An opportunity now exists for the appointment of one or two Trustees.
If you are interested please contact Eileen at westfylde@xtra.co.nz*

Eileen Harvey Thawley

The Annual Sarau Book Fair is coming up. Keep those donations rolling in.

Phone or Text Sharon on 027 4328145 to arrange drop off.



The Making of a Garden

High above the Moutere Highway is a very special private garden developed from bare farmland in the last 25 years. Louise and David Allardice were living and working in Nepal when they made the decision to establish a base back in New Zealand. Since that time Louise has mostly lived here with the children, David coming and going from their Asian businesses. David had done a season apple picking in the district as a teenager which drew them here, and then they saw their piece of land.

Both Louise and David were talented photographers and Louise a painter and craftswoman and they knew that what they wanted to do was to create an English type garden taking their skills in composition and form from the canvas to the farm. But, unlike most stately English gardens which are on the flat, the Allardices were on steepish rolling hillside. They therefore tried to recreate the “bumps and lumps”, and the “ins and outs” of our West Coast using trees and shrubs, later adding roses, perennials and bulbs to give the depth, colour, texture and year-round interest.

Whenever David returned from Nepal or Thailand he would be immediately out with hammer and timber creating arches, walkways and structures while Louise planted in swathes of 7, 9, or 15 plants to create the symmetry and depth which exists today. As the years have passed there has been much learning that only the Moutere clays can teach – the importance of soil preparation and deep ripping to allow trees to easily penetrate with their rooting systems. The importance of water, and the importance of accepting that the trees are long-term and most of the perennials and roses need replacing every 10 years or so, if you want to keep the structure and form alive. Even more importantly Louise remembers how when she came first from Nepal she wanted jacaranda, bougainvillea and frangipani – as she watched these struggle she came to realise the importance of planting the right plant in the right place. The Moutere was not suited to these exotics and they lost many of the plants they had bought in the early years.

This is a garden which is constantly being developed, changed and enlarged. Always taking into account the site, the microclimate in each area of the hill, and now her extensive knowledge of what will grow where. Years of propagating rhodos, box hedging, roses and lavenders are gone – it is time to figure out how to help this teenage garden grow into an old garden.

In 2000 they established a kitchen garden, but by 2021 Louise had realised that this is best converted to citrus and bulb beds. Sixteen years ago they created a stunning square cherry walk with 38 Shimidsu Sakura flowering cherry trees and a carefully disciplined underplanting.

First, out come the white jonquils, followed by the yellow daffodils, then the blue irises, the white roses and finally, the stunning pink cherry blossom. Louise admits to a ‘control freak’ tendency even when it comes to the garden!

With David’s untimely death in 2013 came the development of a new section of garden which is his special place – looking out across the gully to Mt Arthur surrounded by stunning autumn coloured trees. Louise has continued to travel, and as her children have grown up and left home (now both in Europe), so too has her life changed. She spent 2 years in Melbourne while Georgia attended a ballet school there, meaning time with her aging parents as they entered their 80s. Those parents remain active gardeners and hugely knowledgeable – particularly about rose growing. Louise’s Mother has received a national (Australian) award for her contribution to the renowned Morwell Rose gardens.

With an unscheduled return to the Moutere the day before lock-down last year Louise and her children (plus son Jessie’s partner) began a ‘lock-down garden’. This is in a clay filled hollow where once they had tried to create a lake (but it leaked). Using a Japanese theme, together they built boardwalks, and ponds to create an amphitheatre feeling – now planted and waiting for appropriate sculptures. Her children are now in Europe once more

And what of 2021? Louise has taken on a 5,000 tree planting project with the Moutere Catchment Restoration





Now that we're back into pig hunting season it seems a good time for a refresher on pig dog care and wound care....

Nutrition

Food is not just brown stuff in and brown stuff out! Your hunting dogs are athletes so they should be fed accordingly, ideally a top quality working dog formula. These foods provide;

- high quality animal protein for muscle function and repair
- high quality fats to enhance endurance and maintain condition
- easily digested carbs for fast and sustained energy release
- antioxidants to maintain a strong immune system
- omega-3 fatty acids for healthy skin and pads
- glucosamine/chondroitin for joints and cartilage

You might be thinking so what? **But why wouldn't you want your dogs to have more stamina, heal faster from injuries and have more resistance to infection and disease?** Nowadays we can do so much better than the unbalanced nutrition provided by raw meat. We also have to be aware of food-borne disease such as Go-Slow which is seen in dogs that eat wild pork.

Worming

Regular 3-monthly worming of all dogs with a broad-spectrum wormer is essential to avoid buildup of intestinal worms. Roundworms are very common but hookworm and whipworm can cause intestinal bleeding and anaemia as well as digestive problems and weight loss – none of which are good for highly active hunting dogs.

Bedding/insulation

Give your dogs insulation against cold nights and they'll use less energy keeping warm, have more energy for tomorrow's hunt and recover faster.

How do I manage wounds?

The key to getting your dog back up and running well is **getting wounds clean and allowing drainage**. Pigrips are messy contaminated traumatic injuries. Be ready to help your dog if it's injured.

- Have some basic first aid equipment – carry it when hunting or at least have it in your truck: [bandage](#), [tape](#), [saline](#), [swabs](#), [scissors](#), [tweezers](#), [forceps](#), [iodine](#) – [NOT wound powder!](#) tampons/pads to put in/on wounds, a clean towel, clean plastic bags
- Control bleeding with pressure

- Remove any obvious vegetation, use tweezers or forceps if necessary.
- Remove any obvious contamination with saline or water. Lots of water is good but make sure it drains out of the wound not into the dog!
- Prevent more contamination (especially if there's a wound over the chest or abdomen) using bandage or a clean towel.
- Try to prevent more damage, bleeding and pain by limiting movement – use bandage, carry your dog or drive to the dog if possible/necessary.

If you need more help:

Phone us ASAP – the fresher the wound, the easier/cheaper it is to repair (however sometimes we delay surgery if dogs are dehydrated or have lost a lot of blood)

If there is a wound over the chest or abdomen, we strongly recommend getting it checked by us. Penetration into the chest cavity or abdomen can be fatal, even weeks later, due to untreated infection or diaphragmatic tears

Always remember the wound you see on the outside rarely reflects the amount of damage on the inside. If in doubt, always bring them into the clinic.

Don't put wound powder or antibiotic sprays on wounds before bringing them in.

And:

Wounds heal better when a dog is rested, fed well and kept warm and dry.

Rest your dog as long as possible – damaged muscles and tendons can take weeks to return to full strength. Going out too early can delay and even prevent return to full fitness.

Only remove surgical drains if you have been shown how to – we spend a lot of time looking for lost drains inside dogs!







HIGH ST. OFFICES

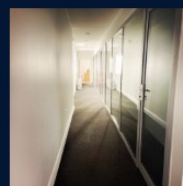
117 High Street, Motueka

Modern hot desking professional space & meeting room.



PAY AS YOU GO OR BECOME A MEMBER

HOTDESKING WORKSPACES - FLEXIBLE TERM - FIXED COST - SERVICES INCLUDED



Whether you'll be with us for a day or two, or plan to set up shop for the long term, we've got the perfect plan for you. All our plans include fibre internet, kitchen, security, bike storage and more.

FOR MORE INFORMATION CALL 03 526 7808, Email: hello@highstreetoffices.co.nz or visit our website at www.highstreetoffices.co.nz.

Made with PosterMyWall.com



MAPUA & DISTRICTS BUSINESS ASSOCIATION

Want to get in touch?
Email us at:
mdba@māpua.co.nz

June. Winter has arrived. We hope you are still busy and for those of you who's hours lessen over the winter months, hopefully you can have some well deserved time out, or catch a breath to work on your business.

Our May Lunch & Learn had a relevant topic to a lot of local business owners, who found it informative and a good winter project to work on.

The AGM was a great success with Gavin Larsen talking up a storm. The selection of some exciting new committee members, which we will be profiling in our July newsletter. As always it was a chance to network and see new and familiar faces. With our membership growing, it is so good to see locals supporting locals, building a strong community for all businesses to grow and prosper in.

If you haven't received your copy of the new directory email us or, if you require extra copies they are just \$9 each mdba@māpua.co.nz



Enquiries about becoming a member of the MDBA, email us on mdba@māpua.co.nz. **Stay Local—Support Local—Shop Local—Eat Local**

**Our next Lunch & Learn is booked. August 4 2021, 12-1.30pm—Mapua Community Hall
Guest speaker, Frank Witowski from Hybrid Bikes on clever marketing.**

MEMBER UPDATE—MEMBER UPDATE—MEMBER UPDATE



Teena and Noël Jelsma are, Neudorf Black. They make Black Garlic, which is white garlic that has caramelised over six weeks of gentle heat and care. As well as the visual change from white to black, the flavour is totally different. Black Garlic has deep rich umami flavours that go well on a luxurious cheese-board or can turn any meal into a gourmet treat. Best of all, there is no garlic breath with Black Garlic and, they only use New Zealand garlic. There are no additives or preservatives, just pure flavour and goodness. Teena and Noël love what they do – making and supplying Black Garlic for New Zealand. You can find Black Garlic at lots of local stores, two stockists in Mapua, three stockists in Upper Moutere and beyond. Check their website www.neudorfblack.co.nz for your nearest stockist and for easy recipes that foodies love.

Follow them on Instagram and Facebook. P: 021 0806 0150 E: tj@neudorfblack.co.nz

Supporting Local Businesses since 1992

Journeys of Discovery

MAY / JUNE 2021



Jobs for Nature Supports WIO Nature Connection Programmes

Thanks to Jobs for Nature funding through DOC, Whenua Iti Outdoors will be able to offer nature connection programmes across the Te Tau Ihu (the Top of the South) to every school aged child over the next 3 years! We received \$980,000 of funding in partnership with local iwi to provide experiences that will promote health & wellbeing outcomes through a deeper connection with the whenua. Dana Carter has been appointed the Project Lead and you can keep up to date with programmes on offer via our website: www.wio.org.nz

Holiday Programmes for 12 – 16 July – Book early!

These programmes fill up fast! We can't wait to run our new **Kaitiaki Kids Holiday Programme** for 11-13yr olds next holidays. The programme will include a week of nature-based day programmes with one over-night adventure at the end – a great stepping stone to our journey programmes offered in the summertime. We also have **Go Wild (in Nature!)** for 7 –10yr olds, which will give your tamariki 5 days of action, nature immersion & outdoor exploration. Head to www.wio.org.nz to book.

Community Trapline Established at WIO

Fay has worked hard to establish an educational trapline on site at Whenua Iti Outdoors. It is set up around the grounds and includes a variety of different NAWAC* approved traps which target different predator species. WIO uses this trapline to teach Secondary School students about various traps & biodiversity management as part of our Trades Academy Programmes. It is also open to community & educational groups to come in and experientially learn about how the different types of traps work, enabling the upskilling for biodiversity action in our region – it's a fantastic resource! Thanks to the Department of Conservation and the Department of Internal Affairs (through Lotteries Grants) for funding this mahi – it's getting great use already! Get in touch if you would like to use it – info@wio.org.nz. *National Animal Welfare Advisory Committee

Whaikaha Programme – Seeking strength from the wilderness

Understanding the positive benefits from time in the outdoors has led to the development of Adventure Therapy – a proven model known to positively impact youth who are needing to reconnect & find direction. The Whaikaha Programme at WIO is open for students aged 13-16 through their school dean or school counsellor. Counselling & mentoring support is provided before, after & during a 9-day wilderness experience. Thanks to the Department of Internal Affairs (through Lotteries Funds) for supporting these programmes which can be offered free to participants. Head to our website to find out more: www.whenuaiti.org.nz/programmes/whaikaha/

Outdoor Wanderings: Search for Glowworms at Pinehill Walkways

Walking at night is a fun adventure for tamariki – especially if you get to look for glowworms! A short walk accessed from Brabant Drive in Ruby Bay links up with McKee Domain is a great spot to find some glow worms working their magic. You could loop back by the beach for stargazing – Matariki will be visible from June 19. Type 'Pinehill Walkways' into your search engine to find a map.



We finally managed a staff photo - the team is growing...!



We'll see you out there!

www.wio.org.nz

Experiential Learning Inspiring Positive Change

The New Steiner Farm School - *"We want Steiner education for our children!"*



This was the shared voice of a small number of parents working together towards a pedagogical goal. Since the early eighties these committed parents contributed years of conviction, ongoing hard work and study, problem solving, and fundraising with the help of many other supporters, and forging close friendships along the way, until finally, now, the Steiner school has moved from the rented building in High Street to its own premises on Robinson Road. Every classroom had to be cleaned, packed up and moved into the new buildings which were being painted and finished until the very last minute.

Up on the hill, each class now has its own little house cabin, overlooking the valley and the mountains beyond.

Being integrated into the State School system, teachers and parents will enjoy more financial security and the support of the Crown. A state principal manages the school, and the special character of the Steiner approach will be maintained. The process of integration is accompanied by supporters from the Ministry of Education in Nelson, as well as the Association of Steiner Schools New Zealand, local members of the Anthroposophical Society, former and recent parents of the school, and worldwide supporters.



Combining the State curriculum and new additions to the Steiner curriculum will require ongoing professional development and a conscious steep learning curve on behalf of the teachers, under the governance of the new principal and Board of Trustees. New ways of learning will be explored and negotiated.

The aim of this school is to become a Steiner Farm School. Part of the land is school land, while another will become an agricultural project to support the community with organic vegies. The current program already includes a kitchen garden and a little orchard with trees pruned to children size. The children learn to harvest vegetables, prepared in their outdoor kitchen to be shared and eaten the same day.

This outdoor program is going to be expanded into an outdoor classroom to be used for craft activities like woodworking, but also welding and activities which will require fire. A suitable place is already under construction.

Not actually part of the school grounds, but part of the property, is a 1.3 ha conventional pear orchard, which had been sprayed with different chemicals for years. Plans are now being developed to turn this conventional orchard into an organic one, treating the soil with bio-dynamic preparations and restorative ground cover to enhance soil fertility. The Landcare group is aiming to use this land as a possible research project in cooperation with training facilities for orchardists and/or other clients interested in sustainable soil management.

The special character of this Steiner Farm school goes beyond school limits, fostering long-term connections with the local Maori community who accompanied the transition from one location to the other with a special dawn ceremony, receiving every new building on the land with songs and prayers for a beneficial reception on the earth and a bright future for the children and their school.

The connectedness of this small but strong Steiner community was evidenced in the ceremonies for the children and parents, in the lead up to the opening celebration for 400 guests under a big tarpaulin in front of the new buildings. Old friends from all over New Zealand, as well as representatives of the Ministry of Education and other advisors were welcomed with music and eurythmy performances on a small make-shift stage. Every child planted a tree on the school grounds to accompany them into the future.

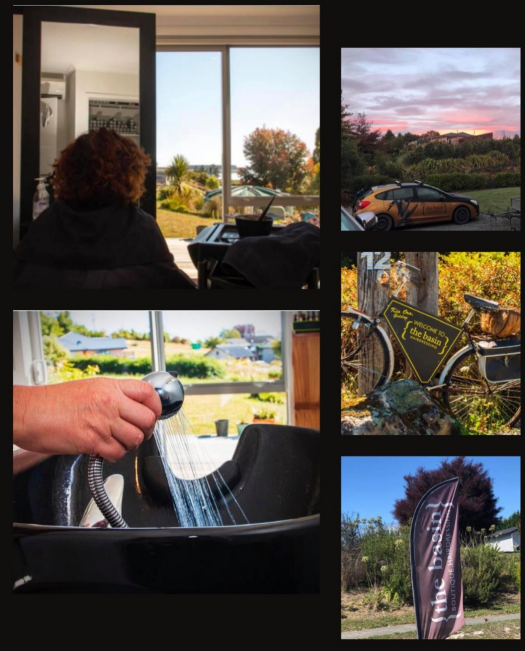
This special opening day ended with a shared dinner for the initial vision holders and committed workers, the first teachers and parents at Riverside community, and was filled with joy, old stories, music and heartfelt memories.

These kinds of connections make up an important and cherished part of the special character of this new Motueka Steiner Farm School and will hopefully continue to carry it into the future.

Edith Bulle

{TheBasin} Boutique Hairdressing ☎0223548771

Relax get pampered enjoy a coffee ☕ while having your hair looked after by Louise Dunlop Hair Designer The Basin Boutique Hairdressing Appleby



PIC•COLLAGE



Qualified Bowen Therapist and a Professional Member of Bowen Therapy NZ.

Bowtech may be considered for, but is not limited to:

- Shoulder, Back, Neck or Sciatica Pain
- Sports related issues
- Respiratory problems
- Hamstring, Knee, Ankle, Foot issues
- Tennis Elbow, RSI or Carpel Tunnel
- Stress, Anxiety and Depression
- Migraines, Earache, Jaw Problems, Sinusitis
- Menstrual Problems, Pregnancy & Newborn Babies

Every Body is better with Bowen!

Contact Suzanne 021 141 4937 for an appointment or book online www.betterbodies.nz

A: 43 Chaytor Rd Upper Moutere E: bowen@betterbodies.nz

BOWTECH®
The Original Bowen Technique

BOWEN THERAPY
NEW ZEALAND®

MOUTERE COMMUNITY YOUTH JUNE 2021 ★

Youth will continue with 3 groups – if your age straddles between two groups, you could come to either or both.

SENIOR

INTERMEDIATE

JUNIOR

4th

Tramping: Mt Arthur/Wharepapa, leaving 7 am! Families welcome. Obviously weather dependant, may do day tramp elsewhere

11th

Nelson Smokefreerockquest 2021
7pm, Theatre Royal, tickets \$10

18th

10-pin
bowling

Stop Motion
Movies

25th

Would you
rather...?

Sports afternoon
MHCC + pizza



For those in year 9
and above, We meet
EVERY Friday 7pm.
Cost is \$2 or more.

QUESTIONS?

moutereyouth@gmail.com
Instagram: moutere_youth
Facebook: Moutere Community Youth

For those in years 7, 8
or 9. We meet
FORTNIGHTLY on 2nd
& 4th Fridays of the
month, at UMO church
hall. 4.30 – 6.30pm.
We do an activity plus
dinner/discussion time.
Cost is generally \$5

For those in years 5, 6,
or 7. We meet
FORTNIGHTLY on 1st
and 3rd Fridays of the
month at the UMO
church hall (Supplejack
Valley Rd), 3.30 – 5pm
but come over for
afternoon tea
beforehand if you like.

NEWS FROM MAPUA BOWLS CLUB

THE WRITE BIAS

News from Māpua Bowling Club

The bowling season drew to a close for Māpua on Saturday 17th April. It is always disappointing to be forced off the green and into the Clubhouse but it has been a successful year with some very high highs and only one notable low, the flood! Fortunately the internal flood damage was not too excessive and didn't impede play for too many days.

Closing Day itself was a lot of fun with a really good membership turnout. After a short game of bowls, trophies and awards were presented by club president, Debbie Win and club captain, Errol Beattie. Club championships happen throughout the year in singles, pairs, triples and fours and all the winners received their silverware. In addition, there were two special awards; the first to retiring greenkeeper, Glenn Saunderson for all of his exemplary work improving and maintaining the green; the second was to Bill McKinlay voted club member of the year for his continual and unassuming help with anything and everything.

We were very grateful to the Sprig & Fern for running a quiz night on behalf of Māpua Bowling Club on Wednesday 28th April. It was a packed house and raised some much needed funds for the Club.

And now it is time to look forward to some indoor carpet bowling as we meet from 5 p.m. on the first and third Friday of every month to socialise, play indoor games and share a meal. Newcomers are very welcome to come along to meet us and join in.

For any information about bowling, coaching or booking the clubhouse and facilities, please contact the secretary, Di Blanchet on 03 540 2627 or check out our website, sporty.co.nz/māpuabowls

Sue England

TASMAN ART FOCUS GROUP (TAFG)

TAFG, a small acronym that is all about a very big event.

Eight local people, the hidden faces behind the Tasman Art Focus Group, are working very hard organising the Tasman National Art Awards and Exhibition scheduled for this October. Because of covid, sadly the event had to be cancelled last year but for 2021, it is definitely on!

It is with great pleasure that this event, backed by 'Impressions' of Richmond, will be brought to Mapua once again from Saturday 2nd October until Saturday 16th October. It is such a wonderful opportunity to see, and possibly purchase, art of a very high standard from all corners of New Zealand and in all the various media - oil, pastel, acrylic, watercolour and multi-media.

It is a real coup for our community and something to note in your diaries and look forward to. If you might be interested in submitting a painting details can be found on our website or Facebook page.

www.tasmannationalartawards.nz

Facebook: Tasman National Art Awards

I look forward to bringing you more information as the year progresses and if you would like to be involved in any way, please make contact with team leader, Glenys Forbes on 03 540 3388 or by email gmforbes@ts.co.nz

Sue England

MOUTERE HILLS COMMUNITY CENTRE



Dear Community

We would like to take this opportunity to thank the organisers of the Moutere Hop (Miles, Shane, Scott and Graeme) who have donated \$5000 to the Community Centre towards the up-grade of the visitor changing area to allow for more usage. We really appreciate their support and are proud to host the annual Moutere Hop. Moutere Hills Community Centre is extremely excited to be able to put in individual shower cubicles which will allow for extended use of that space for both Fitness Centre members and people who are attending sport or recreational activities at the centre.

We have a full schedule of activities on offer to the community, many being run by our amazing team of volunteers. There has been interest shown in us running a children's basketball and a youth/adults pickleball session. If you would be interested in either of these activities then please give us a call or send us an email.

Kind Regards Katrina, Adele, Keith, Cindus and Heather

Social Sports

Only \$3 per person, per session. No bookings required. All welcome!



Volleyball		
Social	Mondays	7:30pm - 9:00pm
Competitive	Thursdays	7:00pm - 9:00pm
Badminton	Tuesdays	7:00pm - 8:30pm
Table Tennis	Wednesdays	7:15pm - 9:00pm
Basketball	Saturdays	From 10:00am



Fitness Classes

Mondays	Re-Activate	9:30am - 10:15am
Tuesdays	Stretch & Flex	9:30am - 10:15am
	Box'n Burn	6:00pm - 6:45pm
Wednesdays	Metafit	6:00pm - 6:30pm
	Core	6:30pm - 7:15pm
Thursdays	Stretch & Flex	6:00pm - 6:45pm
Fridays	Metafit/ Core	9:00am - 9:45am

FREE for Fitness Centre members or \$7 per person, per class.

Concession cards also available: \$50 for 10 classes.

UPPER MOUTERE PLAYGROUP IS PROUD TO BRING YOU THE

POP-UP Library



30th June
9:30 - 11 am
Moutere Hills
Community Centre

10am Children's Storytime
with Mary

TAKING THE LIBRARY TO THE PEOPLE



Follow us on Facebook

For updates on upcoming activities and event, community notices, promotions, and more.....

www.facebook.com/MoutereHillsCommunityCentre



Phone: 543 2516

Email: enquiries@mouterehills.org.nz

Website: www.mouterehills.org.nz



MOUTERE HILLS COMMUNITY CENTRE



Dates For Your Diary...



TAKE OUR HISTORY INTO THE FUTURE!

The Moutere Hills Community Centre History Group will be hosting two Community History Afternoons:

**Thursday 24th June
1pm**

Tea and Coffee provided along with two presentations;

- Mr Graeme Tyree will launch his newly published book, "Moutere Pioneers"
- A Former pupil of Upper Moutere School will present "A Meander Through Time", a presentation on school-days in the 1950's

**Thursday 16th September
1pm**

Visit local historical sites, followed by afternoon tea back at the centre;

- Settlers Cottage
- Harvey Hop Kiln

All welcome!

COUNTRY Christmas Market

Saturday 4th December 10:30am—3:00pm

**We are now taking bookings for stalls at our
Country Christmas Market.**

Visit our website for further details or to book!



Phone: 543 2516

Email: enquiries@mouterehills.org.nz

Website: www.mouterehills.org.nz



Rod Dohrman Property Maintenance

- Weed-eating & lawn mowing
- Garden clearance & upkeep
- Hedge trimming
- All general indoor & outdoor maintenance
- Long term contracts

Call Rod on 0274 333 048
or email rod.dohrman@xtra.co.nz



CALL US TODAY
027 385 5998

Tasman Earthworks & Construction operate throughout the greater Nelson Tasman region, offering a wide range of excavation and construction services.



✉ info@tasmanearthworks.co.nz

🌐 tasmanearthworks.co.nz



Motueka Vehicle Testing Station

Drive in – WOF – Drive out

25 Huffam street

No Booking Required

Turn into Old Wharf Rd and left into Huffam Street.



LEIGH BRIARS ARCHITECTURE

03 543 2667

021 215 0946

briars@ts.co.nz

RD 2 Upper Moutere

Nelson 7175



HAIRDRESSING

CALL TO ARRANGE AN APPOINTMENT
(03) 5432297 • 027 472 8863

Heine's

Cartage and Contractors

We have trucks, excavators, a dozer, a grader, and the expertise to do all your cartage, drainage, building site & foundation, roading, and subdivision work.



40 years of local knowledge

and experience in the transport and contracting industry

Phone Wayne on 03 5432 788

027 430 2725

Or call in at our workshop and office at

1455 Moutere Highway

(by the firestation)

UPPER MOUTERE



ALL BUILDING WORK



LARGE OR SMALL
NEW BUILDS • SHEDS • REPAIRS
ALTERATIONS
DESIGN & PLANNING SERVICE
DIGGER & DRIVER HIRE
EXPERIENCED LOCAL
LBP BUILDERS

0211 408077

ntconstruction@xtra.co.nz

www.nelsonandtasman.co.nz

Harcourts

Harcourts Mapua.
The "Big Little Office"
in Mapua.

Buying, Selling and
Property
Management.

Locals looking
after locals.

Harcourts Mapua—2A Iwa Street, Mapua.
Phone: 03 540 3425
www.motueka.harcourts.co.nz

Arrow Realty Limited • Licensed Agent REAA 2008



Amanda James
Manager / Salesperson
027 472 1960



Jen Williams
Salesperson
027 738 8545



Robbie Mitchell
Salesperson
027 2324 500



Jimmy Lillington
Salesperson
021 158 1773



Sian Potts
Salesperson
027 296 8345

UV TREATMENT
WATER SOFTENERS & RO UNITS
SAND & NEUTRALISING FILTERS
DOMESTIC/COMMERCIAL PUMPS
STOCK WATER & GRAVITY FEED SUPPLIES
MICRO HYDRO PIPE LINES
WATER RAMS PUMPS
WATER TANK INSTALLATION

water
FILTRATION
& PUMPS

Frans van de Loo
0275 281 366
frans.wfp@gmail.com
waterfiltrationpumps@gmail.com

kina Campers

CARAVAN RENTAL
Local business offering great value, good quality, well equipped UK caravans available for short and long term rental. Can be delivered and set up to a campsite/location of your choice. Short term holiday rates from \$50 a day. Long term static hire from \$100 pw.

www.kinacampers.co.nz
Email: info@kinacampers.co.nz

electrical worx 2017 LTD

We recommend **TOSHIBA** HEAT PUMPS
Think Toshiba, Think reliability.

• Heat Pump installation on all makes
• SmartVent installation

"FOR ALL YOUR ELECTRICAL NEEDS"

DOMESTIC | INDUSTRIAL | COMMERCIAL
• Servicing • Installation • Maintenance
PROUD TO BE CHOSEN FOR THE ELECTRICAL WORK

PH 03 528 0075
0800 WORK4U

Hon Damien O'Connor

MP for West Coast-Tasman

Minister of Agriculture, Biosecurity and Food Safety
Minister for Rural Communities
Minister of State for Trade and Export Growth



Freephone: 0800 326 436

181 Tainui St, Greymouth
Phone 03 768 7189

208A Palmerston St, Westport
Phone 03 789 5481

234 High St, Motueka
Phone 03 528 8190



/damienoconnormp



@damienoconnormp



Labour

Authorised by Hon Damien O'Connor, Parliament Buildings, Wellington

MyPersonalPlumber

Alex Bint
0800 444 343
027 542 4329
alex@mypersonalplumber.co.nz
www.mypersonalplumber.co.nz
1366 Moutere Highway,
RD1, Upper Moutere, 7173

architecture studio | mapua

- Sustainability
- Innovation
- Craftmanship

Simone Wenk
Reg. Architect (Germany), LBP Design 2 (NZ)
03 540 3282 / 021 1049 039
simonewenk@xtra.co.nz

Shed 4, Mapua Wharf
www.architecturemapua.co.nz

BIO LOO

THE SPECIALISTS IN COMPOSTING TOILETS

"The call of nature can be kind to Nature"

NO POWER

NO WATER

NO CHEMICALS

NO POLLUTION



ORDER NOW

These toilets are the good looking, sensible answer to human organic waste management. Environmentally friendly, they are economical easy to install and require little maintenance

Toilets are vented so there are no unpleasant odours, no need for toilet cleaners or room deodoriser. They meet all required NZ Standards and building codes and are in use by DOC and regional councils. Cheaper to purchase and install compared to other systems, right from the start. You can leave the system to work for you and in the end will have safe, composted material that can be used in your gardens.

Great for you and Better for the planet!




CALL US NOW ON

www.biolo.co.nz

03 526 7882

CH-773027AA



Steve Jones

CONTRACTING

jones177harley@gmail.com

0275 523 377

- 2 ton excavator
- Augering/stump grinding
- Site Works
- Retaining Walls
- Fencing
- Small Hedge/Shelterbelt trimming
- 3.7m high—top at 2.8m
- Free Quotes
- Based in Harley Road
- Now offering a stump grinding service

A great job at a GREAT Price!

SUN ELECTRICAL

Phone: 03 540 2367

www.sunelectrical.co.nz

Tony: 027 3784 580

Troy: 022 080 4751

124 Aranui Rd
Mapua, Nelson 7005
sunelectrical@xtra.co.nz

Domestic
Industrial
Commercial
Caravan WOFs
Solar Power Systems

Our highly skilled and experienced electricians can provide solutions to meet your electrical needs

- New house/shed wiring
- Rewiring
- Alterations and repairs
- Hot water elements and thermostats
- Energy saving solutions
- Power bill forensics
- Garden and outside lighting
- Solar power systems
- Caravan electrical warrants
- Sewerage and pumping systems
- Test and tag
- Switchboard upgrades and replacements
- Oven and store repairs
- Urgent breakdowns
- Industrial wiring and maintenance

www.sunelectrical.co.nz

We can help your business grow



PITT & MOORE

LAWYERS AND NOTARIES PUBLIC

Nelson 03 548 8349

Richmond 03 543 9090

www.pittandmoore.co.nz

Low Ki Link

We now have three chiropractors available



Corrian



Bryony



Hamish

Keeping you in the game since 2002



**Tasman Bay
Chiropractic**

Monday-Saturday
03 544 4554

64 Oxford St Richmond

tasmanbaychiropractic.co.nz [Find us on](#)

LOCAL MIDWIFE CLARE SPRATT

Ring Clare for friendly professional maternity care
and advice.



*I offer full 24 hr maternity care from conception through to
6 weeks post natal, home/hospital and water births,
birthing pool available, natural remedies,
free pregnancy testing, breastfeeding support and much more.*

T: 03 526 7764

M: 0273324929

E: midwifeclarespratt@me.com



TOWN & COUNTRY VET

RICHMOND



Dog Wash K9000

Coin and note operated

Open 24 hours

7 days



**green world health
& Lifestyle**

Sole Supplier of
Dr. Hauschka
Products
in Motueka.



Open 7 Days



177 High Street, Motueka

Ph: 03 528 7262

E: greenworldhealthandlifestyle@gmail.com



**Dorothea
Tebbenhoff**
Acupuncture



Licensed Acupuncturist
MAcNZ, Acc Provider

Re-located to Motopolis building

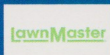
31 Wallace St, Motueka

027 214 6444

www.tasmanacupuncture.co.nz

LOWCOST LAWNMOWERS

SALES • SERVICE • REPAIRS



Dennis Webster
OWNER / OPERATOR



144 Moutere Highway
E: lowcostlawnmowers@xtra.co.nz
Ph: 03-547 4038 M: 0274 071 328

WWW.LOWCOSTLAWNMOWERS.CO.NZ



ROTARY MOWERS
RIDE-ON MOWERS



HAND MOWERS
REEL MOWERS
CHAINSaws
LINE TRIMMERS
HEDGE TRIMMERS
GARDEN TOOL SHARPENING

FREE PICK-UP & DELIVERY
(CONDITIONS APPLY)

MOUNTAIN VIEW

Building & Joinery
Maintenance Services

No job too small

Ph: 027 5520063

- Carpentry
- Joinery
- Residential/Commercial
- General Maintenance
- Flat pack kitchen/furniture assembly & installation services
- Gib repairs & plastering
- DIY assistance
- Building Act/Code & Schedule 1 Guidance

National Diploma in Building Control Surveying

MOWTIVATED

Lawn & Garden LTD

For all your garden needs:

- Weeding & Mulching
- Pruning & Hedge Trimming
- Push & Ride-on Mowing
- Brush Cutting
- Green Waste Removal
- Lifestyle Blocks

Something you want done not listed above?

Give us call!

Michael and Anita are a husband and wife team with a passion for providing excellent quality garden services. We are not afraid of taming wild gardens.



027 599 3304

No job too small, just give us a call. Free quotes!

MOTUEKA ELECTRICAL

NEW BUILDS RENOVATIONS MAINTENANCE HEAT PUMPS

LUUK HERMENS

027 588 5774

03 528 4488

motuekaelectrical@mail.com

admin@motuekaelectrical.com

HEAT PUMP SUPPLIER & ACCREDITED INSTALLER

Horse Cover & Gear Repairs

Horse Cover Washing

Prompt Service

Good Rates

Contact Lawrie

1350 Moutere Highway

Ph: 03 543 2234

021 208 2192

Mark Carey CONTRACTING LTD

Mark: 021 454 000

Anne: 021 454 731

Phone: (03) 526 7004

Fax: (03) 526 7014

Email: mark.carey@xtra.co.nz

28 Holdaway Road

RD2 Upper Moutere Nelson 7175



For all land development, cultivation, direct drilling, re-grassing,

www.markcareycontracting.co.nz



Hardy Landscapes

Water Features

Paving

Rock Work

Irrigation

General Landscaping

Michael Hardy

Ph: 021 443 908

A/H: 03 543 2555

Endurance spraying

All types of weed spraying
Gorse and Brushweed
Control

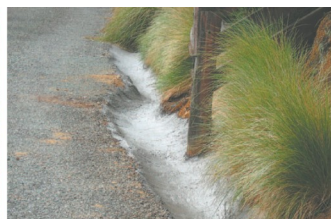
Commercial • Residential
Forestry Road Spraying
Moss treatment for lawns,
concrete areas and decks.



Contact Pete Hughes

021-194 2654 A/H 03 544 2654

Growsafe certified •
Approved Handler



CONCRETE & METALS

TASMAN BAY LTD



For a
Free Quote phone
528 6344

AFTER ALL THIS RAIN! HOW'S YOUR DRIVEWAY?

Protect your property before winter sets in. Driveway drainage and gravelling -
culvert maintenance and clearing - ditch and stream maintenance.

Locally owned & operated supporting our community

PH 03 528 6344 (24HRS) 99 KING EDWARD ST, MOTUEKA WWW.CONCRETE-METALS.CO.NZ



**TOWN & COUNTRY
VET**

"...for all creatures great & small..."

**Regular Moutere visits
discounted mileage
T&Cs apply**

Ph 544 1200


info@tcvet.co.nz * www.tcvet.co.nz

**25 Edward Street, Wakefield
35 McGlashen Avenue, Richmond**


24 hour emergency vet

Simplicity Funerals

Simply respectful. Simply affordable.



ANNA LOACH
Manager & Funeral Director



ANDREA BABINGTON
Funeral Director

Why Choose Us?

Simple really ...
... we excel in honouring,
celebrating and memorialising
your loved one together.

NELSON & TASMAN WIDE, WE'RE PART OF YOUR COMMUNITY

69 Haven Road, Nelson | Phone 03 539 0066
www.simplicity.co.nz



**Groovy
Paws
Dog Grooming**



Caroline Lusty, 115 Tarrant Rd, Mahana
Ph: 03-543 2277 027 520 1285
Email: caro.lusty@xtra.co.nz



Tile It

Custom Tiling
Waterproofing
Wood Flooring

Tom
021-0485649
03-5432644

Looking for certainty re legal fees?

Wary of the timecard being clicked for every phone call, every email, every single quick question? We offer a quality professional service at fixed fees to avoid the nasty surprises.

See us for all your Residential and Commercial Conveyancing, Refinancing, Debt Consolidation, Wills and Enduring Powers of Attorney, Relationship Property, Trusts.

THE LEGAL HOUSE

TLH Law Limited

Josh Boyce L.L.B. Lawyer | Robert Styles L.L.B. Lawyer
Pauline Scott DipLegalExec.NZLS | Yvonne Watson DipLegalExec.NZLS

Now at 33 Trafalgar Street, Nelson
PO Box 332, Nelson 7040
P 03 548 7839
F 03 548 7842
www.thelegalhouse.co.nz



JOHN BUCHANAN
027 3099920

QUALIFIED BUILDER

New homes, renovations, decks, fencing.
Give me a call to discuss your project.

Licensed Building Practitioner

MOUTERE MASSAGE

FIONA RAMSAY

QUALIFIED AND PROFESSIONAL

*SPORTS *DEEP TISSUE *INJURY REPAIR

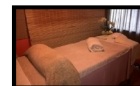
*FOOT REFLEXOLOGY *BOWEN THERAPY

20 WILSON ROAD

UPPER MOUTERE

PH./TXT 027 452 3906

MON, TUES, WED & FRI



STONESCAPE LANDSCAPING YARD "YOUR LOCAL LANDSCAPING SPECIALIST"



NEW TO LANDSCAPING YARD 3 TONNE DELIVERY TRUCK

BARK - 10 SCOOPS GRAVEL - 3-4 SCOOPS
COMPOST - 8 SCOOPS SAND - 4 SCOOPS
TOPSOIL - 5 SCOOPS SHELL - 4 SCOOPS

\$40 Delivery Central Motueka Area
Elsewhere normal charges apply



PEASTRAW SMALL BALES ONLY \$16 EACH



RAILWAY SLEEPERS - Length 2.1m ONLY \$60 EACH

**OPEN MONDAY TO FRIDAY 8AM-5PM
AND SATURDAY MORNINGS 9AM-12PM**

STONESCAPE
Garden Supplies

CONCRETE & METALS TASMAN BAY LTD
NEW LOCATION 99 King Edwards St, Motueka
(03) 528 6344 info@stonescape.co.nz

**CONCRETE
& METALS**
TASMAN BAY LTD

Trade and Professional Services List

Please support our advertisers

What	Who	Contact
Accommodation	Tasman View Accommodation	www.tasmanview.co.nz
Accounting Bookkeeping	Crux Advice & Accounting Ltd	03 539 0645 Mob: 021 154 1333
Acupuncture	Dorothea Tebbenhoff	027 214 6444
Architectural Designer	Leigh Briars	021 215 0946 AH: 03 543 2667
Architectural Designer	Simone Wenk	021 1049 039 AH: 03 540 3282
Composting Toilets	Biolo - Roy	03-526 7882
Builder	Andrew Eggers	027 446 0739 AH: 03 543 2757
Builder	Jason Frater	021 743 497 AH: 03 528 0337
Builder	NTC	021 140 8077
Builder	John Buchanan	027 309 9920
Caravans	Kina Campers	www.kinacampers.co.nz
Chiropractors	Tasman Bay Chiropractic	03 544 4554
Child Care/Early Childhood Education	Country Kids Manager - Nickie	www.countrykids.org.nz
Concrete	Concrete & Metals Tasman Bay	03 528 6344
Contactors	Tasman Earthworks & Construction	021 119 2239
Contractors	Steve Jones Contracting	0275 523 377
Contractors & Cartage	Wayne, Heine	027 430 2725 AH: 03 543 2788
Dog grooming	Caroline Lusty, Groovy Paws	027 520 1285 AH: 03 543 2277
Electrician	Electrical Worx	0800 967 948
Electrician	Luuk Hermens, Motueka Electrical	027 588 5774 AH: 03 528 4488
Electrician	Tony, Sun Electrical	03 540 2367 Mob: 027 3784 580
Food for Community (Food Bank)	Kai Collective	021 2626 675
Hairdresser	Country Cuts	027 472 8863 AH: 03 543 2297
Hay and baleage production	Mark Carey Contracting	021 454 000 AH: 03 526 7004
Health & Wellbeing	Greenworld Health & Lifestyle	03 528 7262
Horse cover/gear repairs	Lawrie	03 543 2234 Mob: 021 208 2192
Horse therapy	Tasman Equine Therapies	027 452 3906
Kitchens	Moutere Village Kitchens - Steve Farmer	021 0839 1206
Landscaping	Mow-tivated Lawn & Garden	027 599 3304
Landscaping	Michael Hardy, Hardy Landscapes	021 443 908 AH: 03 543 2555
Lawnmowers	Lowcost Lawnmowers	0274 071 328
Lawyer Legal Services	Pitt & Moore	03 543 9090
Lawyer Legal Services	The Legal House - Yvonne Watson	03 548 7839
Massage	Fiona Ramsay	027 452 3906
Mechanic	Moutere Motors	03 543 2707
Midwife	Clare Spratt	027 332 4929 AH: 03 526 7764
MP	Damien O'Connor, Labour Party	0800 DAMIEN
Nursery	The Nursery @ 35 Horton Road Tasman	021 122 3056
Painter	Glen, Vision Painting Tiling & Plastering	020 4091 7929
Play Group	Karen Barnett	021 252 2657
Plumber	Alex Bint, My Personal Plumber	027 542 4329 AH: 0800 444 343
Pre-loved clothing	Brook Street Lounge	151 Aranui Road, Mapua
Property Maintenance	Rod Dohrman	027 433 3048
Property Management	Sian Potts Harcourts	0272 968 345
Pub/Restaurant	The Moutere Inn	03 543 2759
Real Estate	Harcourts Mapua	03 540 3425
Real Estate	PGG Wrightson Doug Smith	027 543 2280
Recreation Centre	Moutere Hills Community Centre	03 543 2516
Scaffolding	Tasman Bay Scaffolding Ltd	021 436 832
Social Club	Beryl or Shirley	03 543 2122/03 543 2438
Spraying	Pete Hughes, Endurance Spraying	021 194 2654
Tiling	Tile it (Tom)	021 048 5649 AH: 03 5432644
Vet	Town & Country Vet	03 544 1200
Water	Water Filtration & Pumps Frans	0275 281 366
Water	Complete Water Solutions	03 528 0040
Winery	Gravity Winery Cellar Door	03 543 2817
WOF	Motueka Vehicle Testing Station - no booking required	25 Huffam Street
Youth Group	Tessa Werner	022 101 2276