

The Grapevine

MOUTERE HILLS COMMUNITY NEWS

Inside this issue:

Administration	2-3
Animals	12-13
Community	3-8
Contractors	10-15
Education	9
Health & Wellbeing	20
Professional Services	24
Recipe	8
Recreation	4-5

Special points of interest:

The Mission Bridge on the Moutere Highway is closed. Please take care using the detour routes.

Please support our local businesses as soon as we can!

Thank you for reading and for supporting the advertisers

LIGHTS, CAMERA, ACTION



When Kate Eggers and Simon Lea moved to the Moutere six months ago, they started a new business venture using their video production expertise.

Kate and Simon are happily settling into life and work in the Moutere after their years overseas and in Auckland. Kate, who grew up on her family's farm in Upper Moutere, was keen to bring their skills to this beautiful region and help grow its local businesses.

She and Simon met during their time working on cruise ships – Simon as a videographer – jobs that took them around the world and saw him filming across the Caribbean and through the Panama Canal, as well as a few close calls with wild bears in Alaska.

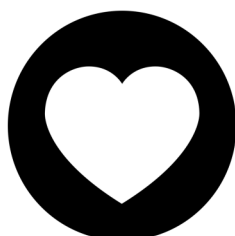
The last seven years has seen Simon working with major clients in Auckland including BNZ, Fonterra, Vodafone, D3, Civil Defence and Sealord. "It was an

awesome time; I directed everything from promos to training videos and TV adverts," he says.

The couple moved here two days before Christmas and were about to launch into their own media production business on 1 April when the nationwide lockdown put a temporary stop to their plans – but not before they had filmed promo videos for the Sarau Festival and The Moutere Hop!

Up and running in Alert Level 2, they have plenty of projects to get cracking on with. "For us it's all about helping local businesses – whether it's to promote online product sales or to create engaging health and safety videos," says Simon. "We start by sitting down for a chat with the business owners to understand their long term goals. Once we know that, we can build a marketing strategy to really engage their target audience and help take their company to the next level."

Story Continues on page 3



Moutere Hills Support

The Moutere Hills Community are here for you as we deal with COVID-19 together.

www.mouteresupport.co.nz

facebook.com/mouterehillsnz

03 928 0893



PLACING AN ADVERTISEMENT

Thank you for advertising in the Grapevine—you help us cover the cost of producing and delivering this free community newsletter each month.

The deadline for each issue is the 15th of the month.

Please email your print-ready ad to—umograpevine@hotmail.com or provide paper based, print-ready copy to Tanya Doty at the Old Post Office/Moutere Gold.

The following prices apply for advertising:

- ∞ Births, marriages, deaths and giveaway notices: free
- ∞ Business card size advertisement: \$12
- ∞ 1/4 page advertisement: \$25
- ∞ 1/2 page advertisement: \$50
- ∞ Full page advertisement: \$95 (if space available).

Please deposit payment (and identify it with your name) to our account: NBS 03 1354 0229034 16.

Sending us editorial items

We warmly welcome editorial contributions to the Grapevine from all residents in the Moutere and Tasman regions. You make the newsletter an interesting read!

There is no cost to having your articles published but if you are telling the community about a commercial or fundraising venture, we do appreciate a small donation to help us cover our costs—see above for bank details.

Archived coloured copies of the Grapevine are available at www.mouterehills.org.nz/community/the-grapevine courtesy of the Moutere Hills Community Centre Staff.

Grapevine circulation is 1300 copies. This issue has been constructed by volunteers: Miriam Lynch, Tanya Doty, Beverly Sellers, Sharon Beuke, Heather Eggers and Annabel Duncan.

Disclaimer

Views expressed in articles in The Grapevine are not necessarily those of The Grapevine team or its editor. While every effort has been made to ensure the accuracy of the information included in this publication, The Grapevine takes no responsibility for errors or omissions or for any consequences of reliance on this information. Publication of advertising material implies no endorsement of either a product or a service.

The Grapevine has the right to refuse publication of advertisements or submissions that are inappropriate, offensive or defamatory.



**Call us for a quote or estimate on
your next building project**

0274 460 739



021 743 497

**jasonfraterbuilders.co.nz
Building outside the box**



CompleteWaterSolutions

**COME AND SEE US
FOR A GREAT DEAL**



24 Huffam Street Motueka

Ph: 528 0040

www.cwsnz.co.nz

LIGHTS, CAMERA, ACTION

Having all the professional equipment – cameras, green screen, autocue, drone – means Kate and Simon can add excitement and out-of-the-box thinking to their videos, no matter what size the company. “Helping a business expand is easy with social media. If the goal is regional, national or global, video production can help businesses get themselves out there!”

Not everyone relishes being in front of the camera, as Simon knows well from his years of experience in working with small businesses to huge companies. “We have plenty of techniques to help people to relax and sound confident, which is particularly important for training videos,” he says. “I also do a monthly blog on our website, with hints and tips about how to make the most of your video productions.”

Whilst Simon is the Producer and behind the lens at Tasman Bay Media, Kate is the Production Manager, using her natural organisational and people skills to get to know the needs of local businesses and turn their ideas into reality.

Find out more at www.tasmanbaymedia.co.nz or call Kate on 027 2267 118.

The Grapevine says.....

Well it looks like we're going to have to make the most of all we have around us and luckily that's plenty of all the good stuff. If you have been doing a bit of bread baking lately you'll be whipping Soo Gee's beer bread recipe up in no time - check it out it's easy peasy.

The focus is very much now on supporting local. Overseas travel restrictions will hopefully mean we see an influx of local travellers into our area and we can make a difference too - keep our district flourishing by supporting local happenings whether it is a fundraiser, a sports event or just a social event, keeping our relationships healthy and strong will reflect back into our community. Most months the Grapevine has a great list on the back page of local businesses. They all advertise with us with the intention of capturing local customers so make sure to go to that when you're looking for any kind of goods and services, there really is a lot on offer in our district.

Stay warm

Motueka Vehicle Testing Station

Drive in – WOF – Drive out

25 Huffam street

No Booking Required

**Turn into Old Wharf Rd and left into
Huffam Street.**



UV TREATMENT

WATER SOFTENERS & RO UNITS

SAND & NEUTRALISING FILTERS

DOMESTIC/COMMERCIAL PUMPS

STOCK WATER
& GRAVITY FEED SUPPLIES

MICRO HYDRO PIPE LINES

WATER RAMS PUMPS

WATER TANK INSTALLATION

water
**FILTRATION
& PUMPS**

Frans van de Loo
0275 281 366

frans.wfp@gmail.com
waterfiltrationpumps@gmail.com



MyPersonalPlumber

Alex Bint
0800 444 343

027 542 4329
alex@mypersonalplumber.co.nz
www.mypersonalplumber.co.nz

1366 Moutere Highway,
RD1, Upper Moutere, 7173

CAS Drainage

Certified Drainlayer.

Residential, commercial and industrial.

New installs, repairs and maintenance.

Competitive rates. Email or Call for a free quote

casdrainage@xtra.co.nz 027 300 6422

MOUTERE HILLS COMMUNITY CENTRE



Dear Community

It is great to be back in operation again and nice to have caught up with so many of you over the past few weeks. The Fitness Centre is back in swing and we are hoping to re-introduce more classes over the next few weeks. Some social sports have restarted and the rest will start again soon. We are also looking into the possibility of some new activities and classes but would like to gauge interest before we organize them. If you are interested in any of the following then could you please register your interest by emailing Katrina@mouterehills.org.nz and indicate which activity:

- *Preschool dance*
- *Dance*
- *After School Art Class*
- *Adults Art Class*
- *Social Netball*

Thank you. If you have any enquiries then please do not hesitate to contact us.

Kind Regards Katrina, Adele, Marv, Cindy, Cindus and Keith

PARTICIPATE AND CREATE

Why not join one or both of the new community groups starting in June here at Moutere Hills Community Centre.

COFFEE AND CRAFT GROUP

Tuesday mornings from 10:30am - 12:00pm.

Come along with your own art and craft and have a coffee and chat with like minded people while getting creative. Teach others a new skill or work individually. All age groups welcome.



HISTORY REVISITED

We are looking for people in the community who would like to be part of an MHCC History Group. We would like to preserve the history of the area and add to the wonderful displays already at the centre for the whole community to enjoy. Day and time will be set to suit the majority!

Please register your interest by emailing katrina@mouterehills.org.nz

Preschool Arts and Crafts



Tuesday's from 9:30—10:15am

Enrol your child for this great new class starting soon. Parent/Caregiver participation is required, and once we move to Level 1 you will be able to stay for a chat, cuppa and play after the class!

Only \$20 for 4 weeks.

Numbers limited, 9th June - 30th June.

To book email enquires@mouterehills.org.nz or book online at www.mouterehills.org.nz



Phone: 543 2516

Email: enquires@mouterehills.org.nz

Website: www.mouterehills.org.nz



MOUTERE HILLS COMMUNITY CENTRE

FITNESS CENTRE



The Fitness Centre now has a new booking system for registering for classes. To ensure maximum attendance numbers aren't exceeded it is essential that you book your space, drop ins are no longer possible. This new procedure was introduced to manage numbers under Alert Level 2 but as it has been working well so we will be utilizing it on an ongoing basis. You just register your intention to attend a class between 2 weeks and 2 hours prior to the class beginning. If not a Fitness Centre member you can pay online for individual classes or purchase a concession card.

Check it out on www.mouterehills.org.nz/fitness-centre-calendar

FITNESS CLASSES CURRENTLY ON OFFER

Monday	Re-Activate with Adele Metapro with Cindus	9:30am - 10:15am from 5:00pm
Tuesday	Re-Activate with Adele	6:00pm - 6:45pm
Wednesday	Metafit with Cindus Core Foundations with Cindus	6:00pm - 6:30pm 6:30pm - 7:15pm
Friday	Metafit with Cindus Core Foundations with Cindus	9:00am - 9:30am 9:30am - 10:15am

NEW

metaPRO

Take your High Intensity Interval Training to the next level with new Speed, Agility and Quickness drills and training movements!

- * MetaPro is designed for ultra-small groups, meaning each session will cater for a maximum of 5 people at once.
- * 4-week block (you must sign up and attend 1 session each Monday for 4 weeks)
- * Cost of just \$20 for 45 minutes per session!
- * We have times available between 4:30pm-7:30pm and will run separate kids, youth and adult sessions if we have enough numbers



INDIVIDUAL PERSONAL TRAINING

Book your session with Adele or Marv to kick start your training programme.

Sessions are 30 minutes or 60 minutes long.

Regular or one off sessions available.

Contact Adele on 027 5118826 or Marv on 0273126435 to book your spot.



Phone: 543 2516

Email: enquiries@mouterehills.org.nz

Website: www.mouterehills.org.nz





BROOK STREET LOUNGE
SUSTAINABLE CLOTHING

RECYCLED CLOTHING

WE HAVE MOVED – BUT NOT FAR...

STILL OPPOSITE MAPUA SCHOOL ON MAPUA DRIVE

Open Friday, Saturday and Sunday 11-3pm

Get in touch through facebook or instagram. @brookstreetlounge

LOTS OF AUTUMN AND WINTER CLOTHING AT \$10 - \$20

Harcourts

Harcourts Mapua "The Big Little Office" in Mapua

Buying, Selling, Property Management—locals looking after locals



Franklin Op den Buysch
Salesperson
027 445 6581



Sian Potts
Salesperson
027 296 8345



Amanda James
Manager/Salesperson
027 472 1960



Jayden Terris
Salesperson
021 0293 0220



Jen Williams
Salesperson
027 738 8545

Harcourts Mapua - 2A Iwa Street, Mapua - 03 540 3425

www.teamtasman.co.nz Arrow Realty Limited Licensed Agent REAA 2008

GRAVITY WINERY CELLAR DOOR—MAHANA

Booster Wine Group, purveyor of renowned Kiwi wine brands, have their Cellar Door at Tasman based Gravity Winery, offering visitors the chance to taste an expansive selection of world-class New Zealand wines in one location.

Sitting in the Moutere hills of the sunny Tasman region, Gravity Winery's state-of-the-art wine-making facilities is the chosen location for Booster Wine Group's Cellar Door, due to its stunning location that has been a favourite to many locals over the years. They are offering a tasting experience like no other in the region, where you can taste and purchase wines from Nelson, Central Otago, Marlborough and the Hawkes Bay. A taste of New Zealand's wines from the top wine growing regions in this country, right on your doorstep.

Louis Vavasour, joint CEO of Booster Wine Group, says the wineries in their portfolio are aligned by a shared vision of innovative thinking and challenging the rules of traditional winemaking.

"Our wineries push the envelope to create new standards of quality, so we're delighted to be able to share our craft with locals and visitors to the region."


Nigel Avery, joint CEO of Booster Wine Group, sees the Cellar Door as a revitalisation of an iconic winery. "We are aiming to showcase our finest offerings from our wineries, creating a space for wine enthusiasts of all levels to taste a range of quality New Zealand wines in a unique and stunning location."


Gravity Winery, formerly Mahana Estate winery, has truly earned its unique name. The four-level winery cut into the side of a hill is one of only a few gravity-fed wineries in New Zealand, meaning no pumps are used during the winemaking process. The gravity-fed system enables the Group to handle wines in a different way, making for a better-quality product – the less you push and pull a wine, the better, letting the wine speak of its place.

Gravity Cellar Door offers a range of tastings, wine sales and a simple, but delicious array of local platters to enjoy on the deck. Their professional and friendly staff will be available to guide guests through the tasting process, offering helpful information and answering your questions along the way." Open seven days a week, 11am till 5pm for tastings, wine sales and food.

They are also busy putting the finishing touches on a studio next to the Cellar Door for local artists and creatives to show case their works. It is something the owner of Booster Group, Allan Yeo has wanted to do since purchasing Gravity Winery. Giving something back to the local community and supporting their passion in a great location. It will be a wonderful space run by the artists themselves and another reason to make a trip out to Gravity Winery Cellar Door an afternoon event. Make sure you have plenty of time to taste, eat, shop and enjoy supporting local.

The Cellar Door team look forward to welcoming you very soon.




GRAVITY WINERY
CELLAR DOOR

Spend the afternoon relaxing with the stunning vista of the Tasman region in front of you, while enjoying a glass of your favourite wine.

Complementary bread and dips to celebrate our re-opening
Wine tastings - Local platters - Wine Sales

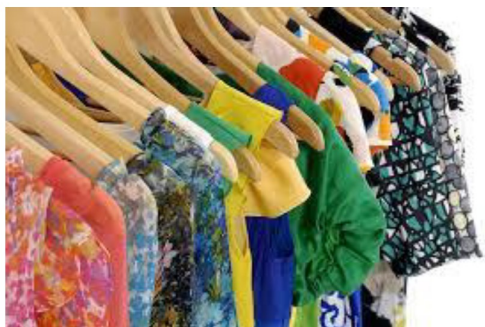
Open 11am - 5pm Daily
www.gravitywinery.co.nz
243 Old Coach Road, Mahana 7173 P: 03543 2817

WANTED!

Good quality, pre-loved

CLOTHING

SHOES & ACCESSORIES



for the SARAU WINTER SALE
29th – 30th August

Please drop your donations in the collection
bin at COUNTRY KIDS anytime!

Thank you!

RECIPE

No Fuss Beer Bread

This month Soo Gee has given us a recipe for anyone who didn't have success with bread making in the past few weeks - it's fast and easy and delicious!

No Fuss Beer Bread

Oven at 180c

Place 3 cups self raising flour in a large bowl. Add 1 tablespoon of sugar and a pinch of salt. Make a well in the centre. Slowly add 1 can (355ml) of lager. Mix to combine, add a few grains if you wish, transfer to a greased loaf tin, brush the top with milk - cooking time 45-50 minutes.

Served with butter and beer!!

NEW: Local pickup

Thank you so much for your support. Due to demand we are now offering a pickup service from our gate at 92 Neudorf Road.

1. Place your order online
www.neudorfblack.co.nz
2. Select the delivery option for local pickup.
3. We will be in touch re: pickup time.

Easy. Safe. Convenient.



New: Black Garlic Essence is now available, and the easiest way to get healthy black garlic goodness into your daily life.

**NEUDORF
BLACK**
New Zealand Fine Foods

CRUX
ADVICE & ACCOUNTING

Nathan Silcock
Director

M 021 154 1333
P 03 539 0645
E nathan@cruxadvice.co.nz
PO Box 494
Nelson 7040



Country Kids is a Community centre situated in Upper Moutere. We are looking for a **Minutes Secretary** to join our fun vibrant team.

The job entails minute taking at board meetings and distribution of minutes via email to board members. Please contact Nickie at Country Kids for further details. 035432819

Journeys of Discovery

MAY / JUNE 2020



WHAT'S BEEN HAPPENING...

Online challenges & on site ones too!

It's been all go for the WIO team, using our collective creative powers to find new ways to support our community within whatever restrictions have been imposed! The online challenges proved so popular with our Go Wild enthusiasts that we ran a second week – these are all on our website for you to access. Our teams quickly developed the ability to deliver our secondary programmes as 'distance learning' and enjoyed the ability to keep connected with students once any technical hurdles had been overcome. Jackets & tents have been cleaned, the vans are spic & span, we're putting a fresh lick of paint on our admin buildings, an obstacle course is being built & new recipes have been developed. We are looking forward to welcoming students back on site from May 25th - with hand sanitiser at the ready! To have a go at the online challenges visit www.wio.org.nz/go-wild-at-home/

WHAT'S COMING UP...

NEW! Predator Control & Conservation Programme

We are over the moon to be delivering this timely new programme as part of the Trades Academy Programmes we offer to Secondary Students, which will focus on practical strategies used to help protect our biodiversity. Students will have the opportunity to assist in already established environmental management programmes – an ideal way to learn while contributing to some important community initiatives at the same time! We hope to work alongside many existing community conservation groups and national organisations such as the Tasman Environment Trust, Tasman Bay Guardians, Takaka Hill Biodiversity Group, Landcare Trust and the Department of Conservation. For any keen students out there, get in touch with your Trades Academy co-ordinator at school to find out more or visit our website: <https://www.whenuaiti.org.nz/trades-academy/>

FOCUS ON...

Our wonderful community

We have been consistently reminded over the past few weeks of the generosity and support that exists in our community. And also of the need that exists and will continue exist as the pandemic runs its course. Our focus stays on meeting community needs as they evolve. We will continue to develop programmes that will assist schools and whanau in building resilient, confident, capable and creative young people. If you have ideas to contribute we would love to hear them – get in touch via email: info@wio.org.nz

"Hapaitia te ara tika pumau ai te rangatiratanga mo nga uri whakatipu"

Foster the pathway of knowledge to strength, independence and growth for future generations.

OUTDOOR WANDERINGS...

Takaka Hill Walkway

This is a magic spot to take in the splendour of our region, with views that encompass the mountains of Kahurangi National Park, Golden Bay and Tasman Bay. There is a short loop walk through native bush, or you could venture up to the Takaka Hill summit, from where you can simply turn around, or complete the whole loop (which is approx. 3hrs). The land is protected & maintained by the QE II Trust due to its unique karst geology that gives this area the moniker of 'marble mountain'. So look out for tomos (sinkholes)! The track crosses private land, thoughtfully opened up for public access with volunteer groups managing the track - thanks for the stunning local track!



Charlie, Helen & Joni with the wood lengths donated by Philip Leith & poles from Freestyle Hops for our Obstacle Course. Thanks guys!



Protecting NZ's unique biodiversity will be a focus of the new Predator Control & Conservation Programme.

We'll see you out there!

www.wio.org.nz

Experiential Learning Inspiring Positive Change

A great job at a GREAT Price!

SUN ELECTRICAL

Phone: 03 540 2367

www.sunelectrical.co.nz

Tony: 027 3784 580
Troy: 022 080 4751

124 Aranui Rd
Mapua, Nelson 7005
sunelectrical@xtra.co.nz

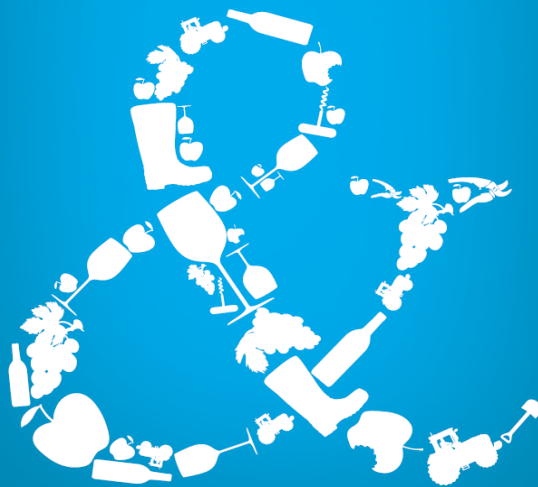
Domestic
Industrial
Commercial
Caravan WOFs
Solar Power Systems

Our highly skilled and experienced electricians can provide solutions to meet your electrical needs

- New house/shed wiring
- Rewiring
- Alterations and repairs
- Hot water elements and thermostats
- Energy saving solutions
- Power bill forensics
- Garden and outside lighting
- Solar power systems
- Caravan electrical warrants
- Sewerage and pumping systems
- Test and tag
- Switchboard upgrades and replacements
- Oven and store repairs
- Urgent breakdowns
- Industrial wiring and maintenance

www.sunelectrical.co.nz

We can help your business grow



PITT & MOORE
LAWYERS AND NOTARIES PUBLIC

Nelson 03 548 8349
Richmond 03 543 9090
www.pittandmoore.co.nz
Low3CLink

BIO LOO

THE SPECIALISTS IN COMPOSTING TOILETS

"The call of nature can be kind to Nature"

NO POWER
NO WATER
NO CHEMICALS
NO POLLUTION



ORDER NOW

These toilets are the good looking, sensible answer to human organic waste management. Environmentally friendly, they are economical easy to install and require little maintenance

Toilets are vented so there are no unpleasant odours, no need for toilet cleaners or room deodoriser. They meet all required NZ Standards and building codes and are in use by DOC and regional councils. Cheaper to purchase and install compared to other systems, right from the start. You can leave the system to work for you and in the end will have safe, composted material that can be used in your gardens.

Great for you and Better for the planet!



BIO LOO
COMPOSTING &
GREY WATER SYSTEMS

CALL US NOW ON
www.biolo.co.nz

03 526 7882
021 102 9098

The Hedge & Small Tree Pruning Company

25 years experience
Trees up to 8m
Flax removal

Need more light because
the trees have grown too high?

Local references available.

Contact Matt

021261 3501

MOWTIVATED

Lawn & Garden LTD

For all your garden needs:

- ✿ Weeding & Mulching
- ✿ Pruning & Hedge Trimming
- ✿ Push & Ride-on Mowing
- ✿ Brush Cutting
- ✿ Green Waste Removal
- ✿ Lifestyle Blocks

Something you want done not listed above?
Give us call!



Michael and Anita are a husband and wife team with a passion for providing excellent quality garden services. We are not afraid of taming wild gardens.

027 599 3304

No job too small, just give us a call. Free quotes!

Whole Barley 25 kg bags
\$19 per bag including GST.

Phone 021 454 731

or

03 526 7004



Chooks for Sale

Hylines, regular batches

\$28 at POL. Heritage breeds. Fertile eggs.

John McFadgen 021 234 4990



Water Features
Paving
Rock Work
Irrigation
General Landscaping

Michael Hardy
Ph: 021 443 908
A/H: 03 543 2555

Heine's

Cartage and Contractors

We have trucks, excavators, a dozer, a grader, and the expertise to do all your cartage, drainage, building site & foundation, roading, and subdivision work.



40 years of local knowledge

and experience in the transport and contracting industry

Phone Wayne on 03 5432 788

027 430 2725

Or call in at our workshop and office at

1455 Moutere Highway

(by the firestation)

UPPER MOUTERE

TOWN & COUNTRY VET RICHMOND



Dog Wash K9000

Coin and note operated

Open 24 hours

7 days

Caring for all creatures Great & Small

We offer a standard visit of \$97.50 which is
inclusive of mileage on Thursdays
for pre-arranged calls.



CONDITIONS APPLY -Phone (03)5441200 for appointments
and more information.

35 McGlashen Avenue, Richmond

25 Edward Street, Wakefield



www.tcvet.co.nz

Horse Cover & Gear Repairs

Horse Cover Washing

Prompt Service

Good Rates

Contact Lawrie

1350 Moutere Highway

Ph: 03 543 2234

021 208 2192



TASMAN EQUINE THERAPIES

Fiona Ramsay

Advanced Equine Body Worker

Physiotherapeutic Remedies for Horses

Sports Performance Therapy, Injury Repair/Rehab, Equine Bowen

Qualified Professional Services

027 452 3906



Groovy Paws Dog Grooming



Caroline Lusty, 115 Tarrant Rd, Mahana
Ph: 03-543 2277 027 520 1285
Email: caro.lusty@xtra.co.nz



Rat Bait Poisoning

Just a reminder about caution with rat bait...we have seen many cases of rat bait poisoning already this autumn. It's that time of year when rats and mice start migrating into buildings to get out of the rain and seek warmth so many people lay poisonous baits.

It is important to use a proper bait station which is pet-proof. It is also important to store unused bait in a secure place. It's really common to see accidental poisoning cases where bait has fallen off a shelf in the shed and pets eat it before their owners notice.

Most baits act by stopping blood from clotting, so the animal bleeds to death. Symptoms vary depending on where the bleeding is occurring:

- blood in the urine or faeces
- rapid breathing or a cough due to bleeding in the lungs
- lameness when there is bleeding into joints.
- lethargy or poor exercise tolerance when there is internal bleeding
- pale/white gums due to blood loss

Symptoms are not seen immediately. They will only appear when sufficient blood loss has occurred – this usually takes a few days.

If you suspect your pet has eaten bait, it is important to treat with an emetic to induce vomiting ASAP - preferably within 3-4 hours of ingestion. If it is longer than this, vomiting won't help and treatment must be started instead. This is a three week course of antidote followed by a blood test. Sometimes hospitalisation and a blood transfusion are necessary i.e. treatment is long and expensive!

Secondary poisoning from eating dead rats and mice is unusual as the number of rodents required to cause illness is large compared with direct ingestion of bait.

We don't see rat bait poisoning in farm animals but the dropping temperature does affect them. When it is

cold, animals eat more to maintain body temperature so if you're paying for food and supplements, your costs will increase. Food consumption can be reduced significantly by providing shelter especially from wind and rain. On properties with smaller stock numbers, providing jackets for stock will reduce energy requirements, especially for lambs and calves. Horses will eat less if they have covers on.

And on the subject of horses, make sure your horse's teeth are in tiptop shape so they can eat short grass and chew effectively to get maximum nutrition from their food. With good dental care and a warm cover, your horse is much more able to maintain condition through winter.

Tutu poisoning

We have seen a few cases of tutu poisoning resulting in cattle death. If you have livestock it is worth familiarizing yourself with the Tutu plant (and any other potentially toxic plants in your paddocks!) There are several different species of Tutu ranging from about 40cm small ones to 6m high tree Tutu. It is toxic to cattle, sheep, pigs and dogs. But poisoning usually happens when there isn't much grass and stock are forced to eat other plants. All parts of the Tutu plant are toxic.

The toxin affects mainly the nervous system and symptoms of muscle twitches, extreme excitement, convulsions, bloating and death occur within 24-48 hours of ingestion.

As there is no specific antidote, treatment is symptomatic and usually involves anti-seizure medication which is usually unsuccessful. Preventing access to Tutu is a much safer, cheaper option!



LOWCOST LAWNMOWERS

SALES • SERVICE • REPAIRS

 **Dennis Webster**
OWNER / OPERATOR 

144 Moutere Highway
E: lowcostlawnmowers@xtra.co.nz
Ph: 03-547 4038 M: 0274 071 328

WWW.LOWCOSTLAWNMOWERS.CO.NZ

 **ROTARY MOWERS** 
RIDE-ON MOWERS
HAND MOWERS
REEL MOWERS
CHAINSaws
LINE TRIMMERS
HEDGE TRIMMERS
GARDEN TOOL SHARPENING

FREE PICK-UP & DELIVERY
(CONDITIONS APPLY)

Mark Carey CONTRACTING LTD

Mark: 021 454 000
Anne: 021 454 731
Phone: (03) 526 7004
Fax: (03) 526 7014
Email: mark.carey@xtra.co.nz
28 Holdaway Road
RD2 Upper Moutere Nelson 7175



For all land development, cultivation, direct drilling, re-grassing, mulching, maize planting, hay and baleage production.

www.markcareycontracting.co.nz

 **ABEL TASMAN**
TREE SOLUTIONS

Your Local Tree Specialists

- All work fully insured
- We cover all aspects of tree care from planting and reticulation systems, to tree management and hazardous tree removal

Ph: 0223 276 164



CALL US TODAY
021 119 2239

Tasman Earthworks & Construction operate throughout the greater Nelson and Tasman region, offering a wide range of excavation and construction services.

We offer a personal and tailored service to meet your needs.

Contact us today for an estimate for your next project.

• info@tasmanearthworks.co.nz
• www.tasmanearthworks.co.nz

 www.facebook.com/tasmanearthworks
 www.instagram.com/tasmanearthworks

Endurance spraying

All types of weed spraying
Gorse and Brushweed
Control

Commercial • Residential
Forestry Road Spraying
Moss treatment for lawns,
concrete areas and decks.



Contact Pete Hughes
021-194 2654 A/H 03 544 2654
Growsafe certified •
Approved Handler



Harcourts

MyMove Tasman Property Management

Protecting your investment & Maximising your return.....

- Sensible rates without compromise
- We look after your property as if it were our own
- Also covering Richmond & Motueka

Call Suzie Dixon 022 384 9791 or Amanda James 027 472 1960
www.mymove.co.nz
 Licensed Agent REAA 2008



Friendly * Professional * Stress-free

Full & Part Time Lets Managed

Mapua Based Managers

A Friendly & Professional Service

Phone Sian 0272 968 345
 Email sian.potts@gmail.com
www.mapuaholidayhomes.co.nz

Rod Dohrman Property Maintenance

- Weed-eating & lawn mowing
- Garden clearance & upkeep
- Hedge trimming
- All general indoor & outdoor maintenance
- Long term contracts

Call Rod on 0274 333 048
 or email rod.dohrman@xtra.co.nz



Rod Dohrman & David Lawrence

rod.davidupcycle@outlook.com

THE HANDYMEN

Kitchen Removals - Cabin & Shed Kit-Set Construction
 Carpentry - Decks - Gates - Fences - Walls
 Painting - Minor Renovations

Rod Dohrman 027 433 3048
 David Lawrence 027 235 4222



JOHN BUCHANAN
027 3099920

QUALIFIED BUILDER

New homes, renovations, decks, fencing.
 Give me a call to discuss your project.

Licensed Building Practitioner



JERRY GOODWIN
MANAGING DIRECTOR

021 140 8077
ntconstruction@xtra.co.nz
www.nelsonandtasman.co.nz

All Building work • New Homes • Renovations • Sleepouts • Garages

Value your time? Me too. Working on your business nights and weekends and want your time back, this is where we can help.

Call me today for a confidential chat.

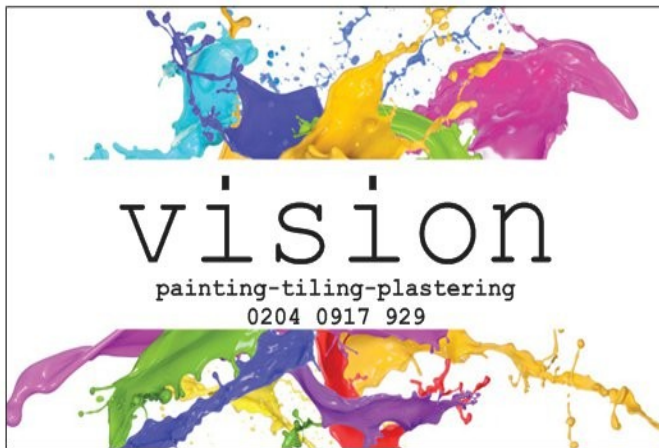


- Offering full accounts management
- Xero one on one or group training
- Payroll, GST, FBT
- Accounting, Taxation & Consulting
- Preparation of monthly reports
- Cashflow reporting
- Specialising in small to medium businesses



Leah Keown
Business Services
 027 337 6029
www.lkadmin.co.nz

The Seamless link between you and your accountant



PGG Wrightson
Real Estate

Doug Smith
Licence No. 20010862
Rural/Lifestyle Real Estate Consultant

douglasjcsmith@pggwrightson.co.nz

M 027 543 2280
H 03 543 2280
F 03 541 0903

PGG Wrightson Real Estate Ltd
Real Estate Agent, REAA 2008
8A Gladstone Road, Richmond 7040
PO Box 3008, Richmond, Nelson
New Zealand
www.pggwre.co.nz

Helping grow the country

**R
C
R** Residential
Commercial
Rural **CLEANERS**

Available for
• Residential
• Rural
• Holiday homes
• Commercial Cleaning

-Laundry service -Carpet cleaning
-Lawn mowing -Upholstery cleaning

Holdaway Road
Business 03 526 7784
Pauline 021 029 55 490
Andre 027 686 1363
rcrcleaners@gmail.com

architecture studio | mapua

- Sustainability
- Innovation
- Craftmanship

Simone Wenk
Reg. Architect (Germany), LBP Design 2 (NZ)

03 540 3282 / 021 1049 039
simonewenk@xtra.co.nz

Shed 4, Mapua Wharf
www.architecturemapua.co.nz

THE BUILDING CONSENT GUY
FOR THOSE IMPORTANT LITTLE JOBS
EST. 2020

We will advise and help you lesson your exposure to compliance costs and lost time by providing you and New Zealand Councils with a complete and compliant set of documentation.

We can help you with those important building projects like: Pole Sheds, Swimming Pools, Woodburners, Carports, Tiled showers and many more.

Contact us today on:

Ph: 03 927 3759
Mob: 021 994 750
craig@thebuildingconsentguy.com
www.thebuildingconsentguy.com

SUMMIT



SUMMIT

Sharon De Jong

Sales Manager

027 320 2196

sharon.dejong@summit.co.nz

102 High Street

Motueka

03 528 4001

summit.co.nz

Licensed REAA 2008

Real Potential



Love Your Space

Cost Effective Ideas

Action Plans for Real Change

Interior Design & Renovations

Realistic Advice

Floor Plans ♥ House Plans

De-Clutter ♥ Re-Style ♥ Move On

Styling & Staging

Rooms ♥ Homes ♥ Businesses

Hilary Goodwin


0274 612800

Hilary@realpotential.co.nz

R.T.L. CONTRACTING
— 027 5432 016 —

A wealth of knowledge, equipment, and experience.

- SUB DIVISIONS
 - LAND CLEARING
 - CONTOURING
 - ROADING
 - MULCHING
 - DAMS
 - TS14 SCRAPERS
 - DIGGERS 2.5T to 30T
 - TRACTORS
 - TIPPING TRAILERS
 - SOWING
 - CULTIVATING
 - AIR SEEDER
- Russell 027 5432 016***




**COUNTRY
CUTS**

HAIRDRESSING


CALL TO ARRANGE AN APPOINTMENT
(03) 5432297 • 027 472 8863

**Simplicity
Funerals**

Simply respectful. Simply affordable.




ANNA LOACH
Manager & Funeral Director



ANDREA BABINGTON
Funeral Director

Why Choose Us?

Simple really ...
... we excel in honouring,
celebrating and memorialising
your loved one together.

 NELSON & TASMAN WIDE, WE'RE PART OF YOUR COMMUNITY

69 Haven Road, Nelson | Phone 03 539 0066
www.simplicity.co.nz

We understand that everyone is going through tough times
and we sincerely hope you and your families are keeping safe and well.

We are still here to support you with your legal requirements.

Our team remains fully functional and are well set up to work remotely and assist with your legal matters including refinancing, debt consolidation, residential and commercial conveyancing, Wills and Enduring Powers of Attorney.

Although working through uncharted waters we aim to adapt to each situation with professionalism and compassion while maintaining protocols to ensure the health and safety of our clients and our team.

Give us a call and we can discuss the best options for your situation.

THE LEGAL HOUSE

Josh Boyce – Principal – 021 393 187

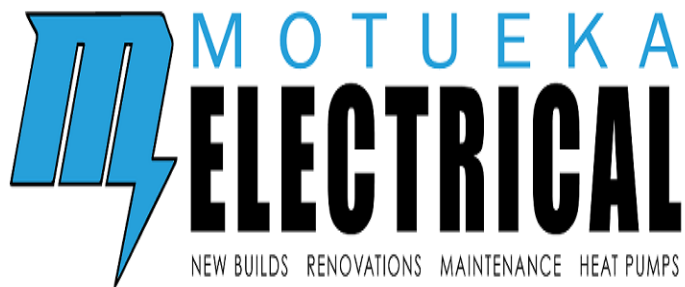
Robert Styles – Lawyer – 021 446 106

Pauline Scott – Senior Registered Legal Executive – 027 440 5244

Yvonne Watson – Senior Registered Legal Executive – 027 327 4533

Level 1, 281 Trafalgar Street, Nelson
PO Box 332, Nelson 7040

www.thelegalhouse.co.nz



LUUK HERMENS

027 588 5774

03 528 4488

motuekaelectrical@mail.com

HEAT PUMP SUPPLIER & ACCREDITED INSTALLER



Labour

Damien O'Connor

MP for West Coast-Tasman

Minister of Agriculture, Biosecurity and Food Safety

Minister for Rural Communities

Minister of State for Trade and Export Growth

234 High St, Motueka | phone 03 528 8190

208A Palmerston St, Westport | phone 03 789 5481

181 Tainui St, Greymouth | phone 03 768 7189

Freephone 0800 326 436



damienoconnormp



Authorised by Hon Damien O'Connor, Parliament Buildings, Wellington

**EVERY FUEL
PURCHASE
EARNS
REWARDS
FOR OUR
LOCAL SCHOOLS**



**PLEASE NOTE WE WILL BE CONTINUING
WITH OUR UNMANNED FORECOURT
PLEASE USE THE 24/7 CARD MACHINE
FOR FUEL PURCHASES**

mouteremotors

Ph 543 2707



Keeping you in the game since 2002

Spacious, airy practice
Health guidelines adhered to
Face-to-face or Telehealth
Referrals and new patients
Call for more information

Monday-Saturday
03 544 4554
64 Oxford St Richmond

Find us on 

tasmanbaychiropractic.co.nz



**Dorothea
Tebbenhoff**
Acupuncture



Licensed Acupuncturist
MAcNZ, Acc Provider

25 Greenwood St, Motueka

03 528 6239

www.tasmanacupuncture.co.nz

MOUTERE MASSAGE

FIONA RAMSAY

QUALIFIED AND PROFESSIONAL

***SPORTS *DEEP TISSUE *INJURY REPAIR**
***FOOT REFLEXOLOGY *BOWEN THERAPY**

20 WILSON ROAD
UPPER MOUTERE

PH/TXT 027 452 3906

MON, TUES, WED & FRI



LOCAL MIDWIFE CLARE SPRATT

**Ring Clare for friendly professional maternity care
and advice.**



*I offer full 24 hr maternity care from conception through to
6 weeks post natal, home/hospital and water births,
birthing pool available, natural remedies,
free pregnancy testing, breastfeeding support and much more.*

T: 03 526 7764
M: 0273324929

E: midwifeclarespratt@me.com



green world health
& Lifestyle

**Sole Supplier of
Dr. Hauschka
Products
in Motueka.**



Open 7 Days



**177 High Street, Motueka
Ph: 03 528 7262**

E: greenworldhealthandlifestyle@gmail.com

The Stump Party

In response to seeing the infamous zig zag of Gardner Valley Road being closed off and traffic using the new piece of road down onto the Moutere Highway, Jeanette announced it needed some kind of acknowledgement, a zigzag appreciation/remembrance, homage even, to honour the stump, and pay tribute to that piece of road that was familiar to so many, tho perhaps loved and hated in equal measure.



How many stories could that stump tell? How many vehicles kissed it as they passed? Our very own Blarney stone. The bane of many truck drivers

wheezing up the hill, and in the early days the silent sentinel watching Hewetson's sheep being herded past, until traffic got too heavy making that practice safe no more. What kind of tree had it been?

A picnic was arranged, with 5 of us enjoying local wines and cheeses as we sat on the grass with the stump at our backs, looking out over that glorious view of Mt Arthur. Toasts were made in the dying sun, and promises to do it again, before we all headed off back home on our bikes, or by foot, enjoying the temporary quietude of our roads under lockdown level 2.





Tile It

Custom Tiling
Waterproofing
Wood Flooring

Tom
021-0485649
03-5432644



TASMAN BAY MEDIA
Training and Marketing Specialists

Contact us to find out how we can expand your TRAINING & MARKETING with video productions like this!



Office 03 5432 806
Kate 027 22 67 118
tasmanbaymedia.co.nz



CARAVAN RENTAL

Local business offering great value, good quality, well equipped UK caravans available for short and long term rental. Can be delivered and set up to a campsitelocation of your choice. Short term holiday rates from \$50 a day. Long term static hire from \$100 pw.

www.kinacampers.co.nz

Email: info@kinacampers.co.nz

MAPUA AUTO CENTRE
"YOUR AUTOMOTIVE SPECIALIST"



Fully Equipped Automotive Workshop

All Makes & Models

6 Courtesy Cars

W.O.F.



20 WARREN PL, MAPUA
PH 03 540 2180
mapuaauto@mapua.biz
www.mapua.biz/mapuaauto




LEIGH BRIARS ARCHITECTURE

03 543 2667
021 215 0946
briars@ts.co.nz
RD 2 Upper Moutere
Nelson 7175




Sarau Winter Sale

Second-Hand Books
Pre-Loved Clothing & Toys
and a Cosy Cafe



29th & 30th August (TBC)
Saturday & Sunday

11am - 3pm

Moutere Hills Community Centre

Trade and Professional Services List

Please support our advertisers

What	Who	Contact
Arborist	The Hedge & Small Tree Pruning Company	021 261 3501
Arborist	Abel Tasman Tree Solutions	022 3276 164
Accounting Bookkeeping	Crux Advice & Accounting Ltd	03 539 0645 Mob: 021 154 1333
Accounting Bookkeeping	Lisa Keown Business Services	027 337 6029
Acupuncture	Dorothea Tebbenhoff	03 528 6239
Architectural Designer	Leigh Briars	021 215 0946 AH: 03 543 2667
Architectural Designer	Simone Wenk	021 1049 039 AH: 03 540 3282
Builder	Andrew Eggers	027 446 0739 AH: 03 543 2757
Builder	Jason Frater	021 743 497 AH: 03 528 0337
Builder	NTC	021 140 8077
Builder	John Buchanan	027 309 9920
Building Consents	The Building Consent Guy	021 994 750
Caravans	Kina Campers	www.kinacampers.co.nz
Chiropractors	Tasman Bay Chiropractic	03 544 4554
Cleaning	Andre, RCR Cleaners	027 686 1363 AH: 03 526 7784
Contractors	RTL Contracting	027 5432 016
Contractors	Tasman Bay Earthworks & Construction	021 119 2239
Contractors & Cartage	Wayne, Heine	027 430 2725 AH: 03 543 2788
Dog grooming	Caroline Lusty, Groovy Paws	027 520 1285 AH: 03 543 2277
Drainlaying	Fiona Ramsay	027 3006422
Electrician	Luuk Hermens, Motueka Electrical	027 588 5774 AH: 03 528 4488
Electrician	Tony, Sun Electrical	03 540 2367 Mob: 027 3784 580
Garlic	Neudorf Black	neudorfblack.co.nz
Hairdresser	Country Cuts	027 472 8863 AH: 03 543 2297
Hay and baleage production	Mark Carey Contracting	021 454 000 AH: 03 526 7004
Health & Wellbeing	Melissa Potter, The Art of Touch	021 136 8439
Health & Wellbeing	Greenworld Health & Lifestyle	03 528 7262
Horse cover/gear repairs	Lawrie	03 543 2234 Mob: 021 208 2192
Horse therapy	Tasman Equine Therapies	027 452 3906
Landscaping	Mow-tivated Lawn & Garden	027 599 3304
Landscaping	Michael Hardy, Hardy Landscapes	021 443 908 AH: 03 543 2555
Lawnmowers	Lowcost Lawnmowers	0274 071 328
Lawyer Legal Services	Pitt & Moore	03 543 9090
Lawyer Legal Services	The Legal House - Yvonne Watson	03 548 7839
Marketing & Media	Tasman Bay Media	03 5432 806
Massage	Fiona Ramsay	027 452 3906
Mechanic	Mapua Auto Centre	03 540 2180
Mechanic	Moutere Motors	03 543 2707
Midwife	Clare Spratt	027 332 4929 AH: 03 526 7764
MP	Damien O'Connor, Labour Party	0800 DAMIEN
Painter	Glen, Vision Painting Tiling & Plastering	020 4091 7929
Play Group	Renee	027 293 7326
Plumber	Alex Bint, My Personal Plumber	027 542 4329 AH: 0800 444 343
Pre-loved clothing	Brook Street Lounge	151 Aranui Road, Mapua
Property Maintenance	Rod Dohrman	027 433 3048
Property Management	Sian Potts Harcourts	0272 968 345
Pub/Restaurant	The Moutere Inn	03 543 2759
Real Estate	Harcourts Mapua	03 540 3425
Real Estate	Sharon deJong, Summit Real Estate	027 3202 196
Real Estate	PGG Wrightson Doug Smith	027 543 2280
Recreation Centre	Moutere Hills Community Centre	03 543 2516
Social Club	Beryl or Shirley	03 543 2122/03 543 2438
Spraying	Pete Hughes, Endurance Spraying	021 194 2654
Tiling	Tile it (Tom)	021 048 5649 AH: 03 5432644
Vet	Town & Country Vet	03 544 1200
Water	Water Filtration & Pumps Frans	0275 281 366
Water	Complete Water Solutions	03 528 0040
Winery	Gravity Winery Cellar Door	03 543 2817
Youth Group	Tessa Werner	022 101 2276