

# The Grapevine

## MOUTERE HILLS COMMUNITY NEWS

### Charity Begins at Home

#### Inside this issue:

Community	1-9
Recreation	10
Arts and Crafts	12
Moutere Youth	14
Food	17
Nelson Botanical Society Field Trip	18
Life on the Land	21-25
Health & Wellbeing	26
Trade & Services directory	30



#### LOCAL LIVES

Freemasons Athol Allan (left) and Dave Stenning — local men involved with a major South Island charity event

#### Special points of interest:

Every Friday Sharing table MHCC

9 September: Rangers FC quiz night (page 14)

Upper Moutere Tennis Club open days 16th & 23rd September (page 10)

20 September Moutere Hills Residents Assoc AGM (page 8)

1st October Pump Track/ Jump Track Working Bee



There are two men living in the Moutere who are prominent and enthusiastic Freemasons. Both Dave Stenning and Athol Allan hold senior positions in the South Island District of English Masonry.

2017 is an important year which marks the tercentenary (300 years) since the formation of the United Grand Lodge of England and this is being celebrated in London at the end of October.

However the English lodges in New Zealand are also acknowledging this momentous occasion with their own charity project.

Over 10,000 small teddy bears have

been purchased and are being distributed throughout the South Island to Emergency Services, with the intention that they should be given to any child who is in need of comfort following a traumatic event. There should be a teddy in every Ambulance, Fire Service vehicle and A & E facility waiting to be cuddled by a youngster who is feeling sad. The local distribution started with a visit to the Upper Moutere Volunteer Fire Service, where Fire Chief, Fred Ewers and some of his crew accepted a quantity to place in the cab of the Fire Truck.

*Continued on page 3*

## PLACING AN ADVERTISEMENT

Thank you for advertising in the Grapevine—you help us cover the cost of producing and delivering this free community newsletter each month.

**The deadline for each issue is the 15th of the month.**

Please email your print-ready ad to—[umograpevine@hotmail.com](mailto:umograpevine@hotmail.com) or provide paper based, print-ready copy to Moutere Motors.

**The following prices apply for advertising:**

- ∞ Births, marriages, deaths and giveaway notices: free
- ∞ Business card size advertisement: \$12
- ∞ 1/4 page advertisement: \$25
- ∞ 1/2 page advertisement: \$50
- ∞ Full page advertisement: \$95 (if space available).

Please deposit payment (and identify it with your name) to our account: NBS 03 1354 0229034 16.

### **Sending us editorial items**

We warmly welcome editorial contributions to the Grapevine from all residents in the Moutere and Tasman regions. You make the newsletter an interesting read!

There is no cost to having your articles published but if you are telling the community about a commercial or fundraising venture, we do appreciate a small donation to help us cover our costs—see above for bank details.

**Archived coloured copies of the Grapevine are available at [www.mouterehills.org.nz/community/the-grapevine](http://www.mouterehills.org.nz/community/the-grapevine) courtesy of the Moutere Hills Community Centre Staff.**

**Grapevine circulation is 1300 copies.** This issue has been constructed by volunteers: Miriam Lynch, Tanya Doty, Beverley Sellers, Sharon Beuke, Avril Stephens and Heather Eggers.

## MAKE AN IMPACT LOCALLY

Please remember to support our advertisers. With their support, we deliver the Grapevine to 1300 households in the Moutere Hills area.

Lots of them are locals too and what better way is there to get to know your neighbours?



## Have You Seen Us In Colour?

Previous issues of the Grapevine  
can be viewed in glorious colour on the  
Moutere Hills Community Centre website  
<http://www.mouterehills.org.nz/community/the-grapevine/>





**Doug Smith**  
Licence No. 20010862  
Rural/Lifestyle Real Estate Consultant

[douglasjcsmith@pggwrightson.co.nz](mailto:douglasjcsmith@pggwrightson.co.nz)  
M 027 543 2280  
H 03 543 2280  
F 03 541 0903



PGG Wrightson Real Estate Ltd  
Real Estate Agent, REAA 2008  
8A Gladstone Road, Richmond 7040  
PO Box 3008, Richmond, Nelson  
New Zealand  
[www.pggwre.co.nz](http://www.pggwre.co.nz)  
*Helping grow the country*



# Tile It

Custom Tiling  
Waterproofing  
Wood Flooring

**Tom**  
**021-0485649**  
**03-5432644**



*Continued from front page*

Usually the Master of each individual lodge selects a charity each year for which funds are raised and allocated. However this year, being a special one, the charity funds have been combined throughout the South Island to make this significant donation.

Athol and Dave are both members of the Southern Star Lodge in Nelson. This is the oldest Masonic lodge in New Zealand, having been formed in 1853. Members have been meeting in the now historic building in Collingwood Street since 1885.

There are also other forms of lodge meetings, one of which is purely for the pleasure of joining with friends and partners for a social gathering and evening meal, four times a year.

If you have family connections with Freemasonry, or just curious to find out what it's all about, a contact with either of these men would be most welcome. Athol can often be found at the Moutere Store enjoying a coffee and loves to chat, or email Dave at [dave@stenning.co.nz](mailto:dave@stenning.co.nz)



### Upper Moutere Volunteer Fire Brigade

Callouts from 16th July – 15th Aug

18/7 House fire, College St  
Motueka



27/7 Animal rescue, Wilson Rd/McKay  
Rd Lower Moutere

7/8 Garage fire, Old Coach Road

MOTUEKA RUDOLF STEINER SCHOOL

# Spring Fair

Celebrate Spring with us

School Farm 165 Robinson Road, Motueka

Sunday 10 September 2017. 10am-4pm

A unique school fair experience for young and old

fairs@motueka.steiner.school.nz    www.motueka.steiner.school.nz



# YOUR LOCAL TALL POPPY

**Market Commentary:** Demand for houses and lifestyle blocks in the Upper Moutere / Mapua area is still very strong with an average sale price over RV of 39% in the last 6 months (Feb - July). Buyers are still looking for that special home and the dream of owning some land or having a bit space is even more appealing now than a couple of years ago. There is definitely a shortage of housing stock on the whole and with buyers out there waiting for their ideal property and prices still holding, if you were thinking of selling, I believe now is a good time, particularly with Spring on its way.

\* The data in this report is sourced through REINZ including residential and rural sales recorded by all agencies in the Upper Moutere, Mahana, Mapua, Ruby Bay area that return sales statistics to REINZ.



## Local Property Insights

Upper Moutere, Mahana, Mapua & Ruby Bay

<b>Sales</b> = 47	<b>Average RV =</b> \$779,782. <sup>60</sup>	<b>Sale / Valuation Average =</b> 39%
<b>Highest Sale Price =</b> \$3,550,000	<b>Average Sale Price =</b> \$1,037,380	<b>Lowest Sale Price =</b> \$510,000

**CONTACT DEBBIE WATSON YOUR LOCAL REAL ESTATE AGENT FOR A NO OBLIGATION APPRAISAL**

**P** 03 543 2629 | **M** 021 462 629

**E** debbie.watson@tallpoppy.co.nz | **W** tallpoppy.co.nz



BULSARA T/A TALL POPPY LICENSED UNDER REAA 2008

NELSON TASMAN LICENCE OWNER



## FI-GLASS WARRIOR

### \$9,900

1986, 18 foot, canopy and travel cover, 120 HP V4 and 15 HP AUX, scallop dredge and rods, ski pole and sea biscuit, overhauled trailer, lifejackets, longline and buoys.

**Phone Nick 027 251 9130**



# MOUTERE HILLS COMMUNITY CENTRE



## Dear Community

*It is great to see new initiatives starting which are community lead. Congratulations to the Kai Collective who have produced some fantastic meals, which are located in a freezer down here at the Community Centre, and are available for anyone in need of a little break in the form of a home cooked meal. A community Sharing Table has also been started by Marijke. Every Friday it will be set up in the main entry of the Community Centre, and is a place that you can share produce and other home grown goodies.*

*We also have some fantastic community events coming up that are raising money for groups within our community. There is the Country Kids Wild Wild West Party, Upper Moutere School Quiz Night, Rangers Rugby Quiz Night and our own Jingo Night. More details about these are available on our website [www.mouterehills.org.nz](http://www.mouterehills.org.nz)*

Thanks Katrina



## SOCIAL VOLLEYBALL for beginners

Thursday's 8:00 - 9:30pm

\$3 Per Session

Want to try out the fun filled, fitness building, game of Volleyball!! Just come along on the night and join in the fun.



## ZUU Chimps

Tuesday's 3:45 - 4:15pm

For Children aged 5 years+

\$3 Per Session

ZUU Chimps is fun, affordable, prevents injuries, increases mobility and is great training for all sports.



## JINGO IS MUSICAL BINGO

Friday 20<sup>TH</sup> October  
Moutere Hills Community Centre  
\$15 PER PERSON



### Jingo Kicks Off at 7.30pm

Bar Opens at 6.00pm. Light meals available from our kitchen from 6.00pm – 9.00pm

Picture old school bingo with the numbers replaced with snippets of your favourite tunes & the song titles. Bring a team or come on your own

Price includes your Jingo cards and nibbles. Some great prizes to be won!!

Book your table now by calling us at the Community Centre—5432516

## SHARING TABLE IN THE MOUTERE

Have you seen the new Sharing Table here at Moutere Hills Community Centre. Every Friday from 9am—5pm there will be a "sharing table" set up near the main entrance. A sharing table is a drop off point where produce is freely given and received by the community. You can exchange fruit, vegetables, seedlings, plants and preserves.

For further details you are welcome to contact the organiser, Marijke on 5432130



Phone: 543 2516

Email: [enquiries@mouterehills.org.nz](mailto:enquiries@mouterehills.org.nz)

Website: [www.mouterehills.org.nz](http://www.mouterehills.org.nz)



# Nelson Tasman Civil Defence Emergency Management Group

## Plan Review 2017

Nelson Tasman Civil Defence Emergency Management (CDEM) has reviewed its group plan and is now calling for public feedback on the revised draft.

The vision of the group is a resilient Nelson Tasman community, and we are keen to engage our communities around the region in understanding our hazards and considering how we will respond to them.

The plan, reviewed every five years, identifies the region's hazards and risks and how Civil Defence will effectively manage these across the four key activities of risk reduction, readiness, response and recovery. It has been updated by the Nelson Tasman CDEM Group, a partnership between Nelson City and Tasman District Councils, and its key partner agencies who are involved in the delivery of emergency management.

The main sections of the plan include:

- An assessment of the region's hazards and risks
- A description of the group's plans to prepare for emergency events and ongoing recovery
- An outline of operational arrangements for responding to emergency events
- The group's plans to ensure a strategic approach to recovery
- The group's structure, financing and decision-making processes
- How the group monitors and evaluates itself

Once approved, this plan will replace the previous group plan 2012 and will remain in effect until reviewed and/or amended by the group, for a period of no more than five years.

The plan takes account of learnings from significant emergencies around New Zealand in recent years, including flood and earthquake events that have affected our own region. Changes from the current plan approved in 2012 include greater emphasis on planning for recovery and the role of communities towards this, transitional periods and transitional powers available during a transition period, boosting the role of the Lifeline Utilities group, and providing further options to support outlying communities in the event of civil defence events. The primary goals for the CDEM Group for the next five years have also been updated to include;

Building strong, safe, resilient communities

Reducing the risk of hazards

Enhancing response and recovery Capability

All feedback on the draft group plan is encouraged however we are also interested in your thoughts on the following areas;

- Have we got the right emphasis in our plans
- Are you aware of the natural hazards in your community?
- What information do you need during large emergency events (such as floods and earthquake) and
- How do you access this information?
- Is there one thing you think we could be doing differently?

***Feedback is open from 4 August 2017 – 4pm 4 September 2017.***

[Feedback can be made on the Nelson City Council website.](#)

[Contact Us](#)

- **General Inquiries** +64 3 546 9500 (Nelson Tasman Emergency Management Office)
- **After hours** +64 3 546 0200
- **Motueka** +64 3 528 2022
- **Richmond** +64 3 543 8400





Early Childhood Education & Care

## A Shout Out To All You Dads Out There!!

B, rode his bike around the bike track while chatting to me (M).

B: I've got a motorbike - its really fast!!

M: I've got a motorbike too. How many wheels has your motorbike got?

B: (Showing me fingers) 1, 2, 3, 4 wheels!

M: Mine has 2 wheels.

B: What happened to the other wheels?

M: It's only got 2 - that's all it came with!

B: Oh!! (thinks).. My motorbike's faster than yours!

M: Probably, I haven't been on my motorbike for a while - its broken!

B: What's broken?

M: It won't start properly.

B: Does it go nya..nya..pla nya..nya..pla!??

M: Yeah, a bit like that!

B: You can put it in your car and bring it to my house and my Dad will fix it!

M: Oh, thankyou Blake, but my Bob can fix it.

B: Who's Bob, is he your Dad?

M: No he's not my Dad, he's my partner..um, my man!

B: Oh! (thinks). Can he fix it?

M: Yeah.

B: Then you can bring your motorbike to my house and we can have a race!

10 minutes later a chain fell off one of the bikes.

B: We can put it in my car and I'll take it home - my Dad can fix it!!

C: My Dad can fix it, he's an elec tric trician!!

M: (I did manage to fix it without any Dad's help...just!!)

Dads, in the eyes of your pre schoolers, you are awesome and you can fix anything!!!

**YOU ROCK DADS!!**

# Mapua Playcentre

We're running a series of family profiles over the coming months to introduce some of our playcentre families and what they love about playcentre. This is from Mel and her son James.

"James is about to turn five and head off to school. When I look back he couldn't walk when we first started play centre at the tender age of 14 months. Playcentre has assisted him in developing his confidence, exploring in a safe environment whilst teaching him the social skills of playing with others. The 'mess' and fun activities (gym visits, baking carpentry, painting, sandpit) all stay there too!

As a new mum to Mapua it was also my first social outing to the area and I have developed some strong friendships as a result. Both James and I will miss our play centre sessions but as a parent I am happy knowing he has learned many valuable skills which he will now take to school."

---

Our new veranda blinds are now up and look very smart. A big thank you to Pub Charity for their contribution of \$750 towards the blinds.

Playcentres are Ministry of Education-registered, the difference being parents' input into their child's learning, development and fun. At Playcentre, we follow the Early Childhood Curriculum 'Te Whariki' which is unique to New Zealand with an emphasis of child-initiated play and parent education. It's a great way to really have hands-on play with your child, while you also get the benefit of having social interaction with other adults.

Mapua Playcentre has been a prominent place for families in the Mapua community for over 60 years. We have a qualified supervisor on each session and we love having visitors so please feel welcome to drop in at any time and find out what Kiwi families have been embracing for generations.

We offer a term of free sessions for first time families and all children under two are free.

The

**Moutere Hills Residents Association**

would like to invite you to their

## **Annual General Meeting**

**Wednesday 20 September 2017, 7:00 pm**  
**Moutere Hills Community Centre**

***Have your say on local issues.***

### ***Meet with***

- **Ward Councillors**
- **Council Representatives**
- **MP Damien O'Connor**

***Bar open - Nibbles provided.***

***All members and visitors welcome!***

For further details visit our website [www.mhra.org.nz](http://www.mhra.org.nz)  
or write to us at [secretary@mhra.org.nz](mailto:secretary@mhra.org.nz)

  
andrew Eggers  
builders limited



Call us for a quote or estimate on  
your next building project

**0274 460 739**



. Session times are Mondays and Fridays  
9:30am – 12 noon during school terms. You  
can find us at 84 Aranui Road (behind the  
tennis courts by the scout den)

\* Alternatively, please contact us with  
any questions you have either by  
phone: Liz on 021998899,  
\* email: [mapuaplaycentre@gmail.com](mailto:mapuaplaycentre@gmail.com) or  
find us on Facebook.



**A date for your diary: Tuesday  
31st Oct 5-7pm**

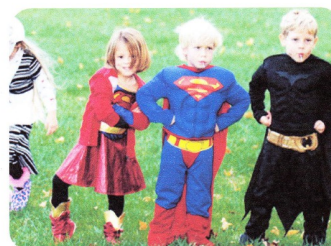
## **Mapua Community Costume Carnival :**

Hills Community Church is holding its annual Costume Carnival at Aranui Park, Mapua on Monday 31<sup>st</sup> of October. The carnival has been running for more than ten years and is a highlight in the calendar for families in Mapua and the surrounding districts. It is run as a free gift to the community, a positive trick-or-treating alternative at Halloween. Children, (and adults too if they like) are encouraged to come dressed as fairies, superheroes, princesses, animals, All Blacks, etc. (No scary costumes please). Prizes are given for the most creative costume to boys and girls in each age group (preschool, primary and teenagers, and adults). There will be a range of fun-filled games and activities to participate in. Bring your children for a fabulous, fright-free evening of old fashioned games, sled rides, jumping on the bouncy castle, and a free sausage sizzle. Each time you have a go; earn a silver token to swap at the prize tent. <http://www.hillscommunitychurch.org.nz/>



Hills Community Church Presents

# **Mapua's Costume Carnival**



An Old Fashioned Carnival  
with  
Games  
Bouncy Castles  
Trailer Rides  
and Sausage Sizzle  
**EVERYTHING IS FREE**

**5-7pm Tuesday 31st October**

Aranui Park and the Hills Community Church

A SAFE ALTERNATIVE TO  
TRADITIONAL "TRICK OR TREATING"

**Prizes for best costumes - Please avoid scary costumes**

Proudly supported by



The Snowden Trust



## **MAPUA COUNTRY STORE** YOUR FRESH LOCAL MARKET

**Opening Hours: Mon - Fri: 8.30am to 5.30pm • Weekend: 9am to 5pm**  
**Open 7 days a week to bring you the very best produce and products**

*New café opening*  *here at The Store*

### **THE RABBIT IN THE ROSE**

**FRESH FRUIT & VEGGIES ★ DELI PRODUCTS ★ GIFT IDEAS ★ LOCAL CHEESES & MEATS ★ FRESH FLOWERS ★ PANTRY STAPLES**


**QUALITY PET FOOD & MORE...**

**★ Local beer, cider and wines plus wines from around the world ★**  
**Look out for our regular in-store tastings and cooking demonstrations**

151 Aranui Road, Mapua (opposite Mapua School)

[www.mapuacountrystore.co.nz](http://www.mapuacountrystore.co.nz)

P: 03 540 2581

 MapuaCountryStore

E: [info@mapuacountrystore.co.nz](mailto:info@mapuacountrystore.co.nz)

 MapuaCountryStore

*Shop local × Eat Local × Enjoy Local*





## Upper Moutere Tennis Club

### Upper Moutere Tennis FREE Open Day for all students in the local area.

**Saturday, 23rd September**

(Postponement Date: Sunday, 24th September)

See below for your time slot:



1pm Upper Moutere & Appleby Schools  
2pm Lower Moutere School  
3pm Tasman, Dovedale, Tasman Bay Christian, Mahana & Ngatimoti Schools

Come along for a FREE hour of coaching at your local club, Upper Moutere.

Games, spot prizes and hitting on the ball machine.

A Wilson prize pack including a racquet and balls must be won by someone who attends! Racquets will be provided.

No bookings required - simply turn up!

Vanessa Mairs - Head Coach Upper Moutere Tennis Club

For more info phone 022 4600 320 or email [claybrookestate@xtra.co.nz](mailto:claybrookestate@xtra.co.nz)

## MAPUA BOWLING CLUB

### THE WRITE BIAS

Spring is in the air with a sense of anticipation for the lawn bowlers of our club. With a buoyant membership a full bowling programme is on the cards and this year with a couple of exciting additions.

The two club coaches are looking forward to spending Monday afternoons with some of the children from Mapua School. This will be fun for us all and a fantastic opportunity to teach the elements of bowling to a group of young people. There is still that perception that outdoor bowls is a sport for the elderly. Sure, the older generation is able to participate but the future lies with the children and most of the top Kiwi bowlers are YOUNG! Shannon McIlroy, the Nelson-based singles world champion started to play when he was 6 years old. Mapua School, bring it on!

The second exciting opportunity is extended to all members of the Mapua, Ruby Bay and Tasman community who may have any aspect of visual impairment, slight problems right through to complete blindness. Lawn bowls is a wonderful game played by all ages and abilities and the pleasure, satisfaction and excitement a player receives from participating in the game is there for everyone.

Come and check us out at Mapua Bowling Club. You don't have to be a member of the Blind Foundation.

Bowling equipment is provided with the exception of heel-less shoes to protect the green. Coaching is available at no cost in a group situation or one-to-one. We enjoy lovely club facilities where you will be made to feel extremely welcome by all club members. We don't expect you to commit to any initial financial outlay.

If this is of interest to you and you would like to know more, please feel free to contact either of the coaches:

Sue England: 03 540 2934

Mike Turnbull: 021 08376695

We hope to enjoy your company and welcome you to our bowling green soon.

*For general information about the Bowling Club or booking the clubhouse and facilities please call President, Dave England (540 2934).*



## Upper Moutere Tennis Club

### OPEN DAY for the 2017/18 Tennis Season



**Saturday 16<sup>th</sup> September 2017  
Beginning at 1:00pm**

(rain date: Sunday, 17<sup>th</sup> September, 1:00pm)

*Join up and get court access for the new season.  
(Your old access key will be expiring.)  
Eftpos will be available on the day.*

*The Ferrick Cup competition will be held on Open Day.*

*This is a doubles event with partners randomly drawn  
for each round of play.*

*This format is ideal for players of all levels and abilities.*

*Come along and join in the fun.*

*Afternoon Tea will follow Ferrick Cup play.*

**All Newcomers Welcome !**

**See you there!**

**Any Questions?** Phone: Vanessa Mairs 5432 332, Mobile 0224600320

Registration forms are available on the Moutere Hills Community Centre website  
<http://www.mouterehills.org.nz/>  
or by email [UMOTennis@gmail.com](mailto:UMOTennis@gmail.com)



Est. 1850

# Moutere Inn

New Zealand's Oldest Pub



## What's Happening In September



### Quiz Night 7pm Thursday 14<sup>th</sup>

Come and test your brain strength against the best minds the Moutere has to offer. It's not all sheep and beer round here, sometimes it's apples and hops. Either way Lower Moutere school enjoy the money raised and we all have a thoroughly entertaining evening.



### Cigars and Whisky 7pm Thursday 28<sup>th</sup>

A small group of whisky and cigar lovers have started a regular meeting, on the last Thursday of each month. A new whisky will be introduced each month and a cigar available at cost.



### Fine Dining Evening 7pm Saturday 30<sup>th</sup>

We will be offering a relaxing evening, of fine dining, over five courses. Bookings essential check our website for menu details. \$55 per head.

### Don't Forget

1 <sup>st</sup> Thurs Folk Night	This month the 7 <sup>th</sup>
2 <sup>nd</sup> Thurs Quiz Night	This month the 14 <sup>th</sup>
4 <sup>th</sup> Thurs Cigars and Whisky	This month the 28 <sup>th</sup>

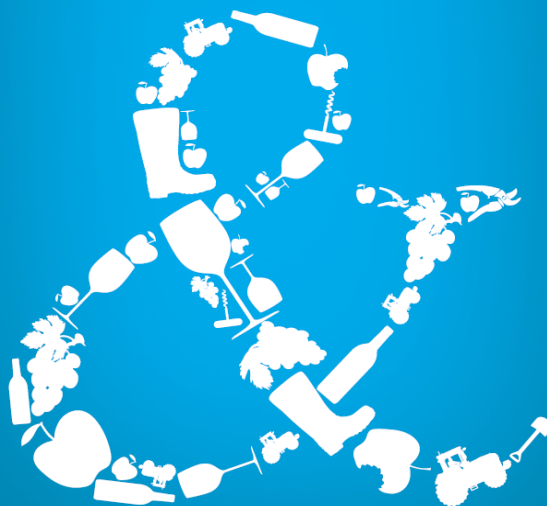
PHONE 5432 759

WWW.MOUTEREINN.CO.NZ

FACEBOOK/MOUTEREINN

1406 MOUTERE HIGHWAY, UPPER MOUTERE 7175

## We can help your business grow



**PITT & MOORE**  
LAWYERS AND NOTARIES PUBLIC

Nelson 03 548 8349  
Richmond 03 543 9090  
www.pittandmoore.co.nz  
Law360Link

affordable coffins for people and pets

## Laid Back Coffins



Tapered hexagonal 17mm ply  
from \$530 plus freight



MDF pet coffins from \$38  
plus freight



Rectangular 17mm ply from \$420  
plus freight

Contact: Steve and Liz Farmer  
EMAIL ADDRESS: [laid-backcoffins@outlook.com](mailto:laid-backcoffins@outlook.com)

Telephone: 021 140 3172  
WEBSITE: [www.facebook.com/laidbackcoffins](http://www.facebook.com/laidbackcoffins)

September 2017  
Newsletter



## Pastel Artists of New Zealand, Nelson Region

We are not alone in the world. Pastel Artists of New Zealand is a member of a much wider organization. We belong to the International Association of Pastel Societies (IAPS) which has member societies from all around the world; England, Scotland, France, China, Canada, the United States and many more. There are 71 in total. That makes for a very large representation of pastel artists using pastel paints to create some amazing pieces of art. We were fortunate to have two of our PANZ members representing us at the IAPS convention in Albuquerque, New Mexico, USA this year. They were Glenys Forbes, our Nelson Area Rep and Judith White, former President PANZ from the Taranaki region.

*We have had a few successes in our local group recently.* Congratulations to Sharon Platt who won our most recent National Pastel Online Challenge for her painting "A Good Catch." Also, many of our locals will remember Tony Allain, a former resident of the region but still a member of PANZ, now living back in England. Tony has achieved the level of Master Circle Pastelist with the International Association of Pastel Societies. This is a very high achievement and a *first* for New Zealand. Well done to our members!

### A reminder of coming events - Mark your calendar!

Impressions National Art Awards 2017 is coming to the Mapua Community Hall from 7 October to 15 October. This is for paintings (wet and dry media), drawings and original prints. The Exhibition opens at 1:00pm on Saturday, 7 October with the Awards Ceremony from 3 to 4:30pm. Starting from Sunday, 8 October, the Exhibition will be open from 9:30am to 4:30pm and entry is free. All artworks will be for sale. Hopefully you will have time to come and enjoy this national art exhibition sponsored by Impressions Picture Framers & Art Supplies retail shop in Richmond. Artists interested in entering this exhibition can contact Impressions directly by email: [impressions@actrix.co.nz](mailto:impressions@actrix.co.nz).

We welcome you to come on a Tuesday morning between 9:00am to 12:00pm at the Mapua Community

## Looking for the perfect gift? Gift the Taste of Tasman

We'll help you choose just the right item or basket for your special someone. Select from hundreds of food, skincare and gift items ... all from Nelson Tasman. We'll even wrap and ship for you ... easy!



\* CRAFT CHOCOLATE \* 30+ LOCAL CHEESES \*  
\* SKINCARE \* GIFTS \* ARTISAN FAVOURITES \*  
\* GOURMET GROCERY \* LOCAL SUPERSTARS \*

Shed 4 - Mapua Wharf 021 732 752  
Open 7 Days [www.ketetasman.com](http://www.ketetasman.com)

## A great job at a GREAT Price!



# SUN ELECTRICAL

**Phone: 03 540 2367**  
[www.sunelectrical.co.nz](http://www.sunelectrical.co.nz)  
Tony: 027 3784 580  
Troy: 022 080 4751

124 Aranui Rd  
Mapua, Nelson 7005  
[sunelectrical@xtra.co.nz](mailto:sunelectrical@xtra.co.nz)

Domestic  
Industrial  
Commercial  
Caravan WOFs  
Solar Power Systems

**Our highly skilled and experienced electricians can provide solutions to meet your electrical needs**

- New house/shed wiring
- Rewiring
- Alterations and repairs
- Hot water elements and thermostats
- Energy saving solutions
- Power bill forensics
- Garden and outside lighting
- Solar power systems
- Caravan electrical warrants
- Sewerage and pumping systems
- Test and tag
- Switchboard upgrades and replacements
- Oven and store repairs
- Urgent breakdowns
- Industrial wiring and maintenance

**[www.sunelectrical.co.nz](http://www.sunelectrical.co.nz)**

Hall on Aranui Road, Mapua to chat with our members and see what interesting pieces of art they are working on.

We hope you might become inspired to give pastels a go. Many of our members had never held a pastel in their hands before and are now hooked.

For additional information please contact our Area Rep, Glenys Forbes at 03 540 3388 or by email [gmforbes@ts.co.nz](mailto:gmforbes@ts.co.nz). You can visit our **FACEBOOK** page: PANZ Pastel Artists of New Zealand to see what our pastel artists are creating.

*Gloria Anderson*





**HIGH PLACES**  
[www.highplaces.co.nz](http://www.highplaces.co.nz)  
*trekking worldwide*



**High Andes of Patagonia**

*Patagonia trips depart November and March*

**Also Peru, Ecuador, Himalayas,  
Kilimanjaro, Mt Kenya, Iceland**

**Join us!**

**Tel 03 540 3208 [treks@highplaces.co.nz](mailto:treks@highplaces.co.nz)**

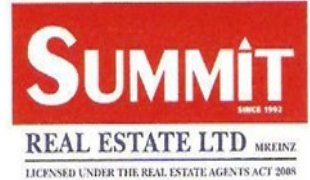


**Sharon De Jong**  
Sales & Marketing Consultant

**Mobile: 0273 202 196**

**Richmond Office**

203 Queen Street, Richmond  
Office: 03 544 2900  
Fax: 03 544 2909  
[sharon.dejong@summit.co.nz](mailto:sharon.dejong@summit.co.nz)  
[www.summit.co.nz](http://www.summit.co.nz)



**JasonFrater**  
BUILDERS LTD

**BUILDING OUTSIDE THE BOX**



Ph: 021 743 497 Ah: 03 528 0337  
Email: [info@jasonfraterbuilders.co.nz](mailto:info@jasonfraterbuilders.co.nz)  
[www.jasonfraterbuilders.co.nz](http://www.jasonfraterbuilders.co.nz)



Time for your  
**Spring Service?**



  
**mouteremotors**

**Ph 543 2707**  
**Main Road, Upper Moutere**

## Moutere Community Youth September

### Junior Youth

Fridays/3:30-5:30pm/Year 5 - Year 7/\$2/meet at UMO church hall

*\*Come early after school for afternoon tea, gold coin donation*

1 Lego Logistics

8 Western Shootout/Nerf Wars (at Dovedale Hall, 3:45-5:15)

15 Sports/Games/Challenges

22 You ROCK!

29 Wave Rave (\$10)

### Intermediate Youth

2nd & 4th Fridays/6:30-8:30pm/Year 7 - Year 9/\$2/meet at UMO church hall

8 Nerds & Noobs Game Show

22 Gaming/Minecraft \*\*\*BYOD\*\*\*

### Senior Youth

1st & 3rd Fridays/6:30-8:30pm-ish/Year 9 - Year 13/\$2/meet at UMO church hall

1 Sports at MHCC

15 Bonfire (we are determined to light a bonfire...)

## Questions?

Tessa: 022 101 2276/Billy: 021 027 28825

[moutereyouth@gmail.com](mailto:moutereyouth@gmail.com)

Facebook - Moutere Community Youth

### MOUTERE COMMUNITY YOUTH

## PUMP TRACK/JUMP TRACK WORKING BEE

To finish it off and get it ready for summer

Sunday 1st October, 1-5pm

(by the skate park, behind UMO church)

Let Billy know if you can bring specialised equipment i.e. diggers/TRUCKS...!

Billy: 021 027 28825

### TOUCH RUGBY

Touch Rugby starts in October so we need to know if you are interested. The plan is to get 2-3 youth teams from the Moutere area to play in the Riwaka touch competition on Thursday evenings through the summer. We would provide transport to and from Upper Moutere if required. Contact Billy if you're keen: 021 027 28825

### MOUTERE COMMUNITY YOUTH

SAVE THESE DATES: 3RD - 6TH OCTOBER

YOUTH CAMP - BETHANY PARK, KAITERITERI

## 'O IS FOR AWESOME!'

YEARS 5-8/COST - APPROX \$150/ACTIVITIES MAY INCLUDE:

SWIMMING-MT BIKING-BEEKEEPING-WAKA AMA-WATER SLIDE-FIELD GOLF

PLUS OTHER AWESOME ACTION

QUESTIONS/REGISTER YOUR INTEREST:

Tessa: 022 101 2276/Billy: 021 027 28825

[moutereyouth@gmail.com](mailto:moutereyouth@gmail.com)

## Rangers RFC Quiz Night

9th September 7pm

Moutere Hills Community Centre - \$15pp

More info at <http://bit.ly/2t6mjri>



## UPPER MOUTERE play group

WE MEET EVERY FRIDAY 10AM-12PM  
MOUTERE HILLS COMMUNITY CENTRE.

WE PROVIDE AND SHARE MORNING TEA.  
POP IN FOR A CUPPA WITH LOCAL PARENTS!

ANY QUERIES PLEASE CONTACT  
ANNA 021 262 6675 OR JOSI 027 374 8223

ALL FAMILIES WELCOME!



Look no further

**Spaces available now!**

Quality care and Education for  
0-5 year olds

We offer:

Age appropriate Programmes

Respectful Relationships

Family Focus

Rural Enviroment

Rich in Literacy and Numeracy

Come and visit us at

1519 Moutere Highway

Email: [office@countrykids.org.nz](mailto:office@countrykids.org.nz)

Phone: Nickie or Anne

035432819



## Weekend Working Wasp (or Bee, rather)

*Rosenthal at Neudorf*  
by Ruth Russ

When the settlement date for the Neudorf School site finally came around, my husband Isaac and I threw a weed-eater, a shovel, a chainsaw and the kids' bikes onto the back of the ute and headed up to the School Block. After clearing the foliage from the driveway to make it wide enough for trucks and tractors, I shovelled moss off the tarmac while the adorably polite Isaac uttered frequent exclamations of “fudge biscuits” and “fiddlesticks” as he repaired the weed-eater's auto-feed every 1-2 minutes. He eventually gave up and hefted Dad's old, blunt chainsaw, cutting down neglected, mostly-dead trees and dragging the branches away with the tractor until it got too dark to see. We experienced a brief moment of horror thinking we had cut down a kauri tree, but Dad—lover of all things native—confirmed it wasn't.

The next day, we spent the afternoon pushing over a huge wooden wall at the edge of the tennis court, and demolishing one of the sheds by the swimming pool. My intention has always been to salvage some of the wood from the old buildings to use in our eventual house. Isaac has never been in favour of this, as all the buildings are made out of pine and painted bright teal. Much to his chagrin, however, after he had chainsawed the wall of our newly-demolished shed in half, he discovered the buildings are in fact not all made of pine, and announced unwillingly, “Honey, I think this might be rimu.” Bless him; he could have kept quiet and I'd have been none the wiser.

We salvaged the cladding whilst trying to avoid the resident wasps we had met previously at the open home in April. Although the nest had been destroyed soon after, a few of the persistent suckers had shifted into the rimu shed. Isaac poured petrol on every little nest he found, and we carried on. Most of the timber was in surprisingly good condition, aside from the rotted southern wall which has never seen the sun. After studying old photos of the Neudorf School building (the second one, built in 1910), I now suspect it to be the weatherboards' original home, as their first two coats of paint match the first two colours of the 1910 school building, which really tickles the unashamed sentimentalist in me.

Despite our buzz of enthusiasm, for that first working bee we knew we weren't going to make much of a dent in the section without heavy machinery. But luckily, Isaac's father has a collection of oversized toys in his shed...

## Harcourts

MyMove Mapua  
Property Management



- Protecting your investment
- Maximising your return
- Sensible rates without compromise
- We look after your property as if it were our own!
- Also covering properties in Richmond & Motueka

Call Amanda James on 03 544 2065

Email [amanda.james@harcourts.co.nz](mailto:amanda.james@harcourts.co.nz)

[www.mymove.co.nz](http://www.mymove.co.nz) | Licensed Agent REAA 2008



Friendly • Professional • Stress-free

Full & Part Time Lets Managed  
Mapua-based Managers  
A friendly & professional service

Call Sian Potts on 027 296 8345

Email [sian.potts@gmail.com](mailto:sian.potts@gmail.com)

[www.mapuaholidayhomes.co.nz](http://www.mapuaholidayhomes.co.nz)



architecture studio | mapua

- Sustainability  
- Innovation  
- Craftmanship

**Simone Wenk**

Reg. Architect (Germany), LBP Design 2 (NZ)

03 540 3282 / 021 1049 039

[simonewenk@xtra.co.nz](mailto:simonewenk@xtra.co.nz)

**Shed 4, Mapua Wharf**

[www.architecturemapua.co.nz](http://www.architecturemapua.co.nz)





## Plum Tree House Cook School

### Spring Cooking School Series

#### You're Invited ....

Explore the seasons' bounty, get inspired, have some fun!

Demonstration classes run from 1.00 – 4.00pm, the third

Thursday of each month.

**September 21<sup>st</sup>** *French Without Tears*

**October 19<sup>th</sup>** *Spanish/Catalan & Tapas (small plates)*

**November 16<sup>th</sup>** *Raw 'Un-cooking class'*

\$65.00 per person - tasting plates, a glass of wine, recipes,

and a little extra something special to take away...

Grab a bunch of friends, your partner, or just bring yourself.

Call Sarah on 027 315 1165 or email [sarah@calisso.com](mailto:sarah@calisso.com)



[www.holidaystaymapua.nz](http://www.holidaystaymapua.nz)

# Brocton Forge Ltd

## Specialist Metalworking by Mike Johnson

For  
all your  
quality hand  
forged products  
... your design  
or ours

Garden Art and Water Features

Gates & Automation

Outdoor Fires

Balustrades

Furniture

Lighting

Signage

... and more



Please call for free quotes and  
suggestions

021 512 321

[mike@broctonforgeltd.co.nz](mailto:mike@broctonforgeltd.co.nz)

[www.broctonforgeltd.co.nz](http://www.broctonforgeltd.co.nz)

## Mapua Makers Market

♥ Handmade

Arts and Crafts

Spring

Craft Market

Sunday 3 Sept 10am - 3pm  
Mapua Hall

Music



Find us on  
Facebook



THE MOUTERE

# Kai Collective

## An Update

Due to a huge amount of interest in the newly formed Moutere Kai Collective we thought we'd share some more information to help answer some of your queries.

Firstly, we're stoked that nearly half of the meals created at our July cook-up have gone out into the community already. However, there are still plenty waiting to find homes.

We're not equipped to deliver meals (yet!), so we need your help. The idea of the Kai Collective is to create meals that people then collect to give to people they feel would appreciate them. So here are a few ways you can help us get them to where they need to be...

**Meals can be picked up from the MHCC every Friday between 10am and 12 noon:** see Anna or Melody in the Playgroup room

**There are meals in the freezer at the Church hall** – see Tessa Werner

**The staff at MHCC can access the Kai Collective freezer and give you a meal if they have time** – please be respectful of their other work though, thanks.

Our main stockpile is held in a freezer at the MHCC. We also bulk deliver to various organisations such as Country Kids, Salvation Army, Widows Network who then distribute meals for us.

We need more helpers to get these meals out and about. Meals are freely available; no prerequisites: they are simply there for anyone in need of a little love.

If you would like to support our work, please feel free to donate via our Give-a-little page,

<https://givealittle.co.nz/cause/themouterekaicollective>

or just search 'Kai' on Give-a-little to find us. ☐

Thank you for all the support so far.

## Braised Ox Cheeks

*Soo Gee cooks up a cheeky winter dish*

Two Ox Cheeks – about 800g, trim and cut in half (available at Raeward Fresh in Richmond)

One or two days beforehand make up a marinade of the following;

300ml stout/beer, 4 star anise, 2 teaspoon coriander seed, 1 teaspoon chilli flakes, 1 teaspoon ground ginger. Mix together and add ox cheeks. Cover and refrigerate up to two days.

Remove ox cheeks from marinade and pat dry (save marinade). Heat some oil in a heatproof casserole dish and brown the cheeks, remove when you're happy with the colour.

Add more oil if needed and gently fry 2 chopped onions, 1 teaspoon garlic (from a jar if you like) and 150g fresh chopped ginger.

Return the cheeks to the dish, add the stout marinade along with two cups of beef stock. Cover with lid and place in oven at 150c for 3 hours.

Best cooled overnight so you can remove the set fat.

Reheat *gently*, taste for seasoning, adjust if needed and serve with creamy potatoes and green veg - or make some herb dumplings which you can add on top of the dish in the last 15 minutes of cooking.



## FROZEN BOYSENBERRIES & BLACKCURRANTS

*Good quality 2nds*

**1kg freeflow packs, or 10kg bulk boxes  
\$7.00kg**

*Ideal for baking, smoothies, jam, sauces, desserts etc*

**Buy direct from grower Upper Moutere - Phone 5432888  
Davey Road Berryfruit – Ross and Karen Prestidge**

# NELSON BOTANICAL SOCIETY

## FIELD TRIP REPORT

### SUNDAY 21 MAY

### MOUTERE REMNANTS, UPPER MOUTERE

---

A sunny day saw fourteen Nelson Botanical Society members welcomed, firstly, to Lancewood Villa, the home of Fiona del Bosco and Alastair Wilkinson, and, later in the day, to a neighbouring property owned by Susan Moore-Lavo and Tony Lavo. For the purpose of this field trip these two locations were titled "Moutere Remnants". But what remnants!

Also joining us for the day was Martin Heine. Previously a manager with the Department of Conservation, Martin now works with the Tasman Environmental Trust and has been closely involved with advising on the restoration work that has taken place on the properties we were visiting. Martin explained that following the transformation of forested areas into pasture and the occurrence of beech dieback, the remnants are two of perhaps only ten remaining mixed beech-podocarp areas in the Moutere Ecological District - a district which at one time would have been almost entirely covered in forest.

One hectare of Lancewood Villa land is QEII covenanted. After checking out Fiona and Alastair's plant-purified swimming pool, it was towards this rabbit - (and dog-) proof fenced area we first headed. The way led though a native garden with many of the plants originating from Jack Walls, Fiona's father and an inveterate propagator of native species. The temptation to linger and ascertain the exact identity of the garden contents was resisted only by the promise of greater things to come.

In the QEII area proper we were soon joined by fantails, enthusiastic to make short work of any "grubblies" we might disturb. Alastair and Fiona took over the property some five years ago at a time when its previous primary purpose as a place of formal retreat had somewhat diminished and the walkway

through the bush had suffered the advances of invasive weeds such as blackberry. Our unhindered pathway owed much to the hard work of our hosts in ridding the area of the invaders.

The presence of the larger trees, such as *Dacrydium cupressinum* (rimu), *Fuscospora solandri* (black beech) and an impressive *Podocarpus totara*, seemed to emphasise the enduring nature of the bush.

Consideration of the lower-level vegetation soon saw the original plant list, drawn up during a survey by Michael North, receiving ticks against the more familiar species. However some of the other less well-known entries needed a "Cathy clarification" to aid their identification. Two examples - *Melicytus micranthus* (swamp mahoe) sports leaves with a distinctive "Mrs. Simpson haircut" (think the TV series not the abdication) and a pale blotch at the base; and the fern *Asplenium flaccidum*, which is usually epiphytic while *A. appendiculatum* (previously *A. terrestre*) is predominately ground growing, has secondary pinnae that vary little in width compared to those of the latter which appear triangular in shape.

Observation of a Mairie sparked a discussion on the differences between the four species of *Nestegis* - *N. apetala* (coastal maire) a North Island coastal tree, *N. montana* (narrow-leaved maire) *N. cunninghamii* (black maire) and *N. lanceolata* (white maire). The two most obvious differences between black and white maire seem to be firstly, in the leaf midrib which is sunken below the top surface of black maire leaves but flush with the top surface in the case of white maire ; and secondly, in the veins on the underside of the leaves, which in black maire are visible whilst on white maire they are not. This species turned out to be white maire.

Even those members exhibiting a lamentable lack of enthusiasm for the intricacies of grasses and the like must surely have been impressed by the sedge *Carex flagellifera* with a flower stem that was nearly 2 m in length. Other additions to the plant list included *Coprosma areolata* with its strongly-veined and pointed -tipped leaves; *C. tayloriae* with its distinctive layered branches; *C. x cunninghamii* showing resemblance in its various sizes to its parentage of *C. propinqua* and *C. robusta*; *Cordyline australis* (cabbage tree); *Leucopogon fasciculatus* (soft mingimingi); *Pittosporum eugenoides*



Continued from previous page

(lemon wood) and *Prumnopitys ferruginea* (miro). Among the ferns added to the list were *Lastreopsis glabella* and *L. microsora* ssp. *pentangularis* and the impressive-sounding shield fern *Polystichum neozelandicum* subsp. *zerophyllum*.

After emerging from the bush we found ourselves in a paddock area that Fiona and Alastair are enthusiastically planting up with more native species. Various storms over the years have taken their toll on trees in the reserve but perhaps the most significant loss occurred in this boundary area between the bush and the paddock. Here we saw the remains of a most substantial *Lophozonia menziesii* (silver beech) blown down along with the considerable growth of the mistletoe *Peraxilla colensoi* that had once flowered prolifically on its branches.

After lunch, in the sunshine and next to the swimming pool, we headed across the paddocks to be met by Susan and Tony who showed us around their land. Although consisting of a number of separate areas of bush and not under a QEII covenant, this larger site once again impressed with its mature trees. *Dacrycarpus dacrydioides* (kahikatea), *Fuscospora solandri* (black beech) and *Podocarpus totara* evidenced the age of the bush. Also impressive was the amount of native planting that Susan and Tony have accomplished - along with species such as white maire, black beech seedlings were making encouraging growth in areas of the now ungrazed pasture.

Lack of time precluded the production of a comprehensive species list update but among the additions made to the existing list were the tree fern *Dicksonia fibrosa* with its beautiful skirt of old fronds, *Pseudowintera colorata* (pepper tree) with its distinctive red blotched leaves, the ferns *Pyrrosia eleagnifolia* (leather-leaf fern), *Asplenium polyodon* which is mainly epiphytic and distinguished by its serrated, glossy fronds, the interesting *Asplenium hookerianum* x *bulbiferum*, *Senecio glomeratus* and *S. hispidulous* (fireweed).

An area that aroused considerable interest amongst our members was a large pond surrounded by yet more plantings. The pond is currently home to a red pondweed named *Potamogeton cheesemanii*. Tony related to us his not inconsiderable, ingenious, strenuous and ultimately successful efforts to rid the pond of its original growth of an invasive, exotic weed. Both he and Susan were relieved to know the name of the now flourishing, replacement red pondweed and to be assured that it is a native species.

The last section of Tony and Susan's bush that we visited was a real favourite with those who viewed it. To describe it as resembling a cathedral of rimu (*Dacrydium cupressinum*) is no exaggeration. The feeling experienced in looking up at the beautiful towering podocarps might well be compared to the thrill experienced upon first seeing inside the famous historic churches of Europe. There were also delights on the ground with a number of members pointing their cameras at various fruiting bodies of fungi (see June 2017 Bot. Soc. Newsletter for the results).

Our sincere thanks go to Fiona, Alastair, Susan and Tony for allowing us to view their properties. Their generosity enabled us to enjoy a great day of botanising.

Contacts for those who may want to join the Nelson Botanical Society, wish to seek advice on native forest protection or restoration, or would like to know more about QEII National Trust Covenants:

Nelson Botanical Society information: Dave Grinsted (President) davidgrinsted@gmail.com

Local protection and restoration advice: Martin Heine 0274305273 or martin.heine@xtra.co.nz

QEII National Trust Regional Field Officer: Tom Stein 0274 453 890 or tstein@openspace.org.nz


## COASTAL GARDEN CLUB

**Coastal Garden Club** meets at 1pm on the first Thursday of the month at the Tasman Bible Church opposite Jesters Cafe.

Both men and women most welcome.

Ph 03 528 5405



**EDWARDS LTD**  
COUNTRY BUILDINGS

*Uniquely Crafted Homes & Outbuildings*

We also specialise in:  
**BRICK & BLOCKWORK**  
**RETAINING WALLS • FOUNDATIONS • DECKING**  
**GARDEN WALLS • STONEMWORK**

---

**FOR HIRE: 2.5T Excavator / Tip Truck** (Operator available if required)  
**Scaffolding** (Supply & Erect / Supply only)

**Call Tim 021 320 306**



**CARAVAN RENTAL**

Local business offering great value, good quality, well equipped UK caravans available for short and long term rental. Can be delivered and set up to a campsite/location of your choice. Short term holiday rates from \$50 a day. Long term static hire from \$100 pw.

[www.kinacampers.co.nz](http://www.kinacampers.co.nz)

Email: [info@kinacampers.co.nz](mailto:info@kinacampers.co.nz)

**Simplicity Funerals**  
Simply respectful. Simply affordable.



**Planning for the future...**

Simplicity Funerals Nelson have an information pack entitled "My Life, My Funeral" which contains a number of pamphlets with information about pre-planning your own funeral, and an application form for the FDANZ Funeral Trust.

This is a useful tool for all of us as we plan for our future. Much like making a Will, completing the information on the form provides peace of mind to families when faced with bereavement.

**Contact us for more information or to receive this free information pack.**

69 Haven Road, Nelson 7010 [www.simplicity.co.nz](http://www.simplicity.co.nz) **03 539 0066** 

**LEIGH BRIARS ARCHITECTURE**

03 543 2667  
021 215 0946  
[briars@ts.co.nz](mailto:briars@ts.co.nz)  
RD 2 Upper Moutere  
Nelson 7175





**MyPersonalPlumber**

**Alex Bint**  
0800 444 343  
027 542 4329  
[alex@mypersonalplumber.co.nz](mailto:alex@mypersonalplumber.co.nz)  
[www.mypersonalplumber.co.nz](http://www.mypersonalplumber.co.nz)  
1366 Moutere Highway,  
RD1, Upper Moutere, 7173

**MAPUA AUTO CENTRE**  
— 'YOUR AUTOMOTIVE SPECIALIST' —



**Fully Equipped Automotive Workshop**

**All Makes & Models**

**6 Courtesy Cars**

**W.O.F.**



**20 WARREN PL, MAPUA**  
**PH 03 540 2180**  
[mapuaauto@mapua.biz](mailto:mapuaauto@mapua.biz)  
[www.mapua.biz/mapuaauto](http://www.mapua.biz/mapuaauto)




Whole Barley 25 kg bags  
\$19 per bag including GST.



Phone 021 454 731

or

03 526 7004



**TASMAN EQUINE THERAPIES**

Fiona Ramsay

Advanced Equine Body Worker

Physiotherapeutic Remedies for Horses

Sports Performance Therapy, Injury Repair/Rehab, Equine Bowen

Qualified Professional Services

027 452 3906

**PEA STRAW**

*"The ideal garden mulch"*

Suppliers of quality Pea Straw for the past 15 years

**\$12 per bale**

1290 Main Road, Upper Moutere

Please phone to arrange collection

**Ph: 03 5432890 or 021 496 557**

**Horse Cover & Gear Repairs**

**Horse Cover Washing**

**Prompt Service**

**Good Rates**

**Contact Lawrie**

**1350 Moutere Highway**

**Ph: 03 543 2234**

**021 208 2192**



**Kenmore Farm**

Old House Rd, Upper Moutere

*Producing quality.....*

**\*WILTSHIRE SHEEP \* SANEEN GOATS \* LAVENDER\***

Consultation in .....\*Lifestyle Block Animal Health Care \*&

**\*Natural Equine Hoof Care Practitioner\***

HOOFNZ Course Trainee Affiliated

Enquires welcome 027 405 4892 [jspenno@hotmail.com](mailto:jspenno@hotmail.com)

or visit us on [www.facebook.com/KenmoreFARM](https://www.facebook.com/KenmoreFARM)



***Caring for all creatures  
Great & Small***

We offer a standard visit of \$97.50 which is  
inclusive of mileage on Thursdays  
for pre-arranged calls.



**CONDITIONS APPLY -Phone (03)5441200** for appointments  
and more information.

35 McGlashen Avenue, Richmond

25 Edward Street, Wakefield



**TOWN & COUNTRY**

**VET**

[www.tcvet.co.nz](http://www.tcvet.co.nz)





## SPRING HEALTH CALENDAR

### SHEEP & GOATS

#### Foot care

Wet feet weaken the skin and allow the entry of Footrot bacteria. The result is weeping sores between the claws that may spread into the hoof and create abscesses and damaged soles.

Often, in soft, soggy pasture the hoof doesn't get worn and, therefore loses shape.

**TREATMENT:** clean and trim the area and check for stones and sticks. Apply ointment or spray to the feet and hold until dry.

Foot bathing in zinc sulphate, copper sulphate or formalin solutions or formalin spray can control outbreaks!

#### Tailing and Drenching lambs

Lambs born to ewes given long-acting drenches pre-lambing will not usually drench at tailing time.

If the ewes have not been given a long-acting drench pre-lambing they can be given a drench at tailing, but the lambs generally are not likely to benefit directly from a drench this early in life.

The benefit of drenching ewes at tailing lies in reducing the output of worm eggs onto pasture, to infect the lambs.

#### Fly Prevention

Use of a fly prevention product such as Cyrex, will prevent flystrike related to tailing.

#### Lamb Vaccination

Lambs born to ewes not vaccinated pre-lambing should be given Lamb Vax (Tetanus, Pulpy Kidney) vaccine for immediate protection at tailing time. At weaning time a sensitiser 5 in 1 should be given followed by a 5 in 1 booster 4—6 weeks later.

### LAMB PROLAJECT 1000 B12

Weaned Lambs are the most susceptible class of stock to B12 deficiency.

They inherently have higher requirements than any other stock type.

B12 deficiency symptoms are poor appetite and hence poor growth rates, sometimes with very watery eyes.

Prolaject 1000 is the vaccine of choice.

### CALVES

#### Vaccination

Calves should be vaccinated from three months of age with 5 in 1, two injections four weeks apart to protect against black leg amongst other diseases.

We also highly recommend vaccinating against Lepto. This must be administered by a vet, so if you have not yet vaccinated any of your stock for Lepto or want to arrange for Lepto vaccinations for your calves, please contact the clinic.

#### Calf Disbudding

Disbudding of calves should occur when they are between two and six weeks of age. Call the girls at the clinic to arrange for your calves to be disbudded. If you know of several calf mobs in your area, look at booking as a group.

#### Calf Drenching.

There will be no need to your drench calves until they are weaned and eating pasture. Give us a ring at the clinic to discuss the best and easiest options for your farming situation.

**TOWN & COUNTRY VET – 5441200**

## TOWN & COUNTRY VET RICHMOND



*Dog Wash K'9000*

**Coin and note operated**

**Open 24 hours**

**7 days**

## Hello Animal Lovers

Well, Spring already! I am sure it is a great relief for animals and humans alike after a very wet and challenging Winter. Spring grass and warmer temperatures often have an effect on animal behaviour. There is more energy and a spring in the step as well as new life such as calves and lambs. It is a time to watch stock carefully as they can be affected by the spring grass and not forgetting an increase in the insect population. It is very important to make sure grazing animals are wormed and dogs and cats protected from fleas or it can be miserable for them. An increased parasite burden can significantly affect an animal's behaviour which is often overlooked as a cause for unpredictable behaviour.

New life is particularly susceptible to changes in temperature or parasites. So adequate shade and shelter should be provided. Most animal mothers do a wonderful job protecting their young but sometimes need help and some are more maternal than others. There are some remarkable stories of animals raising the young of a different species. Often a dog will suckle kittens but when I lived in Australia a few years ago my neighbour had a little dog that suckled a baby wallaby which was pretty remarkable. In some cases however a young animal has to be bottle raised which is always difficult and very demanding, even if it is successful the young animal grows up to relate to whatever raised it which can cause problems when introducing that young animal back to its own kind.

A thought should be spared for animals that lose their young. They certainly can grieve and will call and call sometimes for days. I once had a sheep that would not leave her dead lamb for a week; it was heart breaking to hear her calling and trying to get the lamb to stand up. There are even animals that lose their young and try to pinch one from another mother, instinct is so strong.

This a cycle that has been played out over hundreds of years and will continue to do so. With the right support we can always look forward to greeting new baby animals in Spring.

Pet tip for the month:

Be cautious around animals that have just had young, as they can be very protective and can be aggressive. Children should be supervised at all times as their instinct will be to pick up the young animal which can be dangerous.

I am always happy to help with any animal behaviour issues.

Sue Mott

Email: [willowsprings@slingshot.co.nz](mailto:willowsprings@slingshot.co.nz)

\*\*\*\*\*  
 \* **Hi MY NAME IS Leah and I'M LOOKING FOR** \*  
 \* **a CHICKEN COOP THAT WILL HOLD 2 HENS,** \*  
 \* **AND BE ABLE TO MOVE AROUND MY** \*  
 \* **GARDEN. IF YOU'VE GOT ONE** \*  
 \* **LYING ABOUT IT WOULD BE** \*  
 \* **REALLY APPRECIATED.** \*  
 \* **PH 03 5432 079** \*  
 \*\*\*\*\*



\*\*\*\*\*  
 Groovy  
 Paws  
 Dog Grooming  
  
 Caroline Lusty, 115 Tarrant Rd, Mahana  
 Ph: 03-543 2277 027 520 1285  
 Email: [caro.lusty@xtra.co.nz](mailto:caro.lusty@xtra.co.nz)

\*\*\*\*\*  
 ■ **8 Ply Wool Needed** ■  
 ■ Ali Davis of Dovedale would appreciate any ■  
 ■ 8 ply wool you might have any have hiding ■  
 ■ away as a forgotten project (or just left over) . ■  
 ■ She is crocheting blankets for Nelson Plunket ■  
 ■ and it sounds like she isn't going to stop ■  
 ■ anytime soon! So far she has made 23 for ■  
 ■ Plunket and 40 for Starship. She is happy to ■  
 ■ come and collect it and can be contacted by ■  
 ■ email at [davisfamily237@gmail.com](mailto:davisfamily237@gmail.com) ■  
 \*\*\*\*\*

Thank You From Dovedale



A warm shout out to all of those who attended the recent Lifestyle Blockers Hands-On Farm Skills Day held recently in Dovedale. Participants were so thrilled to learn how to build a fence from scratch, how to crutch/shear a sheep, how to manage their pasture, how to use and maintain a chainsaw, how to carve up their home kill, how to weld, just to mention a few activities. Others learnt how to make amazing compost and vege gardens; not to mention the mass of information gleaned from our local vet with regards to animal health and husbandry. If you missed out this time, Dovedale school PTA will be organising another fundraiser event on these and other topics in the not too distant future. If you wish to be kept in the loop please email your interest to [dovedale.pta@gmail.com](mailto:dovedale.pta@gmail.com). We will also continue to advertise in/support this community newsletter.

Proudly sponsored by:



## The Social Group

Meets at the Sunday School Hall  
(Upper Moutere Lutheran Church) on  
**Thursday afternoons at 1.30pm each  
fortnight.**

Join in games and cards. Enjoy our after-  
noon of fun and fellowship. All welcome.

**Contact Brian or Lois Eggers**

**ph 5432 871**

# MIKES MOWING SERVICES

**Reliable Friendly Service  
Free Quotes**

**Phone:**

**021 512 321**



# Harcourts

**Harcourts Mapua**

**"The Big Little Office"**



Wendy Perry  
Salesperson  
027 249 1701



Sian Potts  
Salesperson  
027 296 8345



Lynn Remington  
Administrator  
03 540 3425

Harcourts Mapua - 2A Iwa Street - 03 540 3425

[www.teamtasman.co.nz](http://www.teamtasman.co.nz)

Licensed Agent REAA 2008



## **FOR SALE**

Kowhai Trees

2-3 yrs old, 1m tall

\$10 each

Ph: 022 4259 355

Cnr Old Coach Road & School Road, Mahana



## **Endurance spraying**

**All types of weed spraying  
Gorse and Brushweed  
Control**

**Commercial • Residential  
Forestry Road Spraying  
Moss treatment for lawns,  
concrete areas and decks.**



***Contact Pete Hughes*  
021-194 2654 A/H 03 544 2654  
Growsafe certified •  
Approved Handler**



**Water Features  
Paving  
Rock Work  
Irrigation  
General Landscaping**

**Michael Hardy  
Ph: 021 443 908  
A/H: 03 543 2555**



**Andrew Prouting (Chops)**

**M 027 305 2412**

**P 03 543 3613**

**E chopsfencing@gmail.com**

***To view our work visit Chops Fencing  
on Facebook***

- Complete Fencing Services •
- Post Driving • Piling Fences •
- Rural Fencing • Pea Straw •
- Log Splitter •



**Your Local Tree Specialists**

- All work fully insured
- We cover all aspects of tree care from planting and reticulation systems, to tree management and hazardous tree removal

**Ph: 0223 276 164**



*"Discover Enhanced Health and Well-Being"*

- BIODYNAMIC CRANIOSACRAL THERAPY
- THERAPEUTIC / REMEDIAL MASSAGE
- FAR-INFRARED SAUNA — REFLEXOLOGY
- dōTERRA WELLNESS ADVOCATE / ESSENTIAL OIL WORKSHOPS

CONCESSIONS & GIFT VOUCHERS

**MELISSA POTTER**

(I.T.E.C, D.REF, R.M, BCST DIP, P.A.C.T, YOGA DIP)

PH/TXT: 021-1368439

WWW.THEARTOFTOUCH.CO.NZ 

*Bringing you over 28 years experience!*



**JO CHAPPLE COUNSELLING**

**DO YOU NEED SOMEONE TO TALK TO?**

Couple and Individual counselling available  
Please contact Jo on:

0277132145

chapplejo86@gmail.com

123 Aranui Rd, Mapua

Counsellor. BAppSocSci. NZAC Provisional Member (2015)

**LOCAL MIDWIFE CLARE SPRATT**

**Ring Clare for friendly professional maternity care and advice.**



*I offer full 24 hr maternity care from conception through to 6 weeks post natal, home/hospital and water births, birthing pool available, natural remedies, free pregnancy testing, breastfeeding support and much more.*

T: 03 526 7764

M: 0273324929

E: midwifeclarespratt@me.com



Hatha Yoga in the Upper Moutere. On Mondays & Wednesdays.

Please ring Jane for more information. 0272635211

'When we control the breath, we calm the mind'

**MOUTERE MASSAGE**

**FIONA RAMSAY**

**QUALIFIED AND PROFESSIONAL**

\*\*\*\*\*

**\*SPORTS \*DEEP TISSUE \*INJURY REPAIR**

**\*FOOT REFLEXOLOGY \*BOWEN THERAPY**

\*\*\*\*\*

**20 WILSON ROAD**

**PH/TXT 027 452 3906**

**UPPER MOUTERE**

**MON, TUES, WED & FRI**



**Dorothea Tebbenhoff**  
*Acupuncture*



**Licensed Acupuncturist**  
MAcNZ, Acc Provider

25 Greenwood St, Motueka

**03 528 6239**

[www.tasmanacupuncture.co.nz](http://www.tasmanacupuncture.co.nz)

**\*\*MOUTERE MASSAGE\*\***

Suffering from muscular pain? Sciatica, lumbar pain, upper back pain, neck and shoulder pain? Then why not give Fiona a call and make an appointment to eliminate debilitating pain from your body.

Local business with affordable rates. Evening hours avail from 6.00 pm or Day hours Monday to Friday 10 am to 4pm.

1 Hour Massage \$65    45 Minute \$55    1/2 Hr \$40    1.5 Hour \$100

Remedial Massage, Injury Rehab, Deep Tissue, Bowen Therapy, Reflexology.

Qualified and Professional

Ph/txt for an appointment and be pain free and mobile again. See advertisement for contact details.

\*\*\*\*\*

**Thank you to those who came out to support this year's very successful Sarau Winter Sale.**

Both the Sarau Trust and Country Kids benefitted from this lively mid-winter fundraiser. Shoppers spent many happy hours browsing the huge array of books and beautiful work of the local Embroiders Guild. Visitors to this year's sale also enjoyed yummy soup and baking while sipping delicious coffee supplied by Tasman's "The Grind" : all while listening to Sarau Scholarship recipient Stuart Gordan and friend, both talented young musicians. In the Hyatt room bargain hunters found many treasures amongst the clothing and shoes on sale.

A great weekend for all!



# Heine's

**Cartage and Contractors**

We have trucks, excavators, a dozer, a grader, and the expertise to do all your cartage, drainage, building site & foundation, roading, and subdivision work.



40 years of local knowledge

and experience in the transport and contracting industry

Phone Wayne on 03 5432 788

027 430 2725

Or call in at our workshop and office at

1455 Moutere Highway

(by the firestation)

UPPER MOUTERE



## Chandrakirti Meditation Centre

289 Sunrise Valley Road, Upper Moutere, NZ P: +64 (0)3 543 2021

E: meditate@chandrakirti.co.nz W: www.chandrakirti.co.nz

### Sunday Meditation Class & Lunch



**Every Sunday 10.00-11.30am**  
**With Geshe Jampa Tharchin**  
Chandrakirti Meditation Centre

Everyone welcome to join us,  
by donation

### Weekly Yoga Class



**Wednesdays, 9.30-10.45am**  
**6 Sept-29 Nov**  
**With Sue Ransom**  
Chandrakirti Meditation Centre

Please bring a yoga mat &  
blanket. Cost \$10  
Ph: 027 391 2431  
sue.ransom@xtra.co.nz

### Mindfulness 1 Day Retreat



**Saturday 2 Sept 9.30-5.00pm**  
**With Angela Hartman**  
Chandrakirti Meditation Centre

Perfect for beginners.  
Cost \$40. Register at  
www.chandrakirti.co.nz or  
meditate@chandrakirti.co.nz

### Meditation for Heart and Mind



**Wednesdays 6.30-7.30pm 20**  
**Sept- 24 Oct**  
**With Lozang Hursthouse**

Wee Studio, 155 Stafford Drive,  
Ruby Bay, 03 540 2657  
Create a calm mind & open heart  
Cost \$60. Register at  
www.chandrakirti.co.nz or  
meditate@chandrakirti.co.nz



## Community Sharing Table

"Leave what you like , take what you need"

The first community sharing table has been held and it will continue to run each Friday at the Moutere Hills Community Centre. This great initiative was organised by Marijke Frowijn who is confident the sharing table will continue to grow and will benefit families that need a bit extra and the elderly and is a lovely way of sharing anything extra that you may have.

Pop down any Friday and help Upper Moutere to continue to be one of the most sharing communities in New Zealand.



## REACH YOUR HEALTH GOALS

Your friendly community Chiropractors are here to help you and your family reach your health goals

X-rays onsite, ACC registered  
Experienced with sport and work injuries, performance enhancement and whole family care (0-100 years)



Tasman Bay Chiropractic



Call 03 544 4554 Monday - Saturday  
Tasman Bay Chiropractic, 64 Oxford Street Richmond  
[www.tasmanbaychiropractic.co.nz](http://www.tasmanbaychiropractic.co.nz)



Country Cuts  
Hairdressing

Karen

For all hairdressing services

14 Kelling Road

Upper Moutere 7175

(03) 5432297 or 0274 728863

Phone or email for an appointment

[k.j.rhind@xtra.co.nz](mailto:k.j.rhind@xtra.co.nz)



Accountancy A to O Ltd

*Douglas Strong*

Retired Chartered Accountant

*Tamzin E Maritz*

Dip Bus. Dip Accounting

*For All your Accounting Requirements*

91 Neudorf Road,  
Upper Moutere, 7144  
PO Box 26,  
Upper Moutere, 7144

Phone: (03) 543 2933  
E-mail: [jdoug@xnet.co.nz](mailto:jdoug@xnet.co.nz)



Complete Water Solutions

**COME AND SEE US  
FOR A GREAT DEAL**



Your local suppliers of  
**TANKS, PUMPS &  
UV FILTERING SYSTEMS**



24 Huffam Street Motueka

Ph: 528 0040

[www.cwsnz.co.nz](http://www.cwsnz.co.nz)

## NOW IS THE TIME

We often hear from people wanting to sell their property at the 'best' time of the year. Whether you want the garden to really pop with its spring colours, the house itself to feel fresh and sunny to viewers, or even if you just want exposure to the extra people that come with summer to create competition and drive price, if you are thinking of selling, then NOW is the time to get prepared. Check out: <https://sellingahome.reaa.govt.nz> and call your local trusted real estate professional on 027 5402 060 to start the conversation.

## REINZ CALLS FOR LVR REVIEW AS NUMBER OF SALES ACROSS NZ FALLS SIGNIFICANTLY

The number of properties sold across New Zealand in July fell by 24.5% when compared to the same time last year, and the number of properties sold in Auckland fell by 30.6% (for the same period) according to the latest data from the Real Estate Institute of New Zealand. This slowing of the market has prompted calls from both the CEO of REINZ, Bindi Norwell and Prime Minister, Bill English for a review of the Loan to Value Rates, which could be good news for first time buyers and those wanting to increase their property ownership. Price wise, we have still been seeing some noticeable increases around the Motueka area especially in new builds and sections and REINZ statistics show that for the month of July, the average sale price for the region was \$583,283 up 2.3% on June.

**BO MANSFIELD** (Lic REAA)

027 5402 060

[bo.mansfield@bayleys.co.nz](mailto:bo.mansfield@bayleys.co.nz)



### APPRAISALS

No charge, confidential and essential even if you wish to sell privately - Call today for yours

### DREAMING OF ...

Your own business ?

Talk to us today about our premium tourism opportunities

### INTEGRITY

Acting in the best interest of the client or project - NOT the self



#### SPLIT APPLE PARADISE

Beach side, native bush clad land. Plans & consents in place. Magical. Moonraker Way.



#### POMONA PERFECT

Uninterrupted Panoramic Views. 3 bed executive home in park like grounds. Ruby Bay.



#### MOUNTAIN VALLEY LIFESTYLE

Approx 22 ha along the Motueka River. Blueberries, apples, home and workshops. Motueka Valley Hwy.





# TRADE/PROFESSIONAL & SERVICES LIST

Accountants	Accountancy A20 Limited	03 543 2933
Acupuncture	Dorothea Tebbenhoff	03 528 6239
Animal Behaviourist	Sue Mott	03 9700952
Architectural Designer	Leigh Briars	Mob: 021 215 0946 AH: 03 543 2667
Architectural Designer	Simone Wenk	Mob: 021 1049 039 AH: 03 540 3282
Builder	Tim, Edwards Country Buildings	Mob: 021 320 306
Builder	Andrew Eggers	Mob: 027 446 0739 AH: 03 543 2757
Builder	Jason Frater	Mob: 021 743 497 AH: 03 528 0337
Cartage & Contractors	Wayne, Heines	Mob: 027 430 2725 AH: 03 543 2788
Chiropractors	Tasman Bay Chiropractic	03 544 4554
Counselling	Jo Chapple	Mob: 027 7132 145
Dog Grooming	Caroline Lusty, Groovy Paws	Mob: 027 520 1285 AH: 03 543 2277
Caravans	Kina Campers	www.kinacampers.co.nz
Electrician	Tony, Sun Electrical	Mob: 027 378 4580 AH: 03 540 2367
Fencing	Andrew Prouting, Chops Fencing	Mob: 027 305 2412 AH: 03 543 3613
Funeral Directors	Simplicity Funerals	03 539 0066
Gardening	Pete Hughes, Endurance Spraying	Mob: 021 194 2654 AH: 03 544 2654
Gardening	Abel Tasman Tree Solutions	Mob: 022 3276 164
Gift shop	Cathie, Kete	Mob: 021 732 752 03 540 2561
Gymnastics Club	Tasman Gymnastics Club	Mob: 021 069 5991 AH: 03 543 2512
Gym	Moutere Spin	Mob: 027 422 9949
Hairdresser	Country Cuts	Mob: 027 472 8863 AH: 03 543 2297
Health & Wellbeing	Melissa Potter, The Art of Touch	Mob: 021 136 8439
Horse care	Kenmore Farm	Mob: 027 405 4982
Horse gear repairs	Lawrie	Mob: 021 208 2912 AH: 03 543 2234
Horse therapy	Tasman Equine Therapies	Mob: 027 452 3906
Landscaping	Michael Hardy, Hardy Landscapes	Mob: 021 443 908 AH: 03 543 2555
Lawyers	Pitt & Moore	03 543 9090
Local market	Mapua Country Store	03 540 2581
Massage	Fiona Ramsay	Mob: 027 452 3906
Mechanic	Mapua Auto Centre	03 540 2180
Mechanic	Moutere Motors	03 543 2707
....	....	....
Midwife	Clare Spratt	Mob: 027 332 4929 AH: 03 526 7764
Painting, tiling or plastering	Vision, Glenn	Mob: 020 4091 7 929
Plumber	Alex Bint, My Personal Plumber	Mob: 027 542 4329 AH: 0800 444 343
Pub/Restaurant	The Moutere Inn	Ph: 03 543 2759
Real Estate	Sian Potts, Harcourts Real Estate	Mob: 027 296 8345
Real Estate	Wendy Perry, Harcourts Real Estate	Mob: 027 249 1701
Real Estate	Sharon deJong, Summit Real Estate	Mob: 027 3202 196
Real Estate	Doug Smith, PGG Wrightson	Mob: 027 543 2280 AH: 03 543 2280
Real Estate	Debbie Watson, Tall Poppy	Mob: 021 462 629 AH: 03 543 2629
Recreation Centre	Moutere Hills Community Centre	03 543 2516
Restaurant	Jellyfish Cafe and Wine Bar	03 540 2028
Play Group	Anna / Josi	021 262 6675 / 027 374 8223
Shearing	Sue	021 533 350
Social Club	Brian or Lois Eggers	03 543 2871
Tai Chi	Taoist Tai Chi	03 545 8375
Tennis Club	Vanessa Mairs	claybrookeestate@xtra.co.nz
Tiling	Tile it (Tom)	Mob: 021 048 5649 AH: 03 5432644
Tree care	Abel Tasman Tree Solutions	022 3276 164
Trekking	High Places	03 540 3208
Vet	Town & Country Vet	03 544 1200
Water tanks	CWS Complete Water Solutions	03 528 0040
Window Cleaning	Phillip Ridder, Top of the South	Mob: 022 029 1793
Yoga	Jane	Mob: 027 263 5211
Yoga	Jo Wilcox (kids yoga)	Mob: 021 1709495

