

PERFECT HARMONY

LOCAL LIVES



Award-winning Nelson-Tasman barbershop chorus Men in Accord want to hear from local men keen to become part of their 'band of brothers'.

The second weekend in October saw barbershop singers from all around New Zealand gathered in Blenheim for the National NZ Barbershop Convention. The event, which was a treat for anyone who loves this a-cappella, four-part harmony singing style, was held at the new ASB Theatre Marlborough.

The Men in Accord (MiA) barbershop chorus were there to represent Nelson/Tasman—and they did our region proud, winning silver in the Small Chorus category.

MiA were, in fact, the smallest chorus competing, with only 11 men singing on the risers. Good things come in small packages, though, and their score even beat one of the other choruses with twice as many singers. "MiA were congratulated on how good we sounded for such a small group and you can imagine how great that made us feel," says Dave Baker, who has been a tenor with the chorus for the past eight years.

MiA get together for rehearsals on Tuesday evenings at Club Waimea in Richmond. Dave credits musical director Andy Rolfe (bottom row right) for getting them up to competition standard with his firm and patient approach. "Along with some much appreciated additional coaching and guidance from Celia Rodley, we were able to fine tune the songs to give them that little 'extra something' to help make us stand out from the other competitors."

The weekend was full on and tiring, he says, but all the guys agree it was well worth it. "Competing at the Convention has been a wonderful team effort and an experience that MiA will remember fondly for years to come. The support and camaraderie amongst the guys has been so uplifting—we truly are a band of brothers."

The Convention also gave them a great opportunity to hear New Zealand's very best barbershop choruses, and to enjoy the music of 2016 world champion barbershop quartet Forefront, who had

come all the way from the USA to perform as the headline guests.

The contest saw both choruses and quartets singing for a place at the world championships. Men in Accord also had success with their quartet at the Convention. With the bass and baritone hailing from New Zealand and the lead and tenor originally from the UK, the four are aptly known as The Hemispheres. They brought home the Iraia Te Whaiti Trophy for the Most Entertaining Quartet, as voted for by the audience.

"It was the first time the chorus's quartet had entered the competition," says Dave, who was among the four. "We were competing against 19 other quartets, so winning that section was a great achievement. The Hemispheres will now have their names added to the trophy, alongside past winners, including those of previous world champion quartet The Musical Island Boys. How cool is that!"

Now that the competitions are over, it's business as usual for Men in Accord, who are back to their regular rehearsals. Winning the silver medal has been a huge boost, though, and they are now looking to swell their numbers by recruiting new members. "So a message to all you guys out there who can hold a tune. If you're looking for something different to do on a Tuesday evening, we encourage you to come along and see how much fun four-part harmony singing can be."

For more information about Men in Accord, just pop in and see them at Club Waimea (Tuesdays from 7pm). Alternatively, visit www.men-in-accord.nz or call Dave on 03 540 2178. Men in Accord are also happy to perform at public and private events. To check their availability, feel free to contact them via their website.



PLACING AN ADVERTISEMENT

Thank you for advertising in the Grapevine—you help us cover the cost of producing and delivering this free community newsletter each month.

The deadline for each issue is the 15th of the month.

Please email your print-ready ad to—umograpevine@hotmail.com or provide paper based, print-ready copy to the Upper Moutere Store.

The following prices apply for advertising:

- ∞ Births, marriages, deaths and giveaway notices: free
- ∞ Business card size advertisement: \$12
- ∞ 1/4 page advertisement: \$25
- ∞ 1/2 page advertisement: \$50
- ∞ Full page advertisement: \$95 (if space available).

Please deposit payment (and identify it with your name) to our account: NBS 03 1354 0229034 16.

Sending us editorial items

We warmly welcome editorial contributions to the Grapevine from all residents in the Moutere and Tasman regions. You make the newsletter an interesting read!

There is no cost to having your articles published but if you are telling the community about a commercial or fundraising venture, we do appreciate a small donation to help us cover our costs—see above for bank details.

Archived coloured copies of the Grapevine are available at www.mouterehills.org.nz/community/the-grapevine courtesy of the Moutere Hills Community Centre Staff.

Grapevine circulation is 1300 copies. This issue has been constructed by volunteers: Miriam Lynch, Tanya Doty, Beverley Sellers, Sharon Beaked, Avril Stephens and Heather Eggers.

Views expressed are not necessarily those of the voluntary editors and no responsibility is taken!



Community	3-5
Letter to the Editor	6
Sports & Recreation	7-8
Arts	9
Kids corner	11
Animals	12-13
Gardening	16
Food & Drink	17
Health & Wellbeing	20-22
Trade/Professional Services list	23

SPECIAL POINTS OF INTEREST:



Murder in the Moutere, 29 October—page 8

River Health Roadshow, 1 November—page 4

Garage sale, 5 & 6 November, page 3

Quiz nights, 12 & 13 November—page 7

Ruby Coast Arts open studios, 12 & 13 November—page 9

Motueka Garden Trail, 12 & 13 November—page 5



Jason Frater
BUILDERS LTD

BUILDING OUTSIDE THE BOX



Ph: 021 743 497 AH: 03 528 0337
Email: info@jasonfraterbuilders.co.nz
www.jasonfraterbuilders.co.nz



Country Cuts
Hairdressing

Karen

For all hairdressing services

14 Kelling Road
Upper Moutere 7175
(03) 5432297 or 0274 728863

Phone or email for an appointment
k.j.rhind@xtra.co.nz



Hon Damien O'CONNOR
MP for West Coast/Tasman

0800 DAMIEN (0800 326 436)
Facebook: [damienoconnormp](https://www.facebook.com/damienoconnormp)
damien.o'connor@parliament.govt.nz



Labour

Authorised by Damien O'Connor MP, Parliament Buildings, Wellington

MAUREEN PUGH
NATIONAL LIST MP BASED IN
WEST COAST-TASMAN



I am always happy to help

p. 0800 MAUREEN | w. www.maureenpugh.co.nz
e. maureenpughmp@parliament.govt.nz

Funded by the Parliamentary Service and authorised by Maureen Pugh, Parliament Buildings, Wellington

National
www.national.org.nz





The Social Group

Meets at the Sunday School Hall (Upper Moutere Lutheran Church) on **Thursday afternoons at 1.30pm each fortnight.**

Join in games and cards. Enjoy our afternoon of fun and fellowship. All welcome.

Contact Brian or Lois Eggers ph 5432 871.



Pastel Artists of New Zealand (PANZ), Nelson Region

Oh my ... will someone shut off the water works!! I know we really will be begging for it when summer comes but the gardens are so soggy and we all know how rain, day after day is not so pleasant. Thank goodness our Tuesday pastel painting group isn't dampened (pun intended) by the rain. What a nice thing to do on a rainy day or more pleasantly, on a sunny day.

The group is looking forward to a 2-day workshop over the Labour weekend with an Australian Master Pastellist, Tricia Taylor, who is making her way around New Zealand sharing her exceptional skills. No matter how long you have been painting, you can never stop learning.

Recently, Impressions in Richmond held an exhibition called 41 MAX at their shop. PANZ, Nelson Region was very well represented with Anny de Groot, Anne Bannock, Betty Salter, Alice Reade and Glen Davenport all making the cut. Well done!

We always welcome visitors to our sessions, so if you are a new artists or someone who has painted before and wants to revisit your talents feel free to stop into the Mapua Hall on a Tuesday morning between 9am and noon or call our Area Rep, Glenys Forbes, 03 540-3388 for further information.

WANTED

Awesome local family urgently require 3 bedroom home to rent in the wider Moutere Tasman area. Please contact Clare on 0211464971 if you can help.



GIGANTIC GARAGE SALE!

Sat 5th & Sun 6th November

8am- 4pm

2077 Moutere Hwy

(Opposite the end of Harley Rd)

**Lots of household items • furniture • farm supplies
orchard equipment • appliances • clothing • linen**

Mapua and Districts Business Association



The MDBA has been active in our local Ruby Coast and Moutere Hills region since 1992. Membership is open to any business person who operates a business in the area or lives locally and has a business outside the area. The Association's membership is interesting because of its diversity - there are those with businesses that are visible in our communities, but there are also many owner-operators who do a wide range of interesting work that goes beyond our local region to the wider Nelson Tasman district and also nationally and internationally.

The MDBA offers its members:

- A variety of member meetings and networking events,
- Business development seminars, workshops and courses,
- Promotion of local businesses and the Ruby Coast and Moutere Hills region. This includes the production of a visitor map each year (12,000 will be printed for this coming summer season),
- Opportunities for businesses to promote themselves to the wider community,
- An extensive website offering visitor and community information and free business listings for members,
- Production of the annual Community Directory which is delivered free to all households in the area,
- Member only advertising opportunities in the Directory,
- Support to community initiatives and events such as the Unicycle Fun Day, the Sarau Festival, the Great Taste Cycle Trail, the Gateway Sculpture Project and the Welcome Bag Project.

Currently the annual membership fee is a very reasonable \$75 (in GST). If you are interested in finding out more about becoming a member, please feel free to contact Janet, our part-time coordinator, at coordinator@rcmh.co.nz or 540 3364. Or visit the website www.rubycoastmouterehills.co.nz



COMMUNITY

From the Moutere Hills Residents Association

Dear Members and Community.

You can now take part in our **online survey** regarding the **Moutere Hills Community Pathway**.

The purpose of this survey is to determine top priorities for the proposed pathway as seen by the community. This will help us during the planning stage and might influence route-finding.

So if you have not already used our paper form at the AGM, take this chance to have your say now - *it only takes one minute!*

You can also use this form to let us know in case you can make any contribution to the project such as labour or materials, machine time, or help with planning.

All feedback is much appreciated.

Go to the survey at: <http://www.mhra.org.nz/pathwaysurvey>

Best regards,
Matthes Bender

Secretary
Moutere Hills Residents Association
<http://www.mhra.org.nz>



MOUTERE HILLS COMMUNITY PATHWAY - SURVEY

Have your say on the proposed pathway by answering the questions below.

Let us know what you think would be most important for a walk and cycle track from the village to the community centre.

Take this survey online at
www.mhra.org.nz/pathwaysurvey

The Pathway should...

- Run in a quiet location away from the main road.
☐ Very Important ☐ Desirable ☐ Somewhat Desirable ☐ Not Important
- Take the most direct and shortest possible route (noting that all possible routes would be under 2.5km).
☐ Very Important ☐ Desirable ☐ Somewhat Desirable ☐ Not Important
- Avoid crossings of 100 km/h roads as much as possible.
☐ Very Important ☐ Desirable ☐ Somewhat Desirable ☐ Not Important
- Avoid crossings of 50 km/h roads as much as possible.
☐ Very Important ☐ Desirable ☐ Somewhat Desirable ☐ Not Important
- Run flat and level (try to avoid even moderate grades).
☐ Very Important ☐ Desirable ☐ Somewhat Desirable ☐ Not Important
- Connect directly to existing footpaths in the village (avoid having to walk along existing side roads).
☐ Very Important ☐ Desirable ☐ Somewhat Desirable ☐ Not Important
- Allow children to walk and cycle safely between the School and the Community Centre.
☐ Very Important ☐ Desirable ☐ Somewhat Desirable ☐ Not Important
- Allow children (e.g. from Kelling Road) to walk and cycle safely between home and school.
☐ Very Important ☐ Desirable ☐ Somewhat Desirable ☐ Not Important
- Connect to the childcare centre (Country Kids).
☐ Very Important ☐ Desirable ☐ Somewhat Desirable ☐ Not Important
- Follow a scenic route with nice views and high recreational value.
☐ Very Important ☐ Desirable ☐ Somewhat Desirable ☐ Not Important
- Have picnic areas and rest stops.
☐ Very Important ☐ Desirable ☐ Somewhat Desirable ☐ Not Important
- In the future connect to other walk or cycle tracks.
☐ Very Important ☐ Desirable ☐ Somewhat Desirable ☐ Not Important

I can contribute to the project with the following

- | | |
|---|--|
| <input type="checkbox"/> Materials (e.g. gravel, timber, fencing, plants) | <input type="checkbox"/> Machine Time (e.g. digger, grader, truck) |
| <input type="checkbox"/> Expertise (Planning) | <input type="checkbox"/> Labour (e.g. fencing, working bees) |

Please specify: _____

Other comments: _____

Contact Details (optional)

Name: _____ Email: _____

Please return completed forms to: feedback@mhra.org.nz or do this survey online at www.mhra.org.nz

Moutere Hills Residents Association Incorporated, 164 Neudorf Road, RD2, Upper Moutere 7175

Sarau Festival 2017 is coming up!!

To make this another fantastic Moutere event we need your help and support

Please let us know if:

- you have an idea to include in the Sarau Festival
- you think we do something well, and could expand it
- you have (a little) time to help with organisation before the Sarau Festival

To make this another truly amazing Moutere event, and help raise funds for the Moutere Community - join the crew and have good fun!

Please contact Jenny at jenny@saraufestival.co.nz or phone: 9700 715

Come along to our first meeting on **Monday 31 October at 7.15pm** at the wonderful Moutere Inn - our first generous sponsors every year!



River Health Roadshow and movie about who is helping the waterways in Tasman – 'Our waters in Common' with Trevor James (Resource Scientist – Freshwater. Tasman District Council)

November 1st 7.00pm

Moutere Hills Community Centre

Are you interested or worried about a local stream or river? Have you wondered if your favourite swimming hole is safe? Would you like to know how to help? If yes to any of these – then don't miss this informative free evening.

Many thanks.

Claire Webster

Education and Partnerships Officer

DDI 03 525 0050 | Claire.Webster@tasman.govt.nz

PO Box 74, Takaka 7142, NZ



There are plenty of things happening at St Paul's in the coming months.

We are sad to announce that Pastor Chris has accepted a position at a church in Australia. Pastor Chris has served in Upper Moutere for six years and together with Haidee and their kids have become a big part of the Moutere Community. His final service will be at 9:30am on Sunday Dec 11th and afterwards we will be having a pot luck lunch. We wish to invite anyone who would like to farewell Pastor Chris, Haidee and their kids to join with us on this day.

Automated External Defibrillator (AED)

The Church recently purchased an AED that will be able to be accessed 24/7. We have placed this on the western end of the church building. We would like to thank all those in the community who supported us in the purchase of this device and would like to welcome anyone who would like to contribute to contact us.

Reformation Tree

October 31st, 2017 marks the 500 year anniversary of the Reformation. On this date in 1517, Martin Luther nailed his '95 theses' on the church door at Wittenberg, which is regarded as the start of the history changing event. Over the coming 12 months, we will be celebrating this event with churches from all around the world.

In Wittenburg, Lutheran Churches were invited to plant a tree as a part of this celebration in what has become known as the Luthergarten. As a part of this, on October 30th, we planted a 'Reformation Tree' at the western end of the church building, which signifies our special place in New Zealand Lutheran Church history.

Christmas Services

As we prepare to celebrate Christmas again, we're excited to offer the following opportunities for you to gather together and celebrate Christmas with our friends and family.

Carols in the Church Sat Dec 10th 7:00pm

Join us in the historic St Paul's Lutheran Community Church building for an evening of carols and a provided supper after.

Carols in the Vineyard Sun Dec 18th 7:00pm

Held at the beautiful Neudorf Vineyard, bring a rug and a picnic as we celebrate Christmas with the band from St Paul's. The cellar door will be open and Millie and Bonzo will be here to share with the kids. Moutere Hill Community Centre is the wet weather venue.

Christmas Eve Service Sat 24th 7:00pm

Held at St Paul's, this service is always a hit as we let our kids loose to teach us the Christmas account.

Christmas Eve Reflective Service Sat 24th 11:15pm

Held at St Paul's, we invite you to come and take some time out as we quietly reflect on the meaning of Christ's entry in our world. We finish at midnight as we welcome him.

Christmas Day Service Sunday 25th 9:30am

Happening at St Paul's, our Christmas day service celebrates what we've been preparing for: Christ's coming into our world.



We hope to see you over this Christmas season.

St Paul's

Upper Moutere

Volunteer Fire Brigade

Call Outs

Callouts from the 16th Sept to 15th October:

- * 3/10 Alarm activation Mapua bounce child care centre
- * 4/10 Kitchen fire, Crusader Drive Ruby Bay
- * 7/10 Chimney fire, Dominion road (turned out to be a hail cannon activation)



Motueka Garden Trail

2016

12 & 13 November, 10am - 4pm

SPOT PRIZES PLANTS FOR SALE RAFFLE FREE TEA & COFFEE

All proceeds go to the Motueka District Toy Library.

For further information please contact Linda on 021 054 8919 or see www.facebook.com/motuekagardentrail

\$15 TICKETS
CASH SALES ONLY

From: Motueka District Toy Library | Mitre 10 Motueka
Potters Patch, Motueka | Founders Brewery & Cafe,
Nelson | McGlashens Pharmacy, Richmond
The Plant Barn, Motueka | Tessa Maes, Mapua

PROUDLY SPONSORED BY **specialisedprint**

Motueka District Toy Library



LETTER TO THE EDITOR

My name is Ben Karalus. I'm an 18 year old mountain biker from Nelson, currently studying Engineering at the University of Canterbury. Recently I was lucky enough to be awarded the Sarau Scholarship, which is available to support sportspeople from the Moutere area to represent New Zealand overseas. I applied for the scholarship to help me get to Europe to race in the final World Cup round in Vallnord, Andorra and the World Champs in Val di Sole, Italy, after being selected for the NZ Junior Downhill Team.

I travelled with another local downhill rider, Oscar Perks, from Brightwater. We left the country on the 27th of August, flying through Auckland, Shanghai, Vienna, and on to Milan in Italy, where we planned to hire a car and drive to Andorra. When we arrived in Vienna we found out that 30 flights were being cancelled including our connecting flight to Milan because of air traffic control problems, leaving us stranded at Vienna airport. We came up with an alternate plan and after staying the night in Vienna, we drove around 2000km from Vienna to Andorra over 2 days. This presented us with its own challenges, including a no-show from the owner of the accommodation we were planning on staying at on the second night, resulting in us finding emergency accommodation in a local castle! However, we finally arrived in Andorra, just in time to register for our first competition.

The race in Andorra was eventful. The track was similar to what we ride in New Zealand, and everyone enjoyed the track. The dust on it was unbelievable, and it made turning and braking an issue. It was a steep and challenging track which had you struggling to hold on by the bottom, but it was so much fun and in such a beautiful location that it left you always wanting to do one more run. To make the final race run you had to qualify in the top 30 riders. Unfortunately in my qualifying run, I caught up to the rider in front for the bottom quarter of the track, and despite my best efforts I was unable to pass as the dust was too thick and the crowd was too loud for him to hear me. I ended up 2.5 seconds outside of the qualifying cut off, which was a massive disappointment. I moved on and took the race in as a spectator during finals, which was hugely enjoyable in its own right!

The day after the race we started the 800km drive across to Malpensa Airport in Milan, where we were meeting with the other members of the New Zealand junior team travelling over to race at the World Champs. By this point, long days of driving had become the norm, so it felt like no time at all (in reality, two days) until we were at Malpensa, meeting up with the team and picking up the vans. The plan was to drive to Val di Sole that night and get to our accommodation. We ended up waiting until 5pm to pick the last member of the team up. Along the way we found a beautiful lakeside town, called Iseo, where we dined out on Pizza in front of an absolutely incredible sunset. We eventually arrived at our accommodation in Val Di Sole at 11pm. We had a spare day before the event kicked off, so the team that was present took it upon ourselves to go and scope the course out on some rental e-bikes from a village further down the valley.

The World Champs has always been the jewel in the crown of mountain biking, and this year it was no different. The event kicked off with an extravagant opening ceremony that ended with a 30 minute fireworks display befitting of an event more like the Olympics. After the memorable opening ceremony, the event got underway with the track walk taking place the next day. People were commenting on the track as one of the toughest yet – it was steep, rocky and unrelenting. Come race day 3 days later it was incredible to see the change that had occurred on the track since we first walked it. No rain had fallen in Val di Sole for several weeks, and the dust on top was quickly wiped away by tyres, revealing a mess of rocks, roots and holes to navigate. Seeding the day before had shown a lot of the Juniors where we stood against the field, and dropping in to my race run I had high hopes of a top 30. In the first 30 seconds of my race run, my derailleur decided to fracture, unscrew itself and wrap around my seatstay, causing a huge amount of damage to the rear end of my bike leaving me stuck with my opposite foot forward, unable to pedal or move my cranks. This was devastating for me, as I was hoping after the disappointment of the last weeks hold up that I would be able to have one good shot at putting down a solid run on European soil. However, I got down the track and crossed the line in 46th place out of 75 riders. Oscar came in 49th, also disappointed with his race but having caught the attention of photographers with an impressive crash.

This trip overseas to race taught me a lot of things. The main lesson learned was that despite your best efforts, there's a lot that can happen to prevent things going to plan. While results can be disappointing at the time, dwelling on it doesn't help and won't change things, and its best to keep positive and focus ahead. It was also amazing to be exposed to different cultures and the different way of life that each European country had to offer.

I'm really grateful to the Sarau Trust for their support to enable me to get overseas and ride at the World Champs. Opportunities like these only come around once or twice in your life and it made a big difference to have this support. Thank you! I would also like to take the opportunity to thank the other Nelson-based companies that helped me with this trip; Switch Lighting, C&F Legal, Edrises Contracting and Chings Contracting. A special thanks also to the team in at Village Cycles who have supported me in my mountain biking endeavours for so long. Lastly, a huge thanks to my dad for coming along to support us and help us travel and race.

Cheers everyone!



Image by Zach Faulkner



MAPUA BOWLING CLUB

THE WRITE BIAS

Spring showers are a mixed blessing. They keep the bowling green watered well but also can mean cancelled play when the green is too wet. Unfortunately, the season Opening Day had to be postponed a few days because of rain. But happily the sun shone on Tuesday 4 October as President Dave England welcomed the Mapua Bowling Club members to the start of the new season.

The season will be busy from the start. Roll-ups are held at the Club every Tuesday, Thursday and Saturday afternoons beginning at 1:15pm. The Club has entered a Mapua team in the Presidents Cup, a Nelson Centre tournament series held on Saturday mornings. The Club will also be entering teams in a number of open tournaments held at various clubs in the Nelson area during November and December.

The Mapua Bowling Club will be holding a 'Bonfire Bash' on Guy Fawkes Day, the 5th of November. Members will enjoy an afternoon of bowls competing on either the Captain's or President's team. Drinks and afternoon tea will follow.

Have you been looking for an evening activity to help unwind after work? Or maybe you are someone who prefers bowling in the cool of the evening. In either case **Leisure Bowls** might just be what you are looking for.

Leisure Bowls (previously known as League Bowls) starts on **Monday 31st October** at **6 p.m.** These sessions are open to new and existing bowlers with both friendly and competitive play. There is no need to pre-book; just turn up on a **Monday evening** and give it a go. Flat-soled shoes are essential to protect the green, but there are plenty of sets of bowls to borrow at the club and the bar is always open. Cost for the whole season is only \$42.50 or you can pay a weekly fee of \$5. Why not give it a try?

For information about bowling, coaching or booking the clubhouse and facilities please call President Dave England 03 540 2934.



Est. 1850

Moutere Inn

New Zealand's Oldest Pub



What's Happening In November



Quiz Night fundraisers 7pm Saturday 12th and 19th

We will be hosting Quiz nights to raise funds for youth athletes going to the National Athletic Champs on the 12th and for Lower Moutere School on the 19th. Both nights will include loads of great raffles and spot prizes. Check our Facebook page or website for details.



Whisky Tasting Thursday 7pm Thursday 17th

Whisky Galore from Chch is hosting a special tasting and chat. Six whiskies covering a range of styles. \$55pp, bookings essential.



Live Music 7:30pm Friday 25th "Fig Jam"

Classic sounds from the 60's to the 2000's, the songs you know & love.



Fine Dining Evening 7pm Saturday 26th

We will be offering a relaxing evening, of fine dining, over five courses. Bookings essential check our website for menu details.

Don't Forget

1 st Thurs Folk Night	This month the 3 rd
2 nd Thurs Quiz Night	This month the 10 th
3 rd Thurs Curry Night	This month the 17 th
4 th Thurs Cigars and Whisky	This month the 24 th

PHONE 5432 759

WWW.MOUTEREINN.CO.NZ

FACEBOOK/MOUTEREINN

1406 MOUTERE HIGHWAY, UPPER MOUTERE 7175

Simplicity Funerals

Simply respectful. Simply affordable.



Planning for the future...

Simplicity Funerals Nelson have an information pack entitled "My Life, My Funeral" which contains a number of pamphlets with information about pre-planning your own funeral, and an application form for the FDANZ Funeral Trust.

This is a useful tool for all of us as we plan for our future. Much like making a Will, completing the information on the form provides peace of mind to families when faced with bereavement.

Contact us for more information or to receive this free information pack.

69 Haven Road, Nelson 7010
www.simplicity.co.nz

03 539 0066





MOUTERE HILLS COMMUNITY CENTRE



CHAIRMAN'S REPORT

The 2015/16 year has been a period of very positive consolidation in both the usage of the Centre, and our financial position. Usage by local clubs has increased and we have many active and well-run sports clubs and other groups using the Centre regularly. New recreational groups are making our Centre their base, and we had increasing numbers of 'outside' bookings for functions and meetings. We are actively marketing the Centre to achieve more paying usage, and to this end we now have a Functions Co-ordinator to work alongside Katrina and Vanessa. Once again we have had outstanding effort from our staff over the past year who have made valuable contributions to the successful running of the Centre. Special thanks for the financial support we have had from TDC, The Rate Foundation, The Greenough and Hyatt families, The Sarau Trust, Lottery Grants Board and the specific fundraising at Sarau Festival and the Quiz evening. This has all lead to a healthy financial position at balance date. The Fitness Centre is proving to be a very important investment, and we have plans for additional playground equipment and some more landscaping. We are always open to suggestions for more facilities for activities and recreation, and the recent survey conducted has confirmed our immediate priorities. I wish to thank our faithful and resourceful staff for their efforts, and my fellow Board members for their positive attitude and efforts. Special thanks to Steve Mitchell who has stood down from the Board. And thanks to you, the Community, for your continued support of Moutere Hills Community Centre.

Phillip Leith—Chairman



SHINE YOGA

Breath and Movement for Calm Energy, Strong Body, Focused Mind
Thursday's 9.30—10.45am

Astanga, Iyengar & Restorative Yoga inspired class for all levels - beginners welcome!
Simply turn up and join this relaxing session of Yoga.



CHRISTMAS COUNTRY MARKET

Here at MHCC we are looking at organising a Christmas Shopping Market to enable all us busy folks to buy unique, local gifts for our family and friends this Christmas right here in the Moutere. We are seeking local businesses, craft people, service providers, and any other local producers who would like to be a part of this.



Saturday 10th December from 4pm.

Cost of a stall \$10



To register your interest please contact us on 5432516 or functions@mouterehills.org.nz



MURDER IN THE MOUTERE - Murder Mystery Dinner

Saturday 29th October

6:30pm—10:30pm

\$45 per person

It's the eve of Halloween and anything could happen Join us for Halloween in the Moutere for nibbles + a 2 course buffet meal and a live interactive show where you help solve the mystery. Guaranteed to be a "frightfully" good night out!!

You are welcome to get a group of friends together and book a table.
Tickets available from MHCC office or by emailing enquiries@mouterehills.org.nz



Phone: 543 2516

Email: enquiries@mouterehills.org.nz

Website: www.mouterehills.org.nz





RCA OPEN STUDIOS	ruby coast arts
------------------------	-----------------------

What?

Local painters, sculptors, glass artists,
potters and makers welcome you into
their working spaces and studios

Where?

Follow the Arts Studios trail from Mahana,
through Mapua and Ruby Bay
to Tasman (or the other way!)

When?

Saturday 12th and Sunday 13th November
11am to 4pm both days

Maps?

Trail Maps available from Mapua Library, Mapua
Village Bakery, Jellyfish Café and Bar, Motueka
I-site or download an A4 map from

www.rubycoastarts.co.nz

Eggers Hops

New Hop Farm Development. Harakeke, Moutere Valley.

We are in the process of setting up a new Hop Farm.
We need workers - now and seasonally.

Situations vacant / Workers wanted.

Permanent: *18 to 25...or older.* This position will suit younger person interested in learning Horticulture with a possible apprenticeship through ITO. We need a strong, energetic and diligent person who learns fast, has good thinking and communication attributes.

Permanent: *Experienced.* Older tractor driver/general worker. Best with nuts and bolts experience. Remuneration negotiable.

Casual: Suit locals, semi- retired to be on call as needed to do the odd cruisy job.

Dec: Plant potters to work in a team. Suit those who can work on a production line filling pots and placing young plants. No heavy lifting for this job. Job share possibilities so 1/2 day possible. Some field planting starting late **Nov.**

Dec: Weight lifters/pot droppers. This job involves moving 4kg Pots from bench height to ground. Must be physically fit.

Dec-March: Plant attendants to look after plants in field nursery as well as white house.

March-July: Hop Garden constructors. Wire work, irrigation installation.

Aug-Oct: Planters for field planting operation using mechanical planter.

Sept-Oct: Stringing gang. Wages plus contract rates.

Oct-Dec: Trainers. The process of wrapping young vines onto the strings. Contract rates.

March 2018: Tractor drivers, Machine operator, Balers. These are easy jobs.

**Living wage available.
Contract rates where operable.**

**If you or someone you know are interested then please phone us now on
(03)543.2350 or 027.657.7525**



Andrew Prouting (Chops)

M 027 305 2412

P 03 543 3613

E chopsfencing@gmail.com

*To view our work visit Chops Fencing
on Facebook*

- Complete Fencing Services •
- Post Driving • Pailing Fences •
- Rural Fencing • Pea Straw •
- Log Splitter •



**Fully Equipped
Automotive
Workshop**

**All Makes
& Models**

**6 Courtesy
Cars**

W.O.F.

**20 WARREN PL, MAPUA
PH 03 540 2180
mapuaauto@mapua.biz
www.mapua.biz/mapuaauto**





Well, here we are in the last term of 2016.

The students and teachers are back refreshed after the holidays.

This term brings about the Masked Parade, held as part of the Nelson Arts Festival. Tasman School enters this great event every two years – having taken out the supreme award last time. So, the school is in full swing again, with each child creating their own mask, ready to hit the streets of Nelson on Friday, October 21st.

Also this term is the Mouere Hills athletics day. This is an annual event, with six schools taking part. Preparations for this are under way, with classes out practising for the various events. It is a great family day, held on the Saturday closest to Armistice Day (November 11th).

Mouere Community Youth 2016

Sept/Oct School Holidays

Mouere Youth enjoyed the second week of the school holidays doing some different activities in the region...

- Billy had trouble keeping up with some seriously fast senior youth boys mountain biking in the Richmond Hills.
- We woke a Kereru having a very long sleep-in in a tree right next to the Little Lost Crag we were climbing at Paynes Ford.
- We found 20 odd geocaches in UMO, Mahana, Mapua, Ruby Bay and Motueka. Favourites were some hiding at 'eye level', "whose eyes?" asked the shortest person in the group. Check out www.geocaching.com
- The last day was at Rabbit Island where we split into four groups and had two hours to complete the orienteering course, racing the others. We also had time for some beach fun before jumping in the vans and avoiding the hailstorm by a whisker.

Thanks to the youth who came along - we had a great time!

Pump/Bike Track

Remember the BMX track that was set up many years ago? This has come to the end of its life for various reasons. We plan to dig it up and move it up the hill to beside the skate park and create some big jumps, and also a pump track. There are some keen youth in the community ready to help shape this track. The more the merrier, look out for some working bees and bring your spade...

QUESTIONS?

Tessa - 022 101 2276/Billy - 021 027 28825

mouereyouth@gmail.com

UPPER MOUERE play group

WE MEET EVERY FRIDAY 10am-12PM
MOUERE HILLS COMMUNITY CENTRE.

WE PROVIDE AND SHARE MORNING TEA.
POP IN FOR A CUPPA WITH LOCAL PARENTS!

ANY QUERIES PLEASE CONTACT
ANNA 021 262 6675 OR JOSI 027 374 8223

ALL FAMILIES WELCOME!

Mouere Community Youth 2016

NOVEMBER

JUNIOR YOUTH

Fridays/3:30-5:30pm/Year 5 - Year 7/\$2/meet at UMO church hall
**Come early after school for afternoon tea, gold coin donation*

- | | |
|----|---------------------------|
| 4 | Kick the Bucket & more... |
| 11 | Bigger & Better |
| 18 | Choose your own Adventure |
| 25 | 10 Pin Bowling |

INTERMEDIATE YOUTH

2nd & 4th Fridays/6:30-8:30pm/Year 7 - Year 9/\$2/meet at UMO church hall

- | | |
|----|----------------|
| 11 | Nerf Wars |
| 25 | 10 Pin Bowling |

Senior Youth

1st & 3rd Fridays/6:30-8:30pm-ish/Year 9 - Year 13/\$2/meet at UMO church hall

- | | |
|----|----------------|
| 4 | Sports at MHCC |
| 18 | Car Gymkhana |

QUESTIONS?

Tessa - 022 101 2276/Billy - 021 027 28825

mouereyouth@gmail.com



Hello Animal Lovers

As the weather gets warmer and the days longer thoughts often turn to getting out more with our animals. Many horses are being geared up for the show season or riding club events. However there is a serious development which has come to light regarding control. Crank nosebands which are so common and sold frequently through on line and saddlery shops have been found to cause not only distress but physical damage to horses. Sydney University Faculty of Veterinary Science reported recently that crank nosebands and even caveson and flash bands will cause an increase in heart rate and higher stress in horses even when they do not have the pressure of reins. So many riders tighten their nosebands in order to get control but it is a cruel and unnecessary thing to do and can have the opposite effect. Horses and ponies in pain and distress will try to get away from the pain. They will either do this by bending their heads toward their chest or running forward to attempt to escape. In ignorance it is often perceived that a horse with its head bent to its chest is desirable and many riders try to force this to happen. Sadly if the practice continues many horses just switch off and real damage occurs whilst the horse shuts down.

When I was a young child who always loved horses I watched many westerns on television but was always horrified to see how the horses' heads were pulled around by the cowboy actors, the horse clearly in pain and distress. Contrast that with horses ridden freely with no bridle or tight noseband and the difference in the behaviour of the horse is obvious. Thankfully there is now a growing movement to have crank nosebands banned but it would be nice to see judges and instructors rewarding horse and rider combinations where the horse is moving freely and happily and the noseband is correctly adjusted.

Finally it is a lot safer to have a happy and willing horse that is not in pain. They are better to ride, more reliable and are obvious examples of the maxim: adrenalin up, learning down; adrenalin down learning up. Our horses are such willing, sensitive partners who, treated with respect and love, will return it many times over.

As always happy to answer animal behaviour questions,

Sue Mott
Animal Behaviourist
038700952



TASMAN EQUINE THERAPIES

Fiona Ramsay

Advanced Equine Body Worker

Physiotherapeutic Remedies for Horses

Sports Performance Therapy, Injury Repair/Rehab, Equine Bowen

Qualified Professional Services

027 452 3906



Kenmore Farm

Old House Rd, Upper Moutere

Producing quality.....

WILTSHIRE SHEEP * SANEEN GOATS * LAVENDER

Consultation in ***Lifestyle Block Animal Health Care * &**

Natural Equine Hoof Care Practitioner

HOOFNZ Course Trainee Affiliated

Enquires welcome 027 405 4892 jspenno@hotmail.com

or visit us on www.facebook.com/KenmoreFARM



Shearing, crutching & sheep care
Specialising in
LIFESTYLE BLOCKS
Portable machine + Generator

SUE THE SHEARER

RING FOR A NO OBLIGATION QUOTE

Ph 021 533 350

Horse Cover & Gear Repairs

Horse Cover Washing

Prompt Service

Good Rates

Contact Lawrie

1350 Moutere Highway

Ph: 03 543 2234

021 208 2192



HORSES AND ALL THINGS SPRING

Spring has sprung and, from an equine point of view, there are some key things to consider. These include vaccinations, dentals, feeding, worming and, for some, foaling.

VACCINATIONS

Ensure vaccinations are up-to-date. The main two are:

- * Tetanus - caused by *Clostridium tetani*, an anaerobic bacterium found in the soil which can contaminate wounds and cause tetanus. If your horse gets wounded and is not vaccinated we can administer an antitoxin that will prevent tetanus, however prevention is a lot more effective.
- * Strangles - caused by *Streptococcus equi* and presents intermittently, often when the herd vaccination status lowers. It results in abscessation of the lymph nodes around the head and spreads very quickly via respiratory secretions.
- * Other potential vaccinations to consider include Equine Herpes virus and Salmonella.



DENTALS

Dental examinations are required every six to twelve months depending on your horse's age, conformation and their oral history/existing problems. Signs of dental disease are often very non-specific but can include head shaking/tossing, problems during riding, and difficulty eating. Potential issues should be checked immediately as lesions can progress rapidly and result in things such as facial swelling, oral ulcers and tooth root abscesses - all of which can be extremely painful.

FEEDING

As the weather changes so do the metabolic requirements of horses; therefore, their feed needs to alter accordingly. During winter decreased grass growth may mean their diet requires supplementing with fibre (such as hay, chaff or balage) and additional energy (especially for older horses), or less energy for those which are exercising less or "easy doers". Horses require at least two percent of their body weight as fibre daily which equates to 10kg of hay for a 500kg horse so, if their grass intake is low, additional fibre may be required.

Hay is also a valuable substitute for grass when horses are suffering from laminitis. Laminitis is often the result of metabolic disease and, with the "spring flush" of grass, intakes (particularly of ponies!) need to be managed to ensure excess sugar intake doesn't result in an acute laminitic episode.

It is also important to ensure horses are receiving enough vitamins and minerals, especially selenium. Contact the clinic for more advice on selenium blood testing, feed options and prevention of metabolic disease.

WORMING

In spring all horses need to be wormed as they are at risk of cyathostomosis which occurs as the larvae emerge in response to stress and warmer weather. For more information and/or to plan an individualised annual worming regime appropriate for your horse(s) don't hesitate to talk to the team in at the clinic.

FOALING

It is an exciting time of year and planning is required, for both mare and foal, to reduce the likelihood of any problems. Aim to have pregnant mares in their foaling paddock one month prior to the event, ensure they are appropriately vaccinated and are fed well - use a product containing enough calcium and energy. Post-foaling colostrum intake, umbilical cord care and a general health check for both the mare and foal are important. Contact Mitch our equine Vet for more information.

Caring for all creatures Great & Small

We offer a standard visit of \$97.50 which is inclusive of mileage on Thursdays for pre-arranged calls.



CONDITIONS APPLY -Phone (03)5441200 for appointments and more information.

35 McGlashen Avenue, Richmond

25 Edward Street, Wakefield



www.tcvet.co.nz

TOWN & COUNTRY VET RICHMOND



Dog Wash K\$9000

Coin and note operated

Open 24 hours

7 days

EDWARDS LTD
COUNTRY BUILDINGS

Uniquely Crafted Homes & Outbuildings

We also specialise in:
BRICK & BLOCKWORK
RETAINING WALLS • FOUNDATIONS • DECKING
GARDEN WALLS • STONEMWORK

FOR HIRE: 2.5T Excavator / Tip Truck (Operator available if required)
Scaffolding (Supply & Erect / Supply only)

Call Tim 021 320 306

BUILDER AVAILABLE

- * Renovations, windows and door repairs
- * Kitchen and bathroom modifications
- * Tiling and gib stopping, etc.

Phone or text Steve on 021 0839 1206



architecture studio | mapua

design it - love it

Simone Wenk
Reg. Architect (Germany), LBP Design 2 (NZ)

03 540 3282 / 021 1049 039 | Shed 4, Mapua Wharf
simonewenk@xtra.co.nz | www.architecturemapua.co.nz




LEIGH BRIARS ARCHITECTURE

03 543 2667
021 215 0946
briars@ts.co.nz

RD 2 Upper Moutere
Nelson 7175




Graeme Smith (MNZIQS)
Independent Cost Plan



- Quantity Surveyor
- Construction Cost Planner
- Building Estimator
- Cost Management Consultant

**Residential & Commercial
Insurance Rebuild
Valuations**

Ph. 64 3 526 6772 Mob. 0210 444 097
E. graeme@costplan.co.nz
27 Goddard Rd. RD1 Upper Moutere, Tasman 7173

Richmond Office
203 Queen Street, Richmond
Office: 03 544 2900
Fax: 03 544 2909
sharon.dejong@summit.co.nz
www.summit.co.nz

Sharon De Jong
Sales & Marketing Consultant

Mobile: 0273 202 196

SUMMIT
REAL ESTATE LTD
LICENSED UNDER THE REAL ESTATE AGENTS ACT 2008



MyPersonalPlumber

Alex Bint
0800 444 343

027 542 4329
alex@mypersonalplumber.co.nz
www.mypersonalplumber.co.nz

1366 Moutere Highway,
RD1, Upper Moutere, 7173



Heine's

Cartage and Contractors

We have trucks, excavators, a dozer, a grader, and the expertise to do all your cartage, drainage, building site & foundation, roading, and subdivision work.



40 years of local knowledge

and experience in the transport and contracting industry

Phone Wayne on 03 5432 788

027 430 2725

Or call in at our workshop and office at

1455 Moutere Highway

(by the firestation)

UPPER MOUTERE

Harcourts

MyMove Mapua
Property Management



- Protecting your investment
- Maximising your return
- Sensible rates without compromise
- We look after your property as if it were our own!
- Also covering properties in Richmond & Motueka

Call Amanda James on 03 544 2065

Email amanda.james@harcourts.co.nz

www.mymove.co.nz | Licensed Agent REAA 2008



Friendly • Professional • Stress-free

Full & Part Time Lets Managed

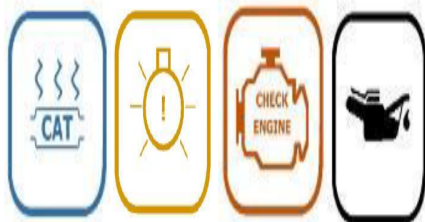
Mapua-based Managers

A friendly & professional service

Call Sian Potts on 027 296 8345

Email sian.potts@gmail.com

www.mapuaholidayhomes.co.nz



AUTOFIX CARS

* Vehicles Sales * Vehicle/WOF repairs & Servicing * Low mechanical rates

* Finance available for cars & repairs

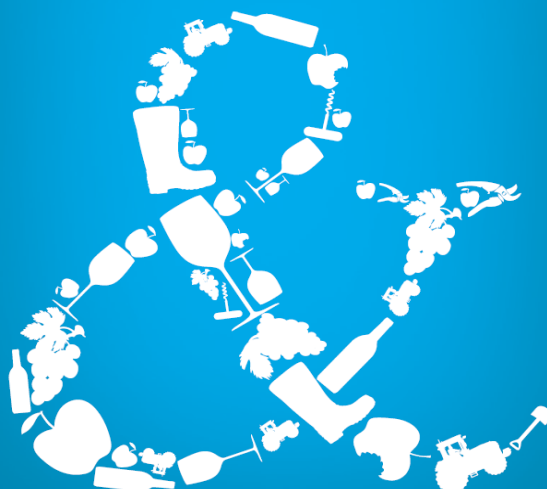
Check out our FB page for photos of the current vehicles we have in stock and our latest mechanical specials. Or come in to see us at:

6 Community Road, Lower Moutere (Riverside Community workshop)

Karl 0204 113 8667

LMVD. Finance Available. All cars come with a new WOF.

We can help your business grow



PITT & MOORE
LAWYERS AND NOTARIES PUBLIC

Nelson 03 548 8349
Richmond 03 543 9090
www.pittandmoore.co.nz
Low3KUnit



GARDENING

FOR SALE

Kowhai Trees
 2-3 yrs old, 1m tall
 \$10 each
 Ph: 022 4259 355



**Hardy
Landscapes**

Water Features
 Paving
 Rock Work
 Irrigation
 General Landscaping

Michael Hardy
Ph: 021 443 908
 A/H: 03 543 2555



Endurance spraying

**All types of weed spraying
 Gorse and Brushweed
 Control**

**Commercial • Residential
 Forestry Road Spraying
 Moss treatment for lawns,
 concrete areas and decks.**



Contact Pete Hughes
021-194 2654 A/H 03 544 2654
**Growsafe certified •
 Approved Handler**



Your Local Tree Specialists

- All work fully insured
- We cover all aspects of tree care from planting and reticulation systems, to tree management and hazardous tree removal

Ph: 0223 276 164

PEA STRAW

"The ideal garden mulch"

Suppliers of quality Pea Straw for the past 15 yrs

\$13 per bale

1290 Main Road, Upper Moutere
 Please phone to arrange collection
 Ph: 03 5432890 or 021 496 557

STRAIGHT UP FENCING AND CONTRACTING

RUSSELL LAWRENCE

027 5432016

tnrlawrence@gmail.com

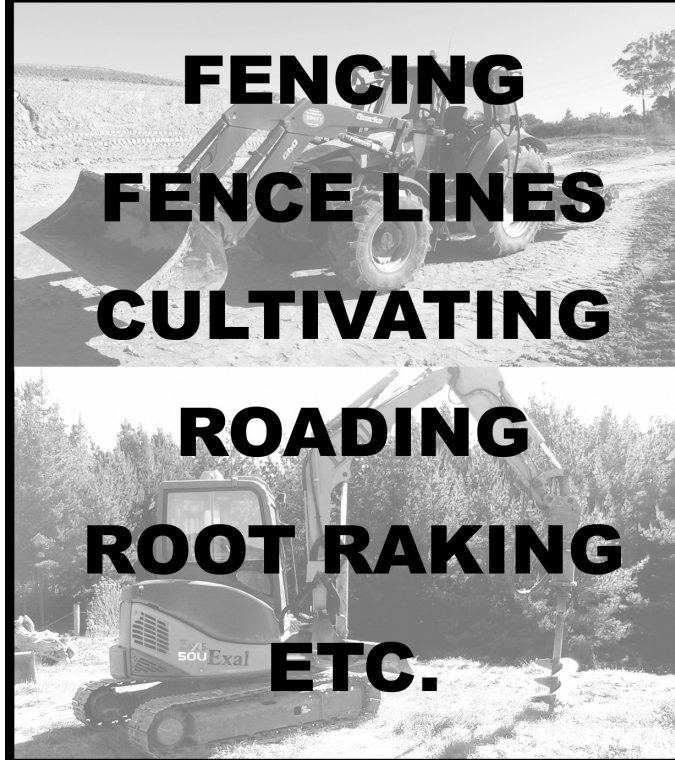
www.straightupfencing.co.nz



*Over 20 years experience
 in fencing and farming*

**FENCING
 FENCE LINES
 CULTIVATING**

**ROADING
 ROOT RAKING
 ETC.**





Asparagus is now poking its head above the soil so get stuck in and enjoy it while you can. Soo Gee gives us a couple of ideas to work with.



Cooking time for me is 2-3 mins in the microwave - just trim and lay in a microwave proof dish with a little water and a knob of butter. Fast and easy.

SPEEDY PASTA

Cook 200 gm dried fettuccine. Heat 1 tablespoon olive oil in a heavy pan. Add 200g each of raw prawns and asparagus, 1 clove of crushed garlic, zest of 1 lemon and cook in a high heat for 2-3 minutes.

Drain the pasta and toss in 100g soft cheese or sour cream, 2 tablespoons lemon juice and chopped parsley. Mix in prawns and asparagus, if it's too dry add a little of the pasta cooking water.



ROASTED ASPARAGUS

Trim the ends off asparagus, wrap in prosciutto or bacon, place in roasting dish with a little water and oil to coat, add some lemon zest and roast at 180c for 10-12 minutes.



THE RETURN OF THE **GIANT PUMPKIN COMPETITION**

- Registration \$5 includes a pumpkin seedling
- Judging takes place at 1pm, Sunday 26th March 2017
- Register in store or email info@mapuacountrystore.co.nz



FROZEN BERRIES

Boysenberry and Blackberry *good 2nds*

OCTOBER/NOVEMBER SPECIAL (while stocks last)

1kg freeflow packs, or 10kg bulk boxes
all \$5.00kg

Phone 5432888

Whole Barley 25 kg bags \$19 per bag including GST.

Barley crushed 25 kg bags \$22 per bag including GST

Phone 021 454 731 or 03 526 7004



FOOD • SKINCARE • GIFTS

OPEN DAILY

Shed 4 - Mapua Wharf
402/6 Aranui Road
Mapua 7005

Shop: (03) 540 2561
Cathie: 021 732 752

info@ketetasman.com

Shop Online: ketetasman.com

Showcasing the best of Nelson

A great job at a GREAT Price!

SUN ELECTRICAL

Phone: 03 540 2367

www.sunelectrical.co.nz

Tony: 027 3784 580

Troy: 022 080 4751

124 Aranui Rd
Mapua, Nelson 7005
sunelectrical@xtra.co.nz

Domestic
Industrial
Commercial
Caravan WOFs
Solar Power Systems

Our highly skilled and experienced electricians can provide solutions to meet your electrical needs

- New house/shed wiring
- Rewiring
- Alterations and repairs
- Hot water elements and thermostats
- Energy saving solutions
- Power bill forensics
- Garden and outside lighting
- Solar power systems
- Caravan electrical warrants
- Sewerage and pumping systems
- Test and tag
- Switchboard upgrades and replacements
- Oven and store repairs
- Urgent breakdowns
- Industrial wiring and maintenance

www.sunelectrical.co.nz

ECOMIST®
Enhancing your Environment



ECOMIST®
Enhancing your Environment

FLIESGone!
MOZZIES....Gone!
ANTS.....Gone!
BUGS.....Gone!

Automatic Insect Control Systems

SOLD HERE

Available from our stockists:

**Upper Moutere
Store**

03 54302758

**Lower Moutere
Store**

03 528 9529

Harcourts

Harcourts Mapua

"The Big Little Office"



Wendy Perry
Salesperson
027 249 1701



Sian Potts
Salesperson
027 296 8345



Lynn Remington
Administrator
03 540 3425

Harcourts Mapua - 2A Iwa Street - 03 540 3425

www.teamtasman.co.nz

Licensed Agent REAA 2008

GELLING

CONTRACTING

LIMITED

Earthmoving Contractor

- Site Clearing & Foundations
- Driveways & Trenching
- Water Delivery
- Gravel & Landscape Supplies
- Ditch Cleaning
- Available in your area



Pat Gelling 027 246 0953

gellingcontracting@xtra.co.nz



e: eggersbuild@ts.co.nz
m: 027 446 0739
t: 03 543 2757
f: 03 543 2823

76 martin road
rd2 upper moutere
nelson 7175

Call Andrew on 027 4460 739 for a quote or estimate on your next project



www.facebook.com/andreweggersbuilders



Accountancy A to O Ltd

Douglas Strong

Retired Chartered Accountant

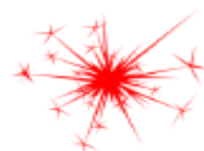
Janine E Maritz

Dip Bus. Dip Accounting

For All your Accounting Requirements

91 Neudorf Road,
Upper Moutere, 7144
PO Box 26,
Upper Moutere, 7144

Phone: (03) 543 2933
E-mail: jdoug@xnet.co.nz



MAID IN MAPUA

Cleaning service for homes and holiday homes in Mapua and surrounds.

Freeing up your time to enjoy the finer things in life.

Basic Clean:

Bathrooms and floors

Full House Clean:

Including linen and washing

Holiday Home Service:

Exit and Entry cleans (incl lawns)

13 years domestic and commercial cleaning experience. Thorough and high standards of cleanliness upheld. Great references available.

For enquiries, quotes or a reference call Janine 020 401 43047

KNOCKYA SOCKS OFF DEALS!



30,000L tank was \$3,899 now **\$3,499**

25,000L tank was \$3,299 now **\$2,949**

13,500L tank was \$2,859 now **\$2,499**

Terms and conditions: Offer valid from 19 September to 30 November 2016. Prices include GST. Not available with any other offer.



Complete Water Solutions



www.tanks.co.nz

24 Huffam Street Motueka Ph: 528 0040
www.cwsnz.co.nz



CARAVAN RENTAL

Local business offering great value, good quality, well equipped UK caravans available for short and long term rental. Can be delivered and set up to a campsite location of your choice. Short term holiday rates from \$50 a day. Long term static hire from \$100 pw.

www.kinacampers.co.nz

Email: info@kinacampers.co.nz



Total Commercial & Residential Pest Control

Get peace of mind by having your property treated by a fully trained Flybustlers technician

Whatever your pest, contact Shane now for a free quote on

5480121 or 0800 83 70 70

NELSON—MOTUEKA—GOLDEN BAY



HEALTH and WELLBEING

MOUTERE MASSAGE

Sports * Deep Tissue * Injury Repair * Bowen Therapy
*Foot Reflexology

* Pregnancy Massage * Remedial Body Work

Fiona Ramsay

Certified Sport/Remedial Massage Therapist

Ph/Txt 027 452 3906

Monday to Friday 10am - 4pm

Evening 6pm-7pm Wednesday & Thursday

Gift Vouchers 20 Wilson Road, Upper Moutere

MAPUA

NATURAL HEALTH CLINIC

BodyTalk / Energy Healing



Jude 021 2020339

www.mapuanaturalhealth.co.nz



Hatha Yoga in the Upper
Moutere. On Mondays &
Wednesdays.

Please ring Jane for more
information. 0272635211

'When we control the
breath, we calm the mind'

LOCAL MIDWIFE CLARE SPRATT

Ring Clare for friendly professional maternity care
and advice.



*I offer full 24 hr maternity care from conception through to
6 weeks post natal, home/hospital and water births,
birthing pool available, natural remedies,
free pregnancy testing, breastfeeding support and much more.*

T: 03 526 7764

M: 0273324929

E: midwifeclarespratt@me.com



*Benefits - Physical Fitness,
Re-energizes the body,
Releases blocked energy and Relaxes
the mind.*

Tuesdays 9.30am - 10.45am

At Riverside Community Centre, 289 Main Road, Lower Moutere

Thursdays 6.30pm - 7.45pm

At Parklands School, Aniwanui Room, 9 Pah St, Motueka.

What to bring - a yoga mat, light blanket and water bottle
Drop-in class \$10. All levels welcome

ENQUIRIES CONTACT JO - 0211709495

DOROTHEA TEBBENHOFF

HEILPRAKTIKERIN
LICENSED ACUPUNCTURIST

25 GREENWOOD ST
MOTUEKA

WWW.TASMANACUPUNCTURE.CO.NZ

03 528 6239

MNZRA, ACC PROVIDER

Acupuncture

Chinese Herbal Medicine



Chi



Sunday Meditation

*Every Sunday morning
10am to 11.30am*

With Geshe Jampa Tharchin

All warmly welcome open to everyone

Kids Dharma Club at 10am Sunday

Bring the children for the morning

Followed by free vegetarian lunch

Chandrakirti Meditation Centre

289 Sunrise Valley Road

Upper Moutere 7173

Ph 5432021

www.chandrakirti.co.nz

PLANT AND PRODUCE STALL

8 Sunrise Valley Road, Upper Moutere

Jams, Jellies, Chutneys made from organic fruit using less sugar.

SMALL JARS \$ 3

MEDIUM JARS \$ 4

Vegetable seedlings \$ 2

Handmade crafts

Plants- Herbs-Flowers \$ 2



"Discover Enhanced Health and Well-Being"

- BIODYNAMIC CRANIOSACRAL THERAPY

- THERAPEUTIC / REMEDIAL MASSAGE

- REFLEXOLOGY - AROMATOUCH

- **GAIN RELIEF OF MANY AILMENTS! **FREE CONSULT!**

CONCESSIONS &
GIFT VOUCHERS

MELISSA POTTER

(I.T.E.C, D.REF, R.M, BCST DIP, P.A.C.T, YOGA DIP)

PH/TXT: 021-1368439

WWW.THEARTOFTOUCH.CO.NZ



Bringing you over 27 years experience!



SELLING YOUR HOME?

UNBEATABLE LOW FEE

capped at **\$10,000^{+GST}**

Debbie Watson 021 462 629 / 03 543 2629

debbie.watson@tallpoppy.co.nz

www.tallpoppy.co.nz





Mapua Natural Health Clinic

Achieving Health and Wellbeing

Sometimes the questions seem complicated.
Know that the answers can be simple.



Basil Essential Oil

Basil has a warm, spicy, yet herbal aroma known to reduce anxious feelings. Basil provides great benefits to both the mind and body due to its high linalool content, making it an ideal application to help reduce feelings of tension when applied to the temples and back of the neck. Basil is commonly used in cooking to add a fresh, herbal flavor to meats, pastas, and entrée dishes, and it is also cooling to the skin. When diffused, Basil may help promote focus and relieve stress.

Uses:

- Diffuse to promote a sense of focus while studying or reading.
- Massage with wintergreen and carrier oil on back of neck for a stress-relieving experience.
- Add to your favourite Italian dishes for a refreshing taste.

Directions for Use

Diffusion: Use three to four drops in the diffuser of your choice.

Topical use: Apply one to two drops to the desired area. Dilute with fractionated Coconut Oil.

Mental / Emotional Balancing:

Negative Emotions-Anxious, weary, overwhelmed, tired, drained, exhausted, addicted.

Positive Emotions-Energised, renewed, rejuvenated, rested, strengthened.

Jude Twin 021 2020339

www.mapuanaturalhealth.co.nz

Lemon Posset

INGREDIENTS

- 300 ml cream
- ¼ cup caster sugar
- juice of 1 lemon
- grated zest of 1 lemon

METHOD

1. Place the cream, caster sugar and lemon zest in a saucepan. Stir over a moderate heat and bring to the boil. Continue to boil for 3 minutes.
2. Remove from the heat and stir in the lemon juice. Strain the mixture through a sieve into a jug, to remove the lemon zest.
3. Pour the lemon cream into individual serving dishes. Cool and refrigerate for 3-4 hours, or overnight until set. Serve garnished with a slice of lemon and a mint leaf.



TIPS

For variation place berries in the base of the serving dishes before pouring over the lemon cream.

Garnish with berries and a mint leaf.

Serves 2.

Resources -

www.doTerra.com

Emotions & Essential Oils. A Modern Resource for Healing.

www.bite.co.nz

TRADE/PROFESSIONAL & SERVICES LIST

Accountants	Accountancy A20 Limited	03 543 2933
Acupuncture	Dorothea Tebbenhoff	03 528 6239
Architectural Designer	Leigh Briars	Mob: 021 215 0946 AH: 03 543 2667
Architectural Designer	Simone Wenk	Mob: 021 1049 039 AH: 03 540 3282
Builder	Tim, Edwards Country Buildings	Mob: 021 320 306
Builder	Andrew Eggers	Mob: 027 446 0739 AH: 03 543 2757
Builder	Jason Frater	Mob: 021 743 497 AH: 03 528 0337
Builder	Steve	Mob: 021 0839 1206
Carpet cleaning	Keith Best	Mob: 021 120 5381
Cartage & Contractors	Wayne, Heines	Mob: 027 430 2725 AH: 03 543 2788
Cleaner	Janine Bernstone, Maid in Mapua	Mob: 020 4014 3047
Earthmoving contractors	Pat Gelling, Gelling Contracting	Mob: 027 246 0953
Fencing	Andrew Prouting, Chops Fencing	Mob: 027 305 2412 AH: 03 543 3613
Caravans	Kina Campers	www.kinacampers.co.nz
Electrician	Tony, Sun Electrical	Mob: 027 378 4580 AH: 03 540 2367
Fencing	Russell Lawrence	Mob: 027 543 2016
Funeral Directors	Simplicity Funerals	03 539 0066
Gardening	Pete Hughes, Endurance Spraying	Mob: 021 194 2654 AH: 03 544 2654
Gardening	Abel Tasman Tree Solutions	Mob: 022 3276 164
Gift shop	Cathie, Kete	Mob: 021 732 752 03 540 2561
Hairdresser	Country Cuts	Mob: 027 472 8863 AH: 03 543 2297
Health & Wellbeing	Melissa Potter, The Art of Touch	Mob: 021 136 8439
Heath & Wellbeing	Jude, Mapua Natural Health Clinic	Mob: 021 202 0339
Horse care	Kenmore Farm	Mob: 027 405 4982
Horse gear repairs	Lawrie	Mob: 021 208 2912 AH: 03 543 2234
Horse therapy	Tasman Equine Therapies	Mob: 027 452 3906
Landscaping	Michael Hardy, Hardy Landscapes	Mob: 021 443 908 AH: 03 543 2555
Landscaping	Sam Leith Landscapes	Mob: 027 355 9316
Lawyers	Pitt & Moore	03 543 9090
Local market	Mapua Country Store	03 540 2581
Massage	Fiona Ramsay	Mob: 027 452 3906
Mechanic	Karl, Autofix	Mob: 020 4113 8667
Mechanic	Mapua Auto Centre	03 540 2180
Mechanic	Moutere Motors	03 543 2707
MP	Damien O'Connor, Labour Party	0800 DAMIEN
MP	Maureen Pugh, National Party	0800 MAUREEN
Midwife	Clare Spratt	Mob: 027 332 4929 AH: 03 526 7764
Pest Control	Flybusters Antians	0800 837070 AH: 03 548 0121
Plumber	Alex Bint, My Personal Plumber	Mob: 027 542 4329 AH: 0800 444 343
Pub/Restaurant	The Moutere Inn	
Quantity Surveyor	Graeme Smith	Mob: 021 1044 4097 AH: 03 526 6772
Real Estate	Sian Potts, Harcourts Real Estate	Mob: 027 296 8345
Real Estate	Wendy Perry, Harcourts Real Estate	Mob: 027 249 1701
Real Estate	Sharon deJong, Summit Real Estate	Mob: 027 3202 196
Real Estate	Debbie Watson, Tall Poppy	Mob: 021 462 629 AH: 03 543 2629
Recreation Centre	Moutere Hills Community Centre	03 543 2516
Play Group	Anna / Josi	021 262 6675 / 027 374 8223
Shearing	Sue	021 533 350
Social Club	Brian or Lois Eggers	03 543 2871
Tennis Club	Vanessa Mairs	claybrookeestate@xtra.co.nz
Tree care	Abel Tasman Tree Solutions	022 3276 164
Trekking	High Places	03 540 3208
Vet	Town & Country Vet	03 544 1200
Water tanks	CWS Complete Water Solutions	03 528 0040
Yoga	Jane, Hatha Yoga	Mob: 027 263 5211
Yoga	Jo, Vinyassa	Mob: 021 1709 495

CARPET AND UPHOLSTERY CLEANING



Keep your carpets
looking new

Keith Best
Ph: 021-120-5381



**SAM LEITH
LANDSCAPES**
DESIGN BUILD MAINTAIN

Landscape Design, Build and Maintain

Digger Work

3 tonne Excavator with Tipper Truck

Storage

20 foot containers - \$25/week

40 foot containers - \$45/week

Nursery

Griselinias, Maples, Kowhai, Oaks,
Magnolias, Hebes, Native Grasses
and many more available.

0.5 - 2m, very reasonable prices!

Sam Leith 027 355 9316
sam.leith@gmail.com www.samleithlandscapes.co.nz



HIGH PLACES

www.highplaces.co.nz
trekking worldwide



Torres del Paine, Patagonia

**Patagonia - Chile Volcanoes - Peru
Nepal - Bhutan - Indian Himalaya
Kilimanjaro - Iceland - Greenland**

Tel 03 540 3208 treks@highplaces.co.nz

NEED YOUR CAR EVERYDAY?

*** BOOKINGS
RECOMMENDED**

WE HAVE COURTESY VEHICLES AVAILABLE*



mouteremotors

Main Road, Upper Moutere

Ph 543 2707